

# GRE Testing Dates Listed First Date October 23rd

Princeton, N.J. --- Educational Testing Service announced today that undergraduates and others preparing to go to graduate school may take the Graduate Record Examinations on any of six different test dates during the current academic year.

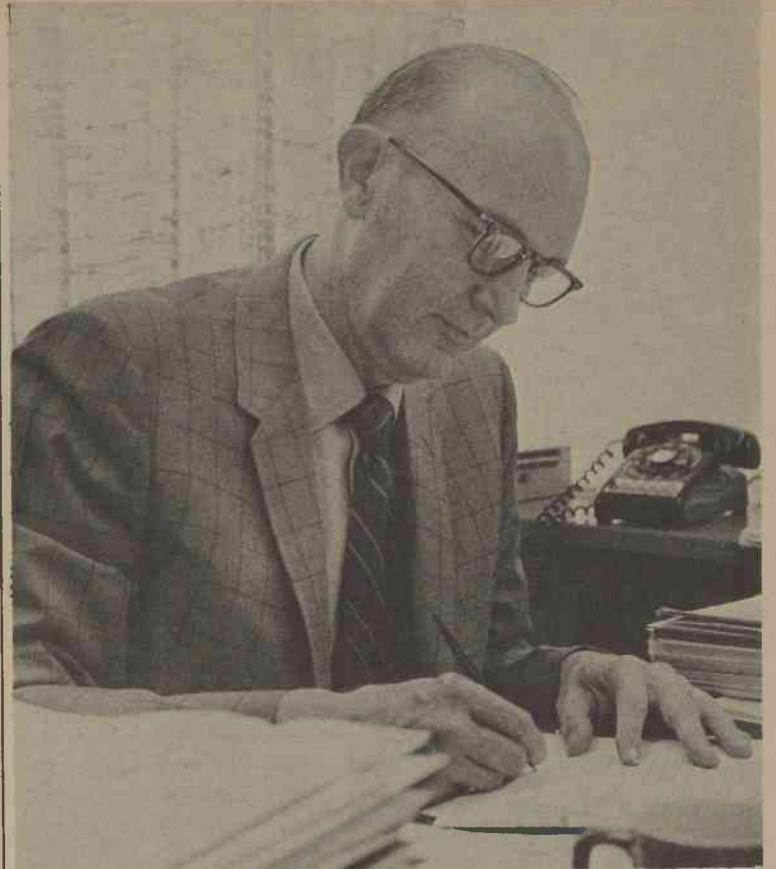
The first testing date for the GRE is October 23, 1971. Scores from this administration will be reported to the graduate schools around December 1. Students planning to register for the October test date are advised that applications received by ETS after October 5 will in-

cur a \$3.50 late registration fee. After October 8, there is no guarantee that applications for the October test date can be processed.

The other five test dates are December 11, 1971, January 15, February 26, April 22, and June 17, 1972. Equivalent late fee and registration deadlines apply to these dates. Choice of test dates should be determined by the requirement of graduate schools or fellowships to which one is applying. Full details and registration forms for the GRE are contained in the 1971-72 GRE "Information Bulletin".

The "Bulletin" also contains forms and instructions for requesting transcript service on GRE scores already on file with ETS. This booklet is available on most campuses or may be ordered from: Educational Testing Service, Box 955, Princeton, New Jersey 08540; Educational Testing Service, 1947 Center Street, Berkeley, California 94704; Educational Testing Service, 960 Grove Street, Evanston, Illinois 60201.

A supply of the GRE "Information Bulletin" is available at the office of Student Personnel Services, St. Andrews no longer requires the GRE, however, the GRE will be given on campus for the December, 1971 and April, 1972 test dates. If anyone has any questions regarding GRE, please see Dean Decker.



DR. DONALD J. HART, president of St. Andrews for the past two years, was chosen Tarheel of the Week by the Raleigh News and Observer.

## Watkins Asks For Dorm Co-operation

BY KEN WATKINS

The most vocal issue since classes first began concerns the problems of open dorms. There is a great gap between the feelings of most students and the feelings of some faculty members over this issue. The faculty has asked the Student Life Committee to review the open-dorm system on a long-range basis. A few faculty members are questioning the value of open dorms.

We feel it necessary to state our sincere hopes that our open-dorm responsibilities will remain in the hands of the students themselves. Students have gone to great lengths to develop a satisfactory system. We hope that this system has time to

prove itself.

Along with the open-dorm privileges come responsibilities. In order to retain the present open-dorm situation, it is the obligation of every student to abide by the rules of this 4 a.m. - 7 a.m. system. The future of this system depends upon the responsible attitude of each student. If we do not prove to be capable of handling these responsibilities, the administration will try to take them away from us. We urge you to act responsibly within the open-dorm system. Without full cooperation, we could lose the present system.

Ken Watkins  
R. Scott Breckenridge

## 'Lib' Meeting

(Continued from Page 2)

factory worker, said she had always felt inferior to women of higher social status. Elizabeth, a young divorced grad student and decidedly middle-class, said that she, too, had always felt inferior to women of upper-middle backgrounds. It appears that there's always someone richer, prettier, thinner, sexier, or more sought-after, no matter who you are.

Now we all know that because of socialized feminine competition, women are divided. Competition instilled by the oppressor is an old trick, and the problem of class differences and prejudices enters in to complicate matters. But one of the bases of female oppression is the male-female sex roles, which cut across all social and economic class lines. The gap produced by class differences seems insignificant when confronted with the enormous common ground of female oppression, an oppression which is unique and felt by all women.

The conference was a success in that it united women who have been kept apart for too long, and brought us a little closer to the hope of smashing the capitalist patriarchal social structure in America.

## Dr. Melton Elected To Head Professors

George E. Melton, associate professor of history, will head the campus unit of the American Association of University Professors at St. Andrews Presbyterian College for the 1971-72 academic year. Dr. Melton succeeds Ronald H. Bayes, writer in residence and associate professor of English, who as past president will serve this year on the executive committee.

Other officers for the cur-

rent year are George L. Fouke, assistant professor of politics, vice president, and Mrs. Margaret Bennett, associate librarian and cataloger, secretary-treasurer. Executive committee members, in addition to Bayes, are William M. Alexander, professor of philosophy and religion; Ronald C. Crossley, assistant professor of religion; and Thomas C. Somerville, assistant professor of church music.

# Rodgers ABC Store

ICE COLD WINE

Champagne, Spanata, Tequila, Mogen David, Beaujolais, Chianti, 4 ft. Chianti, Cold Duck, Saki, Zinfandel, Boone's Farm, Ore Galliano, Ripple, Bali Hai, Christian Brothers, Taylors, Lejon, McColl, S.C., 7 miles, ST. ANDREWS, ENTRANCE, Have a Boone's Farm week-end!

## THE HONEY CONE DRIVE-IN

GETTING TIRED OF THAT OLD CAFETERIA FOOD?

Come in and try our Tummyfull

Burger — 79c

and our specialty,

Golden Fried Onion Rings — 35c

"We take a little longer to serve you better"

## BOB'S JEWEL SHOP

TRADITIONAL **Keepsake** WEDDING RINGS

ALL YOUR JEWELRY

NEEDS JUST A

FEW MINUTES

AWAY

College Plaza