

THE LANCE

Official Publication of the Student Body of St. Andrews Presbyterian College

Volume 13, Number 2

ST. ANDREWS PRESBYTERIAN COLLEGE, LAURINBURG, N.C.

THURSDAY, SEPT. 20, 1973

Lance Poll

Because the recent rule changes are widely discussed, The Lance decided to conduct a pole on specifically the new rule changes concerning the hour changes in the dorms. The pole was conducted by telephone to every suite on campus. In order to draw as wide and divergent opinions as possible. The major

ity of students polled were very responsive to questions asked with only four out of fifty-five refusing to answer the questions.

The questions asked were:
1) Will the new rule changes successfully prevent co-habitation?

2) Do you feel inhibited by the new rule changes concern-

ing closing of dorms from three to nine instead of four to seven?

3) Do you feel the new restrictions will improve the image of St. Andrew's to perspective students to the outside world?

All people polled were asked to respond with either "yes, no," or "no comment."

Poll Results:

	Male			Female		
	Yes	No	No Comment	Yes	No	No Comment
Ques. 1	0	20	6	2	20	3
Ques. 2	6	18	1	5	21	1
Ques. 3	10	15	0	11	19	6
	Male and Female			Total:		
				Yes	No	No Comment
Ques. 1				2	40	9
Ques. 2				11	49	2
Ques. 3				21	34	6

It is interesting to note that on the question of the hour changes in the dorms, the overwhelming opinion of St. Andrew's students was that cohabitation would not be prevented. If cohabitation did go on in the past, it obviously will continue. However, almost half of the people polled

felt some inhibition as a result of the hour restriction. In regard to the improving of St. Andrew's image by more restrictive dorm hours almost half feel that St. Andrew's will receive a better image. Men and women's sensibilities regarding the issue of co-

habitation and the restriction thereof by more stringent hours are almost identical. In response to the first question there was an equal split with 20 "no's" for the men and 20 "no's" for the women. And in response to the other two questions there was only a slight difference.

Arbus: Photography of Reality

The exhibit of the photographs of Diane Arbus, which is being shown in the Vardell Building, is well worth going to see. If you haven't had a chance to go over, there is still time. Her pictures will be showing until Sept. 28th.

Diane Arbus was a very unusual artist. She concentrated on an area that most artists try to overlook, which is the area of "the flaw" in human beings. There is nothing pretty about her pictures. Most of them show the human body as being ugly. This is in direct contrast to Freshman C&C where the professors take great pains to show us the beauty of the human body with examples of Greek sculpture.

She feels that "...there are things which nobody would see unless I photographed them." I think that what she shows, most people would prefer to hide.

As I was looking at her pictures, I overheard one student say "I'm not sure what kind of reaction I'm supposed to get." Another student's remark was that she felt worse and liked the pictures less every time she saw them. A lot of people are disgusted by what they see. She wants us to realize that human perfection is not always a reality. I'm sure most people would not want to look like the subjects of her photos. People tend to have themselves re-

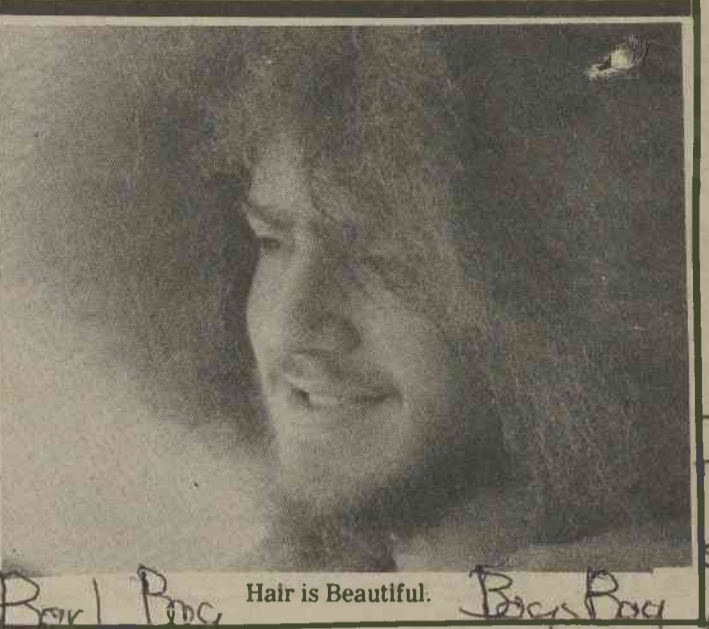
touched in their own minds. Her pictures cover a wide variety of subjects. These include old people, young couples, nudes, female impersonators, show girls, little kids, and many others. Each one must be seen to be appreciated.

She certainly makes a statement about the way people see themselves, and the way they are in reality. After seeing them one might wonder whose view of humanity is distorted. Hopefully, we don't appear to each other like her subjects... or do we? They are all real people. It really gives us something to think about.

BY COLLEEN REAGAN

uinely concerned about consumer and environmental problems but do not have the expertise and time to effectively fight their causes. Therefore, PIRG supports a group of paid professionals--scientists, co-ordinators, economists, lawyers and lobbyists who fight for change on consumer levels.

At St. Andrews we conducted-- a study of dangerous toys at Christmas to remove hazardous toys from the store shelves in Laurinburg; a grocery price survey to determine which supermarket in the area was the best overall place to shop; a flammable fabric study to determine if department stores in Laurinburg



Charlotte Candidate for Mayor Speaks

On Tuesday, the 11th of September, Charlotte mayoral candidate, Jim Rumley visited the St. Andrews campus, giving an initial talk about his policies at the Student Union which was followed by an informal discussion in the lounge of Suite 5 in Mecklenburg. Rumley, a socialist candidate, running for the U.S. Labor Party, a political arm of the National Caucus of Labor Committee (NCLC), stood on a five point platform; calling for: the creation of decent productive jobs for all; \$150 a week minimum wage with an escalator; the building of school, housing hospitals; the financing of all of this through the taxing of banks and businesses; the unrestricted right to organize and strike.

The intent of the NCLC is "to raise the level of political thought" in America by confronting standard political and economic ideas. Their effort is to create an alternative form of government to the capitalist one we have now, which would be a working class government. They see an economic depression, much like the Great Depression of the 1930's, inevitably coming upon us and call for immediate organization to fight back. This campaign "is part of a national movement to unite the working class to get the things we need for a decent life."

Observation and discussion hint that Mr. Rumley's reception on campus was hardly enthusiastic. One listener, when

questioned, replied that he "didn't get a good picture of exactly what he stood for." Furthermore, there were definitely some fallacies in his argument. When pressed to define his terms, he did so vaguely and sometimes evaded the issue entirely. Another listener was "impressed that he (Rumley) had taught himself so much," but "felt ostracized from his particular movement because of his definition of creativity and his psychological terms and, their relation to society, which were vague." This same person felt that Rumley's ideas "didn't seem to be pure socialism" and that his presentation would have been greatly enhanced if he had had some mastery of the English language.

The reaction of a large majority of his listeners seems to have followed the same lines. Statements such as, "the Beatles were not creative," are not likely to attract the support of an age group which has been so heavily influenced by the creativity of that very group. Vague, undefinable terms such as "sensual realism" were tossed around seemingly impressing no one and labels such as "fascist" were put on all who did not rally to the support of the NCLC.

Whether or not the political line of the NCLC is worthwhile and constructive is, of course, open to debate, just as in all politics. But the method of presentation was not one suitable for winning the support of a college campus.

There was a fire Sunday afternoon in Albemarle dorm. It was caused by too much voltage entering the compressors of the air conditioning system, which caused the compressors to ignite. The fire lasted approximately five minutes and no damage was done to the dorm, except for the air conditioning system itself.

were complying with FDA regulations in having flame retardant material in children's sleepwear; a gasoline price survey to determine the least expensive place to buy gasoline; and a prescription drug survey which showed among other things a 500% difference in price of the same drug in

two drug stores. We have high hopes of accomplishing much more this coming year.

If a student does not want to support the activities of PIRG, he/she can ask for a refund during a designated time period very shortly after the beginning of the school term.

N. C. PIRG

The Public Interest Research Group (PIRG) is a national organization operated by students and composed of a combination of students and professionals who fight in consumer problems.

PIRG is based on the premise that students are gen-