

Sports

Under New Management

David Benzaquen
Staff Writer

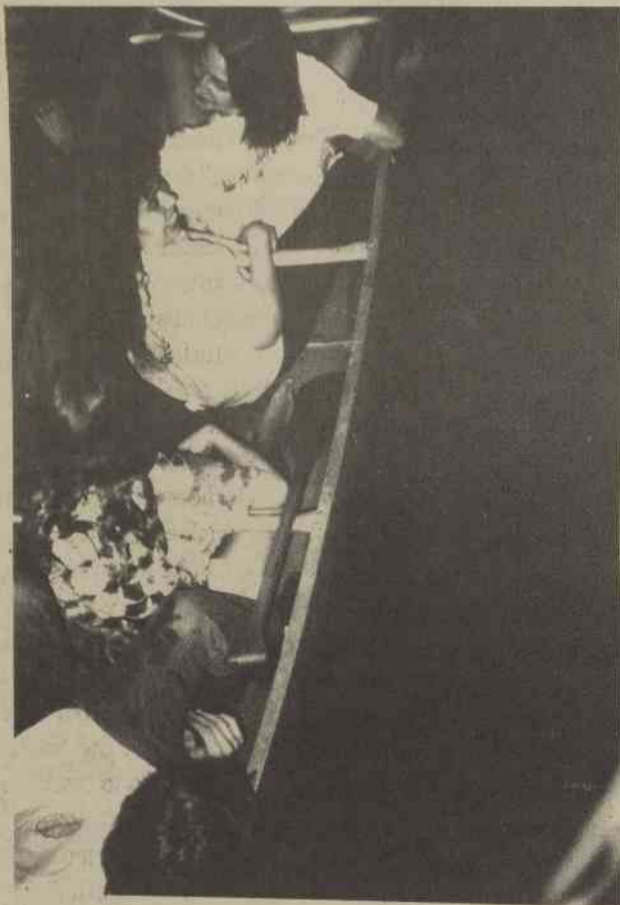
Success of the women's soccer team and a recent promotion signal changes for the athletic program here at St. Andrews. Lorenzo Canalis, new athletic director, took his women's soccer team to second in the N.A.I.A. south region tournament last year and captured the N.S.C.A. award as All-South Coach of the year. He became athletic director in July, after three years as the women's soccer coach.

New faculty members Ali K. Alwan, tennis and assistant soccer, Stuart Carmichael, assistant baseball, Clifton C. Dillard, assistant basketball and track, Benjamin

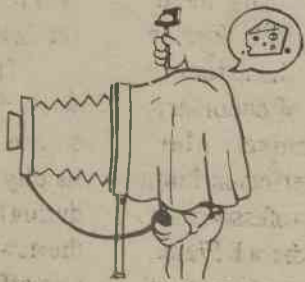
C. Guiliano, softball and volleyball and William L. Rude, assistant softball and volleyball begin to coach this year. Canalis said "I'm working with a good group. Everyone has a great deal of respect for each other, like a team."

Future goals for the athletic department are facility upgrading, naming Student Athlete of the Week and bringing the outside community closer to the campus, Canalis said. "What makes our athletic department so strong is that it's not separate from the school; it's a reflection of the school," the director said. "There is not a winning-only attitude, but more of a team aspect."

Canalis puts a lot of emphasis on keeping the school and athletics together. Canalis believes that S.A. has many opportunities to offer, and he encourages athletes to take advantage of them.



She's still behind us, paddle faster!



Women's Rugby: A Rude Awakening?

Janet Francher
Sports Editor

Picture, if you will, a newly formed women's rugby team that hails from the scenic and oh so metropolitan St. Andrews College....

Now, imagine our heroines as they travel to Duke University for their first game. Not all of them arrive at Duke at the same time due to the fact that several of our talented and lovely players are riding in a green 1976 VW bus and are left in the dust by the rest of the caravan. Nevertheless, as the Rhinos arrive expressions of wonder and amazement grace their sunlit faces. They roam around the massive Duke campus in a relatively clueless fashion for quite some time, searching for the rugby field, a bathroom, the men's dorms and other points of interest. When our heroines do find the field, the expressions of wonder on their faces change to expressions of confusion and terror.

Ruth Hayball- "Well, there's the rugby field."

Janet Fancher- "Yeah, but that's the men's team."

Heather Signor- "Nope, those are women."

Jennifer Inman- "Those are women?"

Sarah Daniel- "Where are the bathrooms?"

Abbey Dondanville- "Behind the football stadium. Those are women?"

Becky Loffert- "Yeah, that's the Eno River women's rugby team."

Janet, Ruth and Abbey- "Run away!"

Ah yes, ladies and gentlemen, the Rhinos had stumbled across Eno River, who at the time was wiping up the field

with the Old Dominion women's rugby team (fellow novices). So, with some trepidation, our heroines sit down to watch the rest of the game. Suddenly, the looks of terror begin to disappear from the Rhinos faces.

As they watch the game there is a general consensus amongst the St. Andrew's women. They are not expecting to win their first game, especially against such a seasoned club as Eno River, but they are noticing one thing that might serve as a lethal weapon and a saving grace. The St. Andrews women seem to be faster.

Smiles appear on their faces....

Some hours later the Rhinos take the field. The coach of the Eno River team consents to play with them, as they, with one player injured and two out of town, do not have enough people to constitute a full team. The ref goes over a few of the finer things with them, and then the Rhinos first "friendly" game begins....

The first noticeable difference is the size of the two scums. The average size of the SA scum is 5'5", 135 lbs. The average size of Eno River, 5'7", 160 lbs. The second noticeable difference is the speed of the two teams. The Rhinos scum is close in speed to the Eno River line. Thus, theoretically, we have a battle between power and fleet feet.

Alas, in this particular duel, experience and strength triumph over ambition and speed. In the course of the game, which ended with a very



respectable score of Eno River -- 7, St. Andrews -- 0, there was only one great scare for the Rhinos which came in the first half when Andria Brodhun was tackled and broke her collar bone (Never fear, avid readers, Andria was rushed to the hospital, treated, and made it to the rugby party, but that's another story...). Despite their loss, our heroines were complemented by both Eno River and the referee on their ability which seemed to far exceed that of most new teams. Some of the game's most exciting plays were made by the Rhinos, including two great returns made by Adrienne Atkins. (One of the most amusing plays was also provided by the Rhinos. It occurred in the second half when two of the smallest people on the field, Rachel Roundtree and Janet Fancher, ganged up on the largest Eno River player - 5'11", 175 lbs. - and in a brave effort brought her down in a tangle of wild limbs just outside of the try zone.)

Low and behold, the final whistle sounds and the Rhinos first game ends. There are a few cuts and bruises (and a broken collar bone), but all in all the day is deemed a success. The St. Andrews women's rugby team has been initiated into the game, for the party, where they receive a different kind of initiation, but as I said before, that's a different story....

The Rhinos are in the process of lining up a home game for Ganza. Stay tuned for details!

More Sports on page 11