

Welcome to the Home of the Marching Vikings



A lot of emphasis is put upon music at Elizabeth City State University and the Elizabeth City State University Marching Band is by far the most popular band in eastern North Carolina. Internationally and Nationally recognized in scope, the band has performed half time shows at many professional football games, among these are the Philadelphia Eagles, The Baltimore Colts, and the Washington Redskins. The Band also performed at the Garden State Raceway in Cherryhill, New Jersey. These performances have sometimes taken place on an annual basis. It is also important to note that much of the expenses for these trips included cash made by the members of the Marching Band.

Widely recognized on the eastern Coast, the Marching Vikings band is a familiar sight to many viewers both in person and on televised screens.

Last year the band boasted at a membership of over 135 members at that time the band was under the dynamic leadership of Mr. David (Boss) Williams. During the Williams administration the marching band broke the record in forms of out-of-state travel and nationally televised performances. Also during the Williams administration the band received performance invitations

from as far west as California.

The image that has been built by the hard-working Marching Band is one that is favored by the Elizabeth City community and all of the ECSU family. The early rising and late-working band is one that has been produced through hard work and developed skills. The students at the University feel that no other band can touch the quality, quantity and performance ability of their band.

The new director of the Marching Band, Mr. Floyd Robinson, of Virginia State College, is starting the year out right with early morning and afternoon practice sessions.

As a student of the University and knowing exactly what the ECSU Marching Band can do, I would like to urge the previous members of the band to work with the new director and make our band another success. WE must remember that Mr. Robinson can do nothing without student support. As an open appeal please help to keep our band what it has been in the past years and more, I know that there will only be one "Boss" Williams but please work with the director and George Richardson, President of the Marching Band for a better year.

Peace!

—REW



The Marching Band Performs

Greek Life at ECSU

The freshman and transfer student is no doubt fascinated by the colors, greek symbols and apparel symbolizing greek life on campus. Greek Life is an essential part of the overall life at the University. Nearly 50% of the student body participate in rush activities and nearly 45% of the entire student body is greek. To many students fraternal and sororital life and activities is the key to adjustment and tend to satisfy the urging of the "sense of belonging."

With the wide range of fraternities and sororities on campus the new student is not short-changed of an appropriate choice. The fact why most out-of-state students (mostly northern) are Kappas remains to be that the further north you travel the more popular Kappas are, the same applies to Alphas (mostly southern). At any rate, Greek life at ECSU is indeed vital for social development at this university. Because this is a socially unadjusted area for blacks, greek life is able to fulfill that social gap.

There are four sororital organizations on campus Alpha Kappa Alpha (pink and green), Delta Sigma Theta (red and white), Zeta Phi Beta (blue and white), and Sigma Gamma Rho (blue and gold). There are six fraternities on campus Alpha Phi Alpha (black and gold), Phi Beta Sigma (blue and white), Iota Phi Theta (brown and gold), Omega Psi Phi (purple and gold), Kappa Alpha Psi (crimson and cream) and Alpha Phi Omega (blue and gold).

Alpha Phi Omega is the newest addition to the greek world at ECSU. The Chi Lambda chapter was established on the campus in March 1971. It is the only integrated fraternity on campus. Chi Lambda chapter dominates the greek life at ECSU in geographical area cover-

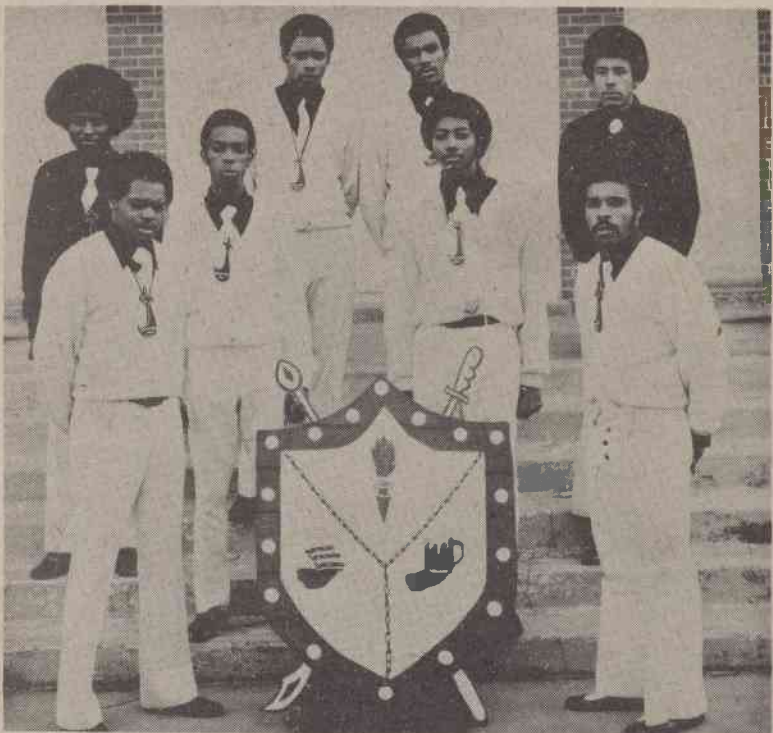
ing the area from far north as New York City and as far south as Daytona Beach, Florida. The fraternity made its debut with a dynamic block show in Williams Hall just prior to Easter vacation. It is the largest greek-letter organization in the world with a membership of over 500,000 with more than 650 chapters.

Omega Psi Phi dominates the campus in undergraduate membership along with its sister group, Delta Sigma Theta. Omega Psi Phi is popular on the campus for its "boss" colors, purple and gold. Phi Beta Sigma and Zeta Phi Beta are the only sister and brother greek-letter organization on campus with identical colors. The AKA's have established the reputation of having the loveliest and smartest colors on campus and favored by many ECSU women for their "bad" songs. The colors are blush pink and Nile green. The Iotas have the most conserved colors on campus - gold and brown. Kappa Alpha Psi, the most controversial group on campus and known for its well-dressed men have done it all. The Kappas and their sister group. Sigma Gamma Rho leads the campus in color contrast. The Kappas Crimson and Cream and the Sigmas Gold and Blue is indeed a very cool combination.

But aside from greek symbols and sweaters, songs and steps, the greeks of ECSU strives for more important goals. Among these is unity among greeks as well as non-greeks, academic scholarship, new and dynamic innovations among the student body social and intellectual change and wholesome social living.

So as you become a part of the University family and as you search for a better social and academic life, I take great pride in telling you to "GO GREEK".

—REW



Groove Phi Groove Swanxman