

ECSU BAND



E.C.S.U. Concert Band

IMA Meeting

Sixteen students, Mrs. E. A. Johnson, Choir Director; and Mr. Charlie Vaughan arrived at Livingstone College on February 15 for a weekend of business and little pleasure - the IMA meeting.

IMA is the Intercollegiate Music Association and Elizabeth City State University was very well represented with the participation of the sixteen students from the choir and band.

The students were involved in seminars and strenuous rehearsals Friday through Sunday, discussing IMA business and preparing for the IMA concert to be given by both, the IMA Choir and Band.

The IMA Choir and Band are made up of students from all colleges and universities belonging to the association. The rehearsals were not in vain, for the students had never practiced, nor performed together before. Above all things, they had guest conductors.

The concert was given Sunday afternoon, February 17, first by the IMA Choir and then the IMA Band. Guest conductor for the choir was Dr. Carl Harris of Virginia State College and for the band, Dr. T. Marshall Jones of Albany State College in Georgia. The concert was a fine performance and all of ECSU students received awards.

Among their pleasures, the students met the President of IMA, Dr. Chelsea Tipton of Hamton Institute, and attended a banquet where they witnessed a presentation given to Mrs. Johnson for being a charter member.

The participating students were: for the band; Bonnie Saunders, Calvance Brock, Wallace Spellman, Paula Bakcus, Dwain Hewitt, Joselyn Wiggs and Lee Johnson, for the choir; Tommie Fowler, Faye Simmons, Brenda Downing, Janet Palmer, Bulter Lewis, Augustus Sutton, Michael Robinson and Anthony Eason. ECSU's delegate-at-lodge was James Price.

The Concert Band

The Elizabeth City State University Concert Band, consisting of 52 brass wind, and percussion instrumentalist, is now in preparation for their annual concert season.

The concert band, under the direction of Mr. Floyd L. Robinson, is planning to go on tour from April 1, to April 6. While on tour, the Band will visit various high schools, colleges and other places of interest. The band hopes to gain the interest of individuals in joining the E.C.S.U.'s fine Concert and Marching Bands through this tour.

E.C.S.U. can be proud of its Concert Band, consisting of some of the finest musically talented instrumentalists from all over the east coast. The band plays outstanding and

exciting concert music.

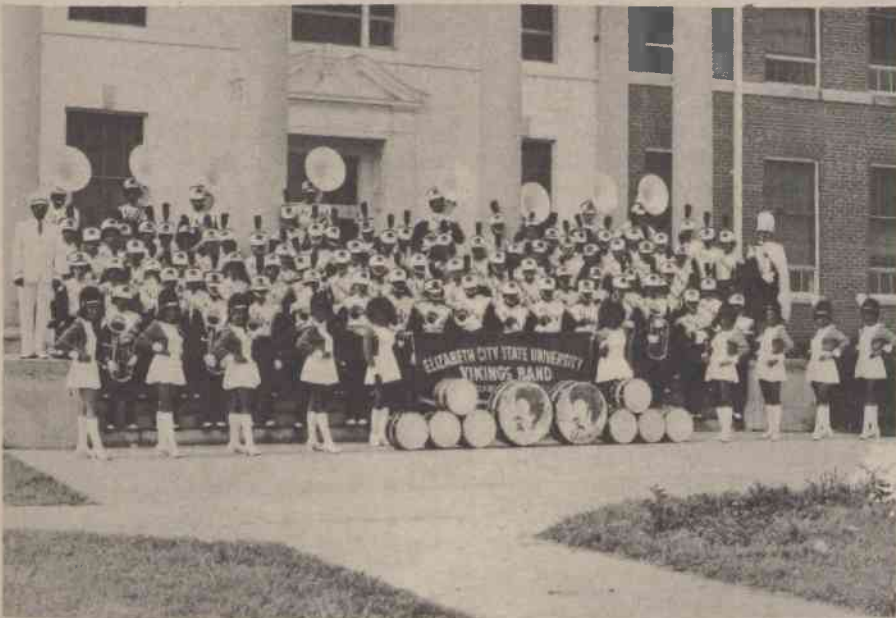
Some of the principle positions in the band are held by members of all four classes, ranging from seniors to freshmen. First chair holders are: Bonnie Saunders - Junior - Flute; Jewel Johnson - Sophomore - Clarinet; Wallace Spellman - Senior - Alto Saxophone; Paula Bakcus - Junior - 1st Cornet; Larry White - Junior - French Horn; Dwain Hewitt - Freshman - 1st Trombone; Teresa Conroy - Freshman - Tuba; Joselyn Wiggs - Junior - Principle Percussionist.

With your support, the E.C.S.U. Concert Band is looking forward to a very prosperous season.

Peggy Scott



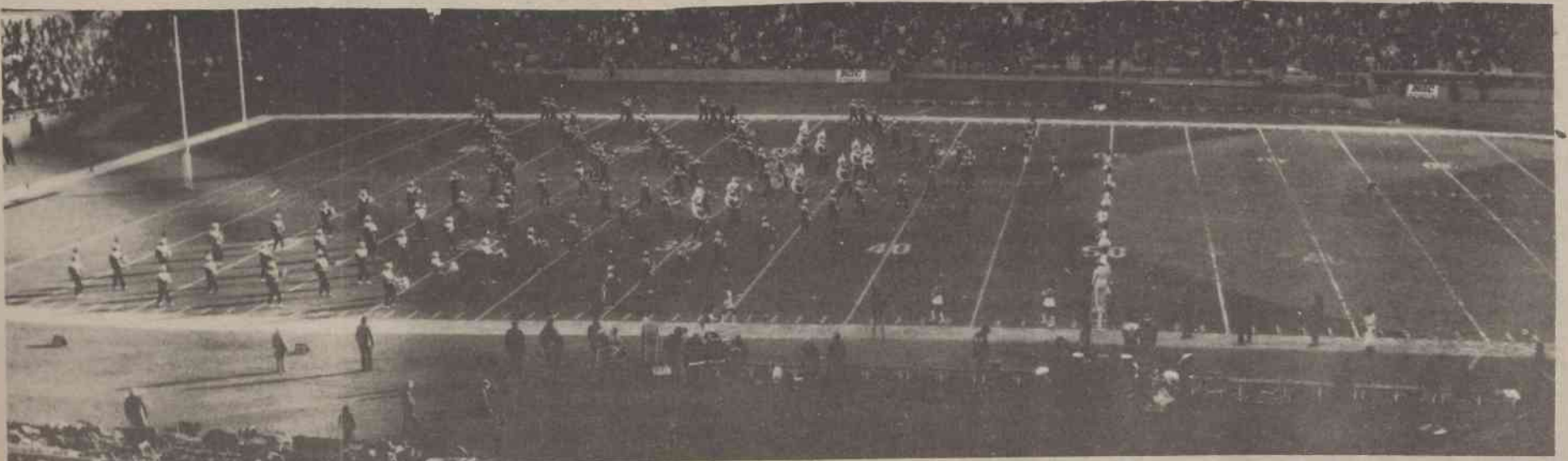
Band Director, Mr. Floyd L. Robinson



The Marching Vikings



Pictured Above: Diane Sharpe, Head Majorette; Marcus Newsome, Drum Major; Majorettes: Juanita Shannon, Connie Hedgepeth, Jocelyn Eley, Gail Parker, Gwendolyn Sanders, Brenda Linyear, and Tommie Ragsdale.



Marching Vikings At New York Shea Stadium