

HIGHLIGHTS 0



MISS ECSU, ALMA JENKINS, waves to the many spectators who lined the street to view another CSU great parade.

Homecoming Parade

If you love parades, you should have seen the Elizabeth City State University Homecoming Parade when it journeyed from the campus to Memorial Field. While thousands of local and area spectators and alumni were lining the parade route for the biggest parade ever, approximately 30 units were leaving the ECSU campus, on October

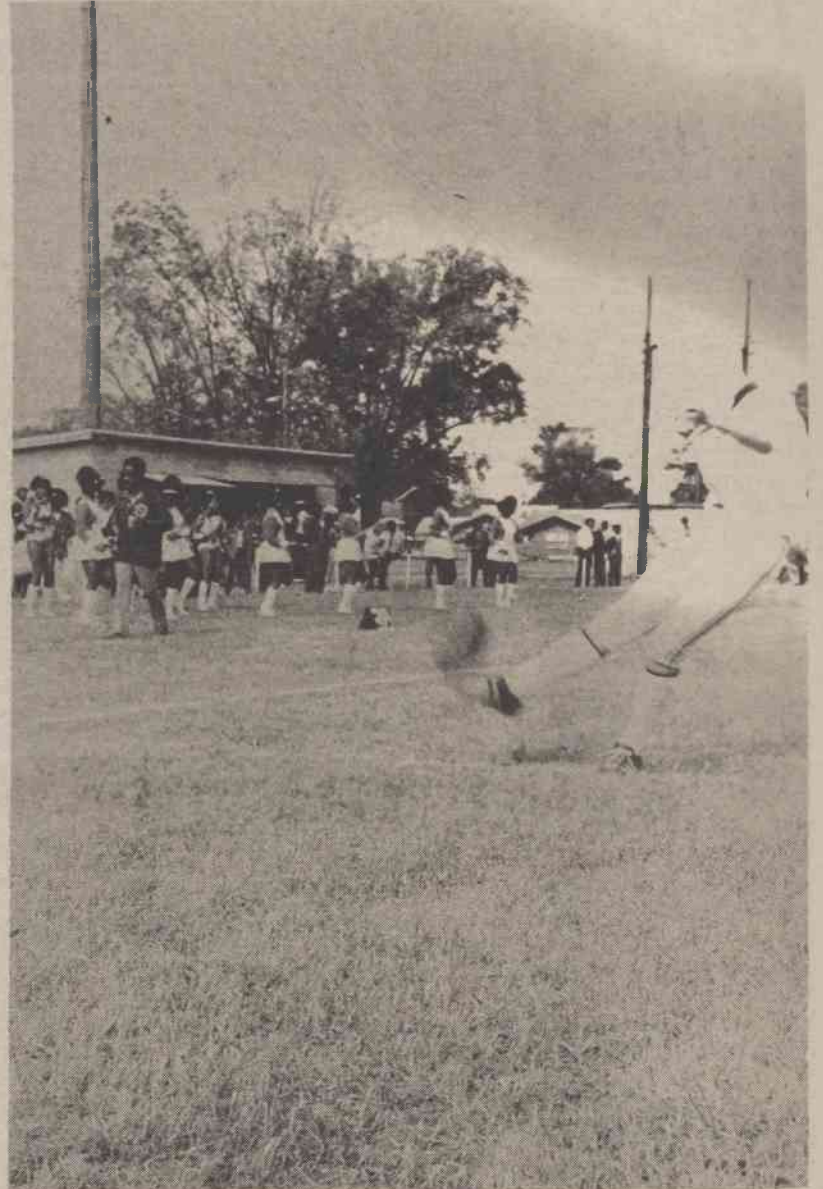
26. From Hoffer Street the Homecoming Parade moved to Southern Avenue, marched up Southern Avenue to B Street. Turning left at B Street, it proceeded to Herrington Road. The parade then moved north up Herrington Road and McMorrine Street to Main Street and the heart of [continued above]

downtown Elizabeth City. Passing the Courthouse lawn reviewing stand, it proceeded west down Main Street to Road Street. Turning right at Road Street, the ECSU Homecoming Parade marched north along Road Street to Elizabeth Street and Memorial Field for the pre-game show, at 1:30 p.m.

Bands from Portsmouth's Craddock and Manor High School, Murfreesboro, South Mill, Va., and Knapp High School's Drum and Majorette Corp joined the crack and

popular 125-piece ECSU Marching Vikings band.

Joining the marching and musical units were around thirteen beautifully decorated floats that were filled with attractive co-eds and their escorts. Local and out-of-town marching units and cars were a part of the ECSU Homecoming Parade. In addition, the public got a chance to see "Viking II," a 25-foot blue and white boat, one of the two crafts which ECSU uses to conduct geological research.



LEZZI Practice his kick before the game starts.



THE CHOIR AND OTHER ORGANIZATIONS were represented in the parade.

Miss MGA

The Men Government Association is proud to announce Miss MGA for the 1974-75 school year. The person being elected as Miss MGA has to meet the following criteria: the person has to be a sophomore, have a cumulative quality point average of 2.3, and have participated in at least one or more extra-curricular activities. After meeting these criteria and others, she must be voted upon by the males of the student body.

Second runner-up for Miss MGA is Miss Beatrice Burke, a Junior Intermediate Education Major. First Runner-up is Miss Regina Covington, a Sophomore music major. Miss MGA is the beautiful Miss Linda Pittman, a Junior Business Administration Major.

The men of Elizabeth City State University wish these beautiful young ladies success in everything they endeavor.