

Library Has New Security System

By PATRICIA BLUNT

The CheckPoint System is now operating in Elizabeth City State University's G. R. Little Library. Its purpose is to remind forgetful people to properly check-out library materials. According to a library spokesman, such an electronic detection system is designed to: Protect the collection against unauthorized removals; Enable the circulation system to work more efficiently; and Provide better library service for all users.

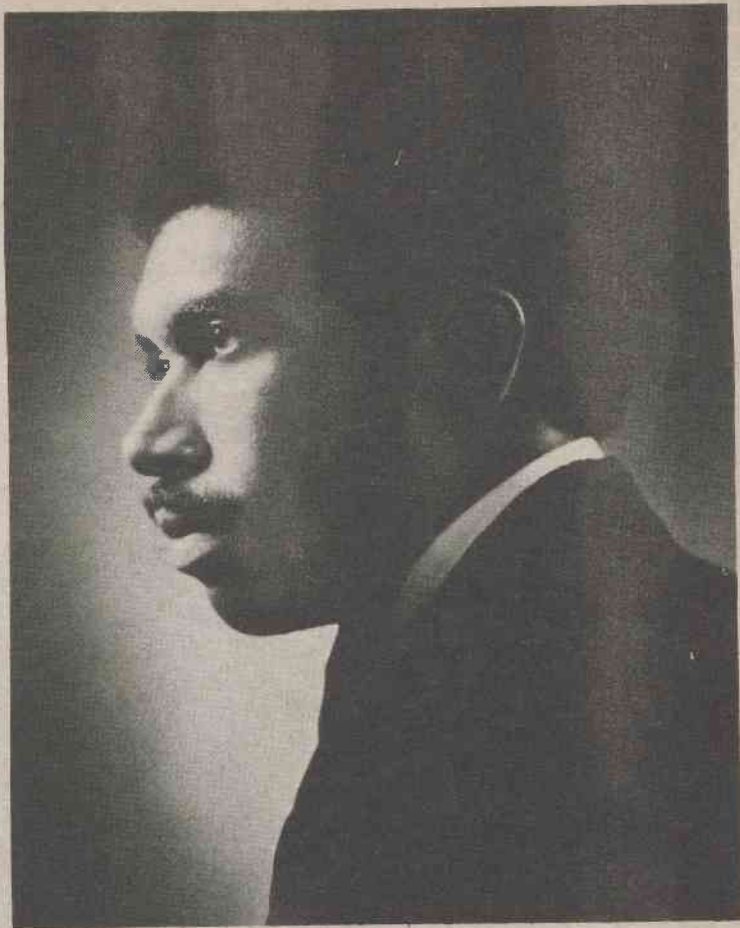
For the system to work, students must enter and leave the library through the prescribed entrance and exit gates. If a student wishes to borrow materials, he must bring them to the circulation

desk for proper charge-out before exiting the library. With CheckPoint it will not be necessary to inspect brief cases, parcels, etc. unless they activate the system. A library spokesman said that if the alarm should sound, the student should return to the circulation desk so someone on the library staff can charge out the materials for him.

CheckPoint was not designed to catch would-be pilferers, library official said, but to monitor "preconditioned" library materials to insure they are properly checked-out. The library representative also said that the system electronically detects library materials through brief cases, parcels and clothing, yet it is completely safe and harmless. He explained that it operates

on regular house current (110V) and requires less power than is needed to light a 25 watt bulb. The system, he said will not affect film, cassette or computer tapes, or any other personal object. Walking through Checkpoint, he assured the students, is as safe as standing next to your home radio.

"Through cooperation with the borrowing procedures, a library representative said, all of us can help eliminate the inconvenience and frustration of not being able to find particular volumes when they are needed. By deterring unrecorded as well as unauthorized removal of library volumes, CheckPoint should help to minimize financial loss and maximize service for the entire community of users."



Leon Bates, Concert Pianist, at ECSU Performance

Speech/Hearing Center Provides Campus Service

By TREQUITA HOOPER

enrollment of approximately 50 students.

The Elizabeth City State University Speech and Hearing center is an outgrowth of the Speech Pathology and Audiology concentration. The center was established in 1972, with the purposes of providing speech pathology and audiology students with background experience in their field of study and the opportunity to work in a professional, clinical atmosphere.

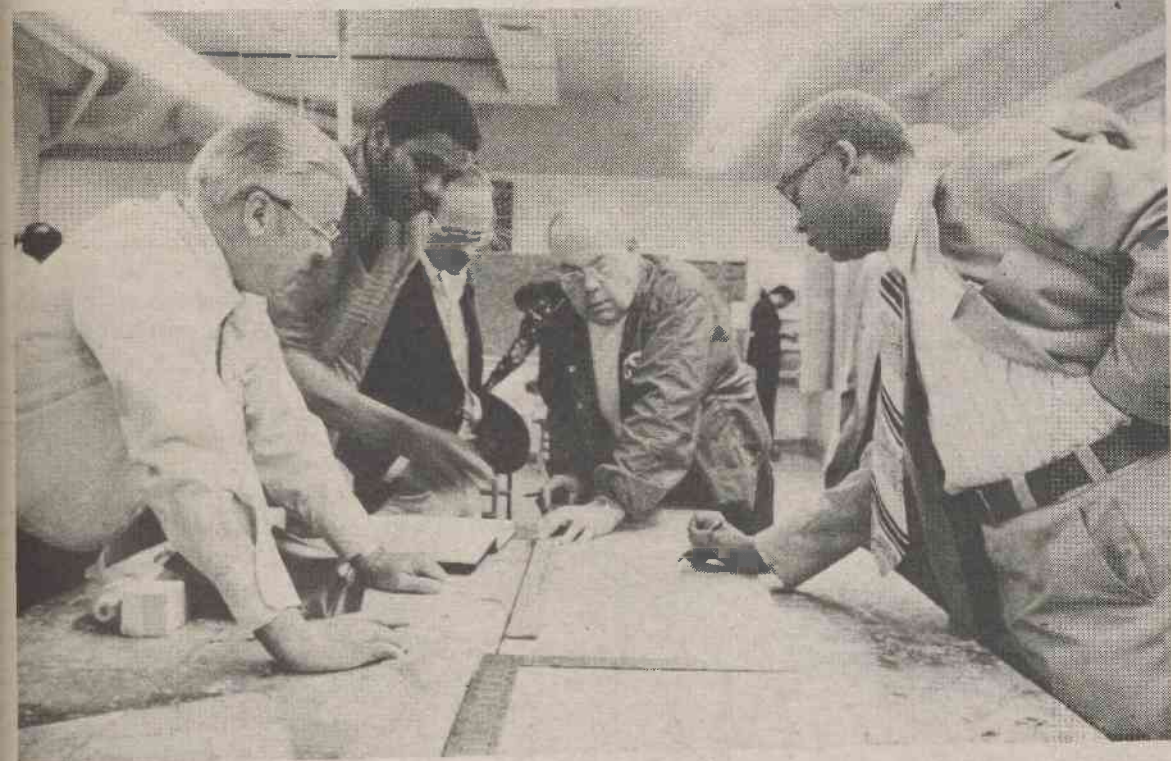
The Speech and Hearing Center was initially under the supervision of Helen Caldwell. Currently Dr. Lois Green, is directing the Speech center and the concentration.

Students who come to the center for therapy are referred or they come in on a self-referral basis. Students are usually referred by a teacher because of their performance in class or they are referred because of their inability to pass the speech performance test administered by the university. Students who come in on a self-referral basis are usually interested in improving their general speaking ability. This semester the center has an

Students enrolled in the Speech Pathology and Audiology concentration, work as therapists and assist in correcting speech problems such as articulation, voice and stuttering disorders. They are also qualified to administer audiometric evaluations, articulation tests and oral peripherals, which are examinations of the oral cavity. The students are also in charge of individual and group therapy, involving a variety of cases.

Individual therapy is designed to deal directly with the problem. Group therapy deals with general speech improvement, concentrating on pronunciation, eye contact, posture, and voice projection. Usually Dr. Green will recommend a student with a more serious problem to individual therapy, but the final decision is up to the student.

As part of clinical praction the students recently participated in a screening test for hearing disorders. The students administered audiological evaluations to all the elementary school age children in Elizabeth City, Pasquotank County.



Industrial Arts Major, Robert Branch, instructs

Ms. McIntosh New In Art Department

By HENRY T. THARPS

Ms. Jenny C. McIntosh, a native of Kingtree, South Carolina, is the newest addition to the ECSU Art Department. Her background includes a B.S. and M.S. degree in art education, from Radford College. Currently she is working toward her Ph.D. at Florida State University.

Previously Ms. McIntosh has taught art for four and a half years. She has taught in high school but has also substituted at Florida State University.

Ms. McIntosh has a special interest in silversmith work in which a person can be very creative. Her hobbies include traveling and boating.



Ms. Jenny McIntosh