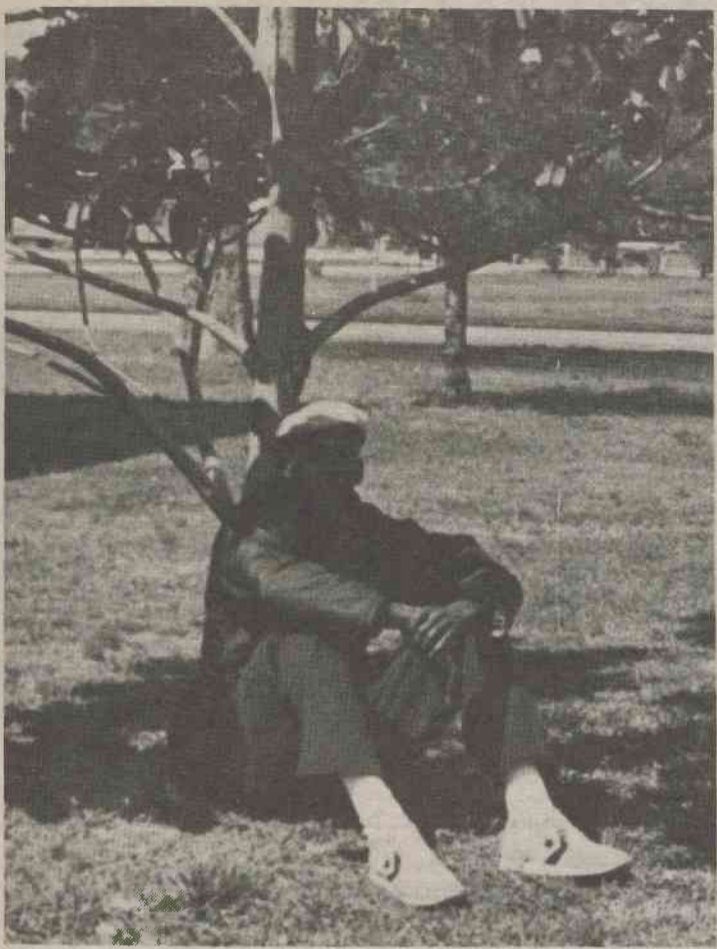


"Sky's" the Limit!!!

— "He's a team player."

Coach Vaughn

by Tammye Jones



If a public announcement would be made, Rudy (Sky) A. Burton would be named Most Valuable Player. "The statistics show it and there is no better choice." These are the words spoken by coach Bobby Vaughn, head basketball coach at Elizabeth City State University.

Rudy Burton is one of the most dependable players on the team and a major factor to the team. "He's not a practice player because he tends to goof off sometime," says Coach Vaughn, "But he is a team player." Whenever the other team players get the ball to him, he either scores or gets the opponents to foul him. As a person, Rudy never talks much or complains. He attempts to do what he is told.

Rudy Burton led the nation this year in field goals in the Second Division. These statistics are shown in the February 16 edition of the National Collegiate Athletic Association Newspaper. Tn 19

games Rudy attempted 164 field goals and made 118 overall. Rudy also led the Elizabeth City State University basketball team in free throws and to be such a small forward, he led the team in rebounds.

Rudy Burton is a 6'4" Junior from Chester, Pennsylvania. He graduated from Chester High School where he held the highest rebounding record his junior year.

When Rudy was recruited to play ball for Elizabeth City, he didn't start but says, "I came off the bench."

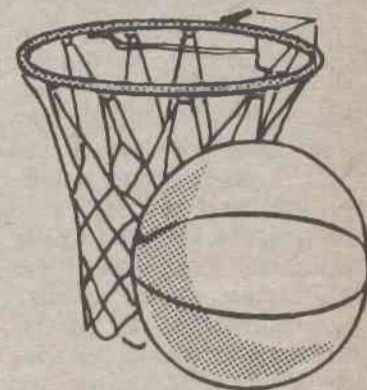
Last year he had a knee injury which caused him to sit out. This year he had a back injury during a Virginia State game which caused him to sit out of the Fayetteville State game and the St. Augustine game. It seems as though with every injury Rudy Burton gets better and better.

Rudy feels he was a great asset to the team, because he did his job and maybe a little

bit more but he felt he could've done better if he had gotten the ball a little bit more.

Rudy doesn't know if he is going to play ball next year but if he does, the spectators should be prepared because he plans to strive for more.

Coach Vaughn uses Rudy Burton in comparison to a former basketball player, Ivory Grooms; he said, "He is a man with many moves."



Sports

Stadium? Finally?

by Gary Savage

Well sports fans, the way things are shaping up, we will be playing our first home football game at Roebuck Stadium. The building plans have been in process for two years and the stadium is nearly finished; despite the Athletic Department's upsets. Reaganomics is a factor that affected the building of the stadium and there were cutbacks on the stadium seats from 5,000 to 4,000. However, they are built for future expansions.

Since the Athletic Department is self-supported, students are charged \$5,000 a year for athletic fees and the state will not give funding to the department until all state required fees are paid. The majority of the construction of the stadium has come from the alumni and private donors.

Mr. Roebuck, owner of all S & R stores has been the largest private donor. He donated \$125,000 and challenged ECSU to meet the offer three to one. Unfortunately, this challenge has not been met. The alumni donated about \$30,000 and the faculty nearly \$10,000.

Students slowed down the progress heavily by loaning I.D. cards to non enrolled students and friends. The Athletic Department may lose up to \$9,000 a year due to the loaning of the I.D. Students need to realize that this does not help the expansion of the University. It also hurts student Grants and Aid.

Other factors that have slowed the progress are student participation, and the previous football debts. When the football games were held at Northeastern's Stadium, it

cost the Athletic Department \$1,000 per game and also with team travels costs for boarding and feeding the players at other Universities. This is a big load for a self-supported department.

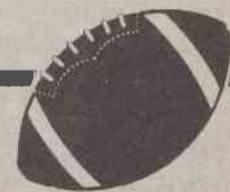
Many people assume that the state is supporting the progress of the building. The state built the fence, field, and the track. The stands, restrooms, and utilities are a part of the independent donations. Coach R. L. Vaughn, Athletic Director, has been the largest donor on campus. He donated \$1,800 to the Athletic Department because he believes in the finishing of the project. Coach Vaughn hopes that the student organizations will contribute to the project. A donation of \$300 will buy a row of seats with the donors name on it. Coach Vaughn has bought six rows of seats.

The stadium will help the University with bills for the Athletic Department and for the University as a whole. One member of the University family offers his services by volunteering to be sports caster. When asked to comment on his services, Dr. Ghee replied, "Well, it's just something I like to do." There are others of the University family who have volunteered their services and should be highly thanked and recognized. Without students and faculty like this, we might still be without a stadium.



Remember to Vote on the 22

Congratulations



Class of '83

"Kareem and Hershel"

This time you will make history by voting in Timothy Okeke Vice-President of your SGA. Your "VARIETY" will then be the "Spice of ECSU"