

ENTERTAINMENT

ECSU singing group schedules busy spring

Six ECSU students may be singing their way to the top of the music industry. At least that's their goal.

The young men, known as "Esquire", have been singing together for three years. Three of the members "discovered" one another when they were competing for the lead in a campus talent show. After listening to each other audition, they put their heads, and voices, together and formed the core group. Those original three are Jerry Cameron, 21, of Durham, N.C., Jerry Dortch, 21, of Durham, N.C., and Michael Chapman, 22, of Baltimore, Maryland. Three more voices were added later: Vincent Morton, 20, of Wake Forest, N.C.,

Leon Hester, 22, of Wilmington, N.C., and Willie Robertson, 22, of Levittown, Pa. Robertson is the newest member of the group. Chuck Overton manages the group and Bernard Brooks handles the choreography.

By Deborah Carr
Staff Writer

"We've done more in the last three months," said Hester, "than we've done in the last three years, and we are now beginning to work on more upbeat music."

According to Hester, "Esquire" patterns itself after "The New Edition" and "The Temptations." Their favorite songs include: "It's a Thin

Line Between Love and Hate," "Sweet November," "It's So Hard to Say Goodbye To Yesterday," "Here I Go Again," and "Look After Love."

Promotion means as much as talent in the highly competitive world of entertainment.

"We are planning a spring concert," said Chapman, "and the vice-president of RCA records is supposed to attend. We are also going to have a few fund-raisers plus sell 'Esquire' t-shirts."

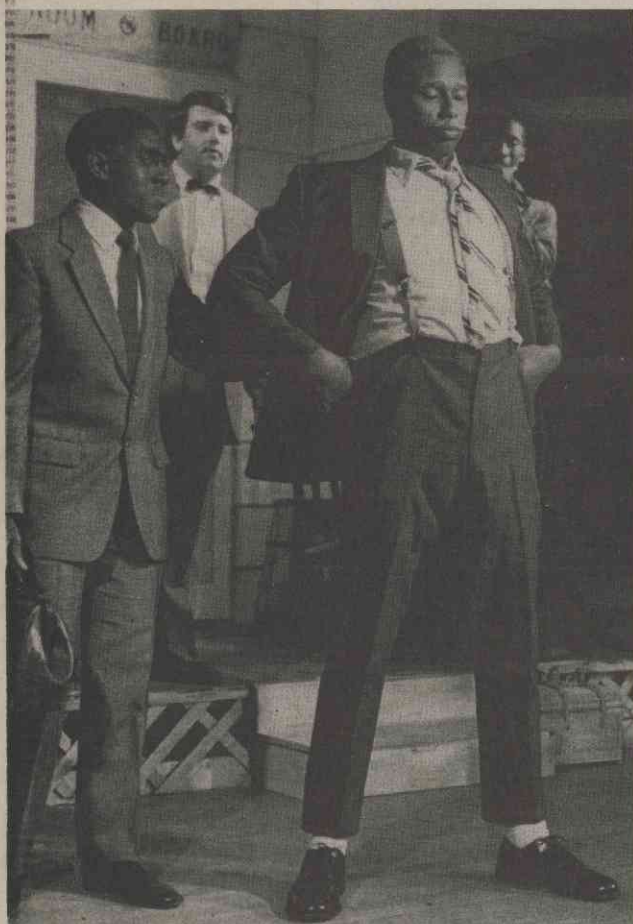
The group has already performed in Wilmington, Edenton, in the ECSU Showcase, at the ECSU Coronation Ball, and was the opening act for the Homecoming '86 Concert.



Photo by Kevin Cox

"Esquire" members, L-R, Michael Chapman, Jerry Cameron, Jerry Dortch, Leon Hester, Vincent Morton, Willie Robertson. Not pictured are Chuck Overton, manager, and Bernard Brooks, choreographer.

"Angel" production impressive



Fitzgerald Warren as W.O. Gant gets a helping hand from Charles Jennings as Doctor Maguire in a scene from the production of "Look

Homeward Angel." James H. Gibbs as Hugh Barton and Stephen Michael Allen as Eugene Gant look on.

The Little Theatre of ECSU was once again transformed into a forum of entertainment November 5-9 when the University Players performed the Pulitzer Prize play, "Look Homeward, Angel" by Ketti Frings based on Thomas Wolfe's novel of the same title.

"Angel" is a comedy-drama which reveals the lifestyle of the Gant family in the early twentieth century. Eliza (Rosa Sawyer) is the power-hungry, self-centered wife of W.O. Gant, an old stone cutter who occasionally "cuts up" when intoxicated by alcohol. She is so pre-occupied with making money through real estate and keeping boarders at the Dixieland Boarding house, that the rebellious son, Ben (Gary Shearod) has assumed the responsibility of teaching his younger brother Eugene (Stephen Allen) about life.

Through the actions of Eugene, who experiences metamorphosis from adolescence to becoming an adult, the audience relates to parent-child communication gaps, the ambitions of youth, and the joy and pain that first love affair.

It is this love affair which eventually opens Eugene's eyes to the ways of the world when Laura James (Traci Godbold) leaves near the end of the play when Eugene's heart is set on marriage. (Welcome to the real world.)

The costuming, scenery, and speech authentically reflected the lifestyle of early twentieth century life and the set was built strategically to allow free and effective movement on stage. Except for one scene, all action took place at the Dixieland Boarding House, either on the porch or in W.O.'s bedroom, which was designed in such a way that scenes within that room, when lit, could be seen through a large window. The set designer deserves recognition for creating such a practical workable and realistic set.

By Joe Holley
Staff Writer

Good scenery, costuming, and lighting can all be ineffective when the cast does not carry out the action well or the dialogue fails to express moods or convey meaning to the audience. Neither was the case with cast of "Angel," for they presented a most convincing dramatization of this play. "Look Homeward Angel" is certainly a realistic observation of life which affords the audience the opportunity to reflect on characters of diversified personalities. But, as mentioned earlier, the cast worked so well together that the play was just as big as life itself—different people, attitudes, goals and ideas; they make the world go 'round and made "Angel" a successful production.

ALBUM REVIEWS

Aretha, Jarreau Return

ARETHA -
Aretha Franklin (Arista)

Aretha Franklin returns to the charts after the very successful "Who's Zooming Who" Lp which yielded three top ten hits, including the number one "Freeway of Love." The "Queen of Soul" is again teaming with producer Narada Michael Walden for this nine selection disc. The first single, "Jumping Jack Flash" from the Whoopi Goldberg movie, is a remake of the Rolling Stone classic—with Rolling Stone Keith Richard handling the production duties. (Keith, of course, appears in the video.) The first single has not taken radio by storm but is getting "respectful air play." The second single, "Jimmy Lee" is a song with a medium tempo that should get better response from black radio than did "Flash" because this is a more soulful song with tight background vocals.

Aretha teams with George Michael (formerly of WHAM) for a good song, "I Knew You Were Waiting For Me." This one should do extremely well with radio and the public. George should be honored to sing with the Queen!

Larry Graham (remember him?) returns to the charts with a very soulful performance with Aretha on "If You Need Love Tonight." This Lp is a must for Aretha fans. The lady is still the "Queen."

2 IS FOR LOVER
Al Jarreau (Warner Bros.)

Al Jarreau returns to the studio with producer Nile Rodgers (formerly of CHIC) resulting in this te song Lp. Al Jarreau is the kind of singer who can sin anything. While this a bum is not a "gorilla" as we call it in the business, is a must for any former Nile Rodgers keeps away from the gimmickry often used in today's music, for a good, adult oriented L. Choice cuts are "Tell Wh I Gotta Do"; the second single, "Pleasure," "We Got Telepathy" and "D Ordinary Romance."

The only bad part about this Lp is that it wasn't released in the spring summer for those long drives along the countryside. You can't go wrong!

David Linton
Guest Columnist

"Let there be jazz!"

Do you suffer from the middle-of-the-week-classroom-burnout blahs?

Well, my friend, escapism has arrived in the form of "good ol' funky, get-down jazz."

That's right. Jazz. The Student Services of ECSU sponsors a free jazz hour every other Wednesday at the University Center. All you do is walk in, sit down, and be grooved and soothed by the sounds of the ECSU Jazz Band.

By Joe Holley
Staff Writer

Don't be frightened by the term "jazz" and feel it's not the kind of music you'd like. The music played by Mr. Willie McElroy and crew varies from traditional to fusion and even some jazzy versions of pop tunes. The group also performs original compositions. McElroy plays keyboards,

Vincent Preister blows the alto saxophone, bass is thumped by Kermitt Griffin, and Monte Griffin keeps the rhythm on drums.

Response has been good according to McElroy and other groups are invited to sit-in and share their musical talents during the jazz hour. The ECSU Jazz Band (aka "Tunesia" off-campus) is also available for private parties and other functions. In fact, according to McElroy, it was by playing together in the Outer Banks area during the summer that sparked the organization of jazz hour.

I asked McElroy if this would continue through the spring and again next year.

"I would like for it to continue," he said. "It is a way of enlightening our students and elevating their appreciation of our art form."

As for me, I hope it's the start of a tradition. And you can count on me being here every time.

ECSU presented the Atlantic Express in concert on November 19 in Williams Hall Gymnasium as part of the 1986-87 Lyceum Series.

Atlantic Express is the official stage band of the United States Atlantic command and consists of 17 of the top musicians in the Navy's band program.

Photo by Kevin Cox