

ALWAYS WATCHING



Among other things, Mugabe disregards women's rights

As we celebrate women and their accomplishments this month, let us also remember those who are not as fortunate as we.

"Parade" news magazine (March 22), ranks President Robert Mugabe No. 1 on the list of the world's 10 worst dictators. Mugabe, 85, has been in power since 1980 in Zimbabwe.



STEPHANIE DOUTHIT
EDITOR IN CHIEF

Under his rule, inflation in Zimbabwe has skyrocketed, the unemployment rate has risen to more than 85 percent, health conditions have reached crisis levels, more than 5,000 people have been beaten and tortured, and thousands more women and girls have been brutally raped.

According to the article, the Zimbabwe women are usually the ones who sustain their communities through farming, trading,

cooking and child-rearing.

Members of the Movement for Democratic Change (www.mdczimbabwe.org) -- the main labor-based opposition to the Mugabe regime -- have been trying to collect testimony from victims to bring Mugabe to justice. However, the women assaulted by Mugabe supporters are slow to speak out, if at all. The victims do not want to be humiliated or bring dishonor to their families. And without their crucial testimonies, Mugabe will continue to thrive.

"The bad guys, from the Congo to Zimbabwe to everywhere, have figured out that if you can't afford guns and bullets, and you have a political or military objective, the most effective, efficient strategy to employ is sexual violence," states Paula Donovan, a member of the MDC.

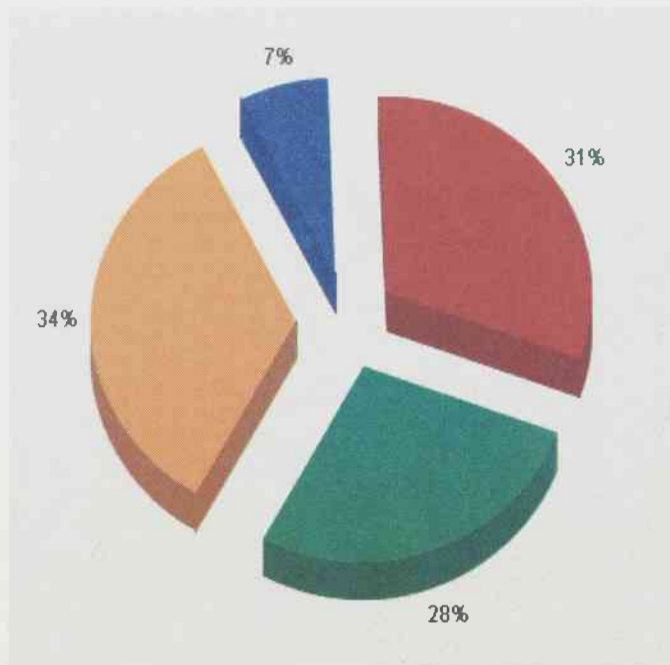
Women's History Month will end after today, but we must create awareness and understanding of the struggles of women worldwide. We live in a politically stable country and are able to provide for our families, yet women in other parts of the world are suffering trying to do the same thing.

It's a humbling thought.

The Parade rankings for the world's 10 worst dictators are based on dictators' human-rights violations, the suffering their leadership has caused and the amount of absolute power they wield. The sources of information include the U.S. State Department, Human Rights Watch, Amnesty International and Reporters Without Borders.

RAMble online poll results

WSSU's '09 Homecoming has been planned on the same date (Oct. 31) as NC Central and NC A&T. What should WSSU do?



Poll results as of March 27:

34% said reschedule the Homecoming game to against Delaware State (Nov. 7).

31% said keep the date (WSSU vs. Hampton)

28% said play the Homecoming game against NC Central (Nov. 14).

7% said change the entire '09 football schedule.

How did WE miss that?

Corrections
March 24 issue

On the Page 5 WHM calendar the date of the Sister Big Bone Pageant is April 8. The Miss ROC Pageant has been cancelled.

The corrections will be made as soon as possible after the error has been brought to the attention of the Editor in Chief at: thenewsargus@yahoo.com

Letter Policy

The News Argus is a student publication of Winston-Salem State University. The News Argus encourages written comments to the editor and guest columns, but some rules apply:

- ❑ A signature, address and phone number must accompany all letters. Letters should be double-spaced and no more than 300 words.
- ❑ Letters will be verified by *The News Argus* by a phone call prior to publication. If *The News Argus* is unable to contact the writer of a letter, the letter will be held until contact is made. Letters intended as advertising will not be published.
- ❑ *The News Argus* does not publish "form letters" or letters sent to multiple newspapers outside the Triad unless the issue discussed in the letter is of importance to the WSSU community.
- ❑ *The News Argus* reserves the right to edit letters and guest columns for clarity, length and libel. *The News Argus* will edit letters that are grossly inaccurate or cross the boundaries of good taste.
- ❑ *The News Argus* allows readers to reply to someone response to any earlier letter only once.
- ❑ Guest columns may be no more than 400 words. *The News Argus* will accept endorsements of candidates, but only one per writer per candidate. The letter may challenge a candidate's record, but no intensely personal attacks will be printed. The News Argus permits candidates to write letters to the editor to specifically respond to another letter.

Campus Crew

The Campus Crew section features comments from WSSU students, faculty and staff randomly selected to answer a provocative question from The News Argus. Comments do not represent the opinions of The News Argus.

Photos by Tiana Stewart

What is the most important quality in a Student Government Association President?



BRITTANY SMITH
JUNIOR

Dedication.



MARCO COLLINS
SENIOR

Commitment.



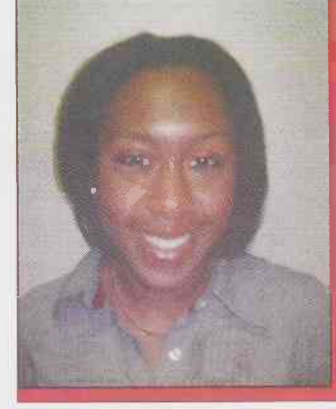
DIEDRE STEWART
UNIVERSITY COLLEGE

Commitment and honesty.



SAMUEL HILL
ACADEMIC ADVISOR

The ability to value the students on campus.



JESSICA DAYE
SENIOR

Dedication, hard-work and commitment.