

# Letters To The Editor

Dear Editor,  
We are writing in reference to the article on the library in the February 9th edition of the "Smoke Signals."

As most students know, regardless of the so-called "quiet hours," it is almost impossible to study in the dormitory because of the noise. Therefore, one resorts to going to the library. However, when he reaches the library, he is surprised to discover that studying is out of the question due to the "philosophy of the friendly librarian."

We do not feel that the library is a place to socialize, but rather, it should have an atmosphere conducive to serious studying, where the students' concentration would not be disturbed by unnecessary noises.

Mr. Bontemps feels that by treating us "like adults," we "respond by respecting the rights of other students." We feel this is an absurd statement since there are those students who show absolutely no consideration for others.

During exam week, we were appalled when the librarian began playing Christmas Carols. This is hardly respecting the rights of the students. Also, another disrespectful element is Mr. Bontemps' loud, disruptive voice, which can be heard throughout the library.

We have been taught that the best condition for studying is quiet. This is the policy of all other college and university libraries except our own. If this were achieved, there is a chance that academic standards at Chowan could be raised.

We have been told that Chowan has one of the best libraries of all junior colleges. It would be interesting to know on what standards the library was rated. It was certainly not judged by its academic atmosphere.

The question at hand would seem to be, "Should the name of the library be changed from 'Whitaker Library' to 'Whitaker Student Union'?"

Sincerely yours,  
Cathy Ritko  
John McDonald

The students of Chowan College complain about rules and regulations until they turn blue; then, when the time comes to elect students to represent them, no one is concerned enough to run for office. Complaints are expected to occur anywhere, however, if anything is to be done to correct them, some sort of action must be taken.

Elections for the offices mentioned earlier were supposed to be held on Thursday, January 27, 1972. When only three people had applied to fill ten offices, we decided to postpone the elections for a week. That put the date to be Thursday, February 3, 1972. Finally, at this time there were three eligible candidates for Freshman Class officers (president and vice president.) Therefore, after a great deal of consideration, instead of holding an official election, we appointed those persons who had shown interest.

There should be no reason for complaints about this matter because of the simple fact that everyone was exposed to the coming up elections through the chapel-assembly programs. The only drawback that was making the decision a little difficult was the matter of write-in votes. However, a write-in candidate would, I am sure, know about his support and if he was interested in running for office would have gone through the application procedure. Therefore, a combined decision ruled out the need for an election.

I am sorry this is the way it had to be, but there was no alternative.

Michael Sternberg  
S.G.A. President

## Chowan Loses 8th Straight

Chowan faces Southwood Wednesday at home at 7:45 p.m. in hopes of snapping an eight-game losing string, after suffering a 92-78 defeat Monday to Frederick Military Academy in Portsmouth.

Chowan led Frederick by five points at one stage of the first half, 34-29, and trailed by only three at intermission, 40-37.

The second half was a familiar story with the Braves slipping further behind. Frederick aided its own cause with excellent outside shooting and held a 20-point lead with eight minutes left. Chowan narrowed the lead to nine, 82-73, but could come no closer as Frederick converted its free throws in one-and-one situations.

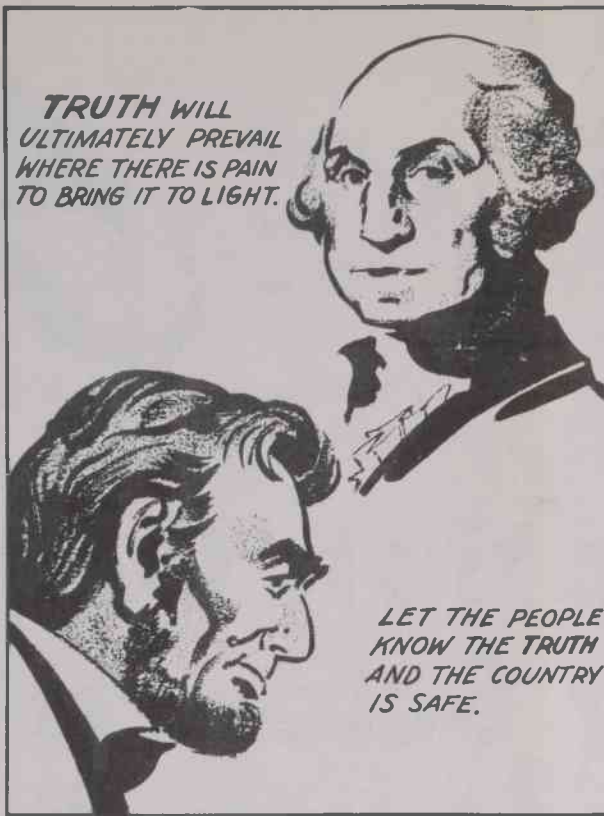
Strait was a land bridge half the width of the United States.

Cuba, Jamaica and other islands of the Caribbean Sea at one time connected Venezuela with Florida. These islands subsided beneath the sea and arose again—leaving only the mountain peaks above the surface.

Did you know that . . . If our globe should tilt off its axis at all, every continent would be engulfed by a fifty-foot tidal wave.

Continents have tides just like the oceans. They are caused by the sun, moon and the push of the oceans. The continent rises and falls just as the ocean tide rises and falls.

Think about it.



AS DISTINGUISHED FROM POLITICIANS

## Lifting Contest Planned

**TO ENTER:** Show up at the gym at 7:30 P.M. and sign up with the Field Supervisor.

**COMPETITION:** (1) Weight groups will be set up at the time of registration for the event.

(2) A. Two-Handed Military Press.

In the starting phase, both hands are placed slightly more than a shoulder width apart on the bar, which lies on the platform just in front of the feet. The head remains up, the neck erect, the back nearly straight, both arms extended, and the knees flexed. The toes must remain parallel and no more than 16 inches apart. In one continuous motion the bar is raised to chest level as the body drops under through the use of a spring and drop to a semisquat position or of a lunge by thrusting the legs into a split position. With the feet no more than 16 inches apart, the bar at chest level for at least two seconds, and the body completely motionless, the second phase is initiated immediately after the referee claps his hands. At this point the bar must be pressed overhead in one continuous motion until both arms are fully extended, simultaneously and

evenly. The body and head may not alter or deviate from the vertical position, the heels must not be raised from the floor, and the legs must remain completely extended. After a two-second pause in this position, the final phase, or return to the starting position, is rapidly performed. Although any type of grip is permitted, the pronated style is most efficient.

(B) Two-handed Snatch.

The bar and the body are in the same positions as for the two-handed military press, with no restriction on width. The bar must now be raised in one continuous motion to an extended position overhead, with the feet aligned and no more than 16 inches apart and the bar must be held for two full seconds with the legs and arms extended. No part of the body other than the feet may contact the platform nor may a jerky or slowing action occur until the wrists turn over, which takes place after the bar passes the height of the head. A split movement or sprint and drop to a squat position expensively lowers the weight of the body under the bar. It is helpful to place the hands slightly wider apart than for two-handed

military press, pull the bar upward and close to the body, and keep the body directly under the weight after utilizing either the split or squat to drop the weight of the body under the bar.

C. Two-Handed Clean and Jerk:

The bar must be brought in one continuous motion up to, but not contacting, the chest through the use of the split or squat before aligning the feet to the limiting width and completely extending the legs. In the final phase, the bar must be raised overhead, with the arms and knees locked, and held for two seconds. The raising force is attained by an explosive flexion and extension of the legs, with the arms simultaneously joining in the effort. The lift is invalid if any part of the body other than the feet contact the platform, the bar touches the body as it moves to the chest position, the elbows contact the thighs as the bar is moved overhead, or the extension overhead is not held for a full two seconds.

(3) Each competitor is granted three trials for each event, with the highest total weight determining the winner (weights of the three trials in each lift are added, then the three lift totals are added together to determine the winner.)

## Cafeteria Minutes Published

Mr. Sutton called the meeting to order. He asked that a list of representatives be made for publication in the Smoke Signals Newspaper. This would inform the students of who they can contact if they have any comments or suggestions to be considered by the Cafeteria Committee.

The meeting was opened for discussion of new business. Mr. Wilson mentioned the complaint that had been voiced by several people concerning the opening of the doors to the Cafeteria before

serving time. The doors are not opened before serving time because students come into the Cafeteria, go into the kitchen, take out glasses and then leave them all over the Cafeteria. This creates a mess before the meal even starts and when these extra glasses are added to the trays left on the table even more unnecessary work is created. Also, students carelessly litter the table and floors with cigarettes and ashes.

Line breaking was the next subject that was discussed. If those who were authorized to give call-downs for line breaking would do so then less line breaking would occur.

The lunch line after Chapel was the next item of discussion. It was mentioned that so far one person's hand, three windows, and a door have been broken during the rush from 11 o'clock Chapel to the Cafeteria. The

## 23rd Psalm Is Paraphrased About Drug Use

Senator Sam J. Ervin, Jr. of North Carolina recently inserted the following paraphrase of the 23rd Psalm into the Congressional Record. These words were the last written by a heroin addict before she killed herself. She was 23 years old.

"King Heroin is my shepherd, I shall always want. He maketh me lie down in the gutters.

He leadeth me beside the troubled waters. He destroyed my soul.

He leadeth me in the paths of wickedness.

Yea, I shall walk through the valley of poverty and will fear no evil for thou, Heroin, are with me.

Thy Needle and Capsule comfort me. Thou strippest the table of groceries in the presence of my family, Thou robbest my head of reason.

My cup of sorrow runneth over. Surely heroin addiction shall stalk me all the days of my life and I will dwell in the House of the Damned forever."

students are now asked to form a single line outside the Cafeteria until the doors are opened.

The possibility of having a juke-box was looked into but no progress was made. It was suggested that the noise factor was too great for one to be enjoyed.

The meeting was then adjourned.

Respectfully submitted,  
Linda Carawan

## Inquiry

By Cricket Strawderman  
Now that the Pub has closed down what would be your suggestions for social activities for Chowan students?

1. Movie theater, building for socializing off campus.

Kathy Barr

2. Place where you can go to eat, drink, and socialize.

Dale Salyers

3. Reopen the baseball field. Trash cans could be set around the field for students emptied. This field is convenient because students can bring their own and is close to school.

Mike McKillips

4. Place where you could get pizzas, beverages, and where one could socialize.

George King

5. More school activities. A place for students to socialize downtown.

6. Open the pits again. Students must realize that if they want these places opened again that they must be more cautious of what they do with their trash.

Lynda Hill

7. Reopen the pits and baseball field. Open a new place similar to the pub. Pack up Chowan College and move it to another city.

Lynn Capps

8. More activities on campus, another building, reopen downtown for socializing.

Herbert Briggs

9. Reopen the pub, have more social activities on campus.

Cindy Mulhern

10. Place where students can get pizza and drinks as well as a place to dance.

Jack Mingin

# Literary Musings

By PROF. ROBERT G. MULDER

## Some Dogs I Have Encountered

Since last semester I have acquired a lovely wife, a colorful puppy, and fifteen extra pounds. The first acquisition has made my life complete, the second has caused me to observe the canine species more carefully, and the third has near-forced me to walk from home to campus three or four times each day.

When it isn't raining and the weather is pleasant, I enjoy my jaunts along the streets and through Holland arboretum by the science building. It normally gives me time to meditate, to plan my work, and to feel a certain harmony with William Wordsworth, who made walking nature rambles famous.

However, Murfreesboro is un"te the Lake District of England in at least one way. Wordsworth did not, I am sure, have to beat the dogs away as he went along minding his own business and observing life about him.

It must have started when I surveyed land for the county in high school—my fear of dogs. On at least three occasions, I was forced to drop my marking board and tape and seek protection in some apple tree tower. Since then big dogs and I do not make friends easily.

Now I don't fear harmless dogs (the likes of our Gertrude), but I refer to vicious dogs, those undisciplined creatures belonging to the neighbors between my house and the campus.

It has become necessary for me to carry a walking stick on each jaunt in order to emphasize that it's distance "between me and thou" that I'm interested in and not licking friendship. I much prefer observation at a distance, but even this removed from personal contact has taught me one thing: dogs are a lot like people.

For instance, there is the loud-mouth. He is heard before he's seen, and the quietude of what could be a peaceful situation is polluted with his discordant

yelps. There is no need to fear this flamboyant creature, however, for he never keeps his mouth closed long enough to do anything constructive. He is usually surrounded by other quieter animals who observe him in amazement and pity.

Next comes the small Napoleon shadow—the dwarf complete with complex et al. Nature unkindly made him little and he must climb upon others to gain authority and attention.

Somewhere along the way he has convinced himself that if he barks long enough, forces himself to the front often enough, and persists in calling attention to himself, the world will take notice. And the world usually does—with loathing and unconcern. There is no need to fear this dog either; he'll always remain a puppy at heart, and just like his Pharisee counterpart, he'll cross the bar in hopes of convincing the Pilot of his loyalty and faithfulness.

One of the glamorous dogs along my route refuses to listen to humanity speak and, therefore, there can be no reasoning with him. His fastidiousness has convinced him that he is the

sharpest thing in town and the polished crop of hair drooping over his ears prevents him from hearing anything to the contrary. Always careful where he steps lest he dirty a paw, he is often reflected playing Narcissus before a crystal pond. This dog barks his untruths the loudest, but soon the wise know to pay little attention to his cacophonous voice in the wilderness.

Then there is the master's pet, pride and joy of the family. Though he is perfectly harmless, one knows that he's around, for he carefully sits on the sideline flashing his pearly grins whenever anyone looks his way. He would not dare bite lest he should displease his master. If he suffers from tongue disease, his master's boots are all the more polished. His soft barks are always heard in triplets.

If these examples are not to be feared, why carry the stick? On my route I have also encountered the dangerous dog, the bad mouth once his teeth are in. On the surface he appears a regular Joe, never barking and often having the audacity to wag his tail; however, don't turn your back on this unpredictable monster. He stalks his human enemy as in the dark, and if you're lucky, you just may recover from the infliction his envious mouth produces.

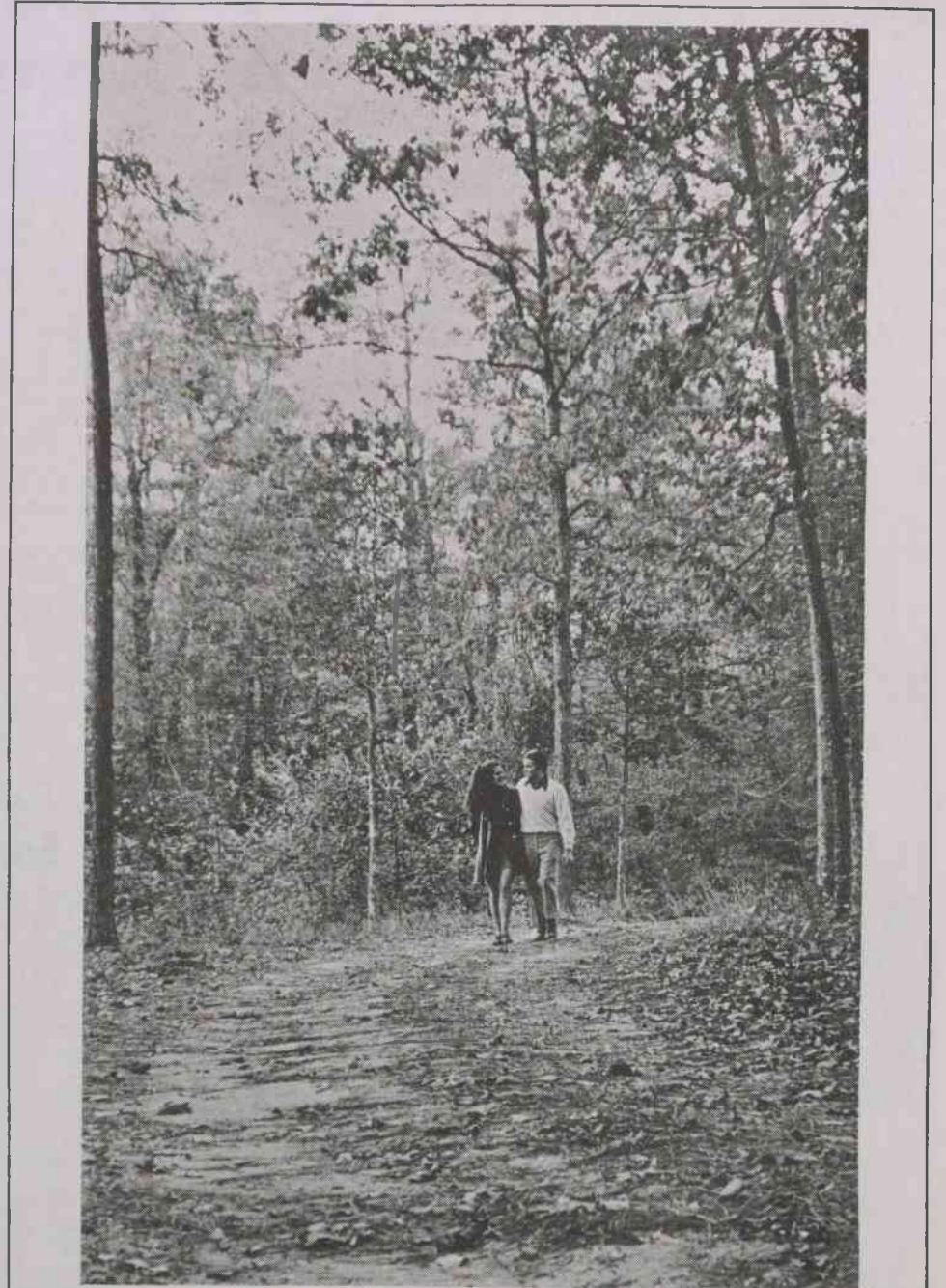
Walking is therapeutic in more ways than one. Since I started three weeks ago, I've lost a little excess weight, but I've gained some dog-gone good understanding and insight about human nature from dogs along the way.

## Students Granted Membership In Drama Society

Fourteen Chowan students were granted membership in Cast 149 of Delta Psi Omega National Dramatic Fraternity on Tuesday, February 1. This organization is recognized in over two hundred colleges and universities in the United States. Membership is conferred upon a student who has met certain qualifications concerning various contributions to drama. Chowan College has been an active chapter since 1968.

Those students who became new members are Gina Buchanan, Richard Chapman, Patti Fallis, Debbie Faulkner, Louis Saunders, Howard Way, Ellen Wallace, Olivia Winslow, Linda Carawan, Ted Dent, Wayne Ferguson, Martha Lynch, Bob Wrenn, and Virginia Roberts.

The Cast Director is Mr. Steve Brannon, Director of the Division of Drama. Students who are interested in becoming a part of this organization should contact him for membership details.



# DISCOVER

A fully accredited four-year church-related liberal arts college for men and women granting the B.A., B.F.A., and B.S. degrees.

ATLANTIC CHRISTIAN COLLEGE  
Wilson, North Carolina

For free wall poster of the photograph in this advertisement and admissions information, write: Director of Admissions, Atlantic Christian College, Wilson, North Carolina 27893.

## CSSO Report Chowan Science Service Organization

Geologists calculate the earth is about four and one-half billion years old. According to the Hess theory, the land masses began to break up and move apart about 250 million years ago. This occurred at the approximate beginning of the dinosaur age.

The continents pushed their way apart, the ocean floor at a rate of a few inches a year. In fact, they are still doing it today.

North America, Europe and Asia are drifting toward the East. Africa remains stationary for the most part. South America is moving and moving westward and Australia is moving northward away from Antarctica.

North and South America, Africa, Australia, Antarctica and other land areas were once a solid land mass. The Bering

## SMOKE SIGNALS

Published Bi-Weekly. Chowan College, Murfreesboro, North Carolina 27855

EDITOR . . . . . Teresa Shoulders  
ASSOCIATE EDITOR . . . . . Carol Denton  
SPORTS EDITOR . . . . . Richard Jackson

### STAFF MEMBERS

Mary Townsend . . . . . Pat Sult  
Bill Bonnell . . . . . Melody Matthews  
Joseph Stinson . . . . . Jim Hunter  
Nancy Long . . . . .

Cricket Strawderman

### PHOTOGRAPHERS

Randy Benson . . . . . Frank Dunton  
Greg Kenan . . . . .