

Wheels of Progress

Address by the President

"The Wheels of Progress"
 "The Wheels of Progress grind slowly." Sometimes the wheels of progress grind so slowly that those of us who are most anxious to witness progress conclude that nothing is being done, that things remain just as they have always been. But, the wheels of progress do grind along, and from the proper perspective of time and judgment we can discern how things differ from the "way it used to be."
 The wheels of progress grind along at Chowan. This morning I want to direct your attention to a couple of things currently "happening" in the campus community—things which have been designed to result in progress towards a better community: academically, religiously, socially. More importantly, I want to invite your participation in these channels towards progress, for they are purposely designed to include student input and outlook towards what the future of Chowan College should be like.

I. INSTITUTIONAL SELF-STUDY
 In the first place, Chowan College is presently engaged in an institutional self-study looking towards the reaffirmation of our accreditation by 1978. Professor Daisy Lou Mixon serves as chairperson. Chowan was first accredited by the Southern Association of Colleges and Schools in 1956. Accreditation was reaffirmed in 1968, following an exhaustive and inclusive self-study. The time has now come to initiate self-study, again, in keeping with the requirement of the Southern Association that every accredited institution must engage in self-study every 10 years.

A self-study must be (1) comprehensive and analytical; it must (2) examine areas for improvement and (3) indicate plans for the future; and it should (4) include input from all segments of the campus community: Board of Trustees, Board of Advisors, Administration, Faculty, Student Body, and Alumni. Ten committees have already begun the work involved in the process of a comprehensive and analytical self-study. It is anticipated that the work of these committees will be complete, subject to review and revision, by the end of the Spring Semester 1977. Now, how do you fit into this process?

A. First, the student members of these committees are there to represent a student perspective. You have the opportunity to contribute to the evaluation of your campus community and to its progress through these representatives. The President of the (1) Student Government Association—Jim Dale, for the current year—is a member of the committee on Purpose, which, in one respect, is the most important of the several committees. I should think that Jim would be open to your ideas as they relate to the purpose of Chowan and how this purpose is implemented through the curricular and co-curricular programming.

The same holds true for the other student members who represent you on other self-study committees. These include the (2) President of Phi Theta Kappa—Anita Perkins, this year—who is a member of the Committee on Educational Program; (3) John Schaefer, President of the Day Student Organization, who serves on the Committee on Library-Learning Resources; (4) Lisa Dabney, President of WRA, who is a member of the Committee on Student Development Services; (5) Steve Bragg, Dormitory Head Resident, who serves on the committee on physical plant; and (6) Paige Heishman, President of Circle K, who is a member of the Committee on Special Activities.

B. Second, many of you are likely to be asked to participate in the self-study process through the use of questionnaires, which may ask for student evaluations of everything from student housing to the effectiveness of the faculty members as teachers and instructors. You will not be expected to use these questionnaires to say only "good things" about everything and everybody—unless, in fact, you honestly see things that way. But, neither will you be expected to use the questionnaires as a means of airing petty, insignificant gripes. It would be hoped and expected that you would respond with honesty and with some sense of good judgement about what is

significant in terms of the progress of the campus community.

II. LONG RANGE PLANNING COMMITTEE
 In addition to the several committees engaged in self-study, a Long Range Planning Committee began its work in October, looking towards the updating of the current Master Plan of the campus. Mr. Joel T. Lee of Aoshkie serves as Chairman of this effort. A primary responsibility of this committee has to do with physical facilities—lands and buildings which are, or ought to be, included in the campus. But this committee is looking beyond mere concern with land and buildings. It has been divided into working sub-committees, dealing with such matters as Enrollment Projections, Faculty-Curriculum Projections, Physical Facilities (specially the need for a new gymnasium-fieldhouse), Financial Resources, and Denominational Relations.

Again, this committee is structured to include student input towards the progress of Chowan for the future. Current

student members include: (1) Jim Dale, President of SGA; (2) Phyllis Holland, Secretary of SGA; and (3) Randy Baldwin, President of the Freshman Class.

I am confident that these students are open to receive your suggestions about what you envision for the future of Chowan College. They want to represent your interests, and will do so to the extent that you communicate with them.

One word of caution. Don't fall into the trap of supposing that every suggestion (by everyone and everybody) will be accepted for the improvement of things as you see them. That is not likely to happen in the democratic process with all my suggestions, or with all of yours. But, on the contrary, don't become skeptical of the process—don't "give up" on the process—if your best ideas are rejected by a majority.

have been President of Chowan College, now, for almost 19 years. If I had resigned the first time I failed to convince others of the immediate ac-

ceptance of some ideas that I thought was great. I probably would not have stayed here for this length of time. If Dean Lowe had resigned his position the first time one of his good ideas failed to gain immediate approval from the departmental chairmen, or the larger faculty, he would not have remained Dean for these eight years. The same holds true for anyone, anywhere (where and when) decisions which are made on the basis of consensus of various persons who are affected by those decisions which ultimately evolve.

Now, what am I saying? The wheels of progress do grind slowly. They do not always move at the pace any one of us might think best or appropriate. But, progress does come, and can be seen by those who stick with the task. As President of Chowan College, I invite your serious participation in these channels towards progress in the days immediately before us, confident that—given the proper perspective of time and judgement—we will all be able to see progress because of what we did at Chowan.

The Committees

LONG-RANGE PLANNING COMMITTEE

- Committee on Energy Projections**
Ben Sutton, Chairman
H. L. Evans, Jr.
Jack Hassell
- Committee on Four-year College Status**
Dr. B. Franklin Lowe, Jr., Chairman
Mrs. Dorothy H. Brown
Mrs. Daisy L. Mixon
Mrs. Geraldine Harris
- Committee on Baptist Relations**
Dr. Hargus Taylor, Chairman
Bob Mullinax
Mrs. Willie Lee Harris
Rowland Pruette

- Committee on Enrollment Projections**
Dean Clayton Lewis, Chairman
Mrs. Dorothy H. Brown
Phyllis Holland
Herman Gatewood
Roland Pruette
Mrs. Joy Dilday
- Committee on Faculty Projection and Curriculum Projections**
Dean B. Franklin Lowe, Jr., Chairman
William R. Raynor
Mrs. Daisy L. Mixon
Randy Baldwin

- Committee on Facilities**
Ben Sutton, Chairman
Jack Hassell
Charles L. Revelle, Sr.
Ollie M. Brown
James Garrison
Mrs. Geraldine Harris
Winston Carter
Randy Baldwin
- Committee on Financial Resources**
Bobby S. Cross, Chairman
E. L. Hollowell
C. A. "Buck" Griffin, II
Mrs. Dorothy Wallace
Ben Sutton

SELF-STUDY COMMITTEES

- STEERING COMMITTEE**
Daisy Lou Mixon, Chairperson
Betty Batchelor
Garth Faile
Herman Gatewood
Hargus Taylor, Editor
B. Franklin Lowe, Jr.
Rowland S. Pruette
- COMMITTEE ON PURPOSE**
Warren Sexton, Chairperson
J. P. Harris
Marianne Jackson
Darrell Nicholson
Guy Revelle, Jr., Trustee
Dave Leber, President of SGA
- COMMITTEE ON ORGANIZATION AND ADMINISTRATION**
Janet Collins, Chairperson
Linwood Farguson
Dell McKelam
David Parker
E. L. Hollowell, Trustee

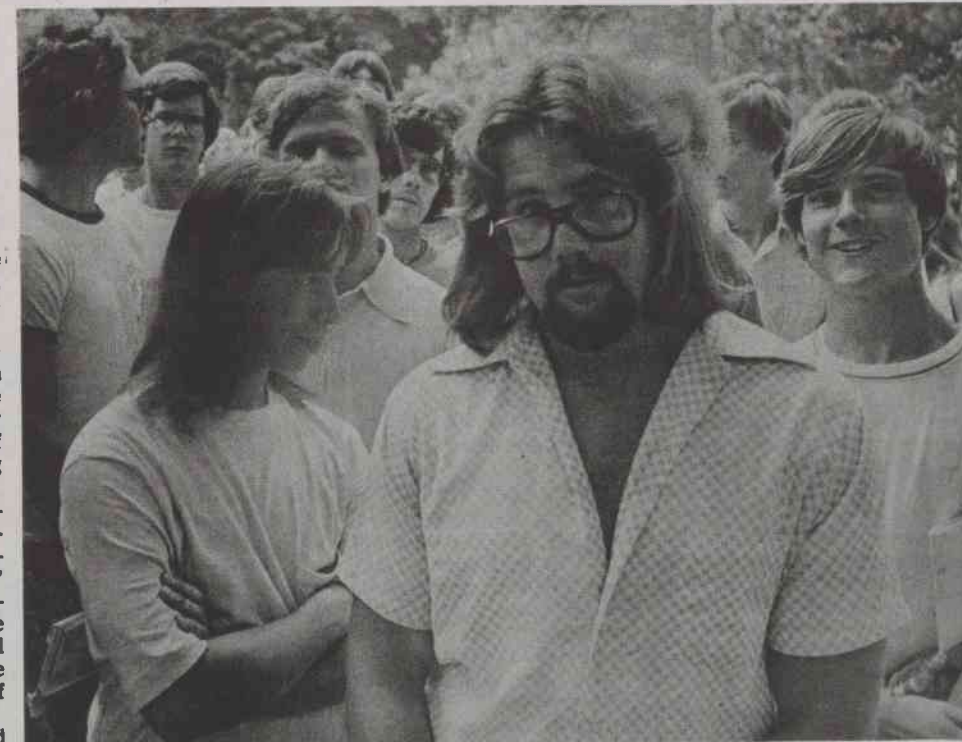
- Sub-Committee on Instruction**
Esther Whitaker, Chairperson
Bill Felker
Charles Paul
Dorothy Wallace
Student - President of Phi Theta Kappa
- COMMITTEE ON FINANCIAL RESOURCES**
L. M. Wallace, Chairperson
Patricia Edwards
Michael Gossey
Ben Sutton, Resource
W. J. Parker, Resource
Bobby Cross, Resource
Douglas White, Trustee
- COMMITTEE ON FACULTY**
James Chamblee, Chairperson
Dwight G. Collier
Linda Trapp
Edward Woolton

- Sub-Committee on Counseling, Guidance, Orientation, Student Discipline, and Student Records**
Hattie Jones, Chairperson
Undine Barnhill
Craig Greene
Cliff Collins, Resource
Wilhelmina Wilcox, Resource
Roy Winslow, Resource
- Sub-Committee on Extra Class Activities: Athletics, Student Government, Student Participation in Institutional Government**
Robert Mulder, Chairperson
Robert Brown
Jerry Hawkins
Kathy Coltran
Clarence (Bucky) Griffin, Alumnus
Phil Royce, Resource
Steve Nelson, Resource
- Sub-Committee on Student Services Housing and Food, Financial Aid, Health Services**
Kenneth Workskill, Chairperson
Hugh Middleton
James Dewar
Peggy Davis
Geraldine Harris, Resource
Carol Sexton, Resource
Tie Coggins, Resource

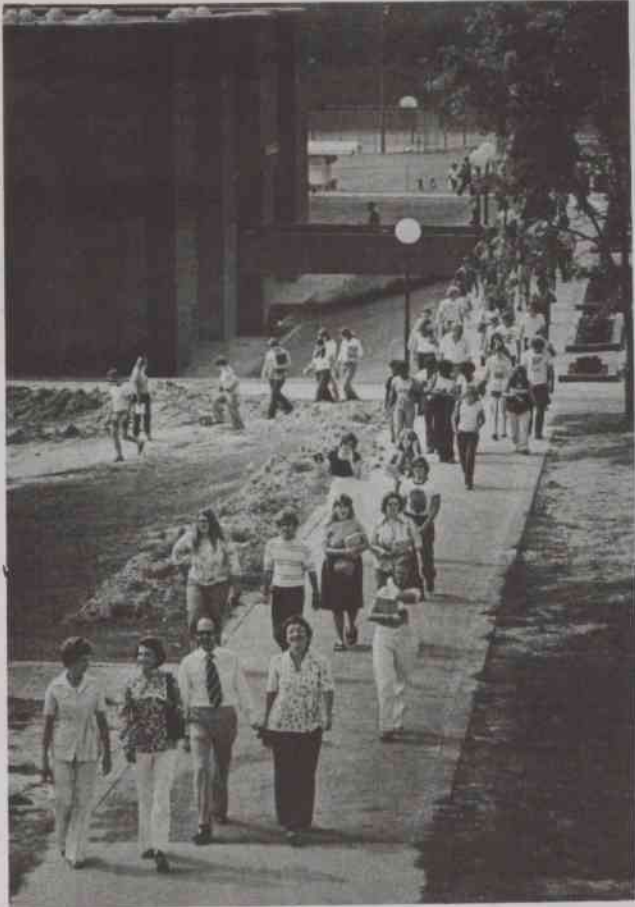
- COMMITTEE ON EDUCATIONAL PROGRAM**
Warren Sexton, Chairperson
Anna Belle Crouch
Andrea Eason
Bill Felker
John Gosnell
George Hazellon
Thomas Ruffin
Carl Simmons
Dorothy Wallace
Esther Whitaker
Maggie Bridgers, Trustee
- Sub-Committee on Admissions and Records**
Carl Simmons, Chairperson
Anna Belle Crouch
Thomas Ruffin
Darrell Nicholson, Resource
Neil Peterson, Resource
Tom Taylor, Resource
Mark Hurst, Resource
- Sub-Committee on Curriculum**
George Hazellon, Chairperson
Andrea Eason
John Gosnell
Maggie Bridgers, Trustee

- COMMITTEE ON LIBRARY-LEARNING RESOURCES**
Kenneth Workskill, Chairperson
Hugh Middleton
James Dewar
Peggy Davis
Geraldine Harris, Resource
Carol Sexton, Resource
Tie Coggins, Resource
- COMMITTEE ON STUDENT DEVELOPMENT SERVICES**
Earl Parker, Chairperson
Undine Barnhill
Robert Brown
Ann Emery
Craig Greene
Acheson Harden
Jerry Hawkins
Hattie Jones
Bill McCraw
Robert Mulder
Kathy Coltran, President of WRA
Clayton Lewis, Resource
Cliff Collins, Resource
Wilhelmina Wilcox, Resource
Phil Royce, Resource
Benne Vann, Resource
Steve Nelson, Resource
Roy Winslow, Resource
Sarah Wright, Resource
Clarence (Bucky) Griffin, Alumnus

- COMMITTEE ON PHYSICAL PLANT**
Gilbert Trapp, Chairperson
Jim Garrison
Earl Parker
Steve Bragg, Student
Bob Hill, Sr., Trustee
Jack Hassell, Resource
Benne Vann, Resource
William McIntyre
- COMMITTEE ON SPECIAL ACTIVITIES**
Phyllis Dewar, Chairperson
Doug Eubank
William McAllister
Nancy Sullivan, President of Circle K
Earl Dilday, Resource
- COMMITTEE ON FUTURE PLANNING**
Daisy Lou Mixon, Chairperson
Betty Batchelor
Garth Faile
Herman Gatewood
B. Franklin Lowe, Jr.
Hargus Taylor
Clayton Lewis, Resource
Rowland Pruette, Resource
Ben Sutton, Resource
Guy Revelle, Jr., Trustee



AT THE HEAD OF THE LINE — A group of students wait patiently to be admitted to the registration rooms at Marks Hall. (WHMc)



ONCE MORE INTO THE BREACH — Students and faculty members return to classes after Fall Concomitance to begin a new year at Chowan. (WHMc)

College Calendar Given for 1976-77

Fall Semester, 1976

- August 19-21, Thursday-Saturday
Faculty Workshop
- August 22, Sunday
Freshman and Transfer Students Arrive. Dormitories Open at 2:00 P. M. Meet in College Stadium at 7:30 P. M.
- August 23-24, Monday-Tuesday
Orientation for Freshman and Transfer Students
- August 23, Monday
Returning Students Arrive
- August 24, Tuesday
Returning Students Meet with Advisors at 8:30 A.M.
- August 25, Wednesday
Registration for Fall Semester Classes
- August 26, Thursday
Fall Semester Classes Begin
- August 27, Friday
Fall Convocation
- September 3, Friday
Last Day Classes May Be Added
- October 8, Friday
Last Day Classes May Be Dropped Without Academic Penalty
- October 11, Monday
Founder's Day
- October 15, Friday
Mid-Term Grading Period
- October 16, Saturday
Homecoming
- October 20, Wednesday
Mid-Term Break Begins at Close of Classes
- October 25, Monday
Classes Resume at 8:00 A. M.

JANUARY							JULY								
S	M	T	W	T	F	S	S	M	T	W	T	F	S		
						1	2	3					1	2	3
4	5	6	7	8	9	10	11	12	13	14	15	16	17	18	19
20	21	22	23	24	25	26	27	28	29	30	31	1	2	3	4
FEBRUARY							AUGUST								
S	M	T	W	T	F	S	S	M	T	W	T	F	S		
						1	2	3	4	5	6	7	8	9	10
11	12	13	14	15	16	17	18	19	20	21	22	23	24	25	26
27	28	29	30	31											
MARCH							SEPTEMBER								
S	M	T	W	T	F	S	S	M	T	W	T	F	S		
						1	2	3	4	5	6	7	8	9	10
11	12	13	14	15	16	17	18	19	20	21	22	23	24	25	26
27	28	29	30	31											
APRIL							OCTOBER								
S	M	T	W	T	F	S	S	M	T	W	T	F	S		
						1	2	3	4	5	6	7	8	9	10
11	12	13	14	15	16	17	18	19	20	21	22	23	24	25	26
27	28	29	30	31											
MAY							NOVEMBER								
S	M	T	W	T	F	S	S	M	T	W	T	F	S		
						1	2	3	4	5	6	7	8	9	10
11	12	13	14	15	16	17	18	19	20	21	22	23	24	25	26
27	28	29	30	31											
JUNE							DECEMBER								
S	M	T	W	T	F	S	S	M	T	W	T	F	S		
						1	2	3	4	5	6	7	8	9	10
11	12	13	14	15	16	17	18	19	20	21	22	23	24	25	26
27	28	29	30	31											

Spring Semester, 1977

- January 7, Friday
Faculty Workshop
- January 9, Sunday
Students Return. Dormitories Open at 2:00 P. M.
- January 10, Monday
Sophomores Meet with Advisors at 8:30 A. M. Freshmen Meet With Advisors at 1:30 P. M.
- January 11, Tuesday
Registration for Spring Semester Classes
- January 12, Wednesday
Spring Semester Classes Begin
- January 14, Friday
Spring Convocation
- January 21, Friday
Last Day Classes May Be Added
- February 25, Friday
Last Day Classes May Be Dropped Without Academic Penalty
- March 4, Friday
Mid-Term Grading Period
- March 11, Friday
Spring Holidays Begin at Close of Classes
- March 21, Monday
Classes Resume at 8:00 A. M.
- March 27-April 1, Monday-Friday
Religious Emphasis Week
- April 8, Friday
Easter Holidays Begin at Close of Classes
- April 12, Tuesday
Classes Resume at 8:00 A. m.
- April 28, Friday
Honors Day
- April 30, Saturday
Spring Festival
- May 6-13, Friday-Friday
Spring Semester Examinations
- May 15, Sunday
Baccalaureate Service
- May 15, Sunday
Graduation Exercises

Van Craze Now Taking Country

By Dick Day
Vice President-Publisher

The current van craze is so accepted that it's easy to forget just how the van phenomenon is. What began as a regional trend in Southern California has become a national pastime for hundreds of thousands of enthusiasts as well as big business for those manufacturers who are aware of the trend.

The Van Craze was put to good use by everyone from campers to the teenagers. The psychedelic micro-bus of the 60's is another direct antecedent of today's custom vans.

Outdoorsmen were quick to see the possibilities of converting a van to a recreational vehicle with all the amenities they had previously found in their campers, so the camper-van is still another branch on the custom van's family tree.

The gradual growth of the van's popularity coincided, in the late 60's and early 70's, with a rekindling of interest in automotive customizing as Federal restrictions phased out the era of Detroit musclecars. The two developments collided on the streets of Southern California and the van boom was born.

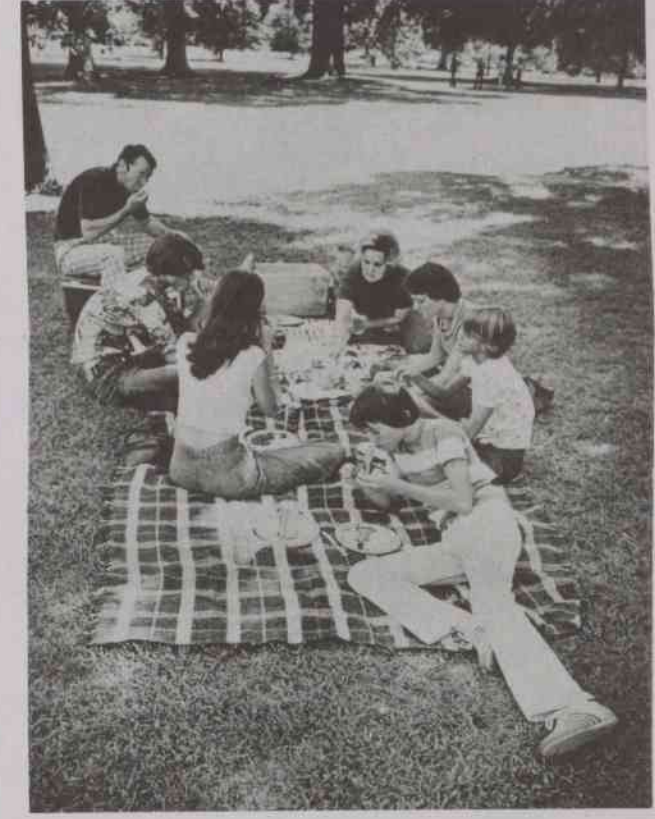
The customized "West Coast" street van - which is now as common as Coca-Cola or bionic television - is still only a part of the van movement. The versatile home on wheels is seen in every imaginable situation: family vans for long hauls with the kids; camper vans built to feed and sleep a crew of off-roaders; spartan haulers - both 2 and 4 wheel drive to drag a brace of

diff bikes to the desert; and the old standby, the surfer van, although now more boards are being carried on roof racks to keep the sand and wax away from the velvet and shag interior.

The best indication that vans are here to stay is the response of the manufacturers. Detroit no longer assumes that their products are headed exclusively for delivery fleets, and has even begun to dabble in factory customizing themselves. Manufacturers and suppliers of van accessories are showing up on every corner, while custom painters and upholsterers are adapting their skills to the demands of the van.

It's hard to know if the van's appeal is versatility, practicality, the possibility for self-expression - for every van is different - or simply the fact they are fun on wheels. However you look at it, vans are as varied as their owners, and are sure to be a permanent part of the American automotive scene for many years ahead—and especially a continuing love affair with young people everywhere.

The ultimate in highway cruising vans is the unique \$18,000 Denimachine, a 1976 Ford Econoline designed by Coca-Cola USA, a division of the Coca-Cola Company, customized by the editors of HOT ROD Magazine and constructed by Van Goodies. This fantastic van is not for sale anywhere. Ten machines will be given away in the Denimachine Sweepstakes for Coca-Cola from August 30 through September 26, 1976. Winners will be advised by mail in early December, 1976.



PICNIC IN SQUIRREL PARK — Karen Meyers, a pre-Architecture student from Hampton, Va. enjoys lunch on the ground with her family. (WHMc)



A LONG WAY BACK HOME — Willie Thompson of Clinton, S. C. drove for 9 hours to bring his brother, C. W. Wilson, to Chowan College. He left Clinton at 5:00 A. M., drove to Murfreesboro, and when this picture was made at 3:00 was planning his return. He expected to return to Clinton around midnight. "It's not the driving that bothers me," said Thompson. "It's getting up to go to work tomorrow." (WHMc)