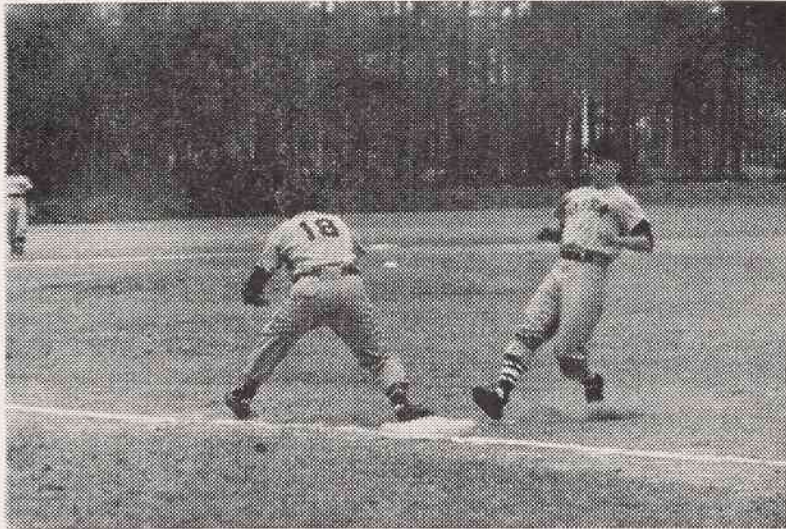


Bishops Lose To Seahawks By 9-2



PITCHER ED SCHULTZ crosses third base in an effort to add another run to Wesleyan's column on the score board.

Wesleyan Miscues Prove Costly In Diamond Battle At Wilmington

The Wilmington College Seahawks took advantage of five Wesleyan errors to score five runs in the eighth inning in Wilmington Tuesday, April 26, to triumph over the Bishops, 9-2.

Going into the bottom of the eighth, Wilmington had only a 4-2 lead, but they combined three hits with the errors to account for the big surge. Wesleyan tallied eight errors during the game.

In the second inning, the Bishops led 2-1. But the Seahawks came back with two runs on three hits and an error to take the lead for the rest of the game.

Wesleyan managed three hits off starting pitcher McDowell, but were held hitless the last six innings, striking out eight batters and getting credit for the win. Andy

Neville, Larry Matthews and Pete House were credited with hits.

Three Bishop hurlers saw action from the mound. Bill Garlow started, but soon gave up to pitcher Don Sessoms, and Ed Schlutz, who finished out the game. Wilmington collected nine hits.

The Bishops' two runs in the second came off an error, a single by Matthews, two infield outs and another error.

Wilmington scored a run in the second on three straight walks and an error added two in the third on a walk, an error and two singles and another in the fourth on a single, a pass ball, and an error.

	R	H	E
WESLEYAN	020	000	000
Wilmington	012	100	05x
	2	3	8
	9	9	6



TENNIS TEAMER BRUCE RAMPE sees action in a tennis meet as he exhibits skill in a singles match.

Tennis Squad Ready For Two Net Meets

On Thursday, the tennis team meets Louisburg College on campus and then journeys Friday to Laurinburg to meet St. Andrews College in two net battles.

Both Louisburg and St. Andrews have proved their ability by scoring wins over Wesleyan in previous games.

Members of the tennis team comprise a tennis ladder, on which names are listed according to ability. Anyone on the ladder may challenge the two men above him to a game in an effort to progress up the ladder.

Joe Norman holds top slot on the ladder, with Williams, Rampe, Womble, Trippette, Dixon, Hines,

Chesson, Shervette, Malcom, McDonald, Black and Creekmore on the various rungs.

Even though the tennis team has no victory in the bag, it is felt that the losses have taught a lot and that the team has shown marked improvement over the season. Next year the team should be on a more even basis with the various competing colleges.

BUNTING, HARDY & MINGES

MEN'S CLOTHING AND FURNISHINGS

"EXCLUSIVE—BUT NOT EXPENSIVE"

ROCKY MOUNT, N. C.



CAROLINA
OFFICE EQUIPMENT CO.
SINCE 1921

FOR
STUDENT AND
FACULTY
SCHOOL AND
OFFICE SUPPLIES
147 S. Main St.

COMPLIMENTS OF
GEHMAN'S
JEWELER



Mebane Shoe Co.
For That New Look In Shoes
Phone GI 2-2689
ROCKY MOUNT, N. C.

Compliments Of
BULLUCK
CLOTHING CO.

PEOPLES
BANK

AND TRUST COMPANY

Extends Best Wishes To
NORTH CAROLINA
WESLEYAN COLLEGE

And Its Administration,
Faculty, Staff and Students

N. C. WESLEYAN KNOWS . . .

The PLACE to BANK
...and SAVE

MEMBER FEDERAL DEPOSIT INSURANCE CORPORATION
MEMBER FEDERAL RESERVE SYSTEM

