

Sadie Hawkins Dance Is Held By Sophomores

Saturday night, Nov. 17, Dogpatch, U.S.A., was the scene for the Sadie Hawkins Dance.

This dance was given as a fund raising project by the Sophomore Class. Bruce Sharer was project chairman.

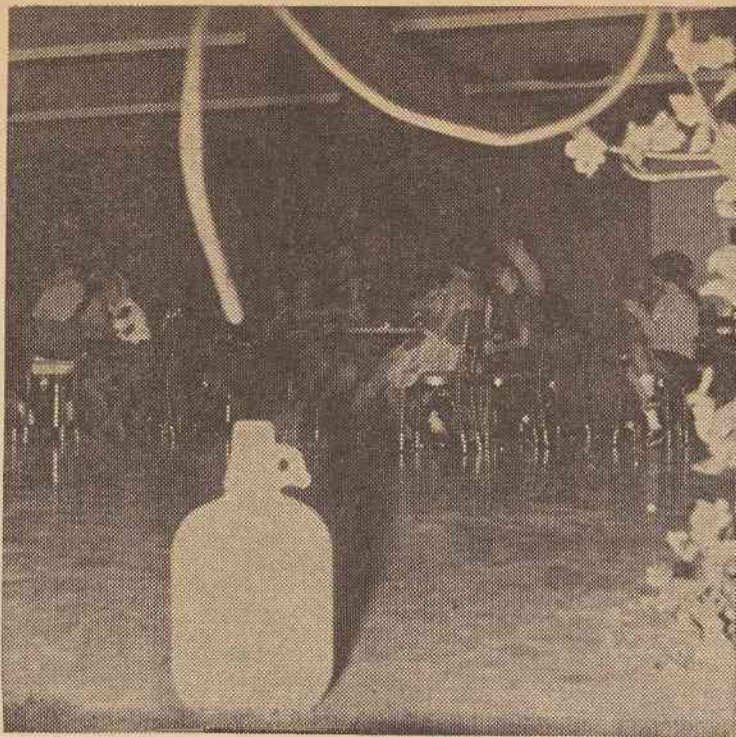
"Doc" Stevens was officially titled "Marryin Sam" and he very dutifully performed services for seven lovely couples. His paltry fee was one quarter. He also performed divorce services for a dime.

Marriage certificates and gold wedding bands were issued to the lucky couples.

Appropriate L'il Abner and Daisy Mae costumes were on the scene. Guy Rouse and Libby Wallace (Mrs. Guy Rouse) won the prizes for the best costumes.

The highlight of the dance was the entertainment by some local guitar-strummin' boys. Some specialties were "The Wanderer" and "Good-by, John."

Mountain dew was served from a specially-built still.



STUDENTS RELAX during break from dancing at the Sadie Hawkins Dance sponsored by the sophomore class.

Recital Is Presented

William S. Newman, pianist, appeared as recitalist in Garber Chapel Tuesday evening, Nov. 20, at 8:15 p. m.

Internationally recognized as author, pianist, and teacher, Dr. Newman has served since 1945 on the music faculty at the University of North Carolina in Chapel Hill.

Dr. Newman is the author of numerous books, including his monumental study of the sonata, published by the University of North Carolina Press. His book, *The Pianist's Problems*, has become a standard text since it was published first in 1950.

He is also the director of the annual Summer Piano Teachers' Clinic held in Chapel Hill.

The recital here included works for piano by Pasquini, Rust, Bach-Busoni, Mendelssohn, Scriabin, and Liszt.

This was one of the numerous appearances Dr. Newman is making this fall as soloist in many cities in the south and east.

Nearly two million tons of meat, poultry, eggs, butter and cheese move through the markets of metropolitan New York City each year.

Woodcuts By Amen On Display In Exhibit Gallery

An exhibit of woodcuts by Irving Amen has been on view in the Exhibit Gallery and will remain through Nov. 26.

Of unusual interest, this exhibit was arranged through the Artists Studio Gallery of New York, some 30 woodcuts are included in the show.

Irving Amen was born in New York City in 1918. He began drawing at the age of four and at fourteen won a scholarship to Pratt Institute.

From 1942 to 1945 he served

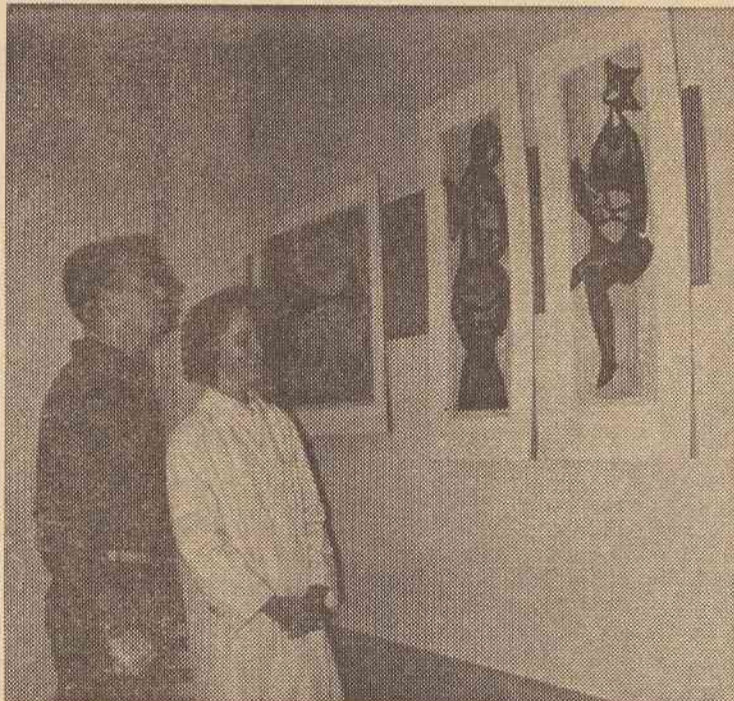
with the armed forces in Europe. He headed a mural project for the Third Air Force and executed murals in the United States and Belgium.

His works are now in the permanent collections of many of the world's leading museums, including the Metropolitan Museum of Art, the Museum of Modern Art, the Library of Congress, the Bibliotheque Nationale in Paris, the Bibliotheque Royale in Brussels, the Bezalel National Museum in Jerusalem,

the Victoria and Albert Museum of London, the Philadelphia Museum of Art, the Boston Museum of Fine Arts, and the Albertina Museum in Vienna.

Jacob Kainen, curator of the Division of Graphic Arts of the Smithsonian Institution, has written of Amen's work:

"His technical brilliance is that of the master who can conjure up the special properties that make the woodcut so fascinating, so nobly rude and yet so limpid and elegant. His mature work has heightened the intensity of his already personal language, based upon traditional disciplines but fresh with the wayward idiom of a new time."



LOUIS WOMBLE AND BETTY JEAN GRISSOM inspect two of the woodcuts on display in the Exhibit Gallery.

Student Life Committee Sponsors Reading Forum

The Student Life Committee, under the direction of Dr. James Cox, is sponsoring, for the second year, the Related Reading Forum.

This year, Mrs. Ann S. Johnson is chairman of this particular section of the committee. The purpose of this is to bring together faculty and student participation in college-wide reading.

The first book under "analysis" is by Jean-Paul Sartre, *No Exit*, and *The Flies*—two plays which present existentialism as the latest tradition in Western philosophy.

Thomas Hanna describes the existential attitude as the combination of a thorough concern for the individual and an almost unbearable honesty in the description of that individual, his universe, and the history which

molds him. Jean Wahl defines the fundamental principles of existentialism as (1) we exist without knowing why and (2) existence lacks essence and therefore is constantly in danger and uncertainty.

Sartre himself says that man is nothing else but that which he makes of himself. He says that man first of all exists, encounters himself, surges up in the world—and then defines himself after this complete process.

The purpose of this forum is to stimulate thought concerning existentialism and to include the modern concept of Christian existentialism. Even though Sartre was an atheist we can find a related position of Christianity in existentialism.

During the first week in December, Dr. Cox and Mr. Jim Tedder will hold an informal debate and discussion session on Sartre's book. Students and faculty are encouraged and invited to participate.

The book is on sale in the book store for approximately one dollar.

COMPLIMENTS OF

**Hal Orr's
MOTEL**

ROCKY MOUNT, N. C.

BUNTING, HARDY & MINGES

MEN'S CLOTHING AND FURNISHINGS

"FORMAL WEAR RENTALS"

ROCKY MOUNT, N. C.

GAY'S HARDWARE

Telephone GIBson 2-1482

122-24 South Howard St.

P. O. Box 928

ROCKY MOUNT, N. C.

Building Material, Artist Supplies, Guns & Ammunition, Gifts, Paints, Household Furnishings, Picture Framing

PEOPLES

BANK AND TRUST COMPANY

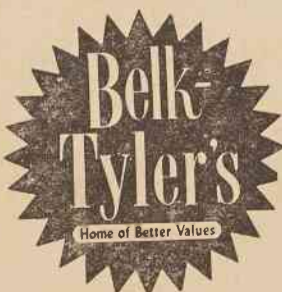
Extends Best Wishes To North Carolina Wesleyan College
And Its Administration, Faculty, Staff and Students.



CAROLINA
OFFICE EQUIPMENT CO.
SINCE 1921

FOR
STUDENT AND
FACULTY
SCHOOL AND
OFFICE SUPPLIES
147 S. Main St.

For Better
Selections
Shop . . .



"Rocky Mount's
LARGEST
Department
Store"

Bank at the . . .

**Bank Of
Rocky Mount**

"Your Friendly Bank . . .
. . . With You In Mind"

Member Federal Deposit Insurance Corporation

Arthur Godfrey

says:

"For more than just
drycleaning, go
Sanitone!"



Bishop Laundry Co.

PICKUPS MONDAY, WEDNESDAY, FRIDAY
SEE YOUR DORMITORY REPRESENTATIVE