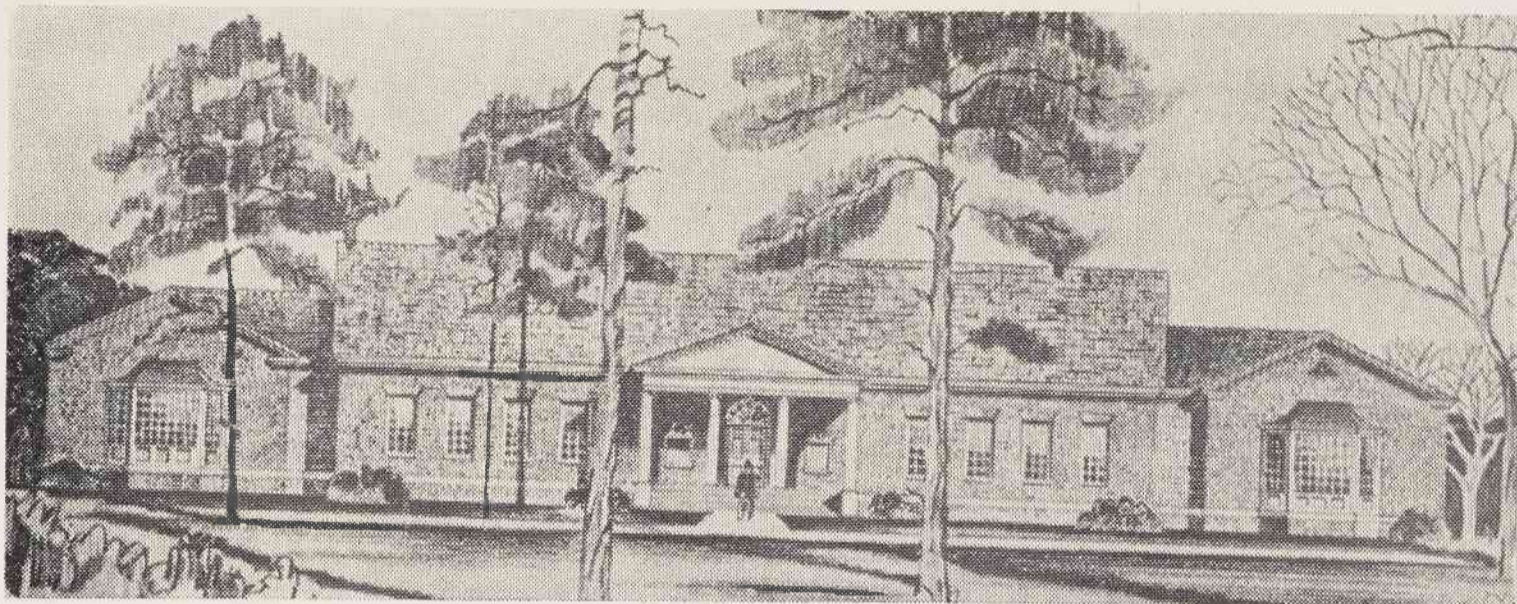


The Wesleyan Decree

Wesleyan Plans For 800 Students In 1968



LASHMIT, JAMES, BROWN & POLLOCK'S DRAWING OF LIBRARY BUILDING

New Facilities And Buildings To Be Added

Eastern Carolina colonial architecture, a broadened academic program, more stringent entrance requirements, and expanded campus activities and organizations will be the keynote of Wesleyan, 1968.

Plans have already been laid for the growth of the college in all these areas, and growth patterns have also been set for religious and social life on campus.

The college administration has set a tentative pattern for student population increase, including about 125 new students per year. The goal of 800 members of the college will be reached by the school year 1967-68. From now on, new facilities will be built, including in the immediate future a gymnasium, library, new dormitories, infirmary, auditorium, and chapel.

Many unique ideas will be incorporated into the buildings, and the original plans drawn by Lashmit, James, Brown & Pollock of Winston-Salem, are constantly being improved.

The basic concept of modified Georgian architecture for the entire college has proven to be quite effective and well received by the entire college and community. This pattern will be continued with all new buildings, and special construction techniques will be used involving completely underground wiring, outside brickwork that will never change in shade or texture, and strongly reinforced walls and foundations.

New structures on campus will look the same age as older ones, thus giving the entire college a unified, totally integrated appearance.

As the student body increases, student government operation will become more detailed. The SGA will work closely with administration to develop full religious and social activities, with agencies inaugurated to supervise these functions. College life will be altered considerably by expanding activities.

Dorm life will even be different with the system of adjoining suites, and greater opportunity for research will be offered with larger library facilities.

The present high faculty standards will be maintained, and entrance and graduation requirements will be strengthened. Senior seminars and independent research will be emphasized for each graduating class. Exclusive curriculum additions will be made, and all major areas of study will be expanded.

With the advent of complete sports facilities, the athletic life of Wesleyan students will be changed considerably.

(Continued on page 4)

Detailed Plans Outlined

New Library Will Be Constructed

Provision for library service for the founding years of Wesleyan was made by leaving partitions out of three classrooms in the administration-classroom building.

But now the time has come when additional space is desperately needed. Architects have been commissioned, and detailed planning for a library building has begun. Contracts are expected to be let in mid-1964.

The architectural and engineering firm of Lashmit, James, Brown & Pollock of Winston-Salem has submitted drawings along with a detailed floor plan for the proposed library building.

The design is Eastern Carolina Colonial, in line with the architectural scheme of the entire college. The building has nearly 13,000 square feet of floor space, and it will hold approximately 70,000 volumes. Seating capacity is 215, and a 6,400 square foot future expansion in the rear of the building is offered.

The floor plan of the Lashmit design shows the building to be almost completely void of dividing interior walls. The entire structure is open except for walls around the offices and mechanical areas. The large room features comfortable seating facilities and much open stack area.

A lobby is incorporated into the entrance of the library with the checkout desk located to the right of the center of the building. Receiving, cataloging, offices, and mechanical areas are in the back of the building proposed by Lashmit.

When detailed planning begins, a group of five prominent North Carolina librarians have agreed to act as consultants.

Mr. Walter Gray, librarian for Wesleyan, has considered the Lashmit designs from every angle. Although he agrees with the basic features of the building, Mr. Gray feels that there should be several changes made in

the original plan. However, these matters will be discussed and ironed out in final design stages.

Mr. Gray also has original ideas that he will recommend incorporating into the design, such as a centrally located smoking and visitors lounge, stack areas with balconies,

and microfilm, faculty study, and typing rooms.

Mr. Gray also suggests that the circulation desks should be located as near the entry as possible, and he hopes that the cataloging and technical processing rooms may be located as far from the study areas as is practical.

New Dorms To Have Suite Arrangement

Mr. Robert Gay stated last week that "the college plans to stay one step ahead of the enrollment in building dormitories."

Preparing for the expected enrollment for next year, 1963-64, a new men's dormitory and a new women's dormitory will be completed. The two new dormitories will be similar to the ones now being occupied with the exception of a section of suites on one end of the first floor in each dormitory. As an experiment, suites will be tried to test their practicality in actual usage. Three sets of suites will be arranged along each side of the hall, with each suite consisting of two bedrooms connected by a half-bath.

All the suites on one side of the hall will be adjoined by connecting doors so that in reality six bedrooms are linked together. On one end of the hall will be a large shower room containing showers and tubs for the use of all of the suites.

More Dorms Planned

Projecting into the near future, several more dormitories are planned. The plans are for the women's dormitories to be arranged in a court with three dormitories surrounding a parking area and two dormitories being built along Tyler Drive.

The men's dormitories will enclose a garden or some type

of court, forming a quadrangle. Forecasting beyond 1968, 11 men's dormitories and only eight women's dormitories are planned. More male students are expected than female.

The possibility of quarters for married students has been discussed. The idea of married students living in sections of the dormitories has been debated, but probably they will reside in apartments constructed by the college in a specific area of the campus.

In fact, faculty members might also reside in those apartments constructed by the college. However, these plans are all in the discussion stage and will not be definitely decided upon until the need for such apartments becomes pressing.

Special Effort

This edition of The Decree represents a special effort on the part of the student newspaper staff to bring students and friends of the college a comprehensive, up-to-date report of Wesleyan's plans for the future.

Book paper, rather than the customary newsprint, was used to present a more attractive appearance.

The stories of Wesleyan's outlook for the future are told in words and pictures.

Scholarship Expansion Is Planned

The Admissions Office of the college recently announced plans for future improvements and college population expansion.

Next year the campus will house and instruct 500 students. There will be 125 new freshmen plus 30 to 40 transfer students. This number of new students is expected to be seen yearly until Wesleyan has enrolled a total of 800 people. The college will probably remain at 800 students for several years, because additional campus residents will require more classroom and dormitory space than has been planned in the first phase of Wesleyan's growth.

Admission standards will not be changed, but the caliber of students will improve with the growth of the college, resulting in a higher degree of classroom competition.

Completely mechanized IBM registration and record-keeping through the McBee System is expected in the future. However, the required machinery is quite expensive and until the number of students exceeds 1,000, the present manual system will be used. Admissions Office personnel feel the system now used is adequate for this period in the history of Wesleyan.

There will definitely be an expansion of the present system for scholarships. As the campus enlarges more scholarships, loans, and work grants will be issued. This year, \$52,000 was used in scholarship funds, and this figure is to be increased to \$78,000 for 1963-64. It is expected that next year there will be approximately 40 students studying at Wesleyan under the Wesleyan Award, the top scholarship now offered.

A guidance program encompassing orientation, counseling, and testing services has already begun and is expected to develop in proportion to growth of the school.