

# Open Letters . . .

To Members of Wesleyan College:

I want to thank each and everyone for such a pleasant visit, and one that I enjoyed every minute.

To the faculty I would like to say it is a marvelous job which you are doing for students throughout the country, and a college which each individual should be well proud of.

This type of training makes a person well proud being part of a great American heritage.

Thank you again.

Sincerely Yours,  
Ival Kennel

To the Administration:

Everyone is aware that the school spirit of Wesleyan is about nil. Many of the students

## Diane Powell Is Honored

By the Executive Committee of the Freshman Class

Diane Powell has been selected as March Freshman of the Month.

As an outstanding Frosh at Wesleyan, Diane has exhibited her ability to work hard and produce pleasing results. An example of this ability was shown by the success of the decorations for the Freshman dance. Diane served as chairman of the decorations committee, and through her careful planning, the decorations proved to be one of the most successful of any previous dance this year. Not only does Diane serve well on committees, but she also maintains a B average.

Diane was an active member in choral work while she was a student at Granby High School, Norfolk, Va. She was a member of the mixed chorus where she served as treasurer, and she was a member of a nine-girl singing group called the "Nonvettes."

In addition to being an active participant in the singing program at Granby, Diane was also one of the girls presented on the Homecoming Court in school in 1962. She also served on other committees in her high school.

Congratulations, Diane Powell, on being chosen Freshman of the Month.

**SEARS**  
ROEBUCK AND CO.

Rocky Mount's  
ONLY  
Complete  
Department Store

- HOME FURNISHINGS
- SPORTSWEAR
- APPLIANCES
- TELEVISION-RADIO
- STEREO-RECORDS
- SPORTING GOODS
- WEARING APPAREL

"Satisfaction guaranteed  
or your money back"

**SEARS**

have been concerned about this and have attempted to remedy the situation. However, it is a known fact that a community which lacks unity usually falls below the excepted standards.

We would like to explain more specifically the present feeling between faculty and students. At various times we have approached the faculty and asked them to join with us in work and recreation. We have even been so bold as to ask them to contribute their time and talents for our selfish enjoyment.

Various activities have been planned by the students to avoid the possibility of Wesleyan becoming a "suitcase college" (if it hasn't already). Time and time again it has been called to our attention that the students are spending their free time in undesirable places. Perhaps if Wesleyan offered a more well-rounded extra-curricular schedule, the students would spend more time on campus. As long as Wesleyan does not unite both faculty and students in areas other than research papers and class lectures, it will never achieve its heights. Of course there are a few who are always willing to help the students any way they can. To those few we extend our sincere thanks.

It has been pointed out to us that the college atmosphere between student and instructor should be most impersonal. This may be true in a large university because the situation forces it to be. Unfortunately some have come to believe that this is the accepted standard. However Wesleyan isn't a university but a small college in which personal contact and cooperation between students and instructors is desirable.

Bruce Sharer, Terry Singer,  
Dodie Waters

### "Gaslight"

If you enjoy thrilling, suspenseful movies, then don't miss "Gaslight," with Charles Boyer, Ingrid Bergman, and Joseph Cotton. It is a chilling classic of dementia about a pianist who murders his wife's wealthy aunt, and then gradually pushes the girl to insanity to inherit her fortune. The movie will be shown in Room 105, Gravely Building, 8:15 p. m., Friday, March 29. It will surely prove worth your while!!

### Montgomery Ward

ROCKY MOUNT, N. C.  
140 N. Main St.

Phones:

Retail 2-1161 Mail Order 2-7465

## Mr. X Observes

After Christmas the Senate began meeting in the Trustee's room in hopes that the enlarged quarters would encourage more student interest in the affairs of their government. However, the resulting student attendance has been nil, indicating above all that the students don't really give a darn whether or not their representatives are endeavoring to represent them fairly.

The events that took place at the Senate meeting Monday, March 18, can only be described as momentous as far as important student government events are concerned; yet, it was reported to me by one S.G.A. senator that only two persons attended the meeting to offer their opinion on a proposed amendment to the By-Laws. Also at this meeting the S.L.A. presented the Senate (via a subcommittee) a new trial procedure, which was accepted and passed. The Student Life Association trial procedure is the concern of every single Wesleyan student — But where was the interest?

Perhaps if I were to point out that a breach of our Constitution on the part of our Senate recently took place, there may be some new interest generated concerning our Student Government. Articles X and XI of the Bylaws provide that all amendments to the college newspaper two weeks prior to the time of being voted on at a Senate meeting . . . Those who should attempt to bypass this point by arguing that the Board of Review amendment was printed and adequately distributed to the student body must realize that their argument is without sound foundation. If we should continue this practice of allowing "ever so small" breeches of the Constitution as long as alternate unauthorized methods are used, then what use is the Constitution? If our Student Government is not willing to abide by the Constitution (which it helped to draw up) to the letter, the time will come when we must either abandon our responsibility of good student government, or else institute a complete re-organization shake up.

Admittedly, the error committed was a small one, but the attack narrated above was not without valid purpose. We must realize that student government is a responsibility, not (as some would have it) a privilege. We must either meet this responsibility with honest determination, or resign ourselves to subjugation by some non-representative governmental authority.

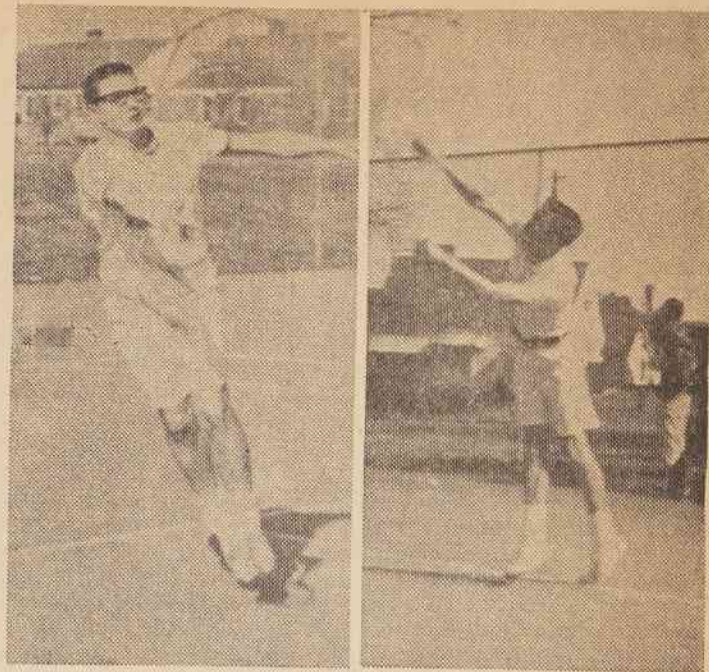
Free classified column now available in the DECREE.

**I. W. ROSE  
DRUG COMPANY**  
112 N. Main St.  
Complete Prescription Service  
— Cosmetics —

## PEOPLES

### BANK AND TRUST COMPANY

Extends Best Wishes To North Carolina Wesleyan College  
And Its Administration, Faculty, Staff and Students.



TENNIS PLAYERS Don Tippet (left) and Bill Bobbitt are shown in action at Atlantic Christian College in Wilson Saturday as the 1963 season opened. The local team lost the match.

## Tennis Team Opens Season With A. C.

The Wesleyan tennis team started its season Saturday, March 23, against Atlantic Christian College, losing with match scores of 3-4.

In spite of handicaps resulting from bad weather conditions and lack of practice sessions, the team made a good showing against the "Bulldogs" of A. C.

The ladder of position, largely determined by the intracollege tennis tournament that was begun but not completed on schedule, is as follows (descending order: Mike Evans, Bill Bobbitt, John Hines, Louis

Womble, Don Tippet, Jerry Chesson, Ansel Malcolm, and Gil Wylie.

As the season progresses, the ladder of positions will change. Set up on a challenge basis (i. e. a player may challenge the man in the position above him and, if he wins, he will exchange positions with the man he defeated), this system is geared to keep up the team's competitive spirit. Observing his team in active competition gave Coach Samuel Hall an opportunity to note the potentialities and weaknesses of his team,

(Continued on page 4)

### GAY'S HARDWARE

Telephone Gibson 2-1482  
122-24 South Howard St.  
P. O. Box 928  
ROCKY MOUNT, N. C.

Building Material, Artist Supplies, Guns & Ammunition, Gifts, Paints, Household Furnishings, Picture Framing



**CAROLINA**  
OFFICE EQUIPMENT CO.  
SINCE 1921

FOR  
STUDENT AND  
FACULTY  
SCHOOL AND  
OFFICE SUPPLIES  
147 S. Main St.

N. C. WESLEYAN KNOWS . . .

The PLACE to BANK  
...and SAVE

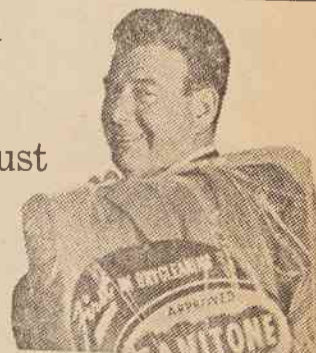
MEMBER FEDERAL DEPOSIT INSURANCE CORPORATION  
MEMBER FEDERAL RESERVE SYSTEM



Arthur Godfrey

says:

"For more than just  
drycleaning, go  
Sanitone!"



## Bishop Laundry Co.

PICKUPS MONDAY, WEDNESDAY, FRIDAY  
SEE YOUR DORMITORY REPRESENTATIVE