

COMMENTARY

BY
MATT GAFFNEY

In the past few weeks there has been a great deal of discussion regarding the content and the attendance policy of the Wesleyan Chapel Service. In all of the comments, it has been taken for granted that the form of the chapel service must remain a part of the Wesleyan environment while the content of those services should be made more beneficial. In effect, the administration is trying to revitalize a corpse and the product will unavoidably be a Frankenstein attempting to glorify God.

The concept of a chapel service is itself illogical, for it was promulgated to eliminate a problem which the administration can not solve and should not attempt to solve. Since the first year of classes, Wesleyan has felt duty bound to keep the flame of faith burning hotly within every member of the Wesleyan community. To attain this end, the administration devised the policy of compulsory chapel attendance, and in the process nullified any hope of success. The administration did not realize that any chapel service designed to appeal to all of the religious

sects on campus would necessarily be so vague that it would

be uninspiring and ineffective. Even if such were not the case, however, it is not the responsibility of the administration to concern itself with the preservation of the Christian attitude in Wesleyan students. The only students who need this type of watchdog service will reject its being crammed down their throats. It is a useless venture which no amount of debating or compromising could improve.

The only logical alternative to this situation is to remove chapel services altogether from the province of the administration. It should become a function of the Inter - Faith Commission, with appropriations from the administration equal to those of the former chapel fund. All of the services should be planned and presented by the Inter - Faith Commission which would have the use of the administration's office facilities. Attendance would be voluntary; the proper and only gauge of its influence upon the student body.



O'QUINLIVAN JOINS LIBRARY STAFF

ROCKY MOUNT--A former military historian and author of the centennial history of Rocky Mount, Michael O'Quinlivan, is the new bibliographer and order librarian at N. C. Wesleyan College.

O'Quinlivan was for 13 years the research historian and head of the Historical Archives and Library at Marine Corps Headquarters, Washington, D. C., the principal research center for the history of the Marine Corps.

His first contact with Wesleyan came while doing research in the college's library for the history of Rocky Mount. Upon completion of the history he became a full-time member of the library staff, participating in its expansion program which included the move into a new one-half million dollar building.

A native of Wilmington and graduate of Rocky Mount High School, O'Quinlivan attended St.

Mary's College, St. Mary, Ky., and Catholic University where he received a B. A. degree in Philosophy. He earned an M. A. degree in American history from the University of North Carolina in 1951.

O'Quinlivan has published several historical pieces, including an article on the Marine Corps in the supplement to the "Dictionary of American History" and several articles in the "Marine Corps Gazette."

He is book review editor for "Military Affairs." He holds membership in the American Historical Association and the American Military Institute of which he is librarian.

Prior to coming to Rocky Mount to begin work on the centennial history, he spent two years travelling and doing private research in the West Indies.



SHEEPHERDER CLEANS HOUSE

Wesleyan's one, and thank goodness, only, died in the wool shepherd, is caught candidly performing his weekly task. Note the finesse he displays as he gently and tenderly cleanses each fiber, the immaculate hanging of the garments in order that they catch all the warming and purifying rays of the sun, and the joyful

look on his face as he realizes that in just a few short hours he will once again have some more clean jeans. This was taken just before he prepared for the fall drive. Later, in an exclusive interview, he told this reporter, "Next spring I'll be organizing another drive.

Anyone interested in partici-

pating will be welcomed--those sheep get powerful rowdy after a winter out on the open range around Rocky Mount, especially if a small passel of goats get mixed up with them." With that the old shepherd shouldered his wash, combed the pine tags out of his beard and departed into the sun.

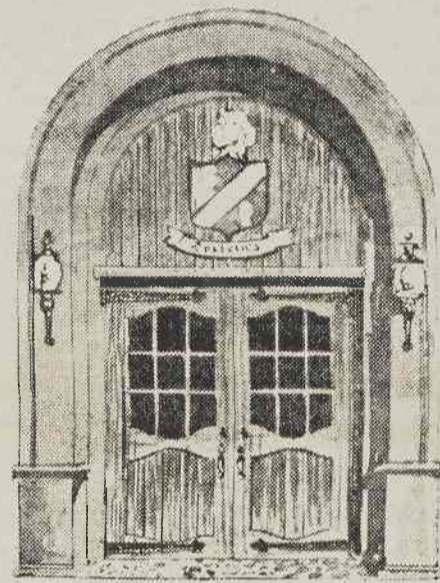
A.S.I.S.

Grand Duchy of Luxembourg--Thousands of American students, male and female have participated over the past 10 years in the American Student Information Service program. ASIS has made this possible to students through their paying jobs in Europe program and low cost tours and flights offered. Each year students pour into Luxembourg City for a short orientation and information seminar on European customs and the European way of life, just before leaving for their jobs that ASIS has located and arranged for all over Europe, from snowcapped Scandinavia to the sunny Iberian Peninsula.

For their 10th anniversary, ASIS, pioneers in jobs abroad, present even a larger and more varying range of available jobs than ever before. Some 15,000 jobs are on file, available any time during the year, waiting to be filled by American students. Most jobs do not require previous experience or foreign language ability. You have your choice of job in any of 15 European countries. Wages range to \$400 a month and room and board is provided for by the employer. Available positions include life-guarding, sales, resort work, child care, office work, hospital work, construction work, camp counseling, and many more.

Why do you hesitate? Remember, jobs are given on a first come first served basis. For a fun-filled experience of a life-time, write to American Student Information Service, 22 Avenue de la Liberte, Luxembourg City, Grand Duchy of Luxembourg, Dept. 111, for an illustrated 36 page booklet, giving you all the information about available jobs, special discount tours and flights. A job application form is also included. Please enclose \$2 for overseas handling and air mail reply.

ASIS
Grand Duchy of Luxembourg



NEW DOORS TO FASHION FOR TRADITIONAL WEAR FOR MEN BY:

Botany — Cheswick — Doncaster — Don-Lee — Mavest— London Fog — French Shriner — Sero — Pendleton—Zero King — Reis of New Haven — Stratford — Buxton — Canterbury — Austin Hill — Lord Jeff — Cox-Moore — St. John Ltd. — Thane — Reis — Royall Lyme — Gold Cup

Plus Our New Lady Manhattan Shop
Featuring Country Cousin Casuals Expressly Designed For The Young Lady

Epstein's Cordially Invites You To Open Your New Charge Account

NOW 3 WAYS TO CHARGE
30 OR 60 OR 90 DAY PLAN
10 MONTH EXTENDED PLAN

DOWNTOWN ROCKY MOUNT
We Honor First Union Charge Cards

