

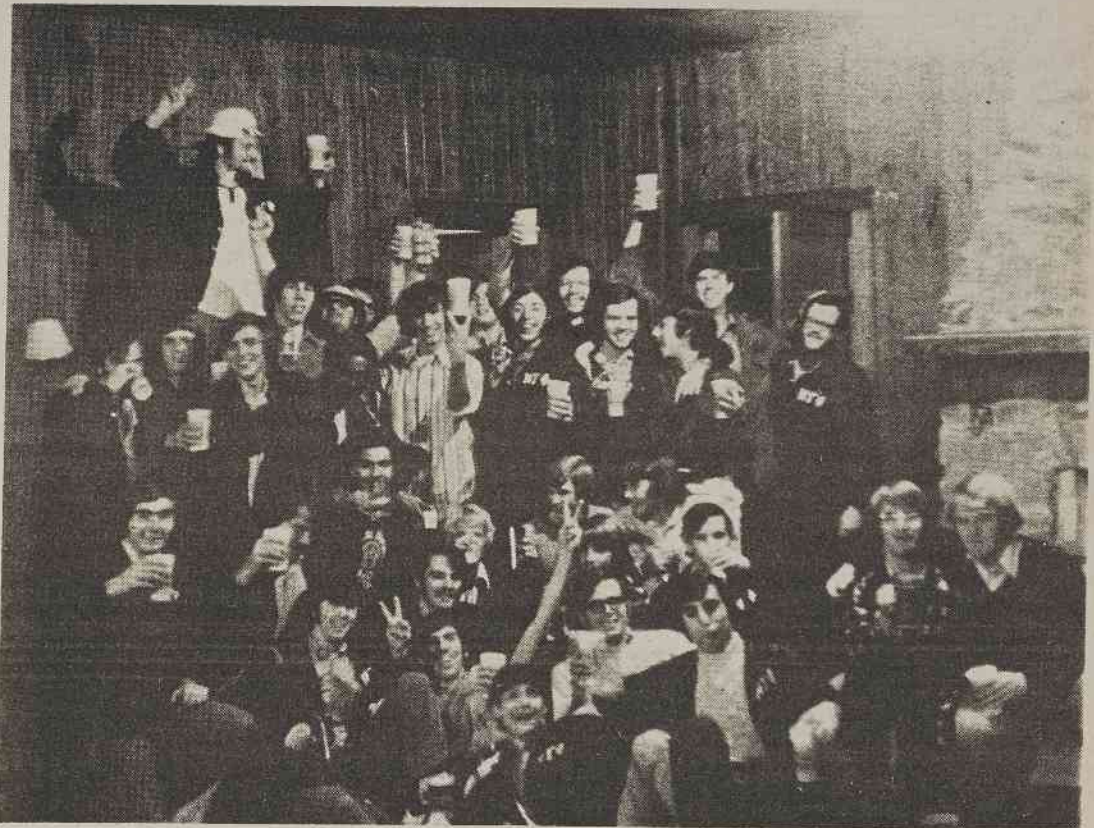
NU GAMMA PHI

The men of Nu Gamma Phi believe that rush week is a time during which you look at the brotherhood and the brotherhood looks at you. It is a time during which you make your decision to become a part of the future with Nu Gamma Phi. We will not attempt in this article to answer such questions as who are the brothers, where do they come from, what are their majors, and why they joined the brotherhood of Nu Gamma Phi. We would prefer to answer any questions you have on a more personal basis. Therefore, we invite you to come to our fraternity lounge anytime and rap with the brothers of Nu Gamma Phi.

Fraternalities on campus all strive for that intangible quality, brotherhood. Consequently, an elaboration on brotherhood would not differentiate one organization from the other. Furthermore, that is one of the purposes of rush and pledge. Nu Gamma Phi, therefore, stands apart from other Wesleyan fraternities not because of its brotherhood, but because of what it does with its brotherhood.

Chartered in 1967, Nu Gamma

Phi was awarded the Dean of Students Award distinguishing it as the best organization on campus. Continuing this distinction, the brothers have won 5 consecutive inter-fraternity basketball games, 3 consecutive inter-pledge basketball games, 3 out of 4 Homecoming bed races, 3 Homecoming display awards, and the 1971 inter-fraternity softball trophy. Additionally, 5 consecutive Nu Gamma Phi sweethearts have reigned as N. C. Wesleyan College Homecoming Queens. The brotherhood has had 3 SGA Presidents, 3 consecutive President Cup recipients (1969-71), distinguishing these brothers as the most outstanding students on campus for their respective years, and presently has 5 brothers -- more than any other greek organization on campus -- as members of the Omicron Delta Kappa National Honor Society. The brothers of Nu Gamma Phi enjoy their social activities -- as pictured here -- as well as their service projects for the Wesleyan and Rocky Mount communities. Nu Gamma Phi has done such things as: sponsor an Easter Egg Hunt for the boys at Fountain School, painting the interior



NU GAMMA PHI FRATERNITY

of the Tank Theatre, refinishing the desks in lecture rooms 101 & 105 and judging a Kite Flying Contest at Fountain Sc-

hool.

As you can see, the brotherhood of Nu Gamma Phi plays an active part in the Wesleyan -

Rocky Mount communities. If you want to play an active part with us, rush and pledge Nu Gamma Phi.

SIGMA OMEGA



SIGMA OMEGA FRATERNITY

On January 31 of 1971, seven young men got together to form a new fraternity for the Wesleyan campus. That fraternity was to stress three major points: a strong fraternal attitude, academic knowledge, and service to the campus and community.

From those ideals grew Sigma Omega Fraternity, the youngest of the three fraternities at Wesleyan. Sigma Omega grew rapidly with the acceptance of ten rushees the first year, and an even larger pledge class the second year.

But the growth of the Brotherhood was not the most important thing that faced the young organization. Sigma Omega found a great store of service projects that it could perform, and it set about doing some.

In its first year, the Brotherhood painted the Red Cross building in Rocky Mount as its major service project, and this year, they decided on an even larger task -- the Heart Fund Basketball Marathon.

Bouncing a ball for 48 continuous hours sounded like a rather simple undertaking when the idea was first brought be-

fore the Brotherhood, but despite its simplicity, Sigma Omega Fraternity was able to raise \$1,400 for the Heart Fund.

Despite this large project, the Brotherhood found the time to usher at all of the performing arts programs, to paint the third floor hall in Edgcombe, and to sponsor a concert in conjunction with WRMT Radio station which brought two fine bands to the campus.

But Sigma Omega Fraternity is not all work and no play. The Fraternity has had many social functions this year and in the past, and enters this year's rush period with a great deal of enthusiasm.

Rush for Sigma Omega is

more than just five parties and more than just boozing it up (even though we do our share of both); it is time for our brothers to meet you, the future pledges of all three fraternities.

We encourage all rushees to visit all three fraternities, and to pick the fraternity that most suits you. We do not pretend to be able to appeal to every prospective rushee on this campus; it would be idiotic to do so.

Thanks is given to Mr. Bobby Thompson for getting the Decree to press during the inclement weather.

--The Editors

Almand's
DISCOUNT
REXALL
DRUGS
130 SOUTH MAIN ST.
9:00 AM - 9:00 PM DAILY - SUNDAY 1:30 - 6:00 PM

**DOWNTOWN
ROCKY MOUNT**

**PHOTO
NEEDS!**

**HEALTH
AND
BEAUTY
AIDS
ALL AT
DISCOUNT
PRICES**

The bank
where people
make the
difference...

Peoples Bank

North Carolina Wesleyan College Library
Rocky Mount, North Carolina 27801

Rush Plans Greek Week

(Continued from Page 1)

end of third floor North Hall for all girls that have been at school for at least one semester. Tuesday there will be an open party at the Dutch Pantry on I-95. Wednesday they will go invitational. Rebecca Rozier, president, sites rush as a time "The sorority introduces to the rushees the meaning of a close sisterhood."

Sigma Phi Delta will have their lounge on third floor North Hall open on Monday the 22nd also. Tuesday night will be their first closed party. The president of Sigma Phi Delta, Carol Diblasi, sees rush as "A chance to meet people, have a good time, and get acquainted with sorority life."

30762