

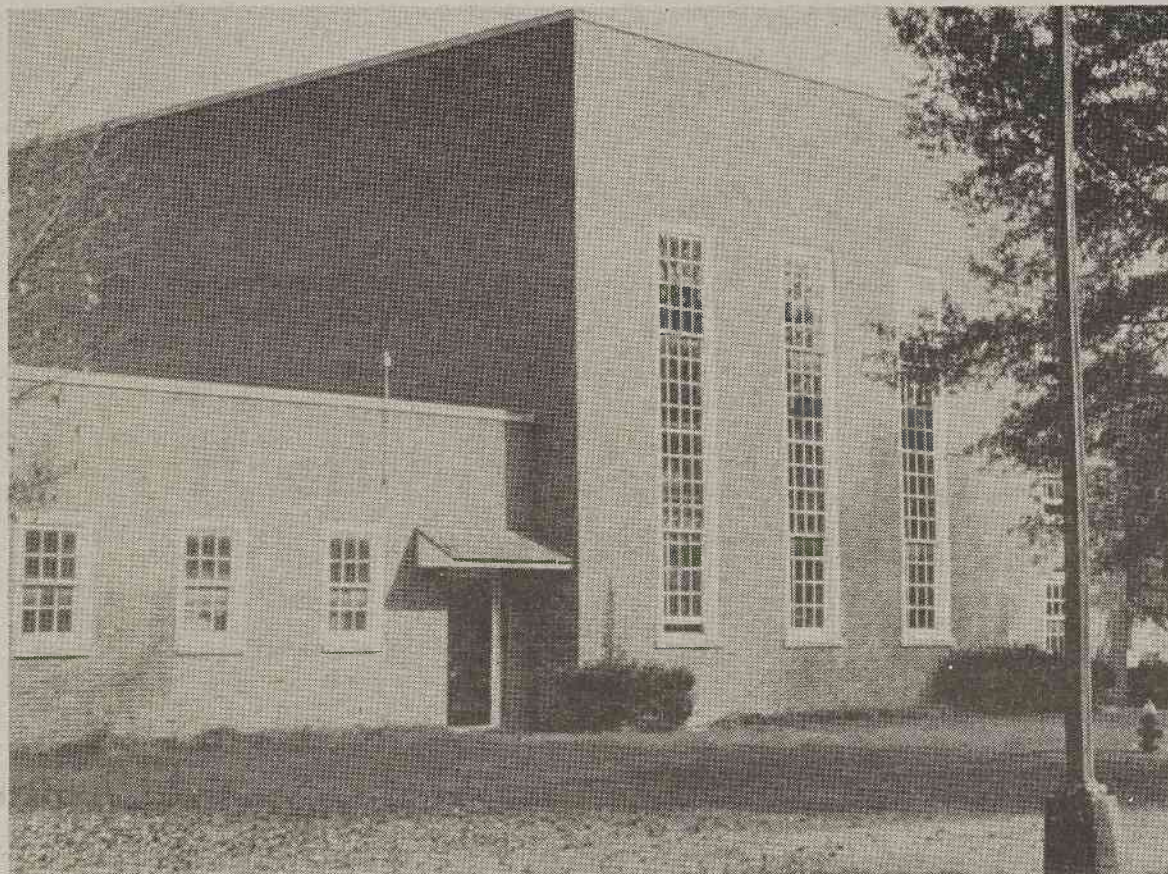


The Decree

VOLUME I, NO. 6

NORTH CAROLINA WESLEYAN COLLEGE, ROCKY MOUNT, N. C.

FRIDAY, NOVEMBER 22, 1985



NEW USE FOR OLD HEATING PLANT — North Carolina Wesleyan College's old heating plant is scheduled to become the new Fine Arts Center as part of a \$12 million capital program by the college. The heating plant, at a cost of about \$2.5 million, will eventually include faculty offices, rehearsal halls, costume storage, and a 1,200-seat auditorium. Until the capital funds are raised, however, construction of the project could be three to five years away. A feasibility study on the project is due to be released by Thanksgiving.

New Center Supported

By REGGIE PONDER, JR.

Members of the North Carolina Wesleyan College community believe that the addition of a Fine Arts Center to the campus would provide many benefits to the institution. Means of raising funds for such a project are now being considered.

Dr. Stephen Fritz, Dean of the College, said, "The plans for a Fine Arts building are being developed; an architect has been on campus several times this year."

Professor Chuck Ackerman, Director of Theatre, believes that the Fine Arts facility is a good idea. "Wesleyan needs it, and the community of Rocky Mount needs it. It would build a tremendous relationship between the community and the College," Ackerman said.

Professor Ron Rodman of the

Music Department believes a Fine Arts Center would benefit Wesleyan. "I think the presence of a good Fine Arts center in this part of the state would revolutionize Wesleyan as a Liberal Arts center and a Fine Arts center," Rodman said. He added, "I wish it were built already. We need an administrator who will push for the Fine Arts Center."

Ackerman is cautiously optimistic about the Fine Arts facility. He says, "A project like this will not happen overnight. I believe we are looking at three to five years before we would have the physical structures in place."

Indeed, the Fine Arts Building cannot be built until more money is available. Steps are being taken to develop means of obtaining funds for the con-

(Continued on Page 4)

Career Planning Works With Students

By NINA SOLOMON

Finding a job after graduation is a very trying task, especially if you are going about it alone. It is sad but true. Many graduates approach the job market unprepared, not knowing what goals they have or skills they offer the employer.

The Career Planning Office, directed by LaRue L. Elliott, provides students with services such as career goal assessing, determining potential employers, resume writing, and developing interview skills.

"Placement is the student finding his/her own job upon graduation by using the services and resources provided by the Career Planning Office," said Elliott.

With the help of the services provided by this office students may explore and articulate their goals. Students get help in clarifying their long-range and short-range goals. The Career Planning Office and Co-Op Education co-sponsor Career Aware-

ness Day. This activity, scheduled for spring semester, will bring company representatives to campus to answer career-related questions for students.

Students are encouraged to complete a credential file. A credential file contains a resume, letters of recommendation from professors and/or employers, and a permission slip which will permit the office to send copies of the students file to employers, at the student's request. Career Planning also provides on campus recruiters, whenever possible. Notices of interviews are posted in the halls and information is given to professors to pass along in their classes. They also provide student tours of companies at the request of faculty.

Career Planning sponsors seminars and speeches. Seminars on resume writing and interview skills are scheduled for spring semester. Students learn what recruiters look for on resumes and during interviews.

Career Planning doesn't end

after graduation. Files are maintained by the office for five years after the students' graduation. Generally recommendations beyond this time limit are not accepted by employers. However, graduates may always use the resources of the office.

The Career Planning office also assists students who want to apply for graduate school. They provide information on the GRE, GMAT, and LSAT. They also sponsor graduate school awareness day. During this day different graduate school recruiters come to Wesleyan to discuss continuing education.

"The Career Planning Office provides assistance, resources, guidance, and support. However, just as it all other facets of life, it is the individual responsibility to land his/her job. The job hunt is time consuming. The student needs to begin now by using the services of the office," said Susan Morris, a career counselor.



COUNSELORS — LaRue Elliott (left), director of the Career Planning Office, discusses counseling needs with counselor Susan Morris.