

FIXER SCHOOL

(Continued from page 7)

Cutting the threads on rods might look easy and simple; however, proper training and experience are essential to getting this job done right. In figure 7, Ballard Shatley observes as Billie Stratton starts cutting threads with a die. Note Stratton is grasping the die handles firmly and has the die perpendicular to the rod.

Other phases of bench work include use of drills and drill presses, counter sinking, proper use of hack saws and filing, and the use of calipers, dividers and squares.

Every mechanic will readily recognize the difficulty of drilling with dull drill bits. Students in the bench course are taught how to grind drill bits as well as the maintenance of other hand tools.

Carliss Long, Plant #6, is an advanced student on KN machines, having been previously enrolled in the fixer school. He had his training in bench work in the previous session and is now training on the machines. In figure 8, Long is checking the heel and toe take-up with Instructor Dotson.

Preliminary instruction on machine operations includes stitch formations, how the sinkers hold the stitch in place, and what happens when sinkers do not function or when the latch does not work.



Figure 7

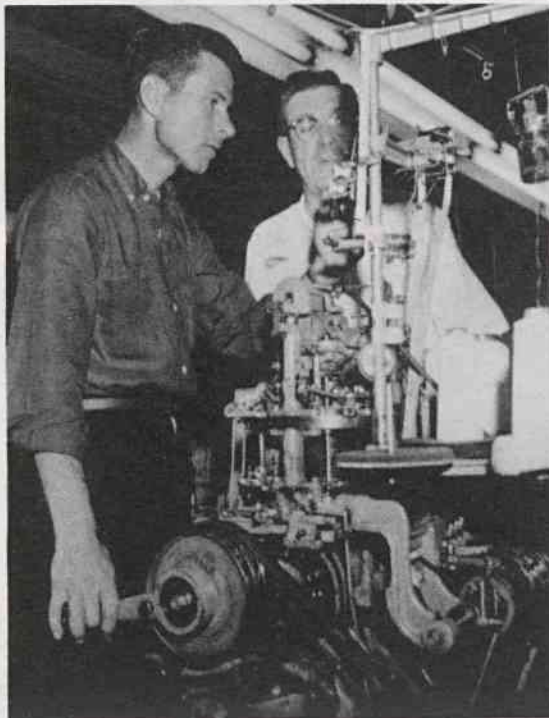


Figure 8