

# Here's what your first year or two at IBM could be like.

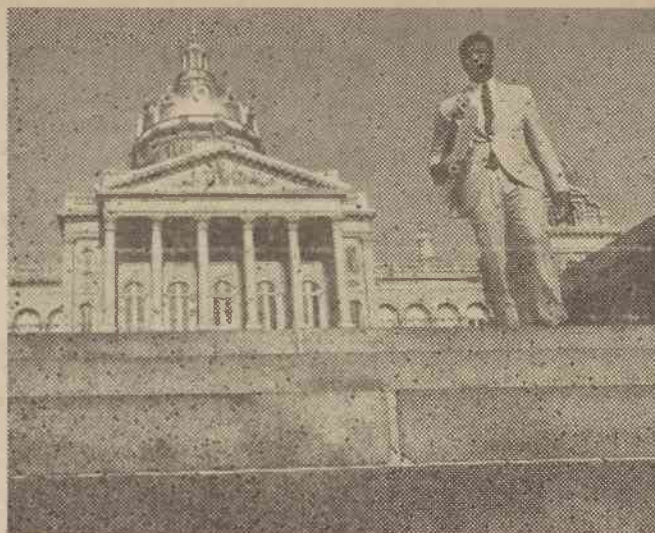
You'll become involved fast. You'll find we delegate responsibility—to the limit of your ability.

At IBM, you'll work individually or on a small team. And be encouraged to contribute your own ideas. You'll advance just as fast and far as your talents can take you.

Here's what three recent graduates are doing.



Soon after his IBM programmer training, John Klayman, B.S. Math '68, began writing programs used by a computer system to schedule every event in the Apollo tracking stations. And when the finished programs were turned over to NASA Goddard Space Flight Center, he was responsible for making them work.



Soon after his intensive training course, IBM marketing representative Preston Love, B.S. '66, started helping key Iowa commissioners solve problems. Like how to introduce school kids to computers, without installing one. His answer: share one in Chicago by phone cable.



Within three months after her IBM programmer training, Mardi Joyner, B.S. Math '68, found a way to streamline a key part of our Management Information System—a computer complex designed to give decision-makers constantly updated data.

Visit your placement office and sign-up for an interview with IBM.

**ON CAMPUS  
OCT. 15, 16**

An Equal Opportunity Employer

# IBM