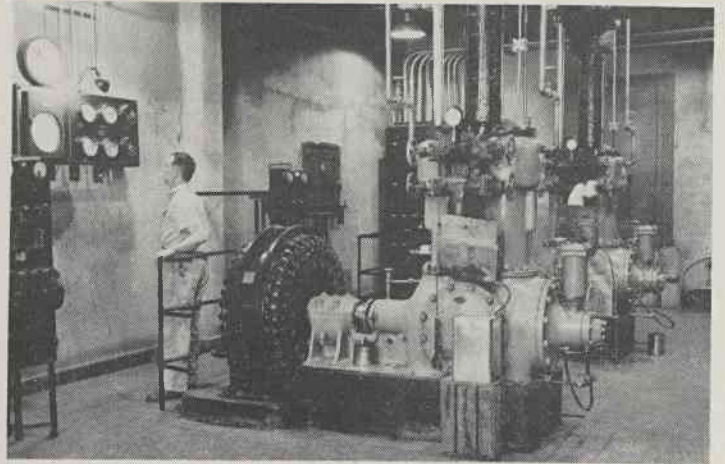
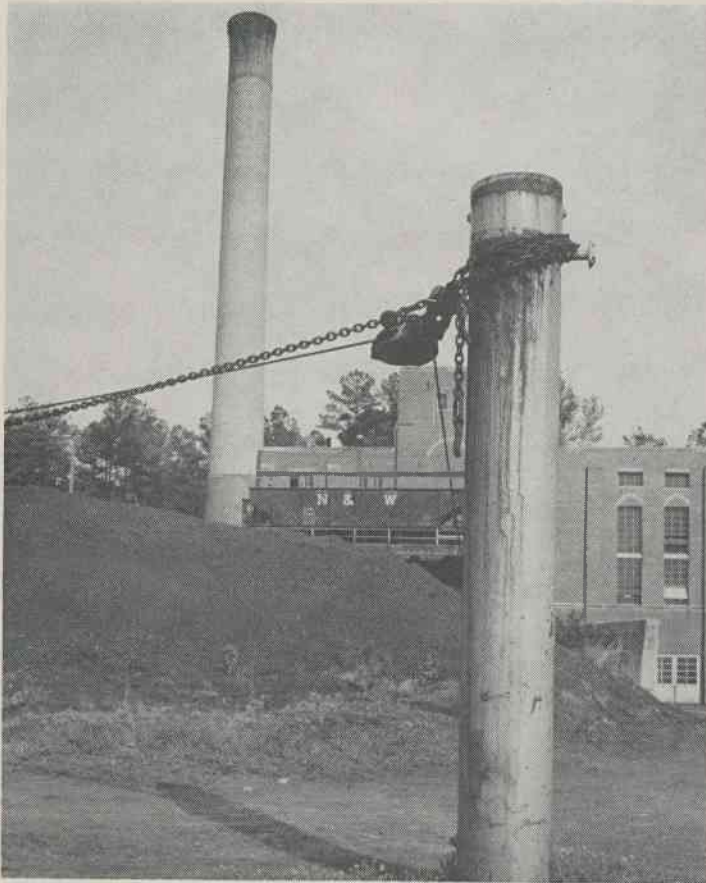


The Steam Plant—unromantic though it may seem—is one of the vital services that must be kept going 24 hours a day, 365 days a year. A crew of 10 men and many thousand of tons of coal are needed each year to keep the wheels of the hospital going.



If you take for granted the endless supply of ice used daily by the hospital, you shouldn't! Here you see the ice plant where most of the ice is made. This monster has been in operation for 30 years. At peak capacity it can make 120 three-hundred pound cakes of ice every 24 hours! Rufus B. Carr is one of the three operators required to man the ice-maker each day. This unit also cools the walk-in refrigerators in the Dietary Department and the morgue. The cakes are transported to the hospital (and other buildings on campus which use ice) in a specially designed panel truck. It is crushed in the hospital and delivered where needed in a stainless steel truck that meets special health department requirements. Modern methods, however, will soon make this giant obsolete. Smaller ice-cube making machines are gradually replacing this throughout the hospital.

Duke photos by Sparks



"This is not a one man operation," according to Chief Engineer Howard. Here he and part of his staff of maintenance supervisors hold one of the many conferences needed to coordinate the myriad of details that fall within their jurisdiction. From left to right around the conference table are Ken Howard, John Dennis (assistant superintendent of utilities), James Bailey (assistant to the engineer in charge of the planning section), Ruben Strange (office manager in charge of accounting), Carl Boy (superintendent of utilities), L. T. Matthews (maintenance engineer in charge of hospital maintenance and renovation), J. C. Dodson (building maintenance superintendent) and John Farrington (assistant superintendent in utilities). With three graduate engineers and many other engineers-by-experience to call on, the rapid expansion of the whole University makes the job of these men a 24-hour a day affair.

