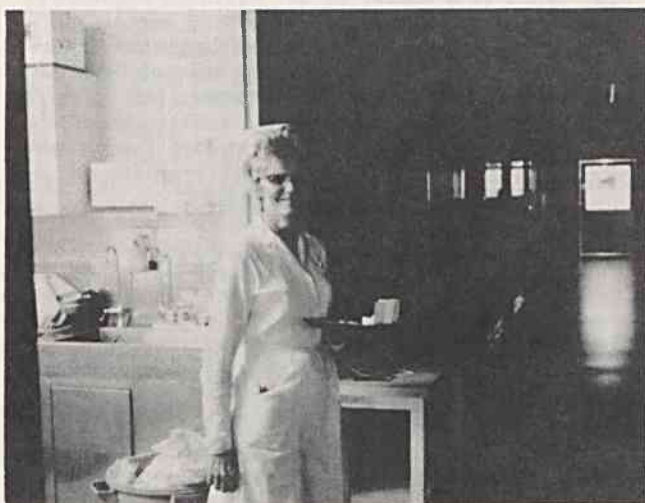




Ron Whitten mans the Admitting Office during the evening hours. Illness and injury has no respect for time, and patients are admitted for care around-the-clock. Mr. Whitten must determine the availability of beds on each ward and coordinate the placement of patients presenting themselves for admission. In addition, he must secure admission data, obtain medical records, and transport patients to the wards.



Mrs. Nellie Hatley is one of many nurses who provides nursing care to patients throughout the evening and night hours. In the absence of the doctor, the nurse must give medication, review the condition of each patient, prepare updated information for oncoming shifts, advise the doctor of any changes in a patient's condition, and coordinate all ward personnel in the delivery of continuous patient care.

## THE MEDICAL CENTER

The Intercom dedicates this issue to the personnel whose service contributes to patient care on the 3-11 tour of duty.

Many believe that the working day ends at 5 p.m. However, for those members of the 3-11 shift, the work day is barely underway at 5 p.m. Hospitalized patients require around-the-clock care, and those persons who man the evening shift provide a vital segment of continued patient care.



Mrs. Anne Parlier and Mrs. Betsy Miller not only control communications within the Medical Center, but also handle all calls into the University community. They must also maintain contact with house officers on duty and on call. Paging is another responsibility of the evening switchboard.



Mr. George Davis is one of the Medical Center Security men who function to insure the safety of the building, equipment and personnel during the evening and night hours.