

# Rehabilitation Moves to New Building

## Erwin Road Structure Offers Patients More

To treat, re-educate and rehabilitate the severely ill, injured or disabled patient is the goal of physicians just moving into the Medical Center's newest building, Rehabilitation II.

An outpatient facility, Rehabilitation II is located on Erwin Road across from Hanes House. The two-story rectangular building is constructed in Duke's traditional Gothic design from Hillsborough stone and precast concrete.

Dr. Saul Boyarsky, professor of urology and newly appointed director of rehabilitation at Duke, defined rehabilitation medicine as one form of comprehensive care. "It offers medical, surgical, psychological, vocational and even social readjustment."

The doctors now located in the new facility specialize in returning patients to productive roles in society. Physical and occupational therapists, vocational counselors, psychologists and social workers also aim, through the team approach, to equip the patient to assume a way of life similar to or in place of the one he followed before he was injured or became ill.

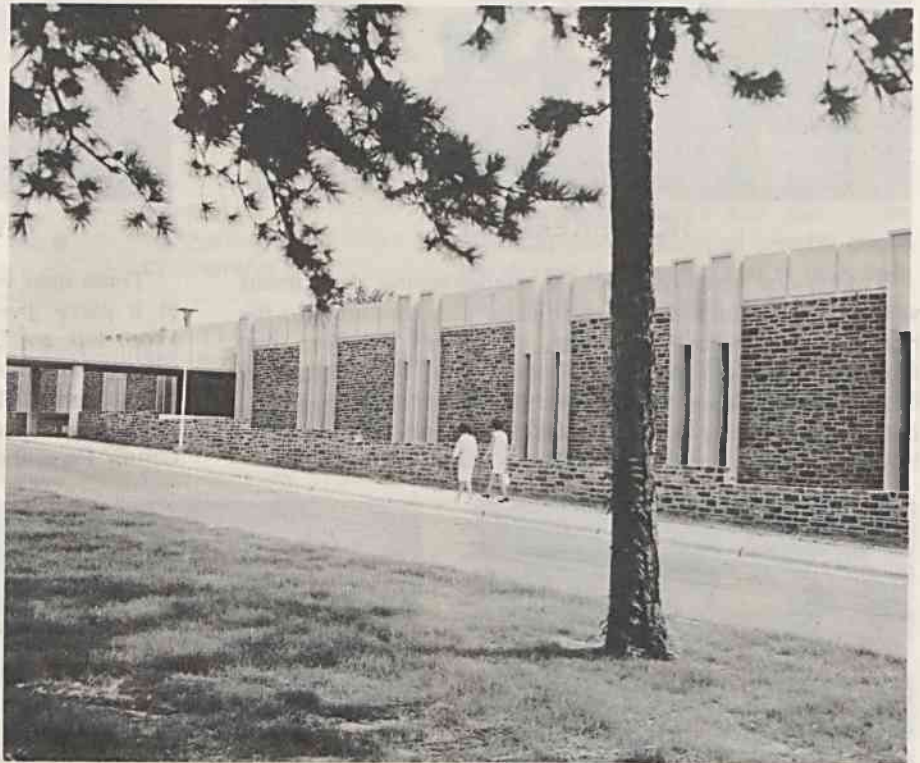
In addition, the center serves as a place where physicians can treat patients with injuries resulting from automobile accidents or burns, children with serious birth defects, the emotionally disturbed and stroke patients.

Dr. Boyarsky noted that the entire spectrum of rehabilitation services will eventually be available.

"If an organ or ability of a person is damaged or lost, that person needs rehabilitation care," Dr. Boyarsky said, explaining the why and how of rehabilitation. "He needs to be taught to compensate for that which is lost or impaired. This can best be accomplished by several specialists cooperating in the treatment of the patient."

In addition to comprehensive care for the rehabilitation patient, the center provides counseling for his family to prepare them to help in the patient's readjustment to home life.

The \$1.1 million facility has nearly 27,000 square feet of floor space, with an



**REHABILITATION II**—Duke's newest building, located on Erwin Road across from Hanes House and the Graduate Center, will house all types of rehabilitation services. The structure has been designed so that an additional two stories can be added in the future. (photo by Thad Sparks)

additional two stories expected to be added in the future to house programs in cystic fibrosis, cerebral palsy, mental retardation and other disorders.

Training programs for nurses, doctors, medical students, therapists and other al-

lied health personnel will be conducted in the center.

The move of Medical Center rehabilitation personnel to the new facility is expected to be completed in the next few weeks.

## Boyarsky Named Rehab Director

Dr. Saul Boyarsky, professor of urology at Duke since 1963, was named director of rehabilitation earlier this year. Dr. Boyarsky will oversee the operation of the Rehabilitation Center as part of his new position.

A native of Burlington, Vt., he earned his B. S. magna cum laude and M. D. cum laude degrees from the University of Vermont. Prior to his appointment at Duke in 1963, he was associate professor of urology at the Albert Einstein College of

Medicine in New York.

The author of a book and more than 125 scientific publications and monographs, Dr. Boyarsky is presently director of urologic research, assistant professor of physiology and part-time chief of urology at the Durham Veterans Administration Hospital. He is a consultant to several national health facilities and agencies. This year he is also serving as chairman of the urology section of the Southern Medical Association.