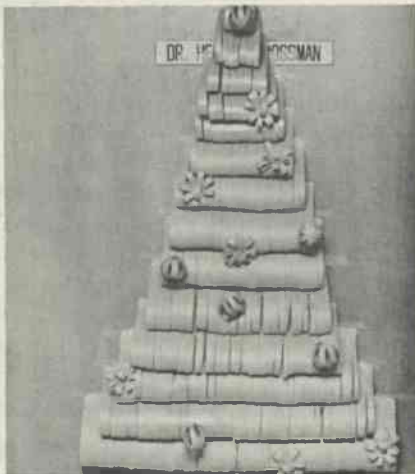


ANALYZING A TREE—The Clinical Chemistry Laboratory rigged up this Christmas tree with plastic tubing from an auto-analyzer. Red and green fluid is flowing through the piping, while test tubes filled with colored water decorate the tips of the branches. (staff photo)

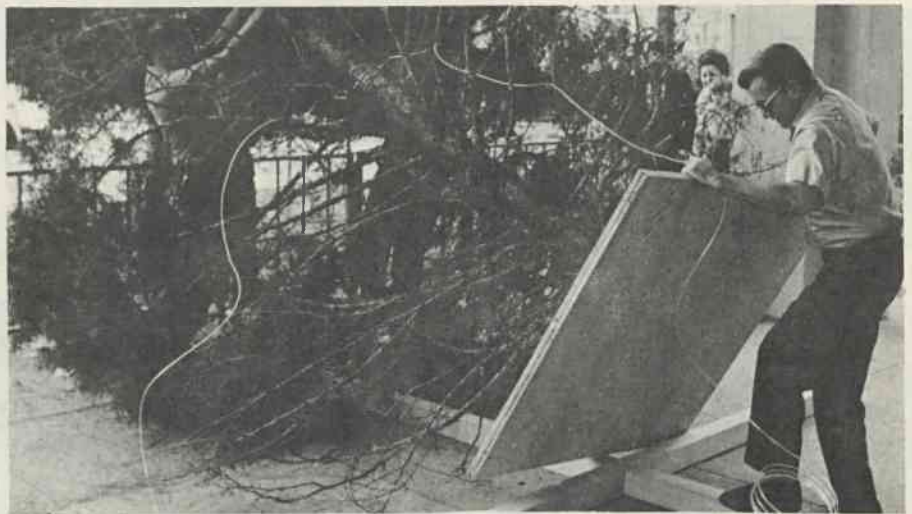


CAN YOU TELL?—This door decoration, one of many like it in the Radiology Department, at first looks like it's made of green construction paper. Look again. It's actually unexposed X-ray film. (photo by Joe Wray)



TREE WITH HEART—Personnel on the Cardiac Care Unit made their ward door decoration from electrocardiograms. (photo by Joe Wray)

Office of Public Relations
Box 3354
Duke University Medical Center
Durham, North Carolina 27710



THE TREE GOES UP—It takes several men and lots of work to put up the Medical Center Christmas tree each year. The 20-foot tree came from the Duke Forestry Department. (photo by Lewis Parrish)



CARDIOLOGY WARD—Employees on Duke's Cardiology Ward went all out for Christmas to make the holiday more enjoyable for their patients. The ward was decorated with colorful streamers, a poinsettia plant, a decorated silver Christmas tree, and even the nursing desk was wrapped up like a package. (photo by Joe Wray)