

# Leading Eye Specialists Attend Conference

More than 200 eye specialists from across the nation are attending a two-day Ophthalmology Conference at the new Eye Center.

The scientific program, which features presentations by 22 of the nation's leading ophthalmologists, is part of the three-day opening ceremony for the center.

The formal dedication was held Thursday morning in front of the Eye Center.

The scientific sessions opened today,

in the hospital amphitheater with remarks by Dr. Joseph A.C. Wadsworth, chairman of the Department of Ophthalmology, and Dr. William G. Anlyan, vice president for health affairs.

Dr. S. D. McPherson, chairman of the Department of Ophthalmology at McPherson's Hospital in Durham and clinical professor and chairman of the Department of Ophthalmology at the University of North Carolina School of Medicine in Chapel Hill, is one of the guest speakers.

Other guest speakers are Dr. Arthur H. Keeney, dean of the University of Louisville School of Medicine; Dr. Harold C. Scheie, chairman, director and professor at Scheie Eye Institute; Dr. Leonard P. Christensen, associate professor of ophthalmology at University of Oregon Medical School; Dr. Algernon B. Reese, clinical emeritus professor of ophthalmology at Columbia University College of Physicians and Surgeons.

Dr. Francis Adler, secretary-treasurer of the American Board of

Ophthalmology; Dr. William H. Spencer, medical director of the Estelle Doheney Eye Foundation and associate professor at the University of Southern California; Dr. J. Harry King, medical director of the International Eye Foundation; Dr. William P. McGuire, chief of ophthalmology and president of Winchester Memorial Hospital;

Dr. A. G. DeVoe, professor and chairman of the Department of Ophthalmology, Columbia University College of Physicians and Surgeons; Dr. Robert N. Shaffer, clinical professor of ophthalmology, University of California Medical Center; Dr. Frederick C. Blodi, chairman of the Department of Ophthalmology, University Hospitals, Iowa City; Dr. William F. Hughes, chairman of the Department of Ophthalmology, St. Luke's Hospital;

Dr. Robert P. Burns, associate professor of ophthalmology, University of Oregon Medical School; Dr. Frank W. Newell, professor and chairman, Department of Ophthalmology, Pritzker School of Medicine, University of Chicago; Dr. DuPont Guerry III, professor and chief, Department of Ophthalmology, Medical School of Virginia; Dr. Irving Leopold, professor and chairman, Department of Ophthalmology, Mt. Sinai School of Medicine;

Dr. Edward W. D. Norton, professor and chairman, Department of Ophthalmology, Bascom-Palmer Eye Institute; Dr. A. E. Maumenee, director of Wilmer Institute, Johns Hopkins Hospital; Dr. David Shoch, professor and chairman, Department of Ophthalmology, The Medical School, Northwestern University; Dr. F. Phinzy Calhoun, professor and chairman, Department of Ophthalmology, Emory University School of Medicine; and Dr. Raynold N. Berke, acting professor of ophthalmology, Stanford University Medical Center.



## Intercom duke university medical center

VOLUME 20, NUMBER 45

NOVEMBER 9, 1973

DURHAM, NORTH CAROLINA

## Dedication Ceremony, Seminar Mark Formal Opening of Duke Eye Center

Duke's new \$3.7 million Eye Center, the only facility of its kind in this section of the Southeast, was formally dedicated Thursday.

The dedication ceremonies are being followed by a two-day Ophthalmology Conference which includes talks by some of the nation's most prominent eye specialists. (See related story on this page.)

Participants in the dedication ceremony included Duke President Terry Sanford; Vice President for Health Affairs Dr. William G. Anlyan; and Department of Ophthalmology Chairman Dr. Joseph A. C. Wadsworth.

Thursday morning guided tours of the new facility were conducted for those attending the ceremony.

(For those who have not yet had a chance to see the Eye Center, another conducted tour of the new facility is scheduled at 9 a.m. next Saturday during Medical Alumni Weekend.)

The Eye Center is situated across Erwin Road from the Veterans Administration Hospital. The three-story structure includes a 43-bed inpatient unit, operating rooms, a 22,000-square-foot outpatient clinic and one complete floor of research laboratories.

Until the Duke center opened its doors to patients in August, persons suffering from serious or unusual eye diseases often had to be referred to eye centers in New York, Baltimore, Miami or more distant places because sophisticated facilities were not available in this region.

Plans for an eye center at Duke have been in the works for more than eight years. The first step came in 1965 when a separate Department of Ophthalmology was established under the direction of Wadsworth.

All of the funds for the building of the center were received from individuals, foundations and other private sources. No government funds or tax money was used.

The building was designed by Six Associates of Asheville, and is made of Duke's traditional Hillsborough stone in aggregate panels with precast concrete and steel reinforcement. The Robert H. Pinnix Co. of Gastonia was the general

contractor.

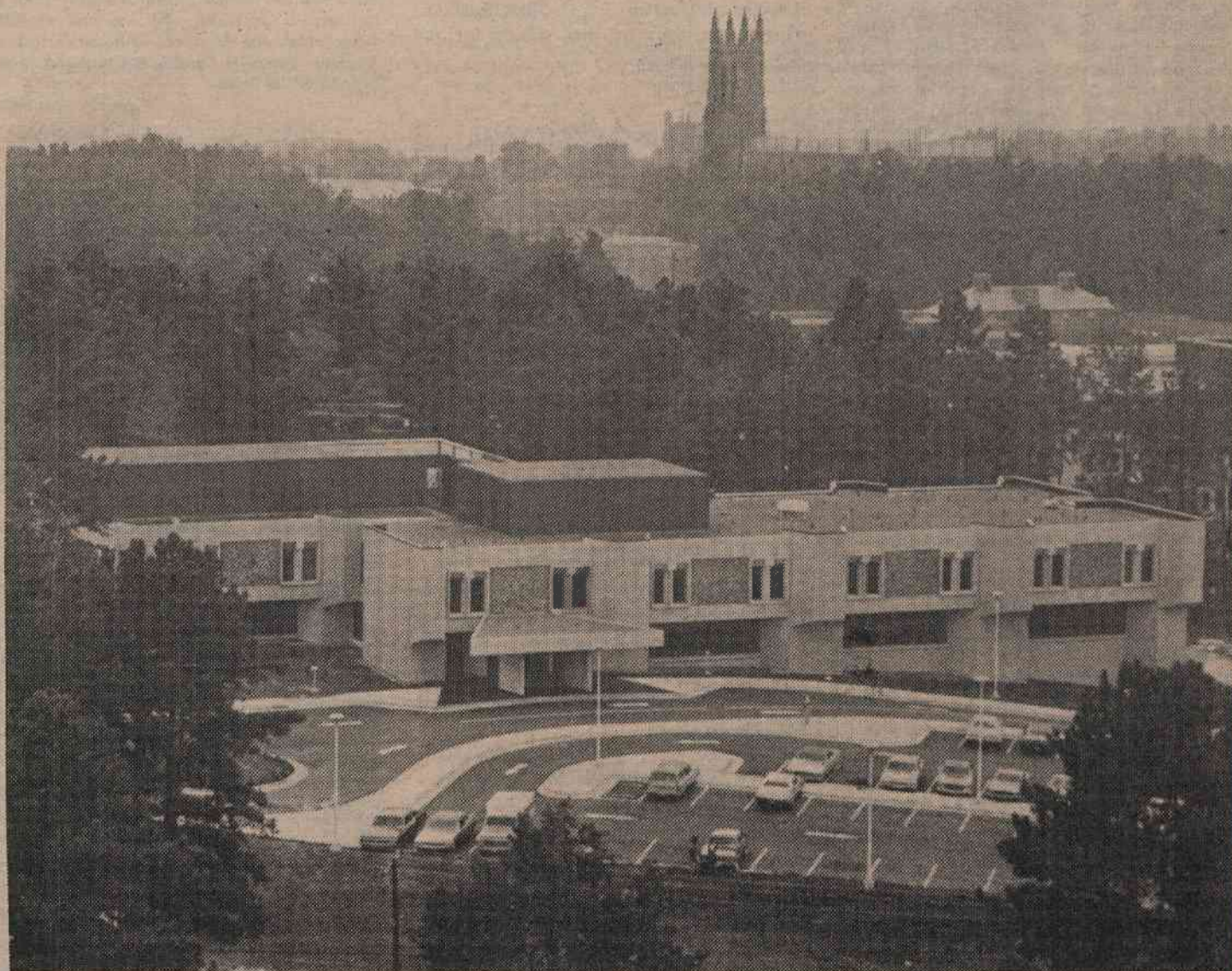
The ground floor is devoted to research laboratories and support facilities, including an electron microscope, an ophthalmologic x-ray department, a laser operating room, a photography department, conference rooms and animal care facilities.

Research carried out here will include studies on cancer of the eye, corneal transplantation and diseases that affect the retina, such as diabetes and macular degeneration.

The first floor is devoted to clinic space. It includes the outpatient clinic with examination and treatment rooms and offices for the seven staff ophthalmologists and 12 residents, as well as additional space for medical students and postdoctoral fellows.

Also on this floor is a children's clinic, which provides facilities for the examination and treatment of congenital eye defects, infantile glaucoma and inherited eye tumors. The completion of

(Continued on page 2)



**EYE CENTER DEDICATED**—This is the new \$3.7 million Duke Eye Center which was dedicated yesterday. The center, the only facility of its kind in this region, includes operating rooms, outpatient clinics, a 43-bed inpatient unit and a complete floor of research laboratories for the study of eye diseases. (Photo by Lewis Parrish)