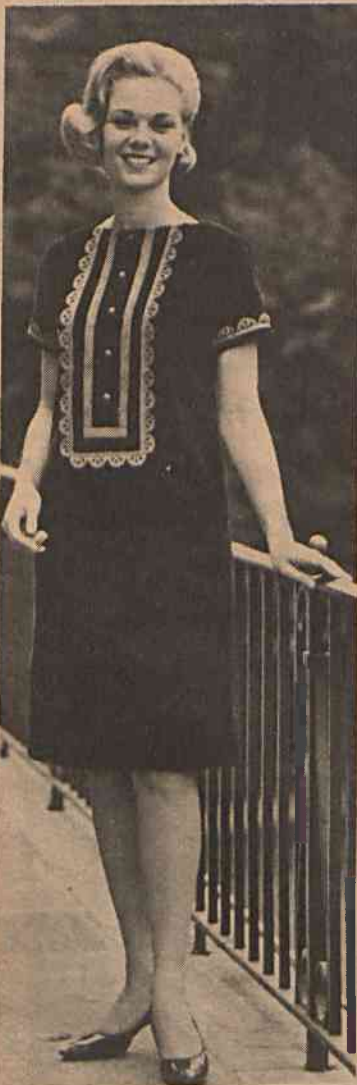


Join The Beauty Rebellion



MISS NORTH CAROLINA, Nannette Minor, wears her Cone corduroy daytime dress in amberjet with gold suede cloth trim. This is created by Scene Maker.

On November 25th, the Tabor City Jaycees will sponsor the 11th Annual Miss Columbus County Beauty Pageant, to be held in the Williams Township Audi-

torium. The contest is a preliminary Miss America Pageant and based on the rules of the Miss America Pageant.

All girls interested are urged to complete an application form and send it to the Tabor City Jaycees. These forms may be obtained in the Office of Student Personnel Services or from the Tabor City J.C.'s. Girls from outside Columbus County are eligible to compete if they are full-time students of SCC.

Scholarships this year exceed those of previous years. The total amount in scholarships to be awarded is \$850. The winner of the contest will receive the \$500 scholarship granted by Waccamaw Bank and Trust Company. A \$250 scholarship will be awarded to the first runner up and is granted by the Pepsi Cola Bottling Company of Lumberton. Leder Brothers Department Store is offering a \$100 scholarship to the second runnerup. These scholarships go into effect immediately. They can be used for second quarter at SCC, or second semester at a senior institution.

Girls interested in entering competition must be 18 years of age before September 1, 1967 and must not exceed the age limit of 27.

Competition will consist of three categories: (1) bathing suit, (2) talent, and (3) evening gown. Points scored in each of these determine the winner and runner-ups.

Nannette Minor, Miss North Carolina of 1966 will appear, as well as several former contestants of the Miss North Carolina Pageant. They will entertain during intermission. Among these will be Miss Myrtle Beach, runner up in the Miss South Carolina Pageant.

Master of Ceremonies will be Art Bannon of WWAY-TV in Wilmington.

Judges Appointed

Six judges and one chief justice were appointed by Phil Williamson, President of SGA, last week. The judges are Phil Ross, Randal Rabon, Betty Johnson, Alton Lennon, Ray Crabtree, and Jackie Hinson. The chief justice is Billy Clark.

The judges will serve during this academic year. They must maintain a minimum 2.0 overall average.

This Supreme Court shall have jurisdiction of questions arising under the student constitution, its by-laws, statutes and resolutions of the student senate. The judges will also settle disputes arising under student infraction of established regulation or standards of student conduct.

Social Security Aid To Students

Several Southeastern students may be eligible for benefits from the Social Security Act which will help them to complete their college education.

The American Legion and its Auxiliary initiated and supported legislation to extend benefits for educational opportunities through the Social Security Act for 10,900 students living in North Carolina.

These benefits are for students who continue their education on a full time basis beyond age 18. This legislation provides for the continuance of benefits while attending all schools and colleges which are public or accredited.

Students may be eligible for these benefits if their parents are receiving Social Security benefits and the student is over 18 and attending college. For further information interested persons should see their guidance counselor or contact the representative of the Social Security Officer serving their community.

Director Appointed

Southeastern Community College announces the appointment of Clifton A. McClelland as director of extension.

At Southeastern he will be working with groups to develop courses in agriculture, business, industry and other areas.

McClelland received his B. S. degree from the University of Florida and his Masters degree from Texas Technological College. He taught vocational agriculture at Central High School,

Cumberland County and served as associate professor of Air Science, Texas Technological College, Labbock, Texas. After World War II he served as training specialist with the vocational rehabilitation program of the Veterans Administration, Winston-Salem.

He recently retired from the U. S. Air Force where served as Director of Research and Development with the AF Systems Command at Electronic Systems Division, Hanscom Field, Bedford, Massachusetts and earlier at AF Eastern Test Range, Cape Kennedy, Florida.

McClelland authored several technical publications dealing with socio-economic impact of missile testing on the communities surrounding Cape Kennedy, Florida. He was a member of Governor Bryant's Committee on Community Development.

He is married to the former Kathleen Beasley of Bentonville and they have two children, Clifton Jr.--a law student at the University of Florida--and Jane, a senior at Whiteville High School.

Did You Know?

According to the files in the Student Personnel Office there are 380 full-time students enrolled at SCC. Two hundred ten of the students are boys, and 170 are girls.

Upon further investigation it was discovered that there are 220 students in the College Parallel program, 78 in the Technical program, 49 in the Vocational department, 30 in the Associate Degree Nursing Program, and 15 in the Practical Nursing program.

There are 19 men and 24 women attending the college who are married.

The following counties in North Carolina are represented in the student body: Columbus, Bladen, New Hanover, Robeson, Durham, Brunswick, Pender, Duplin, Sampson, Onslow, Pitt, Pasquotank, Cumberland, and Carteret. There are students from Horry, Dillon, Marlboro, and Marion counties in South Carolina, and from Fairfax County in Virginia.

Summer Employment

If you're interested in employment with the Federal government next summer, it's not too early to begin doing something about it.

The United States Civil Service Commission has announced that those who are interested in the summer jobs covered may apply to take the test on or before three filing dates--October 21, 1966, December 9, 1966, and January 9, 1967. The test will be given at more than 1,000 cities throughout the country on November 26, 1966, January 7, 1967, and February 4, 1967. If a candidate fails to apply by the first filing date, he may select either of the two later ones, but January 9, 1967, is the final date for applying to take the test and the closing date of the examination. Applications filed after that date cannot be accepted.

Other information can be received at your local post office or from A. E. Penney, Examiner-in-Charge, U. S. Post Office Building, Wilmington, N. C. 28401.

Our Wierdos To Be Chosen

S. G. A. will sponsor a Halloween dance on Saturday, October 22 in the college gym at 8 p. m.

The entertainment will be provided by the Wingtips from Clarkton. Since this is a Halloween dance, the S. G. A. urges the students to dress in their wierdest costumes. The highlight of the evening will be the crowning of "Male and Female Campus Wierdos," chosen by the faculty.

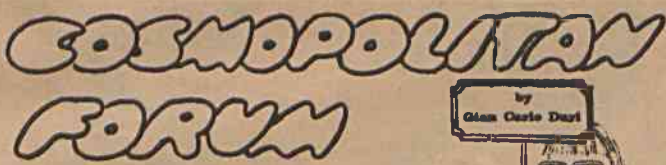
New Programs Added

Since September the following new programs have been added in the PML: Engines, Basic Electricity, Basic Electronics, Basic Transistors, Logical Electronics Troubleshooting, and The Human Body and Its Function.

For those interested, both introductory and advanced Slide Rule programs are available.

New hours for the PML are: Monday - Thursday (10:40-4:30) and (7-10 p. m.) Monday and Wednesday.

Exchange Cornor



Several people have asked me to mention the "authorities" I referred to in my previous article on LSD. Some others wanted to know more about that "special brain chemistry" of the LSD experience. Consequently, here I am committing another sin of plagiarism by giving you almost the original text of my main source of information.

This source is an article titled "LSD and the Third Eye," by John N. Bleitbreu, published in *The Atlantic* magazine. It concerns the scientific uses of LSD and the drug's role in special states of mind.

Bleitbreu explains that the class of drugs to which LSD belongs was at first called psychotomimetic (meaning imitative of psychosis), later hallucigenic, and lastly psychedelic (or mind manifesting). These changes in name would suggest the past confusion as to the significance of LSD drugs.

Some confusion is still present, nowadays, with respect to what really happens in the brain when psychedelic drugs are taken. Intensive research is being done in this area of study.

Let's begin by defining LSD. It is a relatively simple chemical compound, lysergic acid diethylamide. It is easily synthesized from lysergic acid which comes from a parasitic fungus that grows on rye heads.

Usually a 75 microgram dose of LSD is enough to make the subject fly, but 150 mcg doses are more commonly used by the veterans. A dose of 2,000 micrograms is strong enough to permit interesting research in the area of extrasensory perceptions.

It is with a high dose that an LSDer can experience the "aura" state which I described with Dostoevsky's words in my last article. But, let's not talk again about mysticism.

In a paper published in 1953, Dr. E. J. Gaddum, a professor of pharmacology at the University of Edinburgh, pointed out that LSD-25 was a potent antagonist to serotonin which in turn was connected to special mental states of being. This intriguing relationship stimulated further research, and in 1958 a Yale Medical School professor of dermatology named Aaron Lerner published a paper on the pineal gland which placed serotonin in some vague kind of historical perspective (related to melatonin) and provided for it a real functional role in the brains of mammals.

Other researchers, the biochemist Julius Axelrod and others, found that melatonin was instrumental in suppressing physiological sexuality in mammals.

Thus we see that two curious functions have been attributed to the pineal gland: the production of a chemical which suppresses functional sexuality; and, the production of a chemical which, indirectly at least, is associated with psychedelic states.

A third factor was discovered by Axelrod and his co-workers. The pineal gland produces its chemicals according to a regular oscillating beat, somehow related to light conditions. The evidence is still not conclusive, but it seems that light does penetrate the frontal bone and brain to reach the pineal in significant amount. Hence, the relationship between the pineal gland and the Third Eye.

The Third Eye, the inner eye or the eye of the mind, is a concept found in the Hindu culture and particularly related to the *Sahasrara* state of *Kundilini* Yoga. When this eye is "opened" a new and completely foreign dimension of reality is revealed to the practitioner of Yoga--the descriptions of which coincide with those of the mystics and LSD users.

Concluding, I start my last and longest paraphrase. Strong suspicion has fallen now on serotonin as being one of the principle agents of the psychedelic experience, but whatever its role, it is certain that other neurohumors are additionally involved in the chemical transactions which produce the state. It is likely that LSD itself produces certain effects quite on its own.

Studies made with tracer elements and the electron microscope now reveal that LSD strikes like a chemical guerilla, entering swiftly into receptor granules in brain cells and then leaving swiftly after a very short time, perhaps ten or twenty minutes (in animals).

This initial period coincides with the onset of the most violent symptoms of the LSD state as it is observed in test animals. But, when the twenty minutes are done, and the bulk of the LSD has left the receptor granules, it is replaced by what seems to be excessive, or supernormal, amounts of serotonin. Since the LSD state lasts for some ten hours, and during this time serotonin can be measured (by autopsy) in supernormal amounts in receptor granules, it must be considered one of the important participants of that chemical transaction which produces the state.

The use of LSD in exploring strange dislocated states of mind is most convenient because the effects are invariably reliable, and within certain limits quite predictable.

LSD is one of the keys in studying our own minds. Fasting as a mean of altering body chemistry and so producing this kind of psychedelic state is effective too, but only among those who are marginally nourished in the first place. Sensory deprivation is another effective method of reaching the psychedelic, or better, the *sahasrara* state. This state can be obtained by thinking away all thoughts until only pure consciousness is left--that which cannot be thought away.

In my own words, I would suggest the following natural method of recollection. Consider your mind to be a room filled up with ideas. Take out all the ideas. The empty room is left alone. Perceive the room. Perceive your own mind, yourself. It is like listening when all is silent.

Shop With Confidence
At
Leder Brothers
Wear With Pride