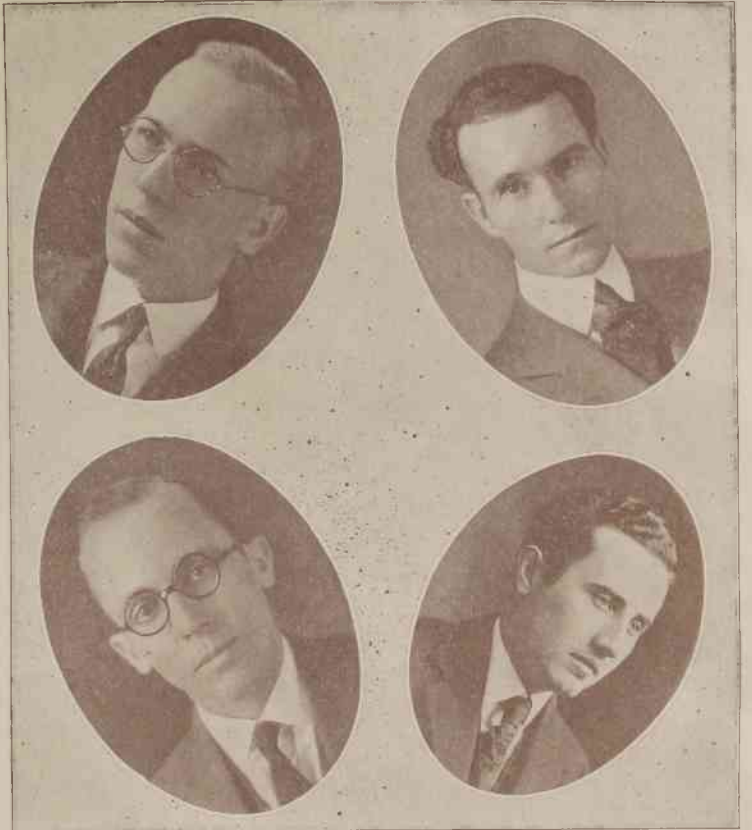




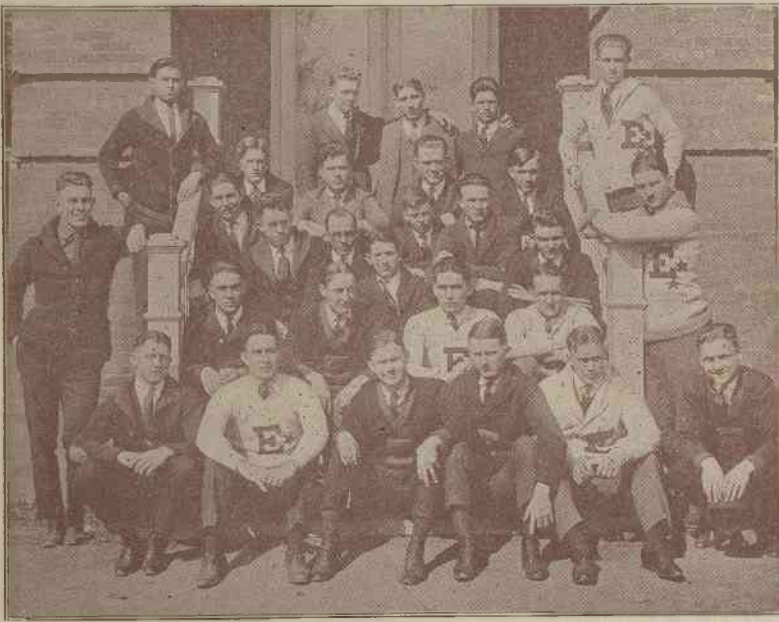
BASKETBALL SQUAD



J. B. NEWMAN,  
Captain of Baseball 1922



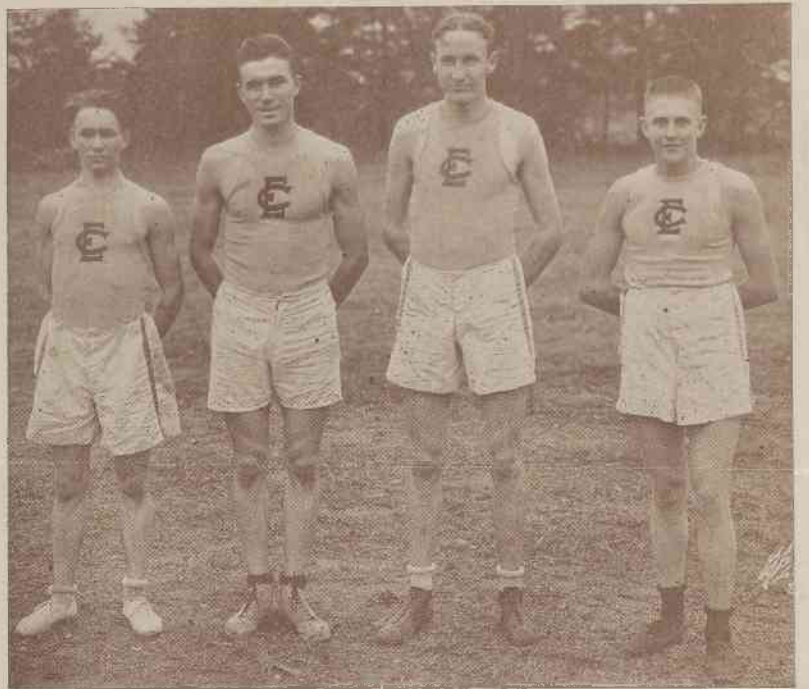
ELON-GUILFORD DEBATERS  
(Upper) W. T. Scott, R. S. Helms. (Lower) R. O. Smith, H. L. Scott.



"E" MEN



E. S. JOHNSON,  
Captain of Football  
1922



Brannock Hainer Marlette (All-State) Scholz  
CROSS COUNTRY TEAM



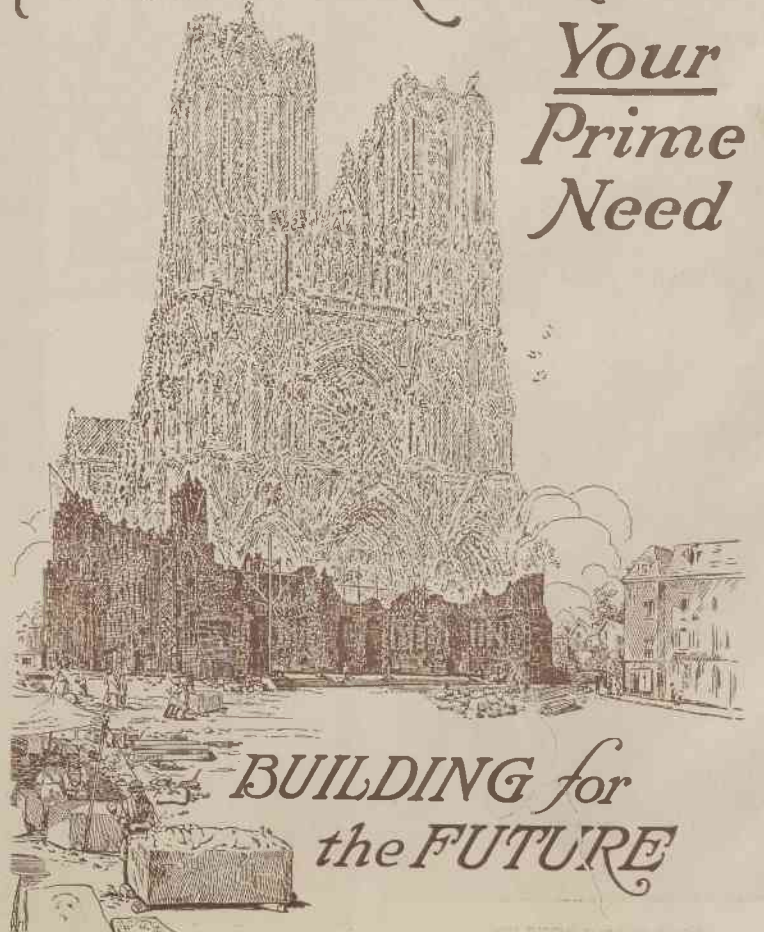
HOUSEHOLD ARTS CLASS



CAMPUS SCENES

*A LIFE PROGRAM*

*Your  
Prime  
Need*



A COLLEGE EDUCATION SUPPLIES THIS NEED