

Elon Goes Down In Defeat Before Clemson Tigers In Game Played At Clemson

FIGHTS HARD

But is Unable to Score Against Superior Playing of South Carolinians. Game Ends 60 to 0.

PLAYED ON MUDDY FIELD

Harrell, Whitsell, and Beougher are Mentioned for Consistent Playing. Clemson Gets Long Runs.

The Clemson Tigers in the first battle of the football season Saturday completely smothered the Elon College eleven and piled up a score of 60 to 0. The game was played under the most adverse weather conditions in spite of which fact a fairly large crowd of spectators occupied the stands. Rain fell all during the game, and at times a veritable downpour threatened.

The Clemson team showed a smooth and powerful attack, well balanced and thoroughly consistent. They ran end, smashed at the line and slid off tackles with almost equal regularity and effectiveness. A majority of the ground gained was by wide sweeping and runs with Charlie Robinson or Pat Harmon carrying the ball.

The Elon team put up a plucky fight against overwhelming odds and be it said to their everlasting credit that at the final whistle, they were scrapping for dear life and bitterly contesting every inch of ground that Clemson gained. Only one forward pass was completed during the game, that by Elon for no gain. Elon failed to make a first down.

Clemson ran up 27 points in quick succession in the first quarter. Elon kicked off to Clemson to open the hostilities. Robinson and Harmon alternating at running the ends, placed the ball on Elon's ten yard line in five plays, and Harmon stepped off the remaining distance at left end in one try. After an exchange of punts, Clemson recovered an Elon fumble in shadow of the North Carolinian's goal and Bratton Williams smashed over for the touchdown. They swapped punts, Clemson recovering another fumble. Clemson drew a 15 yard penalty and Charlie Robinson dropped back for a forward pass. Finding his men all covered, the flashy Clemson captain reeled off 35 yards around right end and it was the work of an instant for Pat Harmon to measure the remaining distance.

Elon kicked off to Clemson's fifteen yard line, and Pat Harmon scooped up the ball, running, twisting and squirming his way through the entire Elon team for a fourth touchdown. Shortly after this play Charlie Robinson broke

(Continued on Page Four)

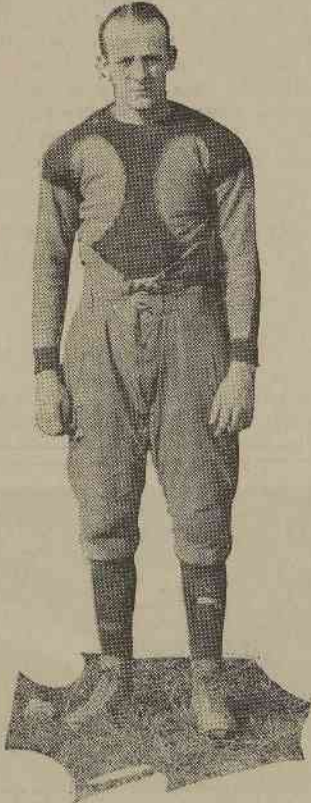
STUDENTS, ATTENTION! GAME HERE SATURDAY

The Elon-Lynchburg game will be played on Comer Field here Saturday. Why not start talking about it now. Get the ole' pep and keep it until the game and then go out and show the team you are with them. This will be a hard game, but the team is going to fight and the students can help by being out there and yelling.

If you do not know the songs and yells get out the "Red Book" and learn them. You will need to know them for the basketball and baseball season. Why not learn them now?

Let's boost our teams and get the Elon spirit behind them.

D. L. HARRELL



"Lem" as he is popularly known, is palyng half back for the Maroon and Gold team. He is a good man in this position and is calling signals for his team.

DR. SUMMERBELL HOLDS AUDIENCE BY LECTURES DELIVERED THIS WEEK

Speaks on General Theme "Europe in Transition" and Delivers Three Lectures. Preaches At Sunday Morning Service.

LARGE NUMBERS ATTEND

Dr. Martyn Summerbell, president of Starkey Seminary, Lakemont, N. Y., non-resident lecturer of Elon College as well as many other colleges, delivered a series of lectures here this week.

His general theme for this series was "Europe in Transition." His three lectures relating to this general theme were: "The Dark Age," "The Middle Age and Feudalism," and "The Rise and Influence of Chivalry."

Dr. Summerbell delivered his lectures at 9:00 a. m. Monday, 2:00 p. m. Monday and 9:00 a. m. Tuesday. At the

(Continued on Page Two)

MISSES ATKINSON AND CAVENESS ENTERTAIN

Misses Alberta Atkinson and Louise Caveness entertained a number of their friends in the room of Misses Atkinson and Pitt from 9:30 to 11:00 o'clock on Monday evening. The room was decorated with potted plants and a very tempting supper was served. The supper consisted of soup, sandwiches, fruit salad, fried chicken, pickles, rolls, hot chocolate and apple pie with whipped cream.

The group was entertained by jokes told by Miss Bernice Hartman. The evening was enjoyed by all present.

PSYKALEONS RECEIVE TWENTY-FOUR MEMBERS INTO RANKS MONDAY

Society is Enthusiastic at Prospects of Year's Work. Good Speeches for New Members.

TWO HONORARY MEMBERS

The Psykaleon Literary Society, meeting in regular session on Monday night, increased its membership by the substantial addition of twenty-four new members.

The society hall looked its best and most impressive for the ceremony of initiation, the society colors of green and gold striking a dominant note.

Preceding the initiatory service routine business was disposed of.

The new members, and the excellent and unusually enthusiastic spirit they showed, were an inspiration to the society and foretell even better work this year than last. They seemed to grasp and assimilate immediately the spirit of Psykaleon, and to give the old members a new force and vigor in their work. Great things are to be expected from this group of exceptionally intelligent and talented new girls. This, added to the experience and capabilities of the old members, gives bright prospects for the Psykaleon Society in the coming session.

Among other items, words of welcome were spoken by several of the old members among which the speech of Miss Harrell, the president, was exceptionally fine.

The honorary members, Misses Savage, Scully, and Nelson, were present. Miss Scully and Miss Nelson were received into the society at this time, this being their first visit.

The new members are as follows:

Alberta Atkinson, Mabel Alexander, Bernice Hartman, Louise Caveness, Rosebud Kimball, Ruth Kimball, Susie Elder, Emily Midgett, Marie Hale, Maude Hale, Carrie Bell Kernodle, Hannah Clair Newman, Emma Morgan, Anna Phillips, Mary Jane Garner, Frances Jones, Thyra Wright, Alice Baldwin, Lillian Cooper, Wilson Gatewood, Adah McIntyre, Elsie Jones, Flea Summers, Hattie Mae Pitt.

CARLTON LIBRARY BUILDING PRESENTED HERE SATURDAY

P. J. Carlton, Herbert Carlton, Luther Carlton, and Mrs. T. E. Parrot Donors of Building are Present.

DR. L. R. WILSON SPEAKS

Dr. J. W. Wellons, Life Long Friend of Carlton Family, Speaks. Other Prominent Men Appear on the Program.

The Carlton Library Building, representing a total gift of \$100,000.00 to Elon College from the Carlton family, was formally dedicated Saturday morning at 11:30 by appropriate exercises in the college auditorium, Dr. Louis R. Wilson, librarian of the University of North Carolina, delivering the principal address of the occasion.

The donors of this building, P. J. Carlton, Richmond; Herbert Carlton, Raleigh; Luther Carlton, Kinston, and Mrs. T. E. Parrot, Newman, Ga., were present at the dedication.

An appreciative audience was present for this exercise. The faculty and student body of the college attended as a whole and many of the friends of the community and county showed their appreciation of the donors and the college by their presence.

The exercises were begun with a

W. B. TERRELL WINNER IN SLOGAN CONTEST

The slogan contest which was conducted by the Phippsli was won by W. B. Terrell.

A week ago the Phippsli staff announced that the student submitting the best slogan to use for the book would get his picture made free of charge for the annual.

The slogan which won was, "Take Elon Home With You In The Phippsli." York Brannock won special mention with his slogan "The Book With the Elon Spirit."

FOUR NEW MEMBERS ADDED TO PHILOLOGIANS

This Number Gives the Society Thirty New Men From the Students This Year. New Men Speak.

The Philologian Literary Society met last Thursday night in regular session. A brief business session was held after which the initiation of the new men claimed the attention of the Society.

Following the initiation the new men were called upon for speeches. As they responded to this call the Society had a chance to witness the action of men under fire. They showed up well. Many splendid talks were made by the new Philologians. They showed a willingness to enter into the work of the Society and manifested a good spirit.

The Society feels more than ever that the year's work ahead will be the greatest in its history. Every member has pledged himself to work toward that end.

Plans for the annual Thanksgiving program are moving along nicely. The Society hopes to present an entertainment that will compare well with those that have been given in the past.

The regular weekly programs will begin Thursday night.

The program will contain many things of interest to the members and promises to be a good one.

Four new men were added to the twenty-six taken in last week, bringing the total of new men to thirty. The following men were received: A. J. Strum, W. J. Vanhook, Roxboro, N. C.; D. M. Spence, Lillington, N. C.; E. W. McCauley, Union Ridge, N. C.

THIRTY-TWO GIRLS ARE ADDED TO PSIPHILIAN SOCIETY FRIDAY NIGHT

Good Program Given in Regular Meeting Wednesday Night. Misses Sockwell, Paschall and Walker Mentioned.

PLANNING A GOOD YEAR

The Psiphelian Literary Society met last Wednesday for the last time before the new members were taken in. After the business session was over the following program was rendered.

Synopsis of "Laddie" by Mrs. Porter, by Bess Walker. This interesting novel was told in such a manner that those society members who had never read the book felt familiar with all leading characters. Miss Walker has the pleasing ability to give details and also make a story interesting.

Piano Solo "Twilight" by Kathleen Paschall. This quaint melody was sweetly played as befits a solo of this type.

Humor—Lyde Bingham.

Miss Bingham gave a variety of jokes and made them more acceptable by a personal touch.

Reading, "Baby's First Tooth," Mamie Sockwell. Miss Sockwell has had careful training. She gave her reading in such a way that the audience could visualize the proud father and mother perfectly. It was humorous.

Happiness, Big and Little—Margaret Rowland. This essay was good, pointing out how we often overlook little things that bring true happiness while we look for one crowning happiness.

Three best on program were Misses Sockwell, Paschall and Walker.

Friday night at a call meeting thirty-two girls were taken into the Psiphelian Society. The Society is proud to have these girls become members and feels sure that this will be the best year it has experienced. The new members are as follows:

Mae Oliver, Sanford, N. C.; Kathryn Roney, Rocky Mount, N. C.; Ida Lewis Capps, Sanford, N. C.; Nannie Lou Aldridge, Union Ridge, N. C.; Esther Brookshire, Randleman, N. C.; Jewel Hughes, Randleman, N. C.; Elizabeth Hall, Parkton, N. C.; Alice Watson, Burlington, N. C.; Margaret Grissom, Henderson, N. C.; Rosa Paschal, Ridge-way, N. C.; Sallie Kate Ingram, Ingram, N. C.; Ruby Braxton, Saxapahaw, N. C.; Hazel Auman, Seagrove, N. C.; Ruth Suemall Aleon, Reidsville, N. C.; Ruth Lyerly, Salisbury, N. C.; Mabel Michael, McLeansville, N. C.; Lena Russell, Seagrove, N. C.; Annie June Hornaday, Elon College, N. C.; Bessie Mae Connor, Clayton, N. C.; Willie Mae Paschall, Altamahaw, N. C.; Minnie Johnston, Elon College, N. C.; Veva Foster, Wilkesboro, N. C. (*); Mary Tome Hughes, (Continued on Page Three)

PI KAPPA TAU ENJOYS A DELIGHTFUL PICNIC

The Pi Kappa Tau members who returned to school this year enjoyed a very delightful picnic last Tuesday afternoon. They left the campus at 4:30 p. m. and returned in time for the ringing of the campus bell. The girls went over into a meadow, made a fire and had a great deal of fun roasting weinies, toasting marshmallows and eating the many good things which they had carried. A great part of the time was spent in playing games, after which they started on the walk back, singing songs and giving yells.

Those who enjoyed the picnic were, Misses Annie Mae Lackey, Sallie Mae Oliver, Lyde Bingham, Jewell Hughes, Thelma Taylor and Bess Walker.

(Continued on Page Three)