

THE MAROON and GOLD

ELON COLLEGE

Elon College, North Carolina

STAFF

BILL COOPER Editor-in-Chief
 EDYTHE ERNST Co-Editor

EDITORIAL STAFF

PAIGE HOLDER Managing Editor
 ELMINA RHODES } Assistant Manager Editors
 SUE GALLOWAY }
 JOHN COLLYER Sports Editor
 GRETCHEN SEDBERRY Social Editor
 DOLLY SLEDGE Co-Ed Editor
 MONARD DOWDES } Joke Editors
 L. E. SMITH, JR. }

BUSINESS STAFF

DR. H. L. SNUGGS Faculty Advisor

REPORTERS

OLIVER COOK EMMANUEL HELGEBETH
 ESTHER HOPPENSTEADT JORDAN SLOAN
 HATCHER STORY BEN HELLER
 PEARL P. PARIS MARION BOYCE

TYPISTS

MARCELLA ACKENHAUSEN, LAURA MAE HOLT, ESTHER COLE

SUBSCRIPTION \$1.00 PER YEAR

Entered as second-class matter January 1, 1936 at the post office at
 Elon College, N. C., under Act of March 3, 1879.

SATURDAY, FEBRUARY 29, 1936

COMMENDATION

All due credit and praise should be given to our dietician for the splendid work she has done in managing the dining hall this year. Coming to a place which was entirely new to her and finding it necessary to become adapted to the situation confronting her, she has undertaken her job with an enthusiasm which is commendable.

Through her ceaseless and untiring effort, the dining hall has become a much smoother and more efficient unit in our institution. Of course, there are times when things go wrong, but one will always encounter such obstacles unless he can discover Utopia, in which all things have attained a degree of complete perfection. So when something goes amiss in the dining hall, one should not immediately place all of the blame upon the dietician, but he should try to see wherein the fault lies and do his best to help remedy the situation.

Many new and very useful things have been secured for the dining hall and kitchen through the dietician's desire to better the place, and most of these innovations have been to the students' advantage.

So, let's all give our dietician a big hand and cooperate with her to the best of our ability.

In the November 15, 1935 issue of Social Action, a magazine published by the Council for Social Action of the Congregational and Christian Churches, is set forth in seventeen points the social ideals of the churches. These ideals, having to do with the acquisition of wealth, equal justice to all, the repudiation of war, the abolition of child labor, and many other equally high aims, are expressed in liberal terms and are in keeping with the problems that face our social order today.

But the mere exposition of such aims is not enough, even the adoption of these aims by leaders in the churches is inadequate for their full realization. It will take the cooperation of every man and woman to make these ideals actualities.

And it falls especially on us who attend a church, supported college and who will be leaders in our own communities to take up the burden which the statement of these social ideals lays on our shoulders. If we remain apathetic and insensitive to the challenge which is rightly ours and which has been given us, who will take up the challenge?

The epidemic of influenza on the campus although slight, has been a problem. The nurse and dietician have certainly been kind, thoughtful, and efficient in their care of the sick. The students probably do not realize the extent of trouble in preparing trays and in administering to those who have been sick. No one has lacked attention or proper food and the epidemic has, therefore not become serious or very widespread.

The room-mates of the persons who have the "flu" have also shown a cooperative spirit in assisting the nurse and dietician. Further cooperation is solicited and will be appreciated.

Everyone is cautioned to be especially careful of their health during the epidemic. There has been a warning against unnecessary contact with anyone who has the flu. Students should realize the seriousness of a bad flu epidemic, and heed this warning. They should report any illness immediately to the nurse and thus receive the proper treatment.

Again gratitude is extended to the college nurse and dietician for their efficient and patient care.

WHO'S WHO

--ON-- OUR CAMPUS



CHARLIE HOLMES

The members of the Senior Class are proud to have as their president, Charlie Holmes. Charlie is a typical Elon Spirit. His ready smile and cheery greetings to everyone makes you feel at ease when you are talking to him.

Charlie was born in Bloomfield New Jersey, February 7th, 1913. A few years later he moved to Caldwell, New Jersey where he now resides. He is 5 feet, seven inches tall, blue eyes and light hair. He graduated from Caldwell High School in 1932. The following year he entered Elon College which he has made his home for the past four years.

His favorite hobby is music. His favorite orchestra is Glenn Gray and his favorite piece of music is Rhapsody in Blue.

Charlie's ambition is to be a successful insurance man or a newspaper man.

His favorite position is stay in

As A Knave Sees It

A sudden, unexpected touch of spring like the one experienced this past week makes you feel as if you will never be the same. You feel all cozy and warm inside and even history lectures seem to be shorter. The rich warm

Ladies Hall. Favorite sport is swimming and street fights.

During Charlie's college life at Elon for the past four long years he has made for himself many friends, it is with much regret that he leaves this campus in May. During his Freshman year he was sports reporter with his old lady, Tank Nelson. During his Junior year he served his class as vice-president and as a member of the Pan-Hellenic Council. Now he is serving his class for the last time in the capacity of president. He is a member of the boxing team. Charlie claims that since he has been successful in winning his fights, he will turn back to street fights again.

odor of the earth makes you want to do things only squirrels were prepared by nature to do—such as climb trees and sit on a limb and stare wild-eyed at God's world. Oh! it's good to be alive even with a sissy conscience like mine.

I wonder if other people spend years creating a hard shell of indifference about them and then spend what is left in trying to get rid of it. It helps in small matters but in big things I believe it hinders. Deliberately cultivating indifference is evidence there's weakness in one's make-up. Am I right or do I know what I'm talking about?

A good paragraph I came across in Josephine Johnson's first novel, "Now in November:" "To trust so much in anything—

(Continued On Last Page.)

Attention College Students!

WE CARRY A COMPLETE LINE OF TENNIS RACKETS, FRAMES, BALLS, SHOES, ARCH BUILT CUSHIONED SOLES, TENNIS SHORTS AND POLO SHIRTS FOR BOTH BOYS AND GIRLS.

John, Vernon, "The Ole Reliable" does our restringing of Tennis Rackets.

HOOD'S SPORT SHOP

108 West Davis Street
Burlington, N. C.

Let Us Fill Your Coal Orders

Red Ash Coal, \$7.50 per ton delivered

Orders filled Promptly

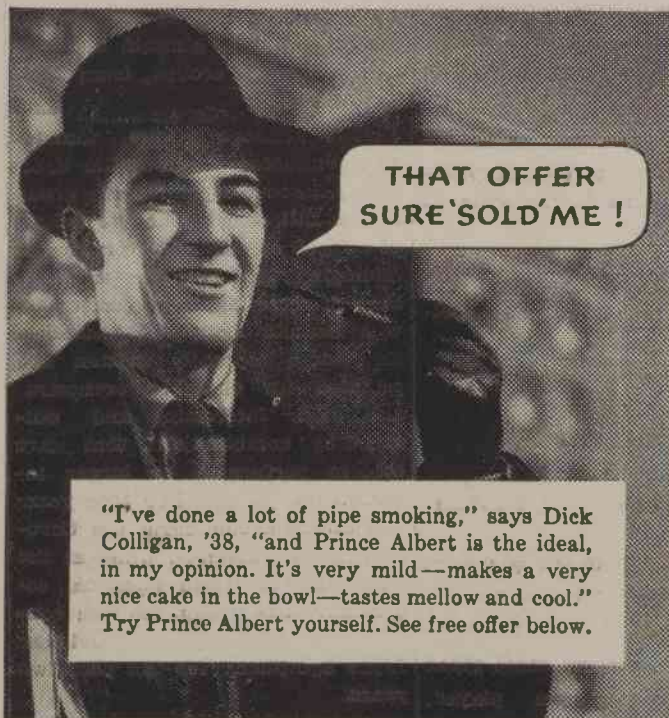
Our Coal Makes Warm Friends

Gibsonville Development Company

GIBSONVILLE, N. C.

P. L. Kivette, Mgr.

Pipe smokers glad they tried P. A. on Money-Back offer!



THAT OFFER SURE SOLD ME!

"I've done a lot of pipe smoking," says Dick Colligan, '38, "and Prince Albert is the ideal, in my opinion. It's very mild—makes a very nice cake in the bowl—tastes mellow and cool." Try Prince Albert yourself. See free offer below.



FROM NOW ON PRINCE ALBERT IS MY ONE-AND-ONLY

"I've never found Prince Albert's equal for taste. And I get around fifty pipefuls out of every big two-ounce tin," says George Beekman, '36.

PRINCE ALBERT RATES FIRST ON MILDNESS AND FLAVOR

"P. A. is the answer to this pipe-smoking business," says Donald LaCasse, '39.

TRY 20 PIPEFULS AT OUR RISK

Smoke 20 fragrant pipefuls of Prince Albert. If you don't find it the mellowest, tastiest pipe tobacco you ever smoked, return the pocket tin with the rest of the tobacco in it to us at any time within a month from this date, and we will refund full purchase price, plus postage. (Signed) R. J. Reynolds Tobacco Company, Winston-Salem, N. C.

PRINCE ALBERT THE NATIONAL JOY SMOKE



50 pipefuls of fragrant tobacco in every 2-ounce tin of Prince Albert