

CHRISTIANS SCALP INDIANS OVER YONDER, 7 - 0

Guest Column



By Dr. L. C. Dickinson

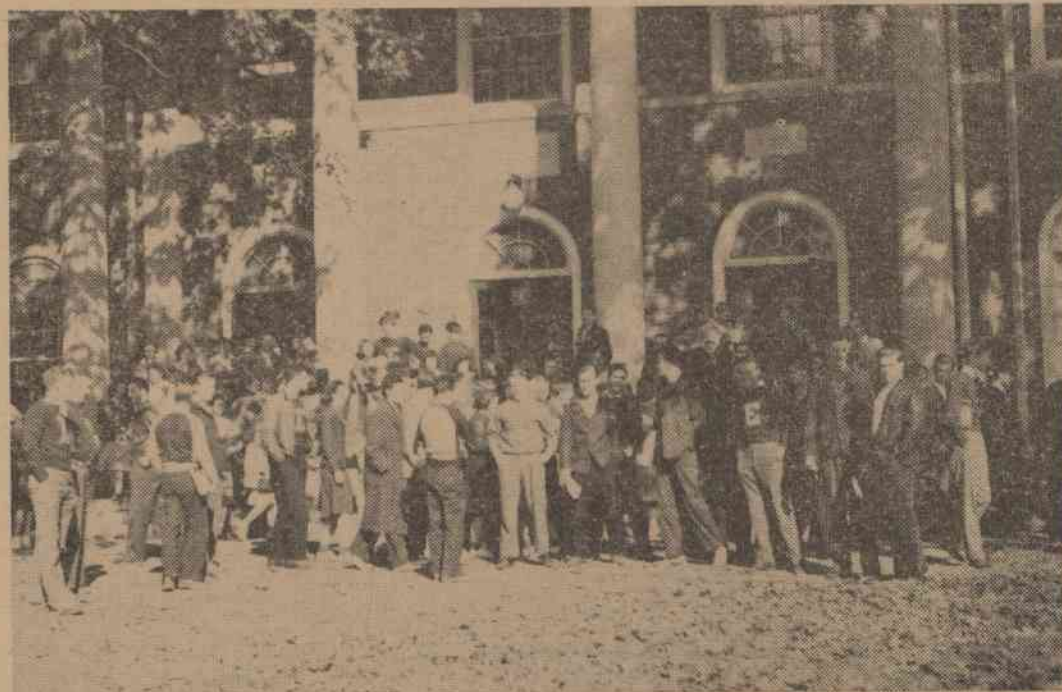
Generally speaking a guest columnist at Elon receiving the editorial command to "compose a few paragraphs upon any topic" would find himself in somewhat of a dilemma and would be compelled to spend some time in the selection of the very best possible subject. Such is not the case however at this time to one who has come to love and esteem Elon very greatly and who holds her interests to be of prime importance. To such a person what other topic to speak, talk or write about could present itself outside of the subject of dear old Elon herself?

This is a most important year in the history of the school. In addition to suitably celebrating the Fiftieth Anniversary of its founding the guiding spirits are also making valiant efforts to wipe out a long standing debt under which the institution has labored for some time. To do this the immediate community has once again been called upon to help. From some sources one hears the remark that Elon expects an awful lot from its neighbors. We wonder if its position in the community is not of sufficient importance to warrant the demands which it is making?

Elon College is rapidly becoming a far flung organization and there are probably few even within the school itself who realize the extent of its activities or the size of its physical plant. We cover much territory and have many diversified interests and are constantly looking forward to more. Our faculty is increasing in size and prestige every year and its members hale from the North, South, Middle West and even from Europe. Our student body is, as everyone knows, rapidly increasing in number and becoming more cosmopolitan in character as the years go by although the majority of the group come naturally from Alamance County. Thus when we talk about the obligations and demands of Elon upon the community we must first of all realize how many members of the community are a part of Elon.

The location of an educational institution in a metropolitan area such as Burlington provides an unusual opportunity for the students in that area to obtain a college education at extremely low cost. And we mean a real college education. Such common wise cracks of Burlington origin to the effect that "if you can't go to college go to Elon" are beneath out contempt and will disappear before the onslaughts of

(Continued on page 6)



CHAPEL

Shown above are some of the students, who have just been to chapel and were snapped by the photographer (Moses Crutchfield) as they were coming from the assembly and going to their classes. The most impressive thing about the picture is the fact that so many of the football players attended and of all the people to sit and listen to a speaker in addition to the members of the football squad, if you will observe close, are Frank Barnett and J. C. Hogjaw McCotter.

Look real close and see if you can find you: smiling face here, if not better luck next time.

A "COMMUNITY SING" FOR ELON

Why not a "Community Sing" for Elon College? Evening's entertainment of this kind has proven highly successful in the case of Duke University and could certainly go over big here.

Many of our students go to Burlington, Greensboro and elsewhere on Sunday evenings and the campus has a deserted appearance. To a great number of Elonites, Sunday is just another day to be endured, empty afternoon and evening. A "Community Sing" could remedy this in that it would give everyone something to look forward to. These singing get-togethers could be held Sunday evenings in the Little Chapel from 7:30 until 8:00. The words to the songs could be thrown on a screen, enabling those unfamiliar with the words to sing right along with the others.

Of course, the songs would need not be of a solely religious nature, but could include old folk songs such as "When You and I Were Young Maggie"; spirituals such as "Old Black Joe"; and other favorites, both old and new. Nor would the entire evenings entertainment have to be taken up with group singing, but could include quartets, solos and perhaps instrumental music.

The program could be taken care of by various organizations on the campus, much in the same way Student Chapels are taken care of.

Most of you probably recall the successful "Community Sing" held several years ago over the radio, under the sponsorship of the Gillette Razor Co. Of necessity, Elon's would not be that large, but it could certainly make up in spirit what it would be at a loss for in numbers. Our campus is full of good singers, so let's all chip in and "Let's All Sing Like the Birdies Sing."

MRS. NEWMAN, SECRETARY TO MR. WEST, RESIGNS

Mrs. Ann Newman, who has been secretary to the business manager of the College, recently resigned her job. She has held this job for the past four years, and it was with much regret that her resignation was received. Her place has been taken by Mrs. E. B. Huffines of Elon College.

NATIONAL COLLEGE POLL RESULTS (in Percentages)

This first group of returns has come from widely diversified colleges in every section of the United States. The votes are represented of 100,000 American college students — students in men's, women's, co-educational, agricultural, religious, military schools, etc., an accurate cross section of the entire college population of the United States.

1. Under present conditions should the United States enter the European war as an active fighting agent?

Male — Yes 3.4; No 96.6; Female — Yes 1.4; No 98.6; Total — Yes 2.9; No 97.1

2. If Germany is defeated in the war, do you think the spread of the totalitarian form of government will be prevented?

Male — Yes 40; No 60; Female — Yes 45; No 55;

3. Under present conditions, should the United States sell munitions on a cash basis to any belligerent nations who can call for the items in their own ships?

Male — Yes 61; No 39; Female — Yes 50; No 50;

4. Do you favor increase armaments and extension of armed forces in the United States at the present time?

Male — Yes 74; No 26; Female — Yes 72; No 28;

5. Would you be willing to fight if:

A. The United States proper were attacked? Male — Yes 94; No 65; Female — Yes 86; No 14;

B. Any United States territorial possessions were attacked? Male — Yes 73; No 27; Female — Yes 59; No 41;

C. Any country in the western hemisphere were attacked? Male — Yes 44; No 56; Female — Yes 36; No 64;

D. United States maritime rights were violated: i. e. if American ships were sunk with American passengers aboard? Male — Yes 33; No 67; Female — Yes 27; No 63;

E. It became apparent that France and England were in danger of defeat? Male — Yes 30; No 70; Female — Yes 36; No 64.

Editor's Note: Students on the Elon campus voted as a whole within a few points of the national tabulation.

Field Secretary Moves Into New Residence

On Wednesday, November 1, 1939, Mr. George Colclough, Elon's field secretary, moved his family into a recently constructed two-story white-brick veneer house. The house was started last summer with George Howe Foxworth, architect. There are seven

Pittman Scores After Laws Recovers Fumble On 20 Yd. Line

SOPHOMORE STAR



Pictured above is Jack Boone, triple threat back for the Christians, whose play has been outstanding this season. The Portsmouth, Virginia star's punting has been an asset, along with his great defensive work.

"In Dixon's Kitchen" Presented By Elon College Players

The first play on the campus this fall was presented last Monday and Tuesday evenings in the Little Chapel. Later by the class in Drama Literature, one unit of the Elon College Players. It was given to the dramatics organization's contribution to the weekly student chapel programs. The play, "In Dixon's Kitchen," is a Carolina Folk comedy, written by Wilbur Stout and was first presented at the University of North Carolina some years ago. The characters were: Ma Dixon, Florine Ray; Pa Dixon, Garland Causey; Janie Dixon, their youngest daughter, Mary Pritchett; Annie Lee Dixon, oldest daughter, Ann Eshelman; Gilmer Dixon, their son, Claude Lawrence; and Lew White, Annie Lee's boy friend, Dwight Gentry.

The production staff were Mrs. Robbie Screen, Marjorie Hunter, Charles Walters, and Joe Golombek. Dr. Fletcher Collins, teacher of the class, directed the play.

Dr. Holland Holton Of Duke Is Heard By Education Club

Dr. Holland Holton, head of the department of education of Duke University, spoke to the Education Club Wednesday evening, November 1, at the first formal meeting of the club. S. M. Rankin, Jr., president of the club, presided over the meeting and introduced the speaker.

Dr. Holton brought up questions of vital interest to the teachers and students of education. His definition of education was: "The process of producing, preventing or modifying changes in human beings."

Dr. Holton divided the materials at the command of teachers into two groups, facts and materials. Elaborating this point, he said, "I have a great deal of respect for the person who can give accurate facts. The basis of all our learning is facts; and the more accurate our knowledge of facts, the more accurate our learning."

Saecker And Hopkins Star In Line

CAUSEY KICKS EXTRA POINT

BOONE'S KICKING FEATURED

BULLETIN

Special to Maroon and Gold

Salisbury, N. C., Nov. 10-

The Elon-Catawba feud was resumed here tonight with great intensity despite the fact that Elon was virtually out of the running for the Conference title. Both teams played good ball but the Christians defeated the Indians by a final score of 7-0.

Catawba unleashed a brilliant passing attack featured by Peiffer and Briggs, but was stopped by the entire Elon team.

Approximately 3000 persons attended the game.

Last night at Catawba's stadium in Salisbury, Elon and Catawba college football teams squared off in their annual "battle of the century." In past years this game has decided the conference championship, but by going down in defeat to Appalachian Saturday night, Elon is virtually out of the race. However this took little interest out of the contest as sectional feeling always runs high between the two colleges. This year Catawba had a good chance at the championship and was in there to win just that, while Elon, still smarting over the 20-6 defeat handed them by Catawba last year, was seeking sweet revenge.

The Catawba Indians, who boast one of the best teams in recent years, were led by Don Peiffer and Cowboy Heckman, who ranks 1-2 in the conference high scoring race. They had plenty of power in these two boys and in Ikey Green, they had one of the shiftiest backs in the conference. Their line was paced by Jack Briggs, Lexington product, who rated all-conference guard last year, Coach Gordon Kinkland's team had yet to meet defeat, and except for their tie with Newberry, had a perfect record.

Six Students Taken In Delta Psi Omega Dramatic Fraternity

Duane Vore to Head Club. Assisted by June Leath and Florine Ray.

The Elon chapter of Delta Psi Omega national dramatic fraternity held its formal initiation in the Society Hall recently. The following new members were taken in: Charlie Jones, Mary Walker, Howard Brown, June Leath, Kenneth Utt, and Florine Ray. Duane Vore, president, was in charge of the ceremony, assisted by Dr. Fletcher Collins, advisor to the organization.