

WHEN YOU OPEN THIS PAPER AIN'T YOU GONNA BE SURPRISED!

Maroon and Gold

Published By And For Elon Students

WINTER QUARTER TO END MARCH 9

VOLUME XIX

ELON COLLEGE, N. C., SATURDAY, MARCH 3, 1945

NUMBER TEN

CAMPUS ELECTIONS PRIMARY SET FOR TUESDAY

SPRING QUARTER WILL BEGIN ON MARCH 12

New Course Schedule Is Announced By Dean Boyden

Official beginning for the third and last quarter of the school year has been announced for Monday morning, March 12. The end of the present quarter is Friday, March 9.

During the next week regular quarter examinations will be given as scheduled by the professors.

According to information received from the office of the registrar, students must register for the next quarter on Wednesday, Thursday and Friday, March 7, 8 and 9.

The hours set for registration are from 11:30 a. m. until 12:30, and from 4 until 6 p. m.

All seniors are urged to see Professor Hook before registering in order to check all courses and credits for graduation.

NEW COURSES

The following courses are to be offered during the spring quarter. Some of these are continuation of winter quarter courses, but many of them are new and independent courses.

Aeronautics: Classes will meet in the evening, covering ground work for flight training. Flight training to be done at Burlington airport.

Art: Private instruction in various phases of art.

Biology: 31. Bacteriology. 41. Genetics. 45. Materials and Methods of Teaching Biology.

Business Administration 22: Principles of Accounting.

Chemistry: 31-3.2 Organic chemistry. 42. Quantitative Analysis.

Commercial: 8-A: Bookkeeping. 12: Bookkeeping and Accounting. 13: Shorthand. 14: Shorthand. 16: Secretarial Typewriting. 17: Advanced Typing. 31: Advanced Dictation. 38: Office Management.

Education: 32: Tests and Measurement. 53: Practice Teaching.

English: 11: Freshman English. 21: Sophomore English. 24: Children's Literature. 33: Shakespeare. 36: Argumentation and Debate. 38: Dramatics. 49: Modern Literature.

French: 21-22: French Literature. Geography 22: Geography of North America.

German 21: Intermediate German. History II: American History. 42: The Contemporary World. 48: American Government and Politics.

Home Economics: 13: Clothing and Textiles. 41: Economics of the Home. 44: Advanced Clothing.

Mathematics: 14 Engineering Drawing. 31: Differential Calculus.

Music: 14: Ear Training and Sight Singing. 24-A: Advanced Ear Training and Sight Singing. 24-A: Public School Music. 33: Church Music and Hymnology. 34: Conducting. 36: History and Appreciation of Music. 42-A: Composition. 46-A: Advanced Public School Music.

Philosophy: 31: Introductory Philosophy.

Physics 13: General Physics. Physical Education 42: Health Education.

Religion II: Bible Survey. 23 Materials of Religious Education. 26: The Mission of the Church.

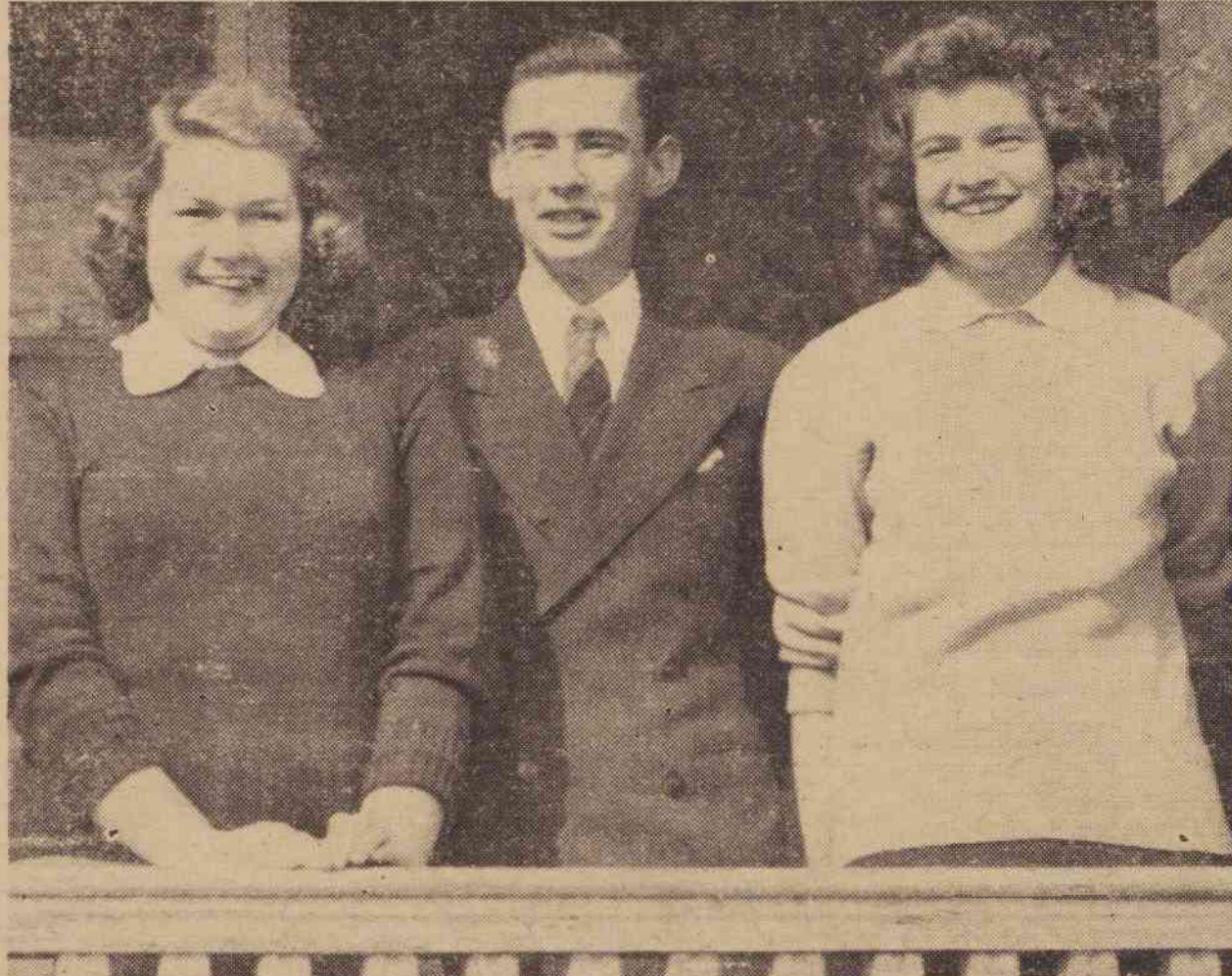
Spanish II: Freshman Spanish.

CLAUDE CHANDLER IS OVERSEAS VETERAN

Pvt. Claude G. Chandler, of Sanford, is with the Headquarters Battery of the 953rd Field Artillery Battalion. His A. P. O. is 230, New York, N. Y.

Claude has now been in action for about eight months on the Western front. Censorship keeps him from revealing much, but we think he has been in some hard fights. He is a "spotter" lining up targets for his battery mates. As we understand it, that means station on advance outpost positions where he can locate the enemy and radio firing directions.

Junior Officers



Left to right: Dorothy Foltz, Luray, Va., secretary; W. C. Clapp, Burlington, vice president; Margaret Rawls, Suffolk, Va., president. Miss Helen Newsome, treasurer, was unable to be present for the picture.

S. C. A. Carnival Is Big Success

Alamance County Basketball Tournament Finals Tonight

Finals in the county high school basketball tournament will be played tonight in the college gym. Elon High School will be trying for a double win. Elon boys' five meets Altamahaw-Osage, and the Elon girls' team plays Sylvan.

Seven teams competed in the play-off. Alexander-Wilson, Mebane, Graham, and Haw River were eliminated in the preliminary games.

Graham, counted as a possible for the finals, was beaten by the Elon boys team in a sensational game. Fast passing and exceptional shooting put the game on ice for the local players, although Graham, favored to win, had taken their measure twice in league contests.

Large and enthusiastic crowds have attended all games to date. The stands will be full tonight, so get there early. "Our thanks certainly go to the college for the use of the gymnasium," stated J. M. Bundy, chairman of the committee of directors of the contest. Elon boys celebrated their entry into the finals with a steak supper generously donated by the college engineer, Mr. Whitesell. A similar reward has been promised to the girls' club as well as the boys' if they take the cup in the finals.

THIS UPSIDE-DOWN WORLD

So many romantic things have happened in the past two weeks that our press man has been standing on his head. For further information, consult page two.

Paige Eaves Is Queen Of W. S. F. Drive

The Student Christian Association sponsored a gala carnival last Saturday night in the gym to raise money for the World Student Service Fund and a total of \$37.43 was collected by projects of the assisting organizations, according to Iris Boland, S. C. A. president. Booths were operated by each of the four sororities, Doctor Johnson Literary Society, and the faculty, while the Freshman S. C. A. had charge of the games and money was also raised through the dancing.

Paige Eaves was named queen of the W. S. F. drive on the Elon campus by receiving 672 out of the total 1691 votes cast for regent for the drive. Margaret Rawls received 445 votes while Mary Coxie came in third with 322. This contest, which was sponsored by the Doctor Johnson Literary Society, aroused competition among the campus groups by the one-cent-per-vote rule. The candidates were picked by the society, each representing a girls' group as follows: Miss Eaves, Beta Omicron Beta; Miss Rawls, Delta Upsilon Kappa; Miss Coxie, Tau Zeta Phi; Joyce Smith, Pi Kappa Tau; Dell Burkhead, Panvo Literary Society; Charlotte Wilson, Day Students Organization; and Patty Cochrane, Freshman Class.

The Delta Upsilon Kappa sorority raised money through a wishing well neatly covered in green and white, while Pi Kappa Tau group featured a side show revealing the "biggest baby in the world" for the sum of two cents. Tau Zeta Phi sorority took fake photographs and the B. O. B.'s collected money by the "pick-a-number-win-a-prize" game.

The faculty, under the direction of Miss Bowmer, Dr. French, and Miss Whittington, operated a "Jot 'em Down" store and \$11.27 was raised for the worthwhile cause.

New Curriculum For Christian Education Workers

Designed to prepare young people for professional work in the field of Christian Education, a new curriculum has been arranged. The four year course will include major emphasis in the fields of Religion and English with special work in Music, Art, Children's Literature, Dramatics, Journalism and Commercial subjects. This course is outlined to meet the general requirements of a liberal arts curriculum, but with these special emphasis it provides preparation for the young man or young woman who intends doing work with young people in the church.

Studies in the field of Religion include courses in the Old Testament and New Testament, Philosophy of Religion, and Materials and Methods for Religious Education. The latter course is designed to cover the specific principles of Religious Education and the techniques involved in working with various age groups in the church. In addition to the liberal arts courses in Modern Languages, Science Psychology, History and Sociology, special work is offered in fields related to Christian Education.

CHORUS TO PRESENT "CRUCIFIXION"

A chorus consisting of Elon College students, townspeople and the choir of the Episcopal church of Burlington will present Stainer's "The Crucifixion" on the evening of Good Friday in Burlington. The chorus is under the direction of Professor Irving D. Bartley. Lucille Morgan will furnish organ accompaniments. Soloists will be announced later.

Seniors Should Check Their Credits With Registrar

The primary preceding the general election will be held in Dean Bowden's office on Tuesday, March 6, at which time the student body will vote upon candidates nominated for student body and student government offices at the assembly last Monday. The names of the two students who receive the highest number of votes will be placed on the ballot for the general election to be held on March 20. The respective classes have also met and made nominations for the offices of their rising class for the college year 1945-46.

The following nominations have been placed in the hands of the electoral committee:

Student body. President—Emerson Whately and Margaret Rawls; vice president—Fred Register, Lucille Morgan, Theresa Coffin, and Hazel Cobb; secretary—Patsy Wrenn, Ella Mae Morgan, Paige Eaves, Leon Hinton, Hal Foster, and Frances Detrick; treasurer—Dale Hensley, Jack Morgan, and Mary Coxie.

Student Senate. President—Junius Peedun; senior representative—Jack Sunburn; junior representative—Frank Rogers and Jack Morgan.

Student Council. President—Elizabeth Parker and Hilda Malone; senior

representative—Betty Bob Stone and Joyce Smith; junior representative—Elmer McPherson, Hazel Cole, and Myrtle Shepherd.

Editor-in-chief of the PHIPSICLI—Ed Daniel and Earl Danieley; Editor-in-chief of the MAROON AND GOLD—Martha McDaniel, Tom Horner, and H. Reid.

Senior class. President—Bill Clapp and Jesse Thurecht; vice president—Elizabeth Braddy, Carl Neal; secretary—Mary Lib Simpson and Earl Danieley; treasurer—Hilda Malone and Martha McDaniel.

Junior Class. President—Bob Graham, Virginia Ezell, and Betsy Smith; vice president—Dot Williams, Theresa Coffin, and Lois Dean; secretary—Louise Clayton, Dale Hensley, and Hazel Cole; treasurer—Ann Strader, Jack Morgan, and Catherine Cooper.

Sophomore class. President—Hal Foster, Betty Benton, and Harvey Rawls; vice president—Frances Detrick and Ella Mae Morgan; secretary—Faye Rickard and Kathy Young; treasurer—Ermine Davis and John Pass.

The electoral committee is composed of five seniors: Mary Ellen McCarty, Edna Rumley, Nell Crenshaw, Eliza Boyd, and Frances Hayes.

BARTLEY ATTENDS LECTURE IN WINSTON-SALEM

Professor Irving D. Bartley attended a lecture by Mrs. Ada Richter, composer and author of many instruction books, held in Winston-Salem Wednesday morning.

Mrs. Richter stressed the need for a greater proficiency in sight reading on the part of the music student and reiterated the statement that each

piano pupil should be dealt with according to his individual needs and capacities. Mrs. Richter stated that out of one thousand music students who take piano only two or three become music teachers of professionals. "Thus," said Mrs. Richter, "it must be realized that the same teaching methods cannot be used for those who take music as an avocation as for the few talented ones who intend to make music their life work."

Elon Players Appearing In Burlington



Those in the photo are, left to right, Malcolm Smith, Elizabeth Johnson, H. Reid, Ermine Davis, and Earl Danieley.

The Elon Players are ending a two-day engagement at the Municipal Auditorium in Burlington tonight. Production of "Out of the Frying Pan," the comedy which was so successful on campus, is being sponsored this week by the Burlington Lions' Club.

The cast is the same as it was when the play was given in the Little Theatre, and Mrs. Elizabeth R. Smith is directing. Mary Coxie, Harold Reid, Frances Pegram, Elizabeth Johnson, Tom Horner, Bob Graham, Ermine Davis, Jane McCauley, Carl Neigh-

ors, Earl Danieley, Jack Sunburn and Leo Smith are the acting personnel. Lem Allen, Kathleen Young, and Ann Strader have charge of lighting, stage management, and make-up.

The set which worked so admirably in our theater has been adapted to use with the cyclorama in the Burlington auditorium. The popularity of the comedy may lead to its presentation elsewhere if time and travelling facilities make this possible. However, plans are under way for new productions during the spring quarter.