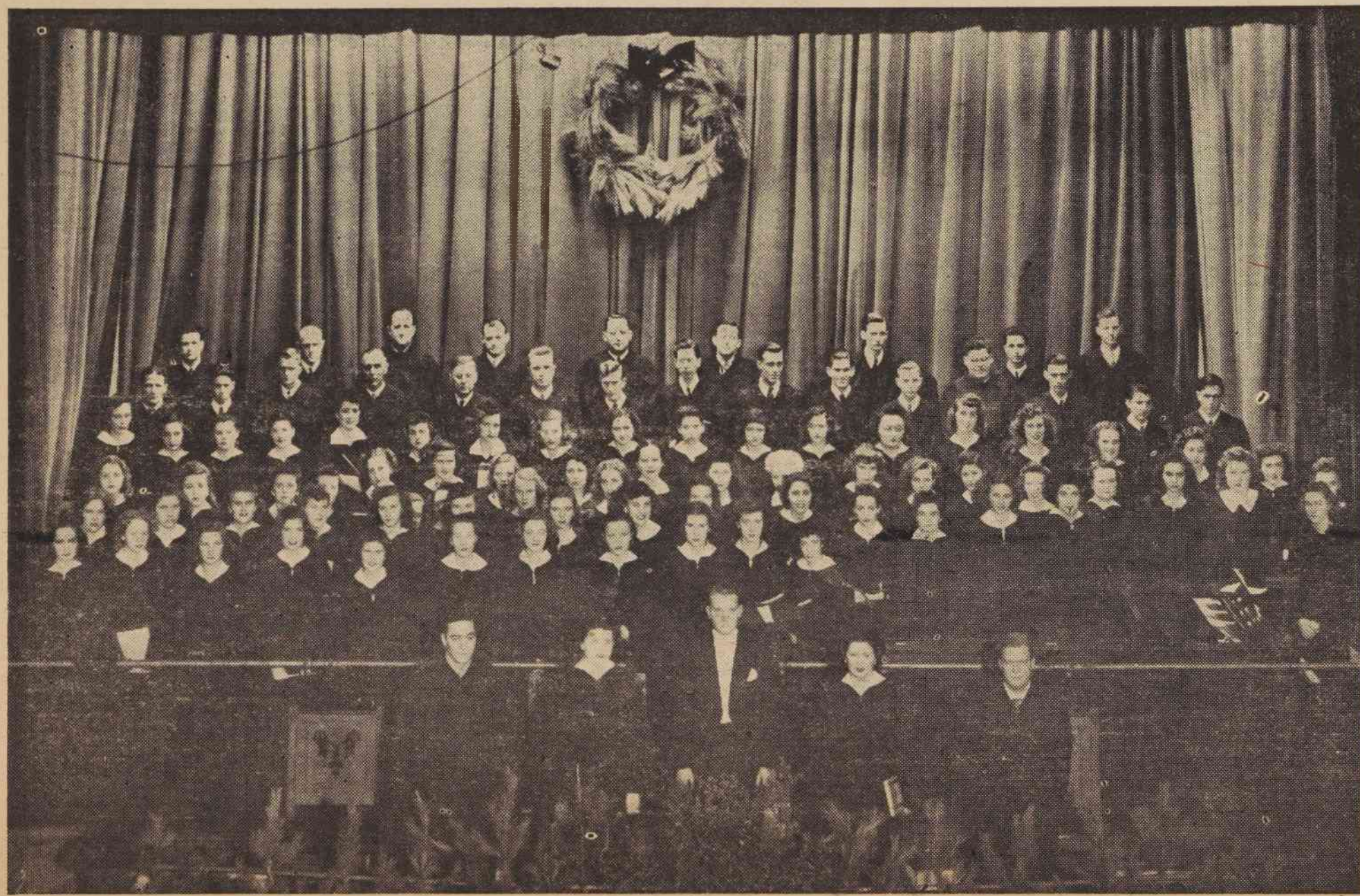


MAY COURT FINALS SET FOR THURSDAY



MESSIAH FESTIVAL CHORUS — Front row: John B. Sealey, tenor; Miss Ethel Kalter, contralto; John S. Westmoreland, director; Miss Exine Anderson, soprano; and Walter Vassar, bass.

Elizabeth Holland And Margaret Rawls Contest For Queen

The primary election for 1946 May Court was held last Thursday with Elizabeth Holland, of Shelby, and Margaret Rawls, of Suffolk, Va., winning over Eloise Fischer, of Oxford, and Jesse Thurecht, of Elizabeth City, for the place as queen of this year's court. The deciding vote will be cast by the student body in the final election which is to be held next Thursday morning in Dean Bowden's office. Emerson Whitley, president of the Student Government Association, announced today. Ed Daniel, of Virginia, Va., and Gerald Hook, Elon College, are in the contest for king.

Primary winners for Junior attendants are Nancy Jordan, Verdalee Norris, Dale Hensley, and Helen Newsome. Winners for attendant escorts are Thomas Hoffman, Fred Register, Steve Castura, and Jim Westmoreland. These must be narrowed down to two in the finals.

Candidates for the Senior attendants are Elizabeth Brady, Joyce Smith, and Florine Braxton Poe. Senior escort candidates are Junius Peedin, Jack Sunburn, Brevitt Hook and Bill Claytor.

AL BURLINGAME TO HEAD VETS CLUB

To foster a spirit of unity and accord among the veterans, to promote an active social program, and to keep the members of their organization informed of all matters pertaining to their interest and welfare, the World War II veterans of Elon have organized a new club, the Association of Veterans of Elon College (A. V. E. C.), which they hope to make an effective and valuable addition to the activities of this institution.

At their initial meeting, the veterans elected officers and a faculty adviser, and a committee was authorized to draw up a proposed constitution. Al Burlingame, of Cambridge, N. Y., was elected president; Floyd Boyce, of Jackson, vice president; and Wayne Taylor of Efland, secretary and treasurer. Paul Plybon was named faculty adviser. The constitutional committee consisted of the officers and sponsor, and Roney Cates, Perry Ayscue, and Miriam McKinney.

At the second meeting of the association, the constitution offered by the committee was accepted in part, and the document will be submitted to the administration for approval as soon as completed.

Charter membership in the AVEC has been endowed upon all honorably discharged members of the armed forces who were enrolled in the college during the fall quarter. New members will be admitted and installed as soon as the club's organization set-up has been fully established.

Besides the veterans named above, charter members of the association include Oabe Bray, Marion Chase, James Cook, Joseph Dunn, Frank Dwyer, Joe Golombek, Albert Haney, Woodrow Howerton, Allen Hurdle, Richard Johnson, Wayne King, Calvin Milam, Laurence Moore, Ed Muford, Bill Williams, and James Wilkinson.



AL BURLINGAME, Cambridge, N. Y., newly-elected president of the Association of Veterans.

Miss Exine Anderson Heard In Concert

Miss Exine Anderson, soprano concert artist from New York City, was presented in recital by the Elon College department of music Wednesday evening, December 5. An appreciative audience heard the beautiful young singer present a varied program. Her voice attains great power and range with ease, and she was superbly accompanied by Fletcher Moore of the Elon faculty of music.

Among the best of her numbers were Brahms' "Immer leiser wird mein Schlummer," "Sin tu amor" by Sandoval, Faure's "Après un reve," "Love went a-riding" by Wolfe, and "Let My Song Fill Your Heart" from Charles. Other selections from Strauss, Wilson and Hageman were highly applauded. Best of all perhaps were the encores from Gershwin's "Summer Time."

The rising young metropolitan artist, who came as soloist for the annual oratorio, "The Messiah," graciously consented to remain for the concert and her courtesy and charm have won a place in many hearts and with many lovers of fine music in Alamance county. A return engagement by Miss Anderson next year will be announced if the event can be arranged.

Winter Quarter Enlists New Students In College

Winter quarter enrollment has now reached 393, exclusive of special students, it was announced today by the registrar's office. A number of seniors finished their courses at the end of the fall quarter and several students have dropped out because of illness. Among the total of 47 new students who have entered to date, 28 are veterans. Additional army and navy men are expected shortly.

Quarters for married veterans are difficult to secure. This condition, which prevails everywhere among our colleges, is being remedied as rapidly as possible. In the emergency, the clubhouse has been remodeled to serve until the new building program is started.

Style Parade Featured In Little Chapel

At the regular meeting of the Women's Assembly Tuesday, December 4, 1945, a style show was presented by A. Sellar's & Sons of Burlington. The show, given in Little Chapel, was sponsored by the Women's Student Government Association under the direction of Miss Ida M. Greenfield.

Girls were picked from each dormitory to model the clothes. Each house president was responsible for the girls in her house. The student-models were fitted by Miss Hobby of Sellar's Ladies' Ready-to-Wear Department. Readings were given during the performance by Miss Evelyn Dickey.

The following girls participated in the fashion parade: Jane Warren, Flo Chandler, Clegg Miller, Betsy Smith, Dell Burkhead, Peggy Comer, Janice Rimmer, Betty Englebert, Jean West, Mildred Johnson, Marguerite Hudson, Elizabeth Johnson, Doris King, Ruby Braxton, and Anne Ashley.

This program is one in a series to be presented by the Women's Student Government Association at the regular meetings of the Women's Assembly.

S. C. A. To Sponsor Christmas Program

The Student Christian Association has planned several appropriate programs for this week, Jack Sunburn, S. C. A. president, announced today. Tomorrow evening the traditional Christmas pantomime "Why the Chimes Rang" will be presented. Marjorie Reidt will be the narrator and Jack Sunburn will direct the play, in which the members of the Student Christian Association will take part.

Each morning this week at 7:40 o'clock in Whitley Auditorium special morning watch services will be held in keeping with the season.

The Christmas caroling will be next Thursday night, which is the eve before the holidays begin, and will be led by members of the choir. Refreshments will be served in the reception hall of West Dormitory after the carolers return. This is an annual custom of the student body.

Professor A. L. Hook Named President Of North State Conference

Dr. A. L. Hook, Professor of Physics and Aeronautics of Elon College and a former graduate of Elon's class of 1913, succeeded Dr. A. I. Newlin, of Guilford, as president of the North State College Conference at its first post-war meeting in Salisbury, November 30, 1945.

Schools represented at the meeting were Catawba, Appalachian, Lenoir-Rhyne, Atlantic Christian, High Point, Elon, Guilford, Western Carolina Teachers, and one non-member, Eastern Carolina Teachers.

Other officers elected were Dr. G. P. Eagers, of Appalachian, vice-president; Dr. David Foust, of Catawba, secretary-treasurer; and Dr. E. G. Purdom, of Guilford, commissioner.

Eligibility of G. I.'s was the main topic of discussion. It was agreed that returning soldiers may enroll at any school in the conference regardless of where they attended college prior to entering service. However, upon once attending a school after release from service veterans will become ineligible upon transfer to any other school. This ruling was identical with the Southern Conference's decision on returning veterans.

The major sports committee made up of Gordon Kirkland of Catawba, Ralph James of High Point, and Shore Neal of Lenoir-Rhyne, had the power to set up rules and to act on any details concerning the annual basketball tournament.

NEW CHAPEL CHECKERS APPOINTED FOR QUARTER

Because of increased enrollment the chapel attendance lists have been revised and posted in Alamance Hall. Checkers for the winter quarter are Lem Allen, Bill Clapp, Earl Danieley, Carl Neal, Kermit Inman, Tom Hoffman, Fred Register, Jack Sunburn, Betty Benton, Hazel Cole, Louise Clayton, Sarah Brewer, Mary Cox, Ermine Davis, Virginia Ezell, Ethalinda Griffin, Betty Sue Lloyd, Margaret Rawls, Ida Marie Parker, Kathy Young, and Joyce Smith.

STUDENT LEGISLATORS MEET IN RALEIGH

MARY COXE WINS OFFICE IN SENATE

Eight Elon students were delegates to the Ninth Annual Student Legislature Assembly, which was held in the Capitol Building at Raleigh on November 30th and December 1st, under the sponsorship of the State College chapter of Pi Kappa Delta forensic fraternity. Elon delegates to the assembly were: Senate—Earl Danieley, head of delegation, Mary Cox, Sarah Brewer, and Elinor Argenbright; House—Thomas Horner, head of delegation, Vivian Walker, Marjorie Reidt, and Orville Robinson. Dr. Merton French, chairman of the faculty committee on debate, accompanied the Elon delegation. Mary Cox, a first year delegate, was elected reading clerk of the Senate, in the election caucus which opened the assembly. Earl Danieley was appointed by the president of the joint assembly to be on a committee to escort Governor Cherry into the legislative halls.

The outstanding speakers of the joint meeting included Governor Cherry, Secretary of State Thad Eure, and Professor E. H. Paget of State College.

The Elon delegation sponsored two bills—a bill providing compensation to disabled teachers, originated by Vivian Walker, and a bill originated by Earl Danieley which would have the superintendent of public instruction appointed instead of being elected by popular vote. Miss Walker introduced the teacher's bill in the House and received stirring applause. Because of the brevity of time of the assembly and the lengthy discussions of earlier legislation, this was the only Elon bill which went through to completion in either house.

The most heated discussion of the legislature arose with the question of inviting delegates from the negro colleges of North Carolina to the 1946 assembly. This proposal, which was introduced by Buddy Glenn of the Carolina delegation, passed in the joint meeting.

A bill sponsored by Atlantic Christian College to abolish social fraternities and sororities was defeated by a

Alamance County-Elon College Teacher Training Program Organized

Dr. S. C. Deskins has announced a revised organization for practice teachers. This plan, worked out jointly by the administrative officials of Alamance county and Elon College, has been in the making for some time.

Authorities in charge of the joint effort are Superintendent M. E. Yount of Alamance County Schools, Dr. Deskins, head of Elon's department of Education, Dr. Theo Dalton, supervisor of instruction for the county, and Principal L. S. McDonald of the local high school. Fundamental objectives are through grounding in subject matter and methods, and practical application of this in observation and practice teaching.

Dean Bowden, Registrar Hook, and the college departmental heads will co-operate in the project. The high standards of efficiency sought are at present being upheld by an excellent personnel. Among the practice teachers are Hilda Malone, Prospect Hill; Elizabeth Parker, Sunbury; Margaret Rawls, Suffolk, Va.; Betty Bob Stone, Siler City; Earl Danieley, Burlington; Martha Anne McDaniel, Anderson, S. C.; Elizabeth Holland, Shelby, Junius Peedin, Fayetteville; Joyce Smith, Whiteville; Ethalinda Griffin, Sumnerfield. Three of these are to enter teaching immediately: Miss Parker at Williamston, Miss Malone at Staley H. S., and Miss Stone at Silk Hope High School.

slender vote in the House, and after a heated discussion in the Senate, was referred to a committee for further study. Mary Cox is a member of this committee which is to report to next year's assembly.

Attending the 1945 Student Legislature were 160 delegates from eighteen North Carolina colleges. Colleges represented were: N. C. State, Carolina, Wake Forest, Elon, Davidson, Duke, W. C. T. C., E. C. T. C., W. C. T. C., Atlantic Christian, Meredith, St. Mary's, Appalachian, Lees-McCrae, Louisburg, Lenoir-Rhyne, Pfeiffer, and Campbell.