

DAY STUDENTS TO GIVE PARTY TONIGHT

PIANO DUO CLOSURES SERIES MARCH 14

Final Concert By Braggiotti, Chaikin Team

The popular fall and winter concert series sponsored by the American Business Club of Burlington will come to a close in Whitley auditorium on the night of Friday, March 14, with the presentation of Braggiotti and Chaikin, internationally famous piano duo. Starting time is scheduled for 8:15.

One of the country's most accomplished keyboard teams, Braggiotti and Chaikin have drawn wide acclaim for their masterful technique and fingering in every kind of music ranging from the classic works of Bach right down to today's boogie-woogie. Among their widely applauded interpretations expected to be offered during their Whitley appearance are George Gershwin's melodious "Rhapsody in Blue" and "Concerto in F." They will also present many of their own delightful and humorous improvisations.

Previous programs enjoyed this season by the patrons of the platform series were given by the Westminster Choir, the Footlight Favorites quartet and Warren Simms, topnotch American magician. The series is sponsored each year by the American Business Club for the promotion and development of athletics in Burlington City schools.

"COLONNADES" SPONSORS CONTEST

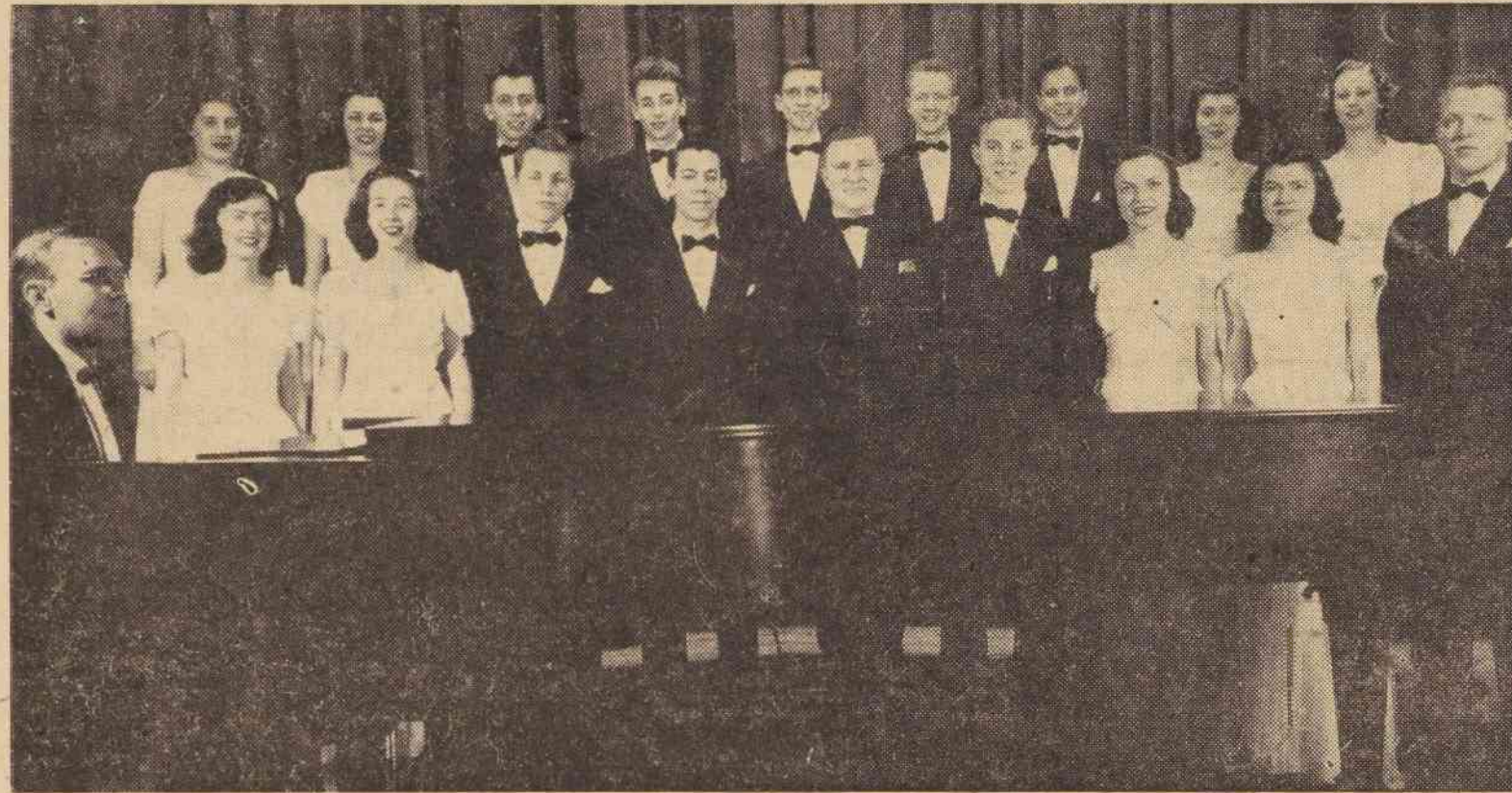
ELON COLONNADES, the college literary magazine, today announced that, beginning this spring, it will conduct an annual writer's workshop competition for students of junior colleges in the state of North Carolina, with the first-place winner receiving a tuition scholarship from the college. Work submitted may be of three kinds: Poetry, prose essay, or short story.

Professor G. A. Johnson of the Elon faculty will offer two supplementary prizes, and another donor a third.

Final date for acceptance of manuscripts to be entered in the contest will be April 1.



THE IRRESISTIBLE FORCE. This is Miss Beryl Force, whose brilliant portrayal of Olivia Grayne, the young spinster in Elon Players' production of "Night Must Fall," won the plaudits of enthusiastic audience in Whitley auditorium last Wednesday. Play appears in Burlington Friday night.



ELON CHORAL ENSEMBLE which traveled to Suffolk, Va., this weekend, to give special concerts for various churches, includes (front row, left to right) Miss Lucille Morgan, Miss Violet Blackmon, Jack McFayden, Emery Gilliam, Kirmitt Inman, Dick Tuttle, Miss Jessie Ree Doughtie, Miss Ella Mae Morgan; back row) Miss Jeanne Meredith, Miss Dorothy Jones, Fred Easter, Mike Copeland, Baxter

Twiddy, Warren Johnson, Bill Scott, Miss Elizabeth Johnson, and Jane Lewis. Miss Dorothy Shepherd was not present when picture was made. Accompanying the group were Professor Fletcher Moore (seated at piano, left) and Professor John Westmoreland (extreme right, of the music faculty).

Fine Cast Shows Talent In Giving Mystery Play

On Wednesday night of this week the Elon Players scored another dramatic triumph with their presentation of "Night Must Fall," an absorbing melodrama which captivated the audience from the first moments of the play until the final curtain. Each member of the cast gave a fine performance, but special mention should be given to Mrs. Elizabeth R. Smith and Miller Basnight, who co-starred, and to Miss Beryl Force, who played the top-supporting role. Mrs. Smith, who portrayed a tyrannical old hypochondriac, also directed the play. Basnight is remembered by many of the students at Elon for excellent performances in previous Player productions, and presently is at Chapel Hill, where he is studying at the University of North Carolina. His portrayal of Danny, the egocentric killer, was well received. Miss Force's commendable performance was her first for the Players. Previously she has been active in assisting with the Dramatic Club productions.

The intensely dramatic atmosphere of the play was felt by the audience and was relieved only by occasional nervous laughter during lighter moments of the action. The large audience gave its enthusiastic approval of the Elon performance. A matinee presentation was scheduled for high school students yesterday and final performance is to be given in the Burlington city hall next Friday night, February 28.

Besides the main characters, other capable members of the cast include Delmar Brown, as Hubert Laurie; Miss Kathleen Young as Mrs. Terrence; Bob Furr, as Inspector Belsize; Miss Jeanne Parks as Dora; and Miss Irene Rummage as the nurse. Much time and work was spent by the Players in making this the best of their season's productions. Cues and entrances were well-timed, and if any were missed they were not apparent to the audience. The stage was skillfully designed and fully appropriate to the atmosphere of the play.

Amy Campbell did an excellent job

as stage manager, assisted by Arthur Dickson and George McCaughrean. Other committees connected with the play deserve commendation for their work in helping to make "Night Must Fall" successful. The players' next major production will be "Ah Wilderness," which will be given in May.

NOVELTY TRIO BRINGS TUNES, FUN TO CAMPUS

The ghost of vaudeville was resurrected in Whitley auditorium on Thursday night, when the Alexander Novelty Trio, three highly versatile entertainers, performed for the Elon student body. The program of one hour was filled with music, humor, drama, and original novelty acts, which kept the audience tittering and laughing throughout.

Mr. Alexander, the male member of the trio, did everything from playing "Sioux City Sue" on a bicycle pump to giving an amusing exhibition of ventriloquism with the aid of his dummy, Chester. His talents included producing recognizable tune from a toy balloon, giving bird imitations on the Spanish guitar, and playing such other instruments as the ocarina, saxophone, ukelele, and musical saw.

Mrs. Alexander doubled at the saxophone and piano; and Miss Miller, the youngest member of the act, played the saxophone, banjo, and violin, and offered some songs and dances, monologue, and pantomime. The audience was especially pleased with the trio's "singing doll" act, in which Miss Miller portrayed a mechanical doll which walked and talked—until it ran down.

GREEK SOCIETIES ADD MEMBERS

Thirty-three men and twelve women accepted bids to Elon's eight Greek letter social clubs on bid night, Saturday, February 8, and have been initiated into the societies as new members.

The following men were admitted to the school's four fraternities: Alpha Pi Delta—Lonnie Askew, Gordon Bowers, Tom Fulghum, Bill Jobe, Jack Meredith, Charles Robinson, Ernest Schenk, Wesley Troy, Rucker Turner, James Widenhouse; Iota Tau Kappa—Paul Causey, John Duhl, DeWard Hooker, Harold Parks, Jack Russell, Clarence Swinney, J. P. Thompson, Arnold Melvin, Malcolm McCracken; Kappa Psi Nu—Max Neese, Wayne Smith, John Somerville, Brantley Wall; Sigma Phi Beta—Bob Barrett, Delmar Brown, Mike Copeland, Mills Everett, George McCaughrean, Wally McCulloch, Ed Nash, Harvey Rawls, Lou Savini, and John Watson.

New sorority members include the following: Delta Upsilon Kappa—Betty Baker, Frances Branson, Doris Peedin, Verona Daniels; Pi Kappa Tau—Amy Campbell, Ganelle Sutton, Norma Jean Edwards; Tau Zeta Phi—Betty Jo Chilton, Nancy Eller, Shirley Joyner, Mary Schuster, Pat Steinmetz. Beta Omicron Beta, the fourth sorority, took no pledges.

GUILFORD UPSETS CHRISTIANS, 49-39

Calamity befell Elon's basketball team Thursday night, when the Christians went to Guilford for a return engagement with the underdog Quakers, whom they had defeated last week, 55-48. This time Guilford scored a stunning ten-point upset, 49-39, to knock the Christian quintet from any mathematical chance of drawing down the top position in next week's North State tournament.

Elon held a 22-17 halftime advantage, and Roney Cates, leading scorer in the south, added 17 more points to his already huge total; but Guilford just wouldn't be licked.

Elon's regular season ended last night, Friday, against Atlantic Christian at the college gym, and the year will be completed with the playing of the tournament, which starts Monday at High Point.

EXAM SCHEDULE ANNOUNCED

The following schedule has been announced by Dean Bowden for the winter quarter examinations:

Wednesday, February 26, morning exams for all 8 o'clock classes; afternoon; exam for all afternoon classes.

Thursday, February 27, morning exams for all 9:30 classes; afternoon; exam for all 10:30 classes.

Friday, February 28, morning, exam for all 11:30 classes.

IMPORTANT: All English 12 classes take exam on Wednesday, February 26, instead of hour normally scheduled. For further information regarding this, see your instructor.

Vacation begins officially at noon, Friday, February 28, and classes will convene to start the spring quarter at 8 a. m., Monday, March 10.

Entertainment To Be Offered In Society Hall

Day Students Organization of Elon is sponsoring an informal party—skirt and sweater, if you please—tonight at 8 o'clock in the Society Hall of the Alamance building. As their theme the Day Students will stress George Washington, in commemoration of our first president's birthday today.

Elaborate plans have been made by the various committees of the sponsoring organization, including decoration scheme, musical entertainment, and refreshments.

Heading the entertainment committee is Wade Lowe; in charge of refreshments are Mrs. Lois Dean Casey and Miss Hilda Neese; chairman of the decoration committee is Miss Kathy Young; chairman of the finance committee, Wally Mack; in charge of publicity, Miss Helen Cobb; and clean-up supervisor, Max Neese.

This year's officers of the Day Students Organization are Miss Dale Hensley, Elon College, president; Miss Helen Cobb, Burlington, vice-president; Max Neese, Elon College, secretary; and Wally Mack, Burlington, treasurer. The organization is sponsored by Professor G. A. Johnson of the business administration department.

Tonight's party is for the entire student body, and the Day Students cordially invite everyone to attend.

PROFESSOR JOHNSON ADDRESSES I. R. C.

The International Relations Club members were afforded the pleasure of having Professor Johnson of the Commercial Department speak before them Monday night, the 17th. Speaking on "Europe's Boundaries," Professor Johnson held the viewpoint that man-made boundaries are not as effective as, but more dangerous than, those created by nature. Among the examples that he cited was the geographical settlement in the post-war period of 1919 and 1920. Following the address, an open discussion was held, during which questions were put forth by the attending members.

Members of the club are reminded that, because of exams, there will be no meeting on Monday, the 27th, but the I. R. C. will convene on March 10th.



IN CONCERT SERIES in Whitley auditorium on March 14 will be Braggiotti and Chaikin, pictured above, internationally famous piano duo. Offering a program varying from Bach to boogie-woogie, they will bring to a conclusion the American Business Club winter concerts for this year.