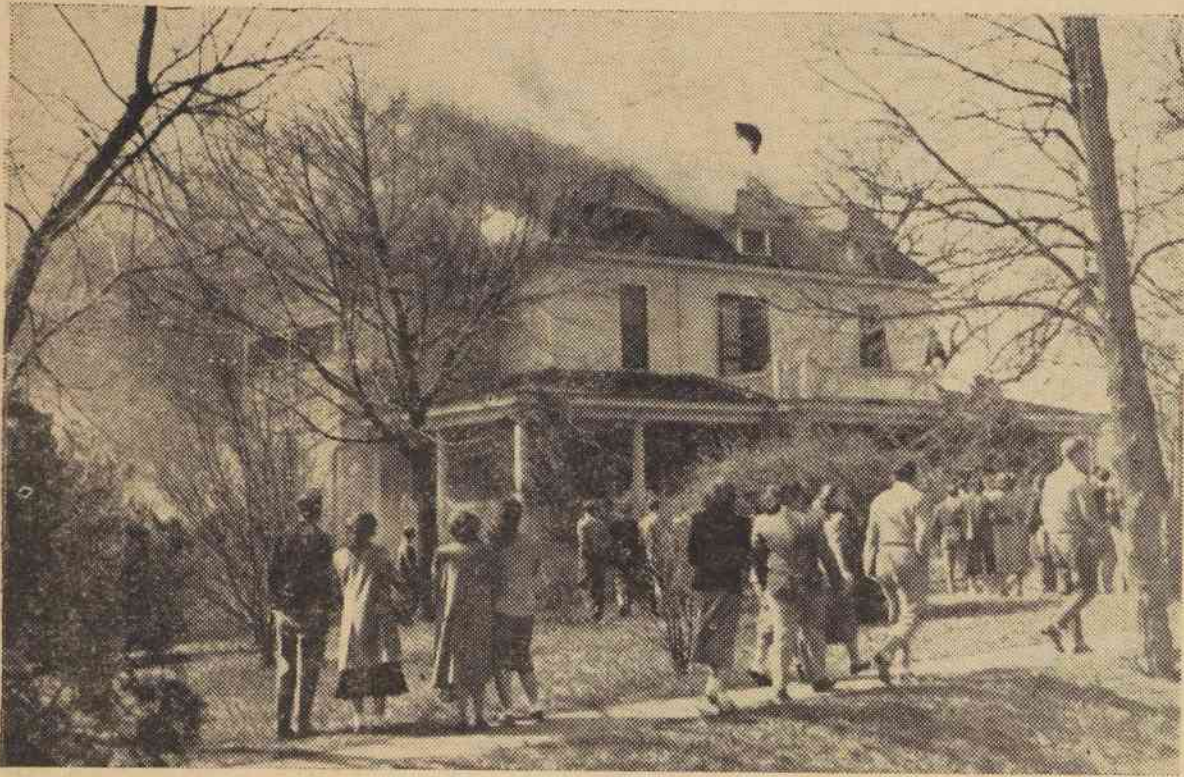


Atkinson Apartments Considered A Total Loss



School Has Third Fire Since 1923

With the Administration Building disaster of 1923, and the destruction of the Dining Hall wing of West Dormitory in 1942, the Atkinson House blaze of March 11 is the third major fire in the history of Elon College.

A total loss for all practical purposes, according to Dr. L. E. Smith, the 57-year-old landmark was partially consumed by a fire which started under the roof and destroyed the second floor of the structure before being extinguished by fire departments from Burlington, Gibsonville and Elon College.

Despite the combined efforts of the three fire departments and members of the student body, the building has been written off by college officials as a total loss. Although the ground floor was not damaged by flames, it was ruined by water and smoke. The house was completely covered by insurance.

"The college wants the insurance adjusters either to give full value for the house or assume the responsibility for rebuilding it," said Dr. Smith.

A contractor reportedly stated that it will cost approximately \$25,000 to rebuild the house. It is not certain whether or not the structure will be rebuilt on the same site.

Atkinson House was built in 1892, and purchased by J. O. Atkinson in 1897. The college bought it from the Atkinson heirs in 1943 and converted it into faculty apartments.

Improvements made on the house by the college included the addition of an upstairs room, two baths and two kitchens. The 14-room house had four apartments.

At the time of the fire, the building housed three families: Dr. and Mrs. James Howell, Professors Doyle and Stella Bruton, and Mr. and Mrs. James Lewis, a student family. All the burned-out families were accommodated with living quarters the afternoon of the fire.

The Howells and Bruton's now live in Vets' Apartments, and the Lewises live in Burlington.

M & G Cameraman Gets Shots Of Fire Fighters In Action

Harvey Foushee, student photographer who was the first to hear Mrs. Bruton's yells of "Fire," took time only to relay news of the fire to students and Mr. Bruton before rushing for his camera and film in the Science Building's photo lab.

Above left, students arrive on the scene as more than 100 students already inside begin the removal of furniture.

Upper right, "Speck Harper, Bill Matzes, Tod Ferneyough and Marion Adams pass furnishings from

the second floor as flames begin eating through the roof.

Below, firemen gain the upper-hand as the roof caves in.

Below right, a fireman plays his hose on the roof as the fire begins to recede. All furniture had been removed within 20 minutes, and before it could be damaged with water.

The aerial shot, below center, was taken by Frank Bruton, Burlington photographer, who had gone aloft to take pictures of the college campus.



May, Gibsonville Fire Chief, Sustains Only Severe Injury

The firefighter who sustained the severest injury at the scene of the Atkinson House blaze was G. B. May, Chief of the Gibsonville volunteer fire department, who suffered lacerations of the head when he was thrown from the Gibsonville truck.

An ambulance, which was already at the scene of the fire, took Chief May to St. Leo's Hospital in Greensboro immediately. Fearing skull injury and possible injury to

vertebrae, the hospital kept May under observation for two days.

On Monday, March 14, the staff of St. Leo's Hospital released May, satisfied that he had recovered satisfactorily from the mishap.

Chief May's misfortune occurred when he failed to anticipate the sudden stop made by the Gibsonville fire truck in front of Atkinson House. His untimely descent from the truck put him out of action, and he was unable to direct the efforts of his crew.



Students Get All The Credit For Clearing Furnishings

By HOYLE BRUTON

The world was off its axis Friday morning anyway. Unusual things were happening, and there were ominous portents in the air.

Mrs. Bruton went to Chapel for the first time in weeks or months. She should have gone home, as usual.

Dr. L. E. Smith himself took the rostrum in Chapel. He spoke of the old days when there was little water pressure in Elon College, of wells going dry, and of a great day of reckoning.

A few minutes later Atkinson House was ablaze, constituting a day of reckoning of a sort, and frustrated students who held an Elon College fire department hose that could hardly spit over its chin were thinking that the wells had gone dry again.

Leaving chapel, Mrs. Bruton was

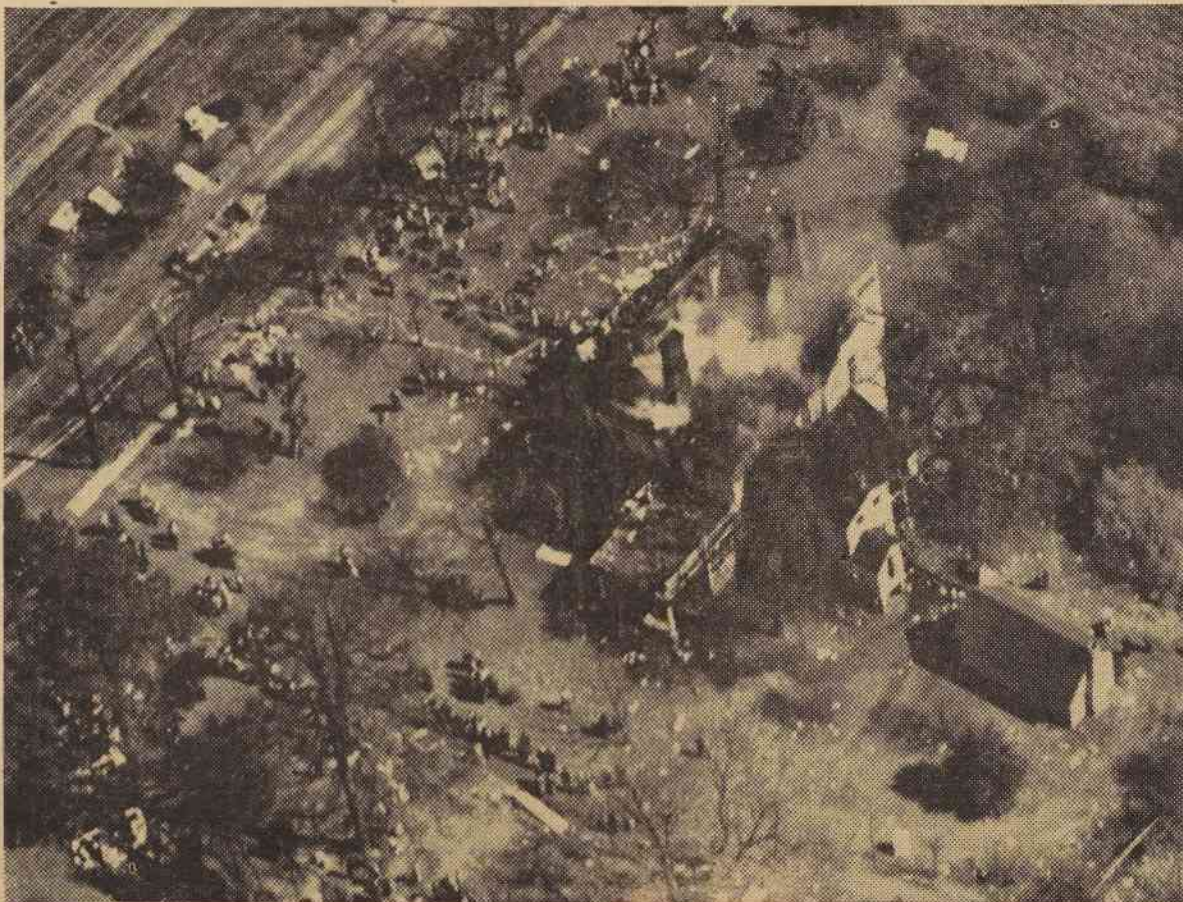
met by a Negro woman who pointed out the the smoking house, and said that nobody was home there. Mrs. Bruton rushed into the house, checked the source of the smoke, and phoned the fire department. Outside again she screamed across the tracks to students leaving chapel, sacrificing a little dignity for a lot of help.

Help came fast. Within a few minutes more than 100 students were inside the house, throwing pans of water and moving out furniture unbelievably fast.

Dr. and Mrs. Howell took inventory of their possessions as students brought them out. According to reports, Mrs. Howell pleaded with students to rescue her nerve medicine, for which she confessed a need.

Jim Lewis blistered a hand

(Continued On Page Four)



Student Volunteers Hurt In Work During The Fire

At least three members of the Elon College student body were known to be on the injured list when the smoke cleared away from the fire which destroyed the Atkinson House apartments last Friday.

The most spectacular injuries were sustained by Bill Anderson and Dave Griffith when they toppled from the second floor side porch of the structure. The railing over which they were passing the furnishings of the second floor apartments became so weakened from the weight of the fire hoses and the strain of the evacuation proceedings that it collapsed.

Anderson was forced to limp to the ranks of the spectators, and Griffith aggravated a service-incurred back injury, forcing him to resume wearing a brace which he had discarded.

Ireland Upchurch, the other casualty, suffered a hemorrhage of the elbow, forcing him to carry his left arm in a sling for three days. Upchurch is uncertain as to whether his injury came from a vault over the college wall on the way to the fire, or from a blow sustained while in the burning building.

Students report that a few of the collegiate firefighters had skull plates from service injuries. They could have been hurt badly had they been struck by falling timbers.

Considering the number of persons engaged in removing the furniture and the rapid progress made by the flames, it is fortunate that the Atkinson House fire injury list was limited to three students.