

## Players Win Applause For Show In Whitley

The Elon Players rang the bell of audience appreciation time and again with their rib-ticking presentation of Francis Swann's delightful comedy, "Out Of The Frying Pan," in Whitley Auditorium here on Tuesday and Wednesday nights of last week.

The performance hit a mirthful tempo in the first scene, and the Players held that pace till the final curtain. The audience laughed at exactly the right time, which was virtually all the time in this play, and the applause at the end held through four curtain calls.

Veteran performers on the Player roster were pushed hard for honors by several less experienced actors as the cast portrayed the trials and tribulations of a group of youngsters seeking a career on the New York stage.

Nash Parker, veteran of many roles, kept the audience in stitches much of the time, but he was matched by the performance given by Jerry Allen and Gardner Underhill. The latter, a freshman playing his first role, was particularly effective in several scenes.

Carolyn Poythress, who captured Underhill's heart in the end, also captured the hearts of the crowd with her enactment of the "beautiful but dumb" ingenue, and she drew able support from Emma Jean Clayton and Rosamond Bromley, who joined her in the ambition for a life behind the footlights.

Ed Engels, as the hard-bitten New York theatrical producer, turned in his best performance to date, and Anne Truitt played the Irish landlady's character role in a manner that pleased the crowd. Dick Levine and Bill Kivett did well with minor roles. Altogether, it was another bright mark on the record of Mrs. Elizabeth R. Smith, who directed the show.

## Student Christian Association Meet

The Student Christian Association held its regular meeting on Thursday, February 9th, with an interesting program for those present. The meeting opened with worship service, conducted by President Oliver Howell, with Warren Matthews leading in responsive reading. The meet concluded with the singing of hymns, playing of recorded organ music and the reading of Max Vestal's original poem, "I Saw God."

President Oliver Howell announced that the membership drive had proven very successful and that a special dedication service would be held for new members. Plans were discussed for future meetings and for projected social events, and Paul Varga reported on the recent inter-denominational conference at Chapel Hill.

## STUDENT LEGISLATURE

(Continued From Page One)

to the President of the Student Body to appoint a three-man committee to enforce parking regulations previously enacted by the Legislature.

(3) All female members of the Honor Council, Student Council and Legislature to be granted all rights and privileges of members of the Senior Class.

(4) A request and recommendation to the administration that women students be allowed to apply for off-campus permission until 6:30 o'clock on week-days and 1:30 o'clock on Saturdays.

The girls athletes of Elon College were represented at a meeting of the AFCW (Athletic Federation of College Women) held at Guilford College on Saturday, February 4th, the local delegates being Miss Ruby Adams, women's physical education director, and Jeanne Pittman and Aleane Gentry, representing the girls themselves.

## DEBATERS HERE TOMORROW NIGHT

The Elon debaters will open their home forensic campaign tomorrow night when the Davidson College speakers invade the campus, with a possibility that Lenoir-Rhyne may also send a team to make the contest a triangular one. The debates will be on the intercollegiate topic of "Nationalization of Basic Industries."

Prof. William H. Struhs, who is directing the Christian debaters this year, stated that Ray Hayes and Bill Sinclair will defend the affirmative for Elon, while Billy Mittelstadt and Emmett Nesbitt will argue the negative. The arguments will get underway at 7 o'clock in Society Hall and in one or more of the classrooms on the third floor of Alamance.

## With Elon Players..

(Continued From Page Two)

people really work at it, sitting down at every opportunity and going over and over their parts, only to forget when they are supposed to give the lines they have so painstakingly assimilated.

Some people figure that characterization is the important thing. They don't bother to memorize the lines, but they try to get so immersed in the part that whatever they say will be right. As this requires a good deal of imagination, it is seldom successful. Then there are those who think that if they are around long enough they will just pick up the lines automatically. Somehow, this doesn't turn out quite the way it is supposed to, and these people find themselves knowing everyone's lines but their own. Finally there are always a few who never let go of their script and go through all rehearsals reading their lines. ("Don't worry, Mrs. Smith, I'll know my lines by the night of the show.") These people are responsible in the most part for the frantic attempts to ad lib which seem to be an integral part of amateur theatrics.

### Smoothly At Last

Suddenly, out of all the sound and fury, there comes the day when rehearsal goes so smoothly that it leaves everyone gasping. This happens with so little warning that one can only conclude that everyone knew his lines all along, and up until this point the cast has been playing a game called "Let's see how far we can stretch Mrs. Smith before she breaks."

Once the rehearsals are getting along all right, the question of fixing the set is raised again. It is now that the conspicuous absence of the aforementioned committees makes itself felt. Blue flame can be seen spurting out of the windows and doors of Mooney as a

## Boys Enter Ping Pong

The boys' singles ping pong play drew twenty-five entries, and play is moving ahead in the early brackets, with pre-tournament dope establishing Pete Marshburn and Ollie Bass as favorites to cop the title. Six couples signed for the boys' doubles play.

The entries for the boys' singles included Henry Wentz, Charlie Dickerson, Pete Marshburn, Bill Winstead, R. D. Levine, Worth Womble, Yono Mark, Charles Lyman, Charlie Bishop, Max Littlejohn, Jim Parker, Walker Fesmire, Wayburn James, B. Devin, Ernie Kluttz, Hank DeSimone, Lefty Taylor, Joe Deaton, Leo Kampman, Lincoln Shepperton, Clint Horner, Donald Maness, Dave Mondy, Gardner Underhill and Ollie Bass.

The doubles entries included Pete Marshburn-Deward Hooker, Yono Mark-Walker Fesmire, Grover Castellioe-Charlie Dickerson, Lefty Taylor-Lincoln Shepperton, Worth Womble-Bill Harris, and Ollie Bass-Dave Mondy.

## Close Race Features Campus Cage League

By GEORGE STANLEY

### STANDINGS

	Won	Lost	Ave.
Kappa Psi Nu	10	1	.990
South "A"	6	1	.857
North-North	9	2	.818
Sigma Phi "A"	9	3	.750
I.T.K.	8	3	.727
Oak-Carlton	7	4	.636
South-North	7	4	.636
East	7	4	.636
East	7	5	.583
Evs' Apts.	5	7	.416
Club-Club	4	6	.400
South "B"	3	6	.333
Vets' Court	3	8	.272
Alpha Pi	2	9	.181
Day Students	1	9	.100
Sigma Phi "B"	0	12	.000

## Art Department Offers Exhibit

The Art Department sponsored a special art exhibit in the Music listening room on the first floor of Alamance Building on Wednesday, Thursday and Friday of last week, with an interesting collection of textiles and water color paintings on display under the direction of Miss Lila Newman.

The exhibit featured the Meeta Hills Collection of Textiles from Guatemala, along with the Meeta Hills Collection of paintings, all designed to show the customs and life of the people in Guatemala, Mexico and Yucatan. The textile display included blouses, dresses, shawls, bags and antique embroidery.

## DEBATERS SHOW WELL

(Continued From Page One)

Nesbitt pitted against P. G. Kalagris and Bruce Pruitt, another Davidson combination. The Davidson team won the decision in this contest.

The Elon affirmative met still another Davidson team in the second of the affirmative contests, Sinclair and Hayes again speaking for Elon against Ben Dryman and Frank Wallace, of Davidson. Professor Griffin, who judged this contest, awarded the decision to Davidson on an unexplained technicality.

The second contest for Elon's negative speakers saw Mittelstadt and Nesbitt contesting with Frances Clement and Jo White, two girls from Randolph-Macon, in a debate which proved one of the best of the series. The decision for Randolph-Macon proved a surprise to many of the audience.

A change has taken place in the standings of the campus cage league, as Kappa Psi Nu took over the leadership from South, the team which had been on top all he season. The South club suffered its lone defeat at the hands of North-North, possibly the most improved team in the loop.

Meanwhile, the Kappa Psis have won three straight games during the past two weeks to move ahead. North-North, holding third place, has lost only to Kappa Psi by a 30-20 score and to Sigma Phi "A" by a 30-29 margin.

Tom Quackenbush paced his North-North outfit to victory over South "A," hitting 14 points in the fray. The South outfit was playing without Ernie Kluttz, Joe Deaton and Joe Durso in this game, and now the impending South-Kappa Psi battle should prove one of the best of the season.

Sigma Phi "A" moved into fourth place by winning three games without loss, forging ahead of I.T.K. in the standings by defeating the I.T.K. five 22 to 20 in a hard-fought contest. Oak-Carlton dropped from fourth place to sixth by losing two games in the past week.

Day Students won their first game of the season recently when they defeated Alpha Pi 28 to 24. The Day Students were paced to victory by Jimmy Burns, who hit the hoops for 17 points.

East has the distinction of scoring the most points in a single game when the East quintet dropped the hapless Sigma Phi "B" 69 to 20. Littlejohn and Reid had 20 points each in the victory, while Gene Hardy led the Sigma Phi outfit with ten points.

Plans are now being made for the intramural basketball tournament, which is to be held when the regular season is completed. The top eight teams will compete. Winners of the tournament will not receive points toward the annual team trophy, since those go to the winner of the regular season play.

Prof. William H. Struhs expressed himself as pleased with the showing made by the inexperienced Elon speakers, who found themselves contesting debaters of much more experience in forensic contests. He expects the Elon debaters to show up much better in future contests, as they gain in training and experience.

## WAA CONSTITUTION ADOPTED BY GIRLS

The new constitution for the Women's Athletic Association was adopted as written at a special meeting of all women students of Elon College, which was held following the regular chapel gathering on Monday morning, February 13th.

The new constitution was explained to the students, and the favorable vote followed brief discussion. By this adoption the Women's Athletic Association of Elon College becomes affiliated with the women's organization of both the state and nation.

The new WAA replaces the old Women's Intramural Council in the direction of girls' sports on the campus, and officials of the group, under the direction of Miss Ruby Adams, plan an ever-widening program of athletics at Elon.

## FORTY-THREE PLEDGES

(Continued From Page One)

ter, added nine pledges. The active members include Paul Causey, Phil Cothran, Ira Cutrell, Jeff Davis, Jim Elkins, Joe Erickson, Lacy Gane, Claude Gentry, Deward Hooker, Joe Jernigan, Wayne King, Malcolm McCracken, Pete Marshburn, Arnold Melvin, Jim Murray, Alvin Pate, Bill Perkinson, Jimmy Parker, George Shackelford, Jack Wayland and Carl Woods. New pledges are Fred Biangardi, Bill Blackstone, Branch Bragg, Sal Gero, James Hamrick, Al Ludwig, Harold McRae, Billy Rakes and Bob Reece.

KAPPA PSI NU, with twenty-one members in school, pledged three new boys. The active members include Bill Barger, Al Eubank, Lester Foster, Art Fowler, Roger Gibbs, Jim Hailey, Speck Harper, Wendell Isley, James Jones, Eugene Johnson, Hal Johnson, Warren Johnson, Bill Johnston, Charles Lynam, Billy John-Larry McCauley, Bob Oldham, C. K. Siler, Lawrence Sykes, Ed Watkins and Bill Williams. New pledges are Navarre Barron, Theron Gilliam and Bob Kirby.

SIGMA PHI BETA, with nineteen active members, added ten pledges. The active members are Joe Bateman, Charles Bishop,

Herman Daniels, Charles Gibson, Jack Hanel, Gene Hardy, Billy Hopkins, Leroy Howell, M. J. Howell, Ken Jacobs, Leo Kampman, Claude Manzi, Clement Mosser, Bill Perry, Lou Savini, Bob Smithwick, George Stanley, Carl White and Bob Whitmore. New pledges are Wallace Burke, Walter Deal, Joe Durso, Ernie Kluttz, Ralph Long, Dave Mondy, Bernie Owens, Joe Spivey and Ollie Thompson.

BETA OMICRON BETA, with nine active members, added two new pledges. The active members are Geneva Cooper, June Cooper, Sue Edwards, Lucy Everette, Evelyn M. Graham, Virginia Pla, Marion Turk, Jane Upchurch and Martha Veazey. New pledges are Emma Jean Clayton and Joan Gladden.

DELTA UPSILON KAPPA, with nine active members, pledged eight new girls. The active members are Jean Harris, Maxine Keck, Nancy Keck, Kay Kozakowich, Virginia Latta, Jeanne Pittman, Charlotte Rothgeb, Laverne Russell and Louise Spence. New pledges are Rosamond Bromley, Reita Durham, Gaynelle Dyer, Jean Fuqua, Jane Fuqua, Jane Peterson, Ann Strole and Doris Taylor.

PI KAPPA TAU, with ten active members, took two new pledges. The active members are Frankie Cassell, Dolly Ree Foster, Zeda Grogan, Gilmer Lee Lynch, Dorothy Parker, Beth Raines, Joan Summers, Gaynelle Sutton, Marion Tickle and Jane Transou. New pledges are Sharon Black and Beverly Simpson.

TAU ZETA PHI, with ten active members, added seven new pledges. The active members are Maxine Abercrombie, Barbara Bailey, Evelyn Booth, Flora Gilbert, Elna Doris Huey, Heler Jackson, Shirley Joyner, Fleta Moffitt, Tessie Taylor and Nina Wilson. New pledges are Jean Bason, Dolores Evans, Melva Foster, Sara Foster, Janie Goodman, Mary Elizabeth King and Phyllis Tucker.

The girls' ping pong tournament was moving on toward the finals this week, with Jane Upchurch and Jitter Horner already advanced to the semi-finals, and with four other girls safely in the quarter-final round.

SOUTHERN CALIFORNIA

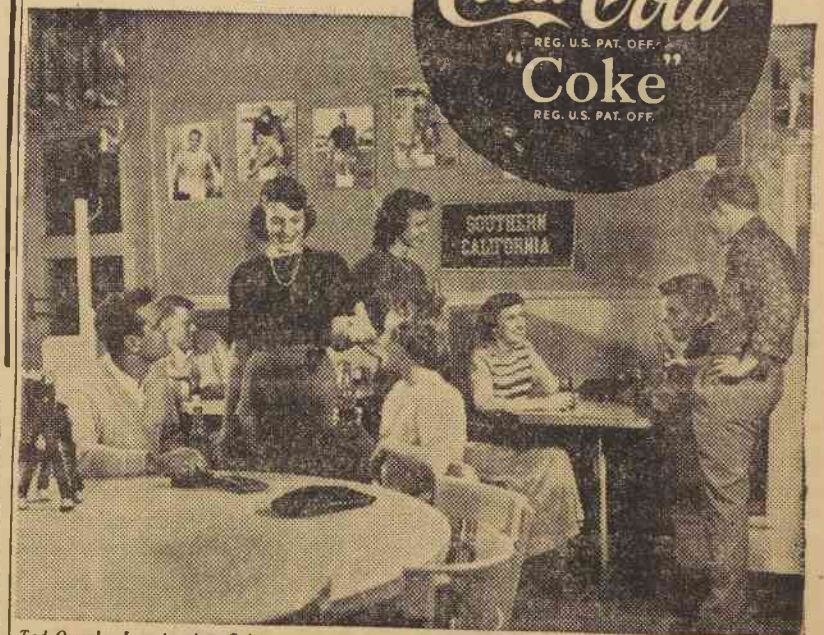


Vol XL Los Angeles, Calif., No. 135

In Los Angeles, there is always a friendly gathering of University of Southern California students at Ted Owen's. And, as in colleges everywhere, ice-cold Coca-Cola helps make these get-togethers something to remember. As a refreshing pause from the study grind, or on a Saturday-night date—Coke belongs.

Ask for it either way... both trade-marks mean the same thing.

5¢



Ted Owen's, Los Angeles, Calif.

BOTTLED UNDER AUTHORITY OF THE COCA-COLA COMPANY BY BURLINGTON COCA-COLA BOTTLING COMPANY

© 1949, The Coca-Cola Company

DRINKS SNACKS ICE CREAM

## College Bookstore

"THE HUB OF CAMPUS LIFE"

EAT AT THE  
ELON GRILL  
STEAKS - HAMBURGERS  
SANDWICHES

Meet, EAT and Play Checkers at  
THE CAMPUS SHOP  
Milkshakes, Ice Cream, Sandwiches,  
Patent Medicines

"If we make ya sick, we've got the stuff to cure ya!"

A welcome Awaits You At  
ACME DRUG, Inc.  
AND  
MAIN ST. DRUG, Inc.  
BURLINGTON, N. C.

COMPLETE OUTFITTERS FOR THE STUDENT

Sellers  
DEPARTMENT STORE

Burlington Born • Burlington Owned • Burlington Managed