

Players To Give 'Outward Bound' Second Time On Whitley's Stage

Playing for the last time to night, Wednesday, February 14, the Elon Players production of "Outward Bound" opened last night to an appreciative and receptive audience in Whitley Auditorium.

With only one more performance to be given, "Outward Bound" brings to the Elon stage a suspenseful drama of mysticism, final justice, enduring love and lost souls. The portrayal of a small group of people going into eternity grips the imagination of the audience, as the ship that is sailing both to heaven and hell carries them relentlessly onward, regardless of anything they do to halt it.

As the play opens, the ship is already at sea with its small list of passengers, but none of them notices anything strange about the voyage or surroundings, each being wrapped up in his own problems. An awareness of the situation creeps slowly into the consciousness of one passenger, Tom Prior, a proud young wastrel who cynically is tired of life; but he has difficulty in convincing the remaining passengers that they are all dead.

There are two mysterious lovers aboard, however, who seem to be at least half aware of what is going on, but they have no desire to be with anyone but each other, and they have a dread secret between them that forces them into silence.

The part of Tom Prior is played by Jerry Allen, and the two young lovers are portrayed by Rosamond Bromley and Nash Parker. Also aboard the ship are Mrs. Midget, an ignorant cockney charwoman, played by Betty Jean McLeod, who accepts her fate optimistically, knowing that she has led a good life; Mrs. Cliveden - Banks, haughty and snobbish society woman, who cannot realize the seriousness of the situation. Virginia Trigg portrays Mrs. Cliveden-Banks.

The mysterious steward, played by Bob Walker, the clergyman, Duke, by Dink Underhill, the pompous businessman who believes money can buy anything, even eternity, played by Lynn Cashion, and the Examiner, by Bob Wright, make up the remainder of the cast, which is turning in a performance that will make "Outward Bound" a high mark in Elon College dramatics.

MALE QUARTET TO APPEAR AT ELON



Members of the National Male Quartet and the accompanist for the group, which is scheduled to appear on the stage of Whitley Auditorium on Tuesday evening, February 27th, are shown above. The singers, who proved highly popular in an appearance here last season, will once more appear under the sponsorship of the Alamance Civic Music Association. Student activity tickets will be good for admission to this program.

Elon Music Club Plans Radio Work

The Elon College Music Club will offer the first of a series of four half-hour programs over Radio Station WFNS-FM at 8:30 o'clock Monday, February 19th. The other programs have been scheduled for March 19th, April 16th and May 7th.

The initial program next week features the second act of the acters include Annie Laurie Albright as Lady Harriett, Judy Ingram as Nancy, Jimmie Rhodes as Plunket, and Prof. William H. Struhs as Lionel.

Program Planned For French Club

The French Club held its February meeting on Tuesday evening, February 6th, at the home of Mrs. Pearl McDonald, and plans were made at that time for the next two meetings, which promise to make each meet a highly successful one.

The club voted to purchase new French song books to be used at the meetings. After the business session members were entertained by a movie entitled "Cyrano de Bergerac." The meeting ended with a brief social hour.

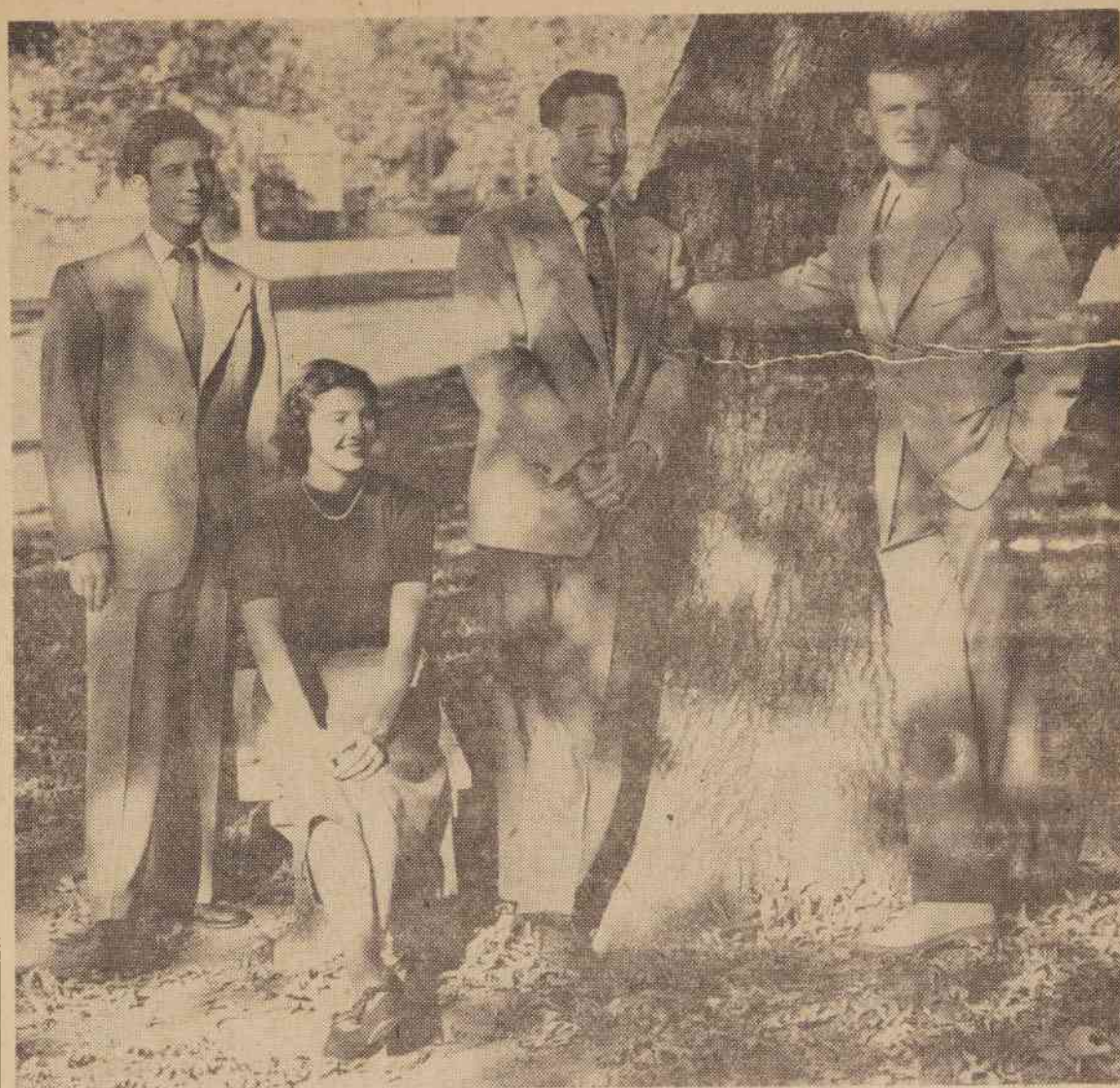
Elon Man's Art Work On Exhibit

The art work of one of Elon's graduates, Edwin Daniel, of Virginia, Va., and Washington, D. C., will be featured in the third art exhibit under sponsorship of the Fine Arts Department of the college. The exhibit, directed by Miss Lila Claire Newman, will open in the Music Room of Alamance Hall on Tuesday, February 20th, and continue for four days. It will be open from 9 until 12 o'clock each morning and from 7:30 until 9:30 on Wednesday evening.

Fifty-two pieces of work will be on display, all by Daniels, who graduated from Elon with the Class of 1946. He majored in art and business administration and made an excellent record here. A member of Alpha Pi Delta and Pi Gamma Mu and of Dr. Johnson's Literary Society, he was named to collegiate "Who's Who."

Since entering the Abbott School of Art in 1947, he has received several scholarships and awards and has written and illustrated two children's books, one of which is ready for the press. He attends school six months of the year and works as a bookkeeper for a tobacco buyer the other months. He is to graduate in June with a Bachelor's Degree in Fine Arts.

The exhibit, probably the most beautiful ever shown at Elon, consists of landscapes, seascapes, street scenes, portraits and illustrations in water color, charcoal, ink and pencil. His work portrays phases of both comedy and tragedy. Also included will be some commercial work.



THEY LEAD ELON SENIOR CLASS OF 1951

The officers who guide the destinies of the Senior Class of 1951 on the Elon campus are shown grouped about the historic "Senior Oak," which has served as an anchor and inspiration to so many generations of Elon students. The senior leaders in the picture (left to right) are Ray McKenzie, of Gibsonville, vice-president; Tossie Taylor, of Reidsville, secretary; Bob Oldham, of Erwin, president. President Fowler is no new hand at the executive post, for he has previously served as president of his class during his sophomore year, and last year he was president of the student body, the first to hold that post under the new campus constitution. Each of the other senior officers, too, has played a prominent part in campus life during the past four years.

Adult Night Classes Now In Progress

Dr. W. W. Sloan pointed to adult education as one of the answers to the present emergency as Elon opened its fifth series of adult night classes on Tuesday night of this week. These classes will continue four nights each week for the next twelve weeks.

He stated that any person over eighteen years of age is eligible for enrollment in these adult classes, regardless of whether they have a high school diploma or not. The courses may be taken with or without credit, such credit to be used toward a college degree or for renewal of teacher certificates.

The series opened last night with a course in adolescent psychology, by Prof. Gilbert Latham. Other courses are spoken Russian, by Dr. Konstantinos Avizonis, on Wednesdays; Shakespeare's plays, by Dr. James Howell, and educational history, by Prof. J. C. Colley, on Thursdays; and a New Testament course, by Dr. W. W. Sloan, on Friday nights.

'Bid Night' Pledges Are Made Public

Forty-nine pledges were announced by the four Elon fraternities and the four sororities, following mid-year "Bid Night" last weekend. The pledges are listed below, fraternities first and sororities next, each in alphabetical order:

ALPHA PI DELTA—Yono Mork, J. B. Pickard, Sammy Nelson, James Sykes, Murray Holland, Charles Phillips, Tom Faust, Charles Burrus, Tony Diamond, Leon Taylor, Elmer Thomas, Ken Thompson, Billy Hockaday, Bob Coyner.

LOTA TAU KAPPA—Curt Martin, Scott Quackenbush, Mike Moffo, Dwight Dillon, Ned Gaudin, Don Merriman.

KAPPA PSI NU—Sonny Addison, Hoyt Fowler, G. M. Wooten, Phillip Mann.

SIGMA PHI BETA—Marvin Moss, Parks Morgan, Harold Sadler, Joe Parker, Charlie Schrader, Pete Garber, Woody Stoffel, Buddy Ussery.

BETA OMICRON BETA—Christine Toumaras, Judith Ingram.

DELTA UPSILON KAPPA—Anne Abercrombie, Pat Gates, Betty Jean McLeod, Anne Matkins, Betty Peeler, L'acala Wilkins.

PI KAPPA TAU—Justyn Carter, Peggy Johnson, Patty Lambeth.

TAU ZETA PHI—Ernestine Bridges, Frances Moody, Dolly Westmoreland, Betty Sharpe, Virginia Jernigan.

'HIGH SCHOOL DAY'

(Continued From Page One)

Climaxing the "High School Day" program will be a varsity basketball game between Elon and Lenoir-Rhyne, which is scheduled for 8 o'clock. Half-time entertainment is to be furnished by students of the Physical Education Department.

Invitations for tomorrow's program were sent to high schools throughout this state and Virginia, and messages of acceptance have already been received from many of them. Sponsors of the program hope to equal or better last year's attendance of 1,000 high school seniors.

Cedric Foster, widely known radio commentator and authority on world affairs, addressed a large audience in Whitley Auditorium on Monday night of this week. Foster appeared under the auspices of the Burlington Chamber of Commerce and Merchants' Association.

CAGERS OF 1938

(Continued From Page Three)

head freshman coach at Duke University. Members of the squad, in addition to the three All-Conference members, were Ike Fesmire, John Causey, center, and Jim Abbitt, Ben Lillien and Claude Lawrence, guards.

Scores were not nearly so high in those pre-War years, but the three highest scorers for the season were Lloyd Whitley, 172 points; Hal Bradley, 167 points; and Ike Fesmire, 120 points. They fall far short of the individual leaders of the years since the War. For Elon's all-time and single-season scoring mark was set by Roney Cates, who tallied 457 points during the 1947 season.

SWIFT CLEANERS

Elon College

Minor Alterations—FREE

2-Hour Service — Upon Request

No Extra Charge

McGREGOR SPORTSWEAR

CURRIN & HAY

Men's and Students' Wear

Burlington

BOSTONIAN SHOES

COMPLETE OUTFITTERS FOR THE STUDENT

Sellars
DEPARTMENT STORE

Burlington Born • Burlington Owned • Burlington Managed

CREDIT — Work Done In — CREDIT
Our Own Shop

Burlington Optical Co.

112½ W. Front St.

Eyes Examined - Glasses Fitted

Broken Lens Duplicated
ONE-DAY SERVICE
Opposite Town Theatre

College Jewelry

Refreshments

Souvenirs

Dancing

College Bookstore

"Get The BOOKSTORE Habit"

EAT AT THE

ELON GRILL

STEAKS - HAMBURGERS
SANDWICHES



Brooks Student Store
Oklahoma A & M College
Stillwater, Oklahoma

Meeting the gang to discuss a quiz—a date with the campus queen—or just killing time between classes—Brooks Student Store at Stillwater, Oklahoma is one of the favorite gathering spots for students at Oklahoma A & M College. At Brooks Student Store, as in college campus haunts everywhere, a frosty bottle of Coca-Cola is always on hand for the pause that refreshes—Coke belongs.

5¢

Ask for it either way... both trade-marks mean the same thing.

BOTTLED UNDER AUTHORITY OF THE COCA-COLA COMPANY BY
BURLINGTON COCA-COLA BOTTLING COMPANY
© 1951, The Coca-Cola Company