

REID THIS!



One night I was walking past the water fountain by the library.

It had been a nice day. I'd snagged an above-par grade from Professor Barney in a literature quiz on a Colton Mather essay. I'd pitched a few firecrackers into trashcans in the old Post Office. And gotten away with it. I'd caught my girl in a romantic frame of mind earlier in the night. Elon was just the great old place, that's all.

Then I did something unusual. I went to the water fountain for a drink of water. It served better as a trysting place.

I saw Millie there. She was by herself.

I mashed the foot pedal on the fountain. I guess I'll always be sorry for that.

For one thing, the water tasted flat. Maybe that's why the fountain made a better meeting place. The water was terrible.

The thing I really regretted was seeing Millie cry.

"What'd he do? Poison the water for you too?" Tactful me.

The He, of course, was the guy Millie loved. I mean, if you saw Millie, you'd see this boy. She'd wait for him at the book store. She'd make up the difference when it came to the asking price of two movie tickets in Burlington. And quite often, taxi fare, too.

"I wish he had've," she said kind of childishly, but I got the idea she wasn't thinking much of the idea of living just then. "He's left me. It's for good, I know."

Sounds kind of silly, I suppose, all these years later—and even more trivial to you who weren't even there, much less not knowing this mere slip of a girl who had found more than her share of disappointments. Millie came to Elon from the orphanage on the far side of the campus.

Well, I gave her a shoulder to cry on.

That's about all any of us can do for a broken heart. I could hardly be a substitute for a Mama she never remembered. I wouldn't have made a very good Big Brother and poked somebody in the nose for hurting Millie the way she'd been.

Usually, these columns grind down with a tricky ending and maybe a chortle. This one won't. It started out well enough, but we don't always get to put the finishing touches on things the way we'd like. Little unhappy Millie taught me that.

You know, all of us cry at one time or another in some way.

When it happens to you, don't you ever forget that there are some who must cry alone.

HERE AND THERE

(Continued from Page Two)

Members of the senior class have something to look forward to after Christmas vacation. Graduate record examinations. Boy, is yours truly dreading them? He is! They're just one of those necessary evils that are necessary; there I go repeating myself again, to get through dear ole' Elon.

I'm getting tired of trying to think of something else to write, so let's wrap it up for this edition. However, before we put the old writing machine away, let "Here 'n There" remind all you fine people to be careful on the way home.

And now, from yours truly and "Here 'n There", a very, very Merry Christmas to one and all. Sure hope ole' Santa is real good to all of you. See you next year.

Lanky Dee Atkinson sank 523 free throws in 129 games while playing basketball for Elon four years and holds the all-time Elon career record from the free-throw line.

WAA Is Host At Yule Party

The Women's Athletic Association entertained about 75 guests at its annual Christmas Party, which was held in the McEwen Banquet Hall on Wednesday afternoon, December 10th, when Christmas music, delicious refreshments, presentation of door prizes and taking of the WAA's picture for the annual were features.

Against a background of beautiful Yule decorations, refreshments were served by Martha Brittle, Penny Fuqua, Barbara Kennedy, Frances Clark, Janice Stanley and Peggy Queen. Janice Cook was at the piano, and Katie Langley registered guests for the door prizes.

Students Play Santa Claus For Children

The students of Elon College played Santa Claus on Tuesday night for the seventy boys and girls at the Congregational Christian Home for Children, the occasion being the students' twelfth annual Christmas party for the youngsters.

The party custom was initiated in 1947 under sponsorship of Alpha Pi Delta Fraternity, with the other Greek letter fraternities and sororities cooperating with the sponsoring group in providing gifts for all the youthful guests. The other groups have continued this cooperation and did so this year.

Jimmy Humphrey, as a representative of Alpha Pi Delta, served as chairman in charge of this 1958 party, which was held in the banquet room of McEwen Memorial Dining Hall, and expressed pleasure that so many of the Elon students participated in the "adoption" of one of the Children's Home guests for the occasion.

Other than Alpha Pi Delta, other participating groups were Iota Tau Kappa, Kappa Psi Nu and Sigma Phi Beta Fraternities and the Beta Omicron Beta, Delta Upsilon Kappa, Pi Kappa Tau and Tau Zeta Phi sororities.

SPORTS SHOTS

(Continued From Page Three)

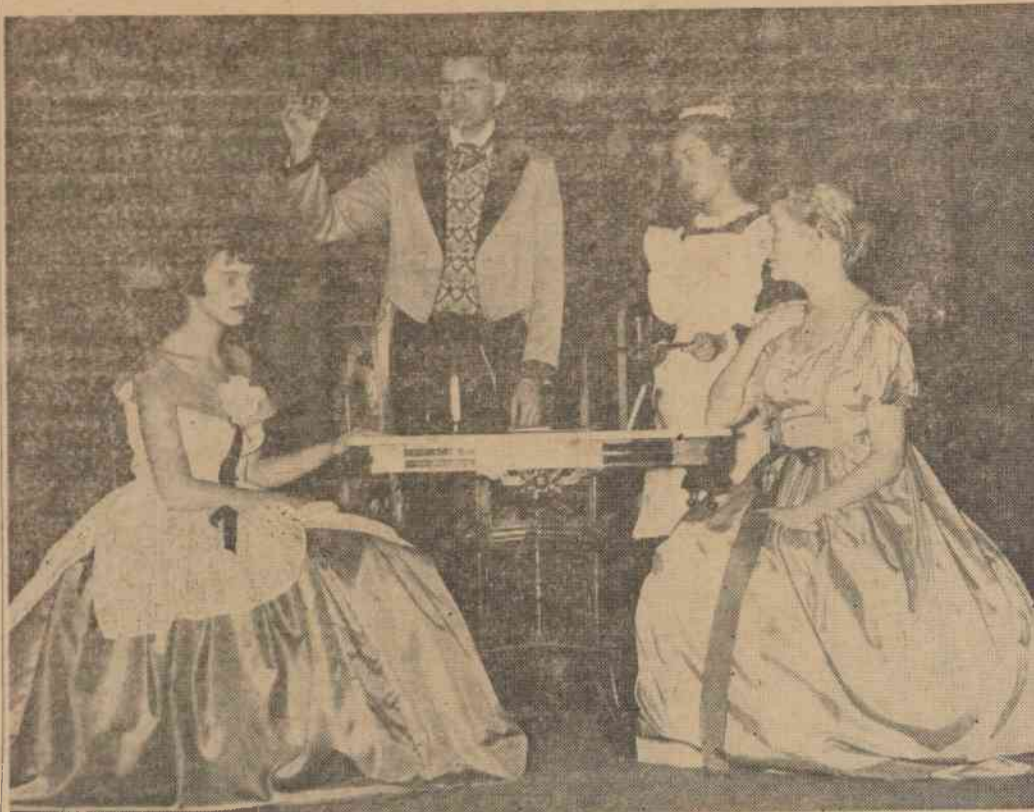
Additional congrats also go to Bob McLean, counterpart of Joe DeGais in Elon's halfback combination, for being awarded as Elon's "Player With Most Desire" honors. This award was presented the Burlington Touchdown Club banquet by Coach Jim Tatum, of the University of North Carolina. No question about it, Bob, who is a junior, was all desire and very deserving of the honor.

With the seasonal metamorphosis going on about us — the bare trees, the cold weather and the heavy overcoats — campus sports are also making a change from outdoors to indoors, from the prolate-shaped ball to the round-ball sport. Basketball is indeed here, but it's much too early to tell how things are shaping up for the Christian cagers and for the Conference as a whole.

Coach Doc Mathis has already indicated the probable starting line-up for most of the early games, including Eddie Burke, 6-6, teamed with Rob Bell, 6-4, at the forwards; Tony Carcaterra, 6-4, at center; and Gil Watts, 6-0, and C. G. Hall, 5-8, at the guards. Several of the younger players have shown well, and the Christians may have more reserve strength than last year, with a possibility that some of the newcomers may break into the starting line-up. It would seem that Elon's cagers should be an improved club from last year.

In the Conference, it appears that Lenoir Rhyne, defending the championships it has won the last two years, has an edge; but High Point returns with tall Danny Sewell and three other starters from last year's second-place outfit; and one must not discount the loop's oldest club, the Western Carolina Catamounts, which has all of its starters back as an intact unit.

BEAUTIFUL COSTUMING IS FEATURE OF PLAYER SHOW



Illustrating the beautifully designed costuming, typical of America of the 1850's, is the scene above from the Elon Player presentation of "The Heiress," which proved highly pleasing to campus theatre-goers when it was given in Mooney Chapel Theatre on Wednesday, Thursday and Friday nights of last week. Shown left to right in the picture are Rosanna Gant, as Catherine Sloper; Prof. Roy Epperson, as Dr. Austin Sloper; Pat White, as Maria, the maid; and Etta Britt, as Lavinia Penniman, the fluttery aunt.

Elon Players Praised For Production Of 'The Heiress' In Mooney Theatre

Living up to the old adage that "the show must go on," the Elon Players defied the snow and hazardous highway conditions in presenting magnificent performances of "The Heiress," a Broadway tragic-drama, in Mooney Chapel Theatre for three nights last week.

The final performance last Friday night drew a goodly audience, including both students and lovers of the drama from the surrounding area, and those who braved the weather to see it were rewarded for their attendance by one of the finest Play productions of recent years.

Rosanna Gant, freshman actress from Burlington, scored a distinct triumph in her first major role with the student stage group and gave a performance that was definitely professional in calibre as she played the title role of Catherine Sloper, the New York heiress, who was balked by her domineering father in her quest for romance.

Alternately lifted to the heights by her moments of love with her fortune-seeking suitor and plunged to the depths by the interference of her implacable father, she met each situation in almost flawless style. Veteran Elon Player fans

called her performance one of the finest in campus stage annals.

Prof. Roy Epperson, in the role of Dr. Austin Sloper, the domineering father, and Chuck Oakley, veteran student actor from Roxboro, who appeared as Morris Townsend, the self-seeking suitor, also gave outstanding performances and did much to keep the audience interest at high pitch.

Praise is also due to members of the supporting cast, including Etta Britt, as Lavinia Penniman; Pat White, as Maria, the maid; Pattie Fayle, as Elizabeth Almond; Peggy Roach, as Marian Almond; Ikey Tarleton, as Mrs. Montgomery; and Joe Medlock, as Arthur Townsend. All are from Burlington, except Miss Tarleton and Medlock, who are from Durham and Tobacoville respectively.

Much credit for the success of the play is also due to the excellent direction by Prof. Clyde McCants and to the work of the back-stage crew that included Angie Chambless, David Horn, Wayne Rudisill, William Bane, Sylvia Sims, Gary Newman, Bobby Bennett, Dianne Harris, Chris Fayle and Danielle Webster.

Benefits From Student Insurance Plan Listed

Calling attention of the students to the insurance benefits that are theirs under the college's current plan, President J. E. Danieley and Business Manager W. E. Butler have just issued a statement to cite the provisions of the insurance coverage that goes to every student upon registration.

The 1958-59 student coverage provides blanket medical expense up to \$1,000, with payment possible for specified expenses within 52 weeks after the accident in which the student is injured. There is a \$100 limit on dental expenses. Also provided is sickness hospital room and board expense up to \$11 per day, miscellaneous expense allowance up to \$100, and surgical treatment up to a maximum of \$300.

The services described in the pamphlet are effective twenty-four hours a day for the entire policy period between September 3, 1958 and June 1, 1959. It is furthermore pointed out that these benefits are paid in addition to any benefits to which a student may be entitled under any personal policy he or she may hold and that the plan covers all accidents, whether sustained at school,

at home or while travelling between school and home.

As is the case with most policies, there are certain exclusions, such as injuries or illness sustained by air travel in any except regularly scheduled planes, the cost of eyeglasses or elective treatments and preventive medicines, losses caused by war, injuries sustained while entitled to benefits under Workmen's Compensation or injuries and illnesses sustained prior to issuance of the policy.

A complete description of the plan is found in a small pamphlet that students may secure from the college business office. Included in the pamphlet is a statement from Dr. Danieley, in which he expresses pleasure that Elon can thus protect its students against unexpected medical expenses.

Dean's List

(Continued From Page One)

dith, Ikey Tarleton, Rex Thomas, Edmund Thompson, Mary Thompson, William Troutman, J. C. Turner, Teresa Turney, Henry Tutt, Albert Von Doenhoff, Steve Wall,

Faye Weaver, Richard Whittenton, Harriett Wicker, Edward Wilkes, Thomas Wilkins, Edward Wilson, Robert Worthington, Joseph Wrenn and Sally Wright.

Arts Forum Allotment Subject Of Hot Debate

The Elon Student Legislature was the scene of some of the hottest debates and discussion in its history in two meetings held just prior to Thanksgiving holidays, the subject being the appropriation of funds for operation of the Elon College Liberal Arts Forum.

The forum itself was proposed and adopted by the legislature in October, with a plan to invite to the campus outstanding speakers in the humanities field. The plan was to be administered by a joint committee of faculty and student representatives; but there was delay in starting the program, pending allotment of funds.

The heated debates had their beginning at a regular Legislature meeting on November 12th, when a bill was introduced to appropriate \$1,000 from the student body funds to pay for a series of four speakers and for incidental expenses of the Forum itself.

Proponents of the bill asked that the money be allotted from a fund of \$3,000 that had previously been allotted for dance expenses this year, and this brought hot discussion on the question of how much should be spent on campus dances, with discussion of the relative values of the forum programs and the dances.

After the legislature had amended the minutes of a meeting held last May, changing the "Dance" funds to a "Miscellaneous" category, the Student Legislature allotted the desired \$1,000 for the Forum programs.

The discussion was resumed at a called meeting the following night, when the debate was renewed on the Arts Forum appropriation. On this occasion the Legislature rescinded the bill enacted the previous night and also restored the minutes of the May

Home Ec Meet On December 9

A program on Christmas decorations featured the December meeting of the Home Economics Club, which was held in the Home Ec Lounge on the third floor of Alamanco on Tuesday, December 9th, with Loretta Hilliard, Eula Mae Norton and Helen Garner presenting an interesting discussion.

In addition to Mrs. Mary G. Butler, club advisor, there were ten members present for the meeting that was presided over by Elizabeth Shoffner. Projects for the future were discussed, and a finance committee named, including Marie Vickers, Nancy Smith and Carol Adams.

14th meeting to their original form.

After much discussion, a second bill was passed for support of the Liberal Arts Forum, that time allotting \$500 for the series of programs. However, the passage was nullified by a veto from the Student Body president.

This action left the Elon College Liberal Arts Forum in existence, in keeping with the original bill which had been passed in October, but it remained a group without funds. Further plans for the group may be announced at a later date.

Don Haitheox, a 6-8 center who graduated in 1952, holds the Elon single-season scoring record. He hit 607 points during his senior year and is the only Elon player ever to top the 600-point mark in a season.

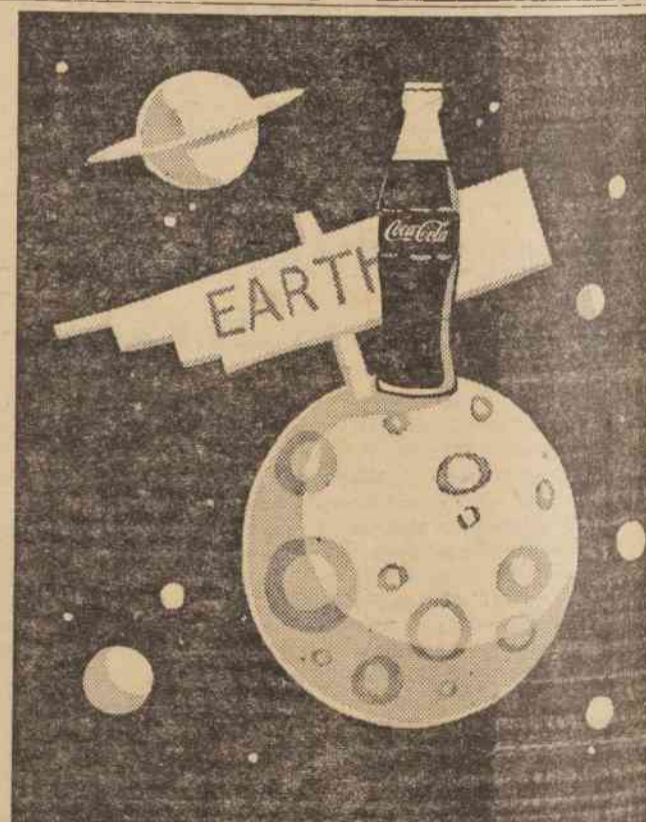
"GET the BOOKSTORE Habit"

College Bookstore

Souvenirs

College Jewelry

Refreshments



Out of this world!

Space travelers—be on the alert! Make sure there's a cargo of Coke tucked away in the rocket! You may not be able to buy your favorite sparkling drink on the moon . . . but that's just about the only place you can't. So when you're ready for the big lift, be sure the cheerful lift of Coca-Cola goes along!



SIGN OF GOOD TASTE

Bottled under authority of The Coca-Cola Company by BURLINGTON COCA-COLA BOTTLING COMPANY