

Elon Quint Will Host Pfeiffer In Cage Opener Next Week

Clements Is Now Rushing Pace-Setter

Burle Clements, hard-driving fullback, moved into the pace-setter post as Elon's leader in lugging the ball after nine games of the 1960 season, for the rugged sophomore proved a big threat against Lenoir Rhyne to run his total rushing for the season to 253 net yards.

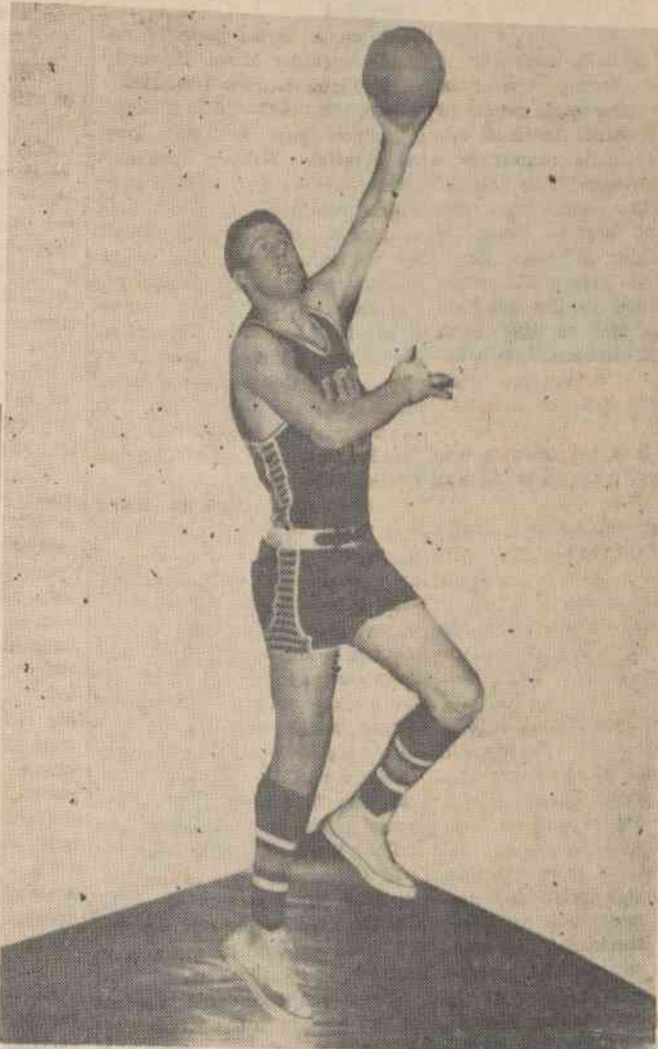
George Wooten with 225 yards and Ken Cooke with 218 yards are two other Christian backs who have passed the 200-yard mark in rushing, while Jim Short and Marvin Crowder are pushing close to that magic double-century figure with 195 and 183 yards each. Cooke continued to lead in average per carry, having carried for 5.5 yards each time he lugged the ball.

Wooten, who turned in his best work on defense against the Bears, added enough yards in rushing and passing to push his total offense figure for the season to 605 yards, including 380 passing yards on 32 completions in 94 attempts. The 605-yard total kept the Christian quarterback near the top in the North State Conference total offense columns.

John Gozjack, the versatile sophomore who plays end on offense and halfback on defense and does most of the Elon punting, did not play against Lenoir Rhyne due to injuries, but he continued to lead the Christians at the nine-game mark in pass receiving with 8 catches and in punting with a 37-yard average on 32 kicks.

While sparkling on defense against Lenoir Rhyne, Wooten grabbed two enemy passes in the Elon end zone and ran his total interceptions for the season to five, just one short of the all-time Elon record set by Whitney Bradham in 1956. Wooten also held to his lead in punt returns, having run back nine kicks for 211 yards. Marvin Crowder is tops in kick-off returns, having lugged back nine boots for 165 yards. Dean Yates still tops the squad in fumble recoveries with three.

THEY WILL LEAD CHRISTIAN CAGE SQUAD THIS SEASON



CAPTAIN KEN SMITH, FORWARD



CO-CAPTAIN EDDIE BURKE, CENTER

Ken Smith, a 6-4 junior forward from Edmonton, Ky., will captain the Elon College basketball squad during the coming 1960-61 cage campaign; with Eddie Burke, a 6-6 senior center from Burlington, serving as co-captain. The two big boys lead a team which will be built around a nucleus of seven lettermen.

As Season Nears ...

Meet Christian Cagers

With football gone from the stage and with King Basketball due to take over the center of interest on the Elon campus within the next ten days, it is well that the Elon faculty, students and fans get acquainted with the boys who will carry Fighting Christian colors on the hardwood this winter.

Coach Bill Miller, who begins his second season as head cagermentor for the Christians, has a fine group of cage candidates, and pre-season indications are that the Maroon and Gold basketballers should be much improved over the aggregation of last year.

Practice has been underway since mid-October, and at the present time the Fighting Christian squad has been cut down to fourteen boys, who will carry Elon hopes in a rugged campaign ahead. Seven of the group are lettermen from last year, one is a junior college transfer, and six are freshmen. The individual players are presented in the following brief sketches, arranged in alphabetical order:

DEWEY ANDREW — Andrew, who hails from neighboring Snow Camp, is a 6-6 sophomore letterman, who displayed marked ability at center last season. The big boy, who played his high school ball at Eli Whitney, scored 74 points in reserve service in 16 games last winter.

MAC BOWMAN — Bowman is a 6-1 freshman guard from Burlington, who played his high school ball at Pleasant Grove High School, being one of the finest floor men and scoring threats in the county's high school circuit last winter.

JESSE BRANSON — Branson, a freshman center and forward, towers 6 feet 7 inches, and that height should be a tremendous asset to the youngster from E. M. Holt High School. The big boys showed fine ability in pre-season scrimmages with Camp Lejeune and Catawba, and he may see heavy duty around the basket for the Christians this winter.

EDDIE BURKE — Burke, who is from Burlington and is a product of Williams High School, where he was All-State, is a 6-6 senior center who tallied 137 points in 17 games last winter. He had led the Christians in scoring the previous season. Burke is also a fine track man, having won the

North State Conference title in both hurdles last spring.

PHIL CHEEK — Cheek, a 6-2 freshman guard, comes to Elon from Asheboro, where he was an outstanding basketball guard and baseball catcher. He possesses good speed and is an excellent ball-handler, and he could see much service this winter.

RICHARD CONATSER — Conatser, a speedy sophomore guard, who hails from Burnside, Ky., and who led the Christian scoring as a freshman last winter. He hit for 404 points in 28 games, setting a new freshman record for scoring

(Continued on Page Four)

Christians Face Tough Schedule Of 30 Games

The Elon College basketball squad, with prospects for a much stronger aggregation that that which won nine of twenty-six games last season, will open its 1960-61 campaign by meeting the Pfeiffer basketballers on the new and highly polished floor of Alumni Memorial Gymnasium here next Wednesday, November 30th.

The opening schedule, which will mass ten rugged battles in the pre-holiday interval between Thanksgiving and Christmas, and five of the early-season contests will be played on the home court.

Early battles for the Christians' home supporters, in addition to the opener with Pfeiffer, will bring the Wofford Terriers here on December 7th, followed by Guilford on December 12th, Pembroke on December 15th and the powerful Camp Lejeune Marines on December 16th.

After meeting Pfeiffer here next Wednesday, the Christians get one day of rest and then trek southward into South Carolina for weekend meetings with Wofford and Erskine on foreign floors on Friday and Saturday, December 2nd and 3rd.

The Christians will also face Lenoir Rhyne in Hickory and Belmont Abbey in Belmont in other games on enemy floors and will wind up pre-Christmas action by facing the sharpshooting outfit from William and Mary's Norfolk Division in a Kiwanis-sponsored tilt in Suffolk, Va., on December 19th.

There will be a short break for Christmas, but Coach Bill Miller will bring his squad back to the campus immediately afterward to

Baseball Schedule

- Nov. 30—Pfeiffer, home.
- Dec. 2—Wofford, away.
- Dec. 3—Erskine, away.
- Dec. 7—Wofford, home.
- Dec. 10—Belmont Abbey, away.
- Dec. 12—Guilford, home.
- Dec. 14—Lenoir Rhyne, away.
- Dec. 15—Pembroke, home.
- Dec. 16—Camp Lejeune, home.
- Dec. 19—Norfolk Division, at Suffolk, Va.
- Dec. 28-30—Lejeune Tourney.
- Jan. 5—Pembroke, away.
- Jan. 7—East Carolina, home.
- Jan. 9—Appalachian, home.
- Jan. 11—A.C.C., away.
- Jan. 14—Catawba, away.
- Jan. 16—High Point, home.
- Jan. 28—Catawba, home.
- Jan. 30—Pfeiffer, away.
- Feb. 1—High Point, away.
- Feb. 4—West Carolina, away.
- Feb. 6—A.C.C., home.
- Feb. 8—Appalachian, away.
- Feb. 10—Erskine, home.
- Feb. 11—East Carolina, away.
- Feb. 13—Camp Lejeune, away.
- Feb. 16—Lenoir Rhyne, home.
- Feb. 18—Guilford, away.
- Feb. 22-26—North State Tournament.

participate in the annual Camp Lejeune Holiday Tournament, which has been set for Wednesday, Thursday and Friday, December 28th, 29th and 30th. This tournament will serve as a final tune-up before the Maroon and Gold tossers swing into the heart of their campaign, which concludes in late February with the annual North State Tournament in Lexington.

Lenoir Rhyne Is Winner As Elon Defense Shines

The Lenoir Rhyne Bears, rated Number One among America's small college football teams, invaded Elon's stronghold on Saturday night, November 12th, and returned home with a 14 to 0 victory, but the honors quite clearly went to a fighting crew of gold-

jerseyed Christians who four times stopped the mighty Bears in the shadow of the Elon goal posts.

The Bears had rolled for big scores in a number of games this season, and Coach Clarence Stasavich needed another big score to assure continued rating at the top of the small-college standings, but a stubborn squad of Elon grid-ders denied him the pleasure of that adding-machine score.

HOW IT HAPPENED

Elon	Lenoir Rhyne	
9	First Downs	16
157	Yards Gain Rushing	309
14	Yards Lost Rushing	35
143	Net Yards Rushing	274
14	Passes Attempted	15
4	Passes Completed	4
18	Yards Gain Passing	72
161	Total Yards Scrimmage	346
3	Opp. Passes Intercepted	3
19	Runback Int. Passes	43
7	Number Punts	3
36.0	Ave. Yards Punts	34.7
60	Runback All Kicks	28
3	Fumbles Lost	3
30	Yards Penalties	35

Score By Periods:
Elon 0 0 0 0—0
Lenoir Rhyne 7 7 0 0—14
Lenoir Rhyne Touchdowns — McClamrock (S-run), Kemp (1-run). Extra Points — Kirby 2 (kicks).

In fact, the score could have been closer and conceivably could have gone the other way entirely, for the Elon grid-ders clearly donated one of the two Bruin TD's and missed one of their own by less than a yard and by dint of a questionable ruling. In retrospect, it was Elon's night!

Rated the favorite in pre-game prophecies by from four to six touchdowns, the Bears escaped by the skin of their teeth and must be in a mood to give thanks at the approaching Thanksgiving holiday. It is true that the Bears piled up mighty figures in yardage, but

(Continued on Page Four)

FOUR SENIORS END CAREERS



TONY MARKOSKY



DON SZYDLIK



BOB OVERTON



JIM McCLURE

Four seniors on the Elon football squad have finished their careers as the 1960 season came to an end. They are Co-Captain Tony Markosky, end from Mahanoy City, Pa.; Don Szydlak, tackle from Natrona, Pa.; Bob Overton, fullback from West Hempstead, N. Y.; and Jim McClure, guard from Brackenridge, Pa. All started the season as regulars, but Overton and McClure have been handicapped by injuries and missed action through much of the schedule.

The wind changes its course, and the tides turn in the opposite direction, and this seems to be the way with sports. Seemingly before one knows it, he is sitting in a warm gymnasium cheering for a basketball team instead of sitting in cold outdoor stands cheering for a football team.

Such is the case here at Elon, for another season of football has come to an end until another year. It is sad to note, however, that for some there will be no other year, for some of the players have played their final game, and some have watched their last game as students since they graduate before another season.

For many the thought of graduation is joyous, but to others it brings sorrow and a pain in the heart, a pain which they scarcely realize yet, for football has long played an important part in their life, and it hardly seems possible that they have played or cheered their last game.

One thing is certain, however, all who participated this year were on a team which has improved the current Elon gridiron rating. The Elon team of 1960 was one which improved tremendously from the first of the season until the end and one which showed up better than those of the past two seasons.

It is true that no championship was, but both players and students can look forward to a still better season a year from now. This year saw many changes, with a new coach and a new system of play, but the development was very evident. Who knows, next season might bring a title to Elon's campus.

There was a lack of experience, for most of the returning veterans were only sophomores or juniors, and many new players joined the team right out of high school, which meant that they had much to learn. Those players should surely feel that they have learned much and that come another season they can do much better.

(Continued on Page Four)