

Elon Topples Guilford 15 To 6 In Annual Grid Tilt



Spotlighting The Fighting Christians

By TOM CORBITT

Predicting football conference standings is a dangerous game. Therefore the so-called "experts," the sports writers, are reluctant to make positive statements, else they lose their expert status in a flurry of upsets.

After the Atlantic Coast Conference action of September 19th, Smith Barrier, Sports Editor of the Greensboro Daily News, proclaimed that he might do well to turn his prediction of two weeks earlier upside down, and in our own Carolinas Conference the experts are not in complete agreement in the predictions for the season.

Pre-Season Predictions
Jack Horner, of the Durham Herald in Street and Smith's "Football Year Book" lists Elon in the spot in the Carolinas Conference, followed by Appalachian, Catawba, Lenoir Rhyne, Western Carolina, Newberry, and Guilford in that order. Horner notes, however, that "the Christians are sure to receive keen competition." At the same time, Horner suggests "if Wheless picks up where he left off, Elon will be a shoo-in."

Herman Hickman, of the Winston-Salem Journal, after attending practice sessions at all the conference schools, liked the attitude of the Bears of Lenoir Rhyne and on September 19th picked LR to win the Carolinas Conference. That night LR opened its 1964 season with a 17-0 loss to Wofford, its first loss to the South Carolina school since 1957. Hickman made the interesting assumption that "Elon's weakness may be over confidence."

Moses Crutchfield, an associate sports editor of the Daily News and an Elon alumnus, suggests Elon must be regarded as "the No. 1 contender for this year's championship." Crutchfield made this observation after seeing all the conference teams.

In pre-season interview of this subject, Coach Tucker would acknowledge little and concede nothing. The Christian coach said then that "we are good enough to beat anybody on our schedule, but we also have enough weaknesses that we can lose every game we play."

After viewing the Emory and Henry game, Coach Tucker called the Christians' performance "the best opener for us in five years," and felt "we have never been this far along offensively and defensively at this stage of the season."

According to Tucker, the Emory and Henry win "put the team over a big hurdle."

However, he still viewed the game with his pre-season feeling of "cautious optimism." "The team showed enough strength to carry us all the way, but we showed enough mistakes to be beat."

Strong Defenders
Following a study of the Emory and Henry game films, Tucker and his staff were more impressed with the Elon defensive effort than with the Christians' offensive showing; and it may well be that the success of the Christians' bid for the Carolinas Conference championship will depend on the Christian defensive team.

The defensive unit lists Jerry Rowe and A. W. McGee at ends; Tommy Mitchell, Morris Thomas, and Joe Robinson at the tackle slots; Darrell Morgan, Randy Warren, Zack Broadway, Larry Smith, and Ray Wilson, at the guard positions; Scott Crabtree and Joe Dawson at the linebacker posts; and H. L. Robinson, Lamar Clark and Sonny Pruette in the secondary defense.

Even though Wheless completed 9 of 16 passes for 122 yards and two touchdowns, the Elon passing in the Emory and Henry game was "not up to par" with the Christians' showing in their last two games last fall. This, say Coach Tucker, may be attributed to muddy field conditions at Bristol and to timing, always present in the first football game of the season.

Tucker did note that Ed Wheless, Fred Stewart, Clayton Johnson, Rex Harrison, and Pete Jarvis did a tremendous job on offense and described both the offensive and defensive line play as "exceptional." Elon is blessed this season with perhaps the finest crop of freshmen in the history of the school, and several of these newcomers will see much service before the season closes.

Apps Next Foe
Tomorrow night the Fighting Christians will meet Appalachian at Boone. Coach Tucker has adequately called this game "our biggest stumbling block."

The Mountaineers, who are picked by many to win the conference championship, opened their season September 19th with a decisive 20-6 victory over Newberry.

Last year Elon downed Appalachian 16-13 at Burlington. Prior to that victory Elon had dropped five straight to Appalachian, including a 27-12 thrashing in 1962 as the Mountaineers dedicated their beautiful, new 10,000-seat stadium.

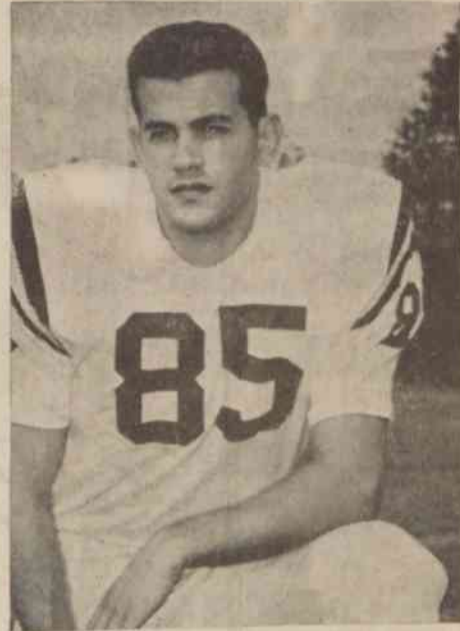
In past years Appalachian has always passed a lot and featured a strong wide running game. The Apps are also known for their strong defense, and Coach Tucker feels the Christians will need to score three touchdowns to win.

Tomorrow night will answer a lot of questions about our football team this year, and could well decide the conference championship. The answers will be found tomorrow night not in the words of the "experts," but in the hearts of the Elon College Fighting Christians of 1964.

With the 40-7 victory over Lenoir Rhyne last November, there appears to have started a renaissance of school spirit on campus, and it has been truly good to see it.

(Continued on Page Four)

SENIOR STARS LEAD CHRISTIAN GRID SQUAD



Clayton Johnson, shown left, a fleet-footed senior halfback from Asheboro, and Jerry Rowe, shown right, a rugged senior end from Asheboro, are co-captains for the Fighting Christian gridgers who got away to a fine start on their 1964 football campaign as they defeated the Emory and Henry Wasps at Bristol, Va., in the opener and then added a victory over the Guilford Quakers at Guilford in the second battle of the campaign. Johnson, who is playing his fourth year in an Elon football uniform, grabbed a pass from Ed Wheless and scored the first touchdown of the new campaign in the battle against Emory and Henry. In addition to his football, Johnson is also a fine sprinter with the Christian track squad. Rowe, who won high school All-American honors at Asheboro High, played freshman ball at Carolina and then transferred to Elon, where he won his first letter at end last fall.

Wheless Tosses For Two Scores As Christians Top Wasps 14 To 6

By TOM CORBITT

The Fighting Christian gridgers avenged three consecutive losses to an old foe when they opened their 1964 gridiron campaign with a 14-6 victory over the Wasps of Emory and Henry College at Bristol, Tenn., on Saturday night, September 19th. Elon scored early in the first quarter, marching 76 yards in fifteen plays after stopping the Wasps on a fourth-and-one play on the Elon 23 yard line, and after that early score the Christians were never to be caught.

The Elon defense provided the key to victory, halting three Emory and Henry drives in Elon territory and setting up the Christians' second touchdown with the recovery of a Wasp fumble of an Elon punt in the fourth quarter.

Quarterback Ed Wheless led the fielding offense. Wheless completed 9 of 16 passes for 122 yards and two touchdowns, but he received able aid on the ground.

Wheless had his best game at Elon in driving for 71 yards on 14 carries.

HOW IT HAPPENED	
E.	H.
13	10
160	115
17	42
115	73
16	14
1	8
122	76
277	149
0	0
6	4
34.2	37.0
15	100
0	1
70	5

SCORE BY PERIODS	
E.	H.
7	0
0	6
0	0
7	0
14	6

Elon Touchdowns — Johnson (5 — pass from Wheless), Jarvis (28 — pass from Wheless). Extra Points — Ferrell (2 — placement). Emory and Henry Touchdown — Arnold (11 — pass from Bales).

Clayton Johnson was equally as impressive at the left halfback position. Johnson was on the receiving end of a 5-yard touchdown pass from Wheless and the senior captain also galloped 21 yards for the longest Christian run of the day.

At the end positions, Rex Harrison and Pete Jarvis also played sterling games. Harrison caught four passes for 50 yards, while Jarvis had two catches for 42 yards, one of which was a 28-yard touchdown throw from Wheless.

After receiving the opening kick off, Elon failed to move the ball and was forced to punt. Timmy Sarver returned Joe Dawson's punt 33 yards for Emory and Henry to the Elon thirty-two. Four plays later the Christians regained the ball on downs and were touchdown bound.

Starting from the 24-yard line, Fred Stewart swept for 6 yards for the Elon first down, and then on first-and-ten Wheless threw to Rex Harrison for 13 yards and another Elon first down to the Elon forty-eight. Burnette plunged for two Wheless fumbled but gained a yard and Doug Amick drove for six. On fourth down from the Wasp forty-three, Wheless got the first down on a 4-yard keeper play.

After Johnson carried for two, Stewart slanted off tackle for eight and another first down. Wheless then hit Jarvis for a 14-yard gain to the Emory and Henry fourteen.

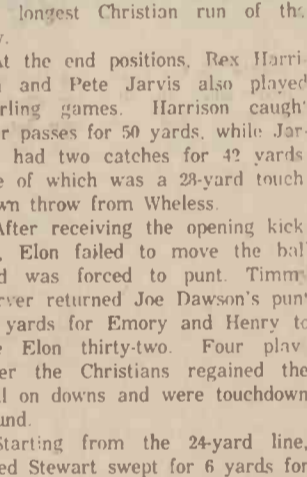
Stewart carried for 5 yards and Johnson gained four more, but the Wasp defense tightened, and Amick lost a yard. On fourth down Wheless hit Clayton Johnson over the middle for the score. Bobby Ferrell added the conversion to put Elon in front 7-0.

Emory and Henry followed the Elon touchdown with a long march downfield from the Wasp 30-yard line but lost the ball on downs to the rugged Elon defense on the Christian two. The Christians were unable to move the ball and were forced to punt from the end zone. Gary Anderson returned to the Elon 40, and from there the Wasps marched for their only score. Ron Bales passed 11 yards to Gary Arnold for the touchdown, but a pass attempt for two points failed, leaving Elon ahead 7-6.

The Christians marched right back with a drive of their own, but lost the ball on downs at the one as the half ended. The Elon drive featured a 21-yard run by Clayton Johnson, a 15-yard run and a 10-yard pass reception by Fred Stewart, and an 11-yard pass to Rex Harrison.

JARVIS GETS ELON TOUCHDOWN

Pete Jarvis (number 80 in white jersey) is shown above as he grabbed the ball on a pass from Ed Wheless for the first Elon touchdown in the Christians' 15 to 6 victory over Guilford. The Elon end grabbed the ball in the end zone almost from the snatching hands of a Quaker defender.



Pete Jarvis (number 80 in white jersey) is shown above as he grabbed the ball on a pass from Ed Wheless for the first Elon touchdown in the Christians' 15 to 6 victory over Guilford. The Elon end grabbed the ball in the end zone almost from the snatching hands of a Quaker defender.

Pruette Races 83 Yards For Clinching Touchdown

The Elon Christians had to overcome their own miscues as well as the traditionally stubborn Guilford defense as they turned back the Guilford gridgers 15 to 6 in a Carolinas Conference football battle on the Guilford field last Saturday afternoon, September 26th. The victory, which was Elon's second in two games this season and their first in the Carolinas Conference race, was the twenty-eighth triumph for the Christians in a traditional rivalry that dates back to 1919. Elon has now won 28, lost 11 and tied three in the annual battles with Guilford.

HOW IT HAPPENED	
Elon	Guilford
11	6
232	47
17	7
115	40
16	31
8	9
86	71
3	1
72	47
7	7
41.0	36.3
34	64
1	0
111	64

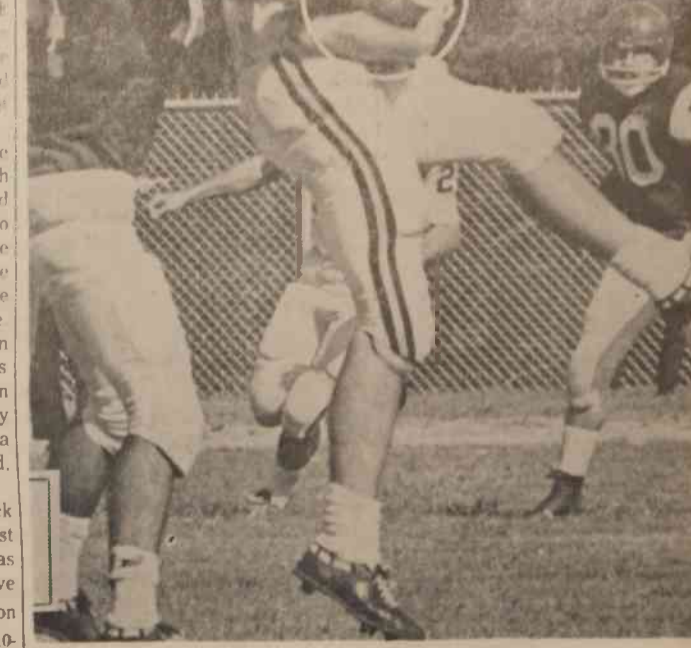
SCORE BY PERIODS:	
Elon	Guilford
0	0
7	0
0	6
0	0
15	6

Sonny Pruette got the Elon drive off flying with a 14-yard sprint at end, and Ed Wheless passed to Rex Harrison for 14 added yards. Then Wheless spotted Pete Jarvis inside the end zone and whiplashed a pass to the lanky end for an Elon TD. Bobby Ferrell booted the extra point, and Elon was ahead for keeps at 7 to 6 with 7:47 left in the half.

A pass interception by Lamar Clark carried Elon to the Guilford twenty early in the third period, and another interception by Guilford's Fred Palmore then set a Guilford threat. Palmore intercepted the Wheless heave and raced to the Elon eight before Rex Harrison ran him down. The Elon defense held, and Ernie Vaderson's try for a field goal for Guilford was wide.

The Christians were backed up deep at that time, but an exchange of punts gave Elon the ball on her seventeen after four minutes of the final period, and it was from there

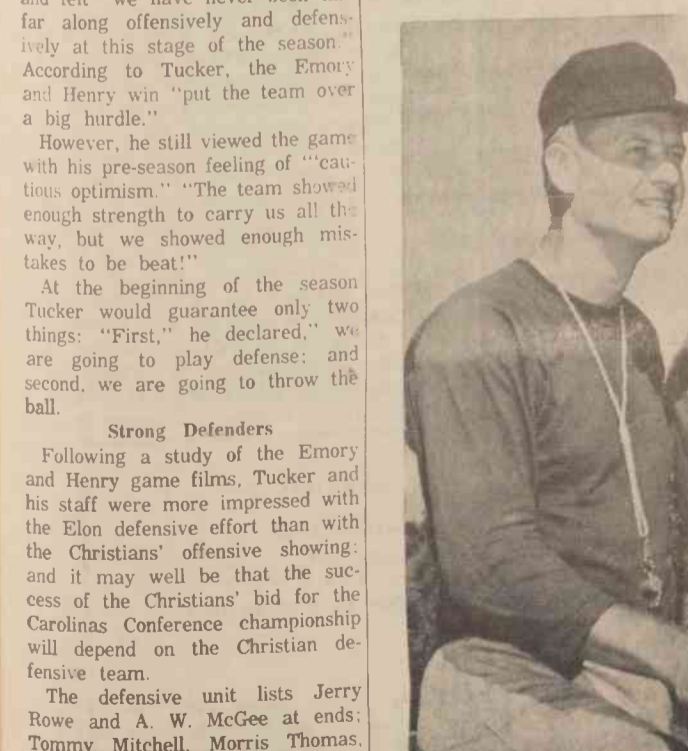
(Continued on Page Four)



Pete Jarvis (number 80 in white jersey) is shown above as he grabbed the ball on a pass from Ed Wheless for the first Elon touchdown in the Christians' 15 to 6 victory over Guilford. The Elon end grabbed the ball in the end zone almost from the snatching hands of a Quaker defender.

(Continued On Page Four)

THIS TRIO GUIDES ELON FOOTBALL FORTUNES



Guiding the gridiron fortunes of Elon's Fighting Christians this fall are the three coaches pictured above. Coach George Tucker, shown left, is starting his fifth season as head coach for the Maroon and Gold football squad. Also starting his fifth year as an Elon mentor is Coach Gary Mattocks, pictured right, who directs the Elon backfield operations. Newcomer to the Elon football staff this fall is Coach Alan White, who joined the Christians during the summer to fill a vacancy left when Coach Johnny Wike left to accept a post at Western Carolina. Both Coach Tucker and Coach Mattocks are former stars for the East Carolina Pirates, while Coach White had a fine college career at Wake Forest and then a whirl at pro football with the Edmonton Eskimos in the Canadian League.