

## Ground Is Broken For Two New Campus Buildings

### Elon Band Is Given Praise By Grid Fans

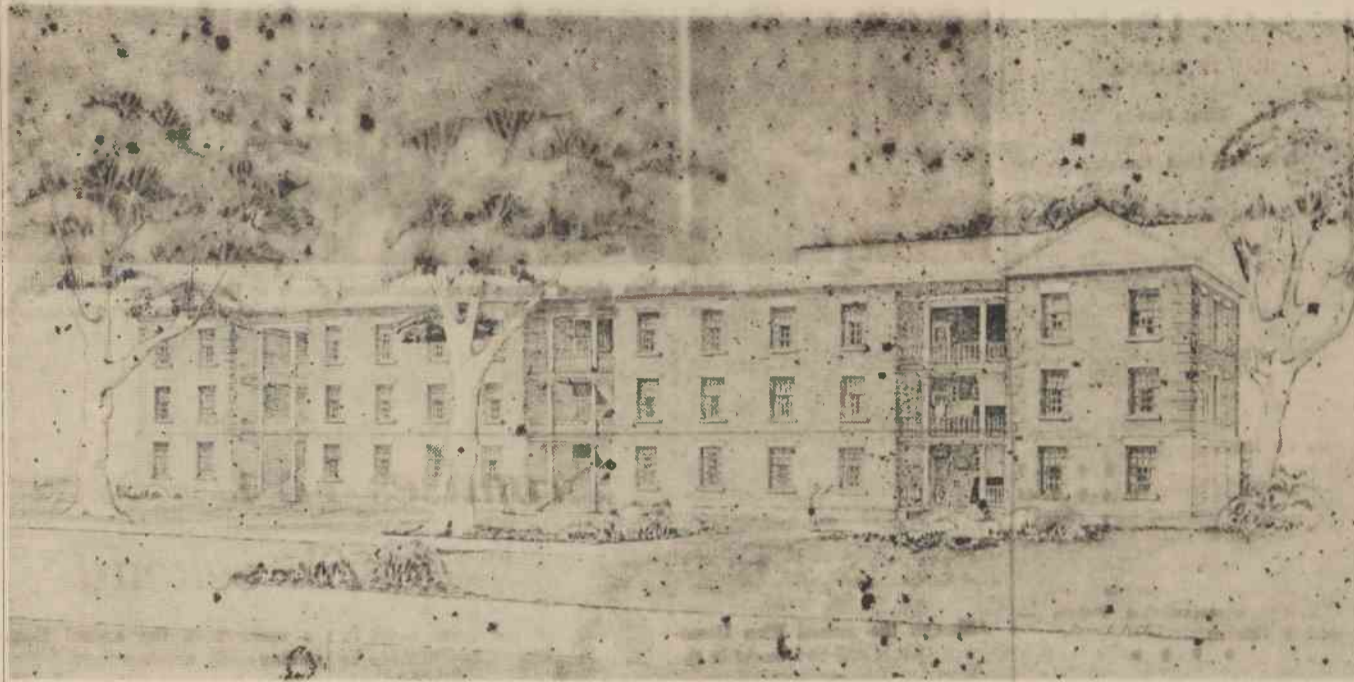
The Elon College marching band, which has added much to the color of the Elon football games both at home and on the road this season, includes more than forty students from widely varied home origins, and it has operated under the direction of Prof. Jack O. White.

The band has appeared at each of the three home football games with Emory and Henry, Guilford and Appalachian, and it was the recipient of radio plaudits for its performance on the road at the Presbyterian game in South Carolina.

The members of the band group, with home town and band duties include Carolyn Bell, flute, Henderson: Paul Bleiberg, clarinet, Wilmington, Del.; Kenneth Brown, baritone sax, Gibsonville; Tommy Burgess, tenor sax, Burlington; Dave Carpenter, drums, Burlington; Dave Conrad, bass, Arlington, Va.; Jack Cotton, trombone, Fuquay-Varina; Gregg Dorr, drums, Glastonbury, Conn.; Linda Duhl, French horn, Athens, Ala.; Larry Durham, drums, Snow Camp; Howard Eaton, trumpet, Cary; Danny Fields, drums, Burlington; Al Garrison, baritone, Smithfield, Va.; Eveline Garrison, majorette, Burlington; Bob Gregory, clarinet, Norfolk, Va.; Mike Griffin, clarinet, Burlington; Wallace Hardwick, trumpet, Burlington; Eddie Harris, drums, Cary; Candy Hopewell, flute, Portsmouth, Va.; Linda Hudson, clarinet, Grifton; Judy Hughsion, majorette, Roanoke, Va.; Garth Hutson, trumpet, Whitsett; Gary Johnson, clarinet, Selma; Steve King, bass clarinet, Durham; Nancy Morgan, French horn, Elon College.

(Continued On Page Four)

### ARCHITECT'S DRAWING FOR NEW MEN'S DORM ON CAMPUS



### Tew Will Lead Elon Freshman

Leon Tew, of Virginia Beach, Va., will lead the Elon College freshman class through its first year on the Elon campus, having been elected as freshman president after a spirited election campaign which found the entire campus literally plastered with campaign signs and slogans.

Other freshman officers chosen in class balloting held on the campus on Monday, October 11th, included Noel Allen, of Burlington, who was chosen vice-president; and Cathy Copeland, of Norfolk, Va., named as the class secretary-treasurer.

The architect's conception of the new men's dormitory to be started next month on the southeast corner of the Elon College campus is pictured above. The new dorm, a three-story brick structure of traditional design, will blend with the design of other buildings on the campus but will include the latest ideas in dormitory construction, including elimination of the long corridors that characterize other residence halls on the campus. This elimination of the long hallway is designed to provide quieter living and study conditions for men students.

### Elon's Student Body is From Many Geographic And Religious Backgrounds

The Elon College student body, which shows an increase of 24 students over the enrollment reported at the same time last fall, comes from widespread geographic origins and from varied religious backgrounds, according to a report just released from the office of Prof. Andrew V. Beale, the college registrar.

The report shows that Elon has a fall semester enrollment of 1,344 students, representing an increase over the 1,320 total for the student body for the fall semester of last year. The registrar's report also carries a breakdown of the enrollment by classes and by both home origins and religious affiliations.

The total enrollment of 1,344 students includes 871 men and 473 women. Comparative figures from last fall showed 844 men and 476 women. Another breakdown lists 1,211 students in the day-time classes, with 133 in the Evening School. The day-time figure is up by 97 over last fall, while the night registration shows a slight drop.

As might be expected, the largest enrollment is found in the freshman class, for 393 of the day-time students are in the first-year group. Other class memberships in the day classes include 317 sophomores, 234 juniors, and 211 seniors. These class enrollments do not include the freshmen, sophomores, juniors and seniors enrolled in the Evening School.

In each of the four classes men are in the majority. The freshman class includes 247 men and 146 women, the sophomore class includes 194 men and 123 women, the junior class includes 161 men and 73 women, and the senior class includes 137 men and 74 women. The Evening School student body lists 111 men and 22 women.

As was the case last year and the year before, one of the interesting facts is that more than half the day-time students and almost half of the total enrollment is listed as residing on the campus. In many past years the commuter students were in the majority, but the recent trend has been for an increase in campus residents.

The actual figures on campus and commuting students shows that there are now 630 students now residing on the campus, among them 401 men and 229 women, compared with 581 day-time commuters and 133 night students, almost all of whom commute to the campus.

Also of much interest is the widespread geographic distribution of the Elon student body, for this 1965 registration shows representatives from 24 states, the District of Columbia and three foreign countries, with the three foreign countries having furnished four students.

Among the leaders in the number of students include Virginia with 205, Maryland with 31, Connecticut with 30, New Jersey with 28, New York with 25, Delaware with 19, Florida with 15 and Massachusetts with 14 students.

These nine states furnished 94 per cent of the entire Elon enrollment, although fifteen other states are represented, along with the District of Columbia by one or more students. Among the foreign nations are Mexico with two and Jordan and the Netherlands with one each.

Among the North Carolina students, there are 56 of the state's 100 counties represented, five more than the number of counties represented last fall. Alamance County furnished 536 students, slightly less than the 543 students enrolled from Alamance County last fall. Other county leaders are Guilford with 45, Durham with 33, Rockingham with 38, Randolph with 31, Orange with 24, Forsyth with 19, Wake with 18, Caswell with 15, Lee with 12, Mecklenburg with 12 and Davidson with 10 students.

The varied religious membership and preferences show representatives of 26 different denominations three more than last fall. As he

(Continued On Page Four)

### Announcement Is Made Of \$25,000 Library Gift

Ground-breaking ceremonies for two new buildings on the Elon College campus were held at noon Wednesday as special features of the annual fall meeting of the Elon College board of trustees. The ceremonies set the stage for beginning construction next month of a new student center and a new men's dormitory at Elon.

Also as a feature of the day, Dr. J. E. Danieley announced a gift of \$25,000 from the Z. Smith Reynolds Foundation, Inc., of Sapelo Island, Ga., toward the erection of a new library. The gift came as President Danieley announced the opening of a campaign to raise \$840,686 to finance the new library.

The various committees of the college's trustee group gathered for meetings at 10:30 o'clock Wednesday morning, with the ground-breaking programs at 12 o'clock immediately after the ceremonies. The trustees attended a joint luncheon with members of the Elon faculty in McEwen Memorial Dining Hall and then held their fall business meeting in the afternoon.

Officials of the board of trustees took part in the ground-breaking for the new men's dormitory at the southeastern corner of the campus, including Secretary of State Thad Eure, of Raleigh, chairman, and Clyde W. Gordon, of Burlington, secretary, for the board. Dr. A. L. Hook, veteran member of the Elon faculty, also participated.

Officers of the Elon College Student Government Association took part in the ground-breaking for the new student center, to be located south of the Alamance Building on the campus. Also taking part along with the student officers were representatives of each state and country now included in the Elon student body.

The new men's dormitory, plans for which had been announced by Dr. J. E. Danieley, Elon president, will furnish housing for 150 men and will be financed through a loan that was recently approved by the Housing and Loan Finance Agency of the federal government. Estimates are that the new dormitory will cost approximately \$359,000.

The architectural plans for the new dormitory provide for a three-story brick structure of traditional design to blend with the other buildings on the Elon campus, but the interior design will eliminate the traditional long hallways and will provide for suites of rooms, arranged in three sections and with bath facilities for each four-room suite.

President Danieley points out that the elimination of the long hallways

### Laura Rice Heads New Show Cast

Laura Rice, an Elon senior from Burlington, who has won high laurels as a stage star in Elon Player productions, will play the leading female role in the Elon Player production of Tennessee Williams' masterpiece, "A Streetcar Named Desire," which is to be presented in Mooney Chapel Theatre for three nights on November 4th, 5th and 6th.

Miss Rice turned in memorable performances as Mrs. Alving in Henrik Ibsen's "Ghosts" in the fall of 1964 and as Bloody Mary in last spring's musical showing of "South Pacific." Playing opposite her in the upcoming Williams show will be Dale Ward, of Kensington, Md., who made his debut on the Elon stage last spring as Lieutenant Joseph Cable in "South Pacific."

Filing out the remainder of the cast for "The Streetcar Named Desire" will be such Elon Player veterans as Jo Warner, of Annapolis, Md.; Duff Winkler, of Hannibal, Mo.; Tom Warner, of Cincinnati, Ohio; Ben Bayol, of Alexandria, Va.; Doug Dwyer, of Greenwich, Conn.; and Holly Raad, of Chicago, Ill.; and newcomers Kathi Marton, of Alexandria, Va.; Bill Tyson, of Buzzard's Bay, Mass.; and Nancy Boone, of Orfield, Pa.

Rehearsals are already under way for the Elon Players' initial show of the new stage season, a production which is to be presented under the direction of Prof. Sandy Moffett, director of Elon's student dramatic program for the past two seasons; who is assisted by Tom Jeffrey, of Bethesda, Md., who proved his own directing ability when he produced the one-act play, "The Zoo," on campus last spring.

will provide quieter living and study space for the students. Each room will have built-in closets, dressers and desks for the occupants.

The new dormitory will be built in the southeast corner of the Elon walled campus and will replace the inadequate housing facilities currently being used in East Dormitory, South Dormitory and West End Dormitory. These three residence halls now furnish accommodations for 85 men, so the new structure will offer enlarged residence facilities

(Continued On Page Four)

### Husband-Wife Team Will Present Elon Lyceum Program On Monday

Peter Harrower, bass baritone, and Irene Callaway, lyric soprano, form a talented husband-wife team which is to appear in joint recital in Elon's Whitley Auditorium at 8:00 o'clock Monday night, October 18. The recital will be the second in the annual series of Elon College lyceum programs, which is presented without charge to music lovers of the area.

Peter Harrower, a native of Atlanta and a member of an intensely musical family, is the recipient of two consecutive Fulbright awards for musical study in Italy, where he quickly carved for himself a reputation as one of Italy's leading operatic singers. After two seasons with the Teatro dell'Opera in Rome, Radio-Television Italy, the Orchestra of Santa Cecilia and the Volkoper in Vienna, he returned to the United States to begin a successful career.

Since returning to America he has filled engagements with the Lyric Opera of Chicago, the Hollywood Bowl, the Cincinnati Summer Opera and the Santa Fe Opera, along with guest appearances with the Philadelphia Orchestra and the San Francisco Spring Opera and a debut in the role of Bluebeard in Baryok's "Bluebeard's Castle."

Miss Callaway, a native of Arkansas and also from a highly musical family, began singing as soon as she could talk but began her formal vocal and operatic training at Henderson State Teachers College in that state and later went on to Louisiana State University for graduate work.

Like Peter Harrower, she won a Fulbright scholarship to Italy and worked for one year with Maestro Giuseppe Bertelli of the Teatro dell'Opera in Rome and worked on con-

### STARS OF LYCEUM PROGRAM



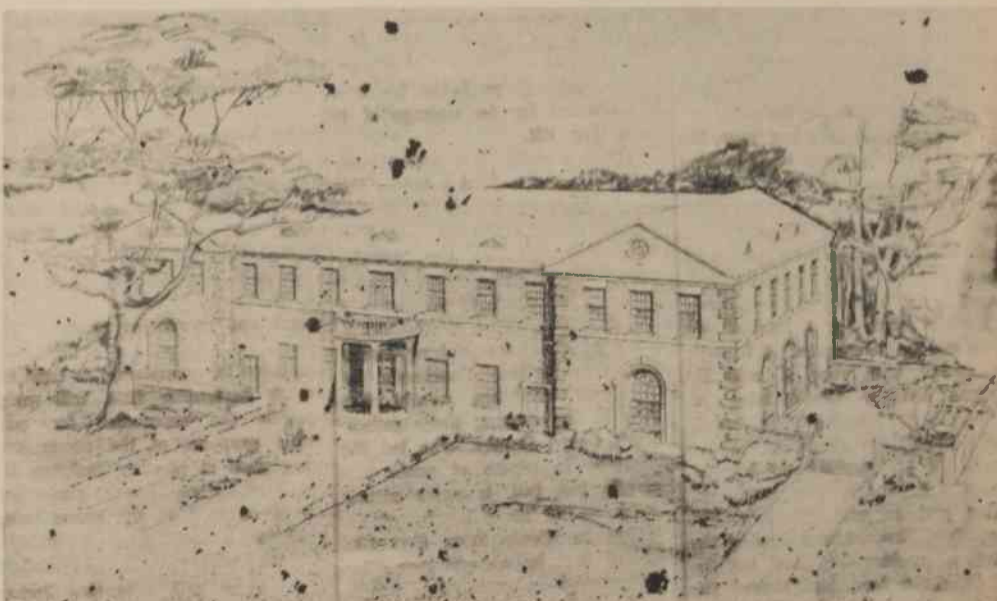
PETER HARROWER AND IRENE CALLAWAY

cert literature with Gioio Favaretto at the Accademia di Santa Cecilia. She had a successful operatic debut as Norina in "Don Pasquale" in Italy.

The lovely brunette soprano was married in Rome to Peter Harrower,

who she met as another American student, and she returned with him to America in 1959 to join with him in a successful American concert career. The two now live in Atlanta when they can have time between professional engagements.

### NEW CENTER FOR STUDENT OFFICES PLANNED



The new student center, which is to be started within the next month, is pictured above in the architect's drawings, which portray the two-story structure that will stand on the oval south of Alamance Building on the Elon walled campus. The new student center will provide quarters for various student government and campus activities and will make possible the transformation of space now used by those activities in Mooney Building into classroom and office space.