

features

Tour follows nature's paintbrush in county

by Sherri Moore

Fall...a mystical, magical time of year when Mother Nature takes her paintbrush and dips it into bright oranges, blazing reds and brilliant yellows and sweeps it across the trees.

Mother Nature is gracious to Elon College in the fall. The oak trees burst into dazzling colors and then shed their leaves to let them drift down to the ground, leaving a multi-colored carpet for students to walk through.

Equally as beautiful as Elon College's campus is a fall-leaf tour, the brainchild of Alton Wilson, a teacher at Southern Alamance High School.

The trip through southern Alamance County and part of Chatham is only about 60 miles, and the leaves are still beautiful despite the late fall date.

THE TOUR

*Follow NC 87 south of I-85 for .7 miles to Rogers Road (on the right).

*Follow Rogers Road 3.1 miles to Southern Alamance High School (SR 2387) and take a left.

*Follow Southern High School Road 1.1 miles to Woods Chapel Road (SR 2324) and take a right.

*Follow Woods Chapel Road .9 mile to NC 87 and bear to the right onto Bass Mountain Road (SR 2327).

*Follow Bass Mountain Road for .2 mile and at the fork, bear to the left. Continue for .3 mile to Thompson Mill Road (Mt. Hermon Community Center will be

on your right) and turn left. This road is where the new Three Colleges Observatory is located, but one cannot see it from the road. Follow this road for 5.3 miles to the intersection of the Snow Camp Road (SR 1004). Cross over the Snow Camp Road and you will be on the Bethel-South Fork Road (SR 2351).

*Follow the Bethel-South Fork Road .9 mile to the pyrophyllite quarry (located to the left and right of the highway) for a stopover. Continue on Bethel-South Fork Road (crossing SR 1005, Major Hill Road and the Chatham County line) 5.5 miles to the South Fork Friends Church (on the right). Turn back to the right onto SR 1338.

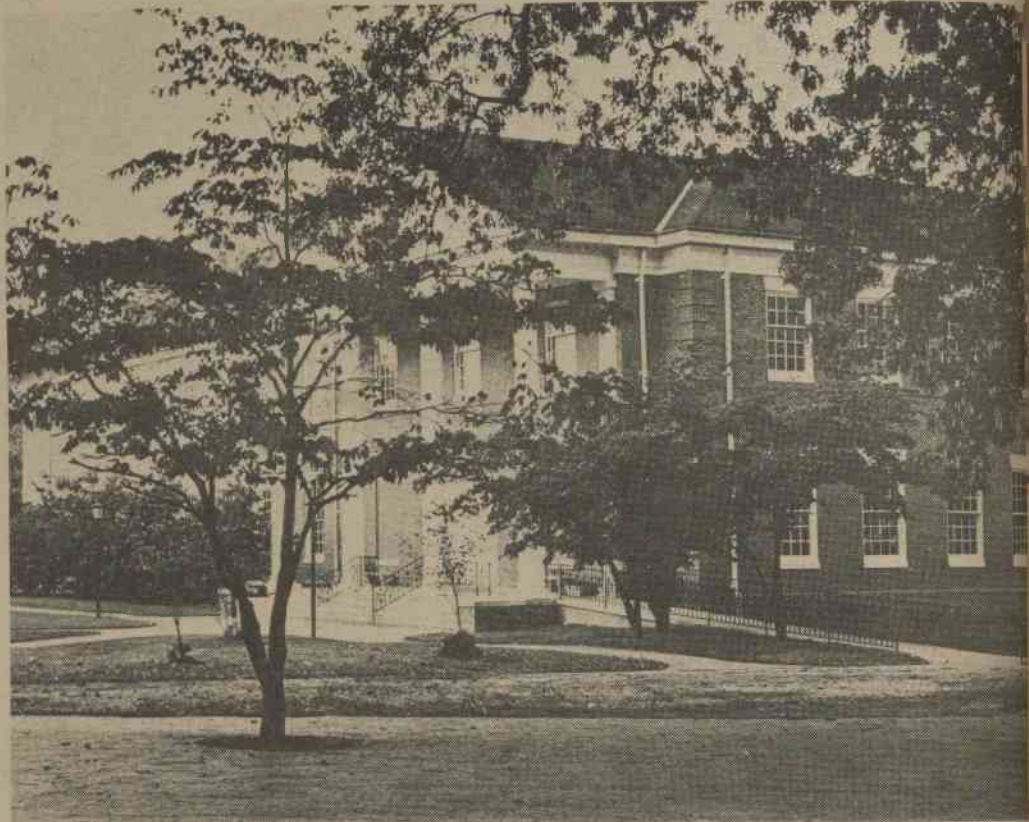
*Follow SR 1338 for 1.3 miles to a stop sign and SR 1337 and turn right.

*Follow SR 1337 approximately 2 miles to SR 1341 and turn right, driving .1 mile and Sheep's Rock is in the woods on the right.

*Follow SR 1341 (re-entering Alamance County). The road becomes Holman Mill Road and travel 4 miles (from the county line) to the Holman Mill Dam. The dam is located on the left, in the woods, from a dirt turnout just past the bridge. It cannot be seen from the road.

*From Holman Mill Road Dam, follow Holman Mill Road .1 mile to the Greensboro-Chapel Hill Road (SR 1005) and turn left.

*Follow SR 1005 for 1.5 miles to the Snow Camp



AUTUMN'S ART — McEwen Library is graced by a flaming dogwood as Fall descends upon Elon. Photo by Nader Hamidpour.

Road (SR 1004) intersection (at Allen's Store) and turn left.

*Follow SR 1004 .7 mile to SR 2360 and turn right (Thompson's Garage and the Snow Camp Fire Department will be on the left, as will be a sign to the Snow Camp drama site, 'Sword of Peace'). Follow SR 2360 for 1.2 miles to Cane Creek

Friends Church. At the intersection, SR 2360 ends and the Greensboro-Chapel Hill Road (SR 1005) begins. Go across the intersection. As one tops the hill (with Cane Creek Church on the right), a small monument in the cemetery that is a tribute to the old Sylvan Academy can be seen. The Cane Creek Church cemetery has graves

dating back to the Revolutionary War period.

*Continue on SR 1005 for 2.4 miles until intersecting with the Coble Mill Road (SR 2365) and turn right. Follow this road 1.1 miles to the Mt. Hermon-Rock Creek Road (SR 2321) and turn right. Follow SR 2321 for

cont. on p. 8

Toney asked by Governor Hunt to serve on N.C. 2000 program

by Jo Craven

In today's existentialist atmosphere, little thought is given to the future, yet the future can hardly be ignored. Tomorrow will soon be today, and before one knows it, a new century will unfold; it will be the year 2000.

Not everyone abides by the existentialist's code of life for the moment, and a notable exception is Elon College's Associate Professor James Toney.

Governor Jim Hunt has appointed Toney to serve on the N.C. 2000 program. This program will focus on the future of North Carolina for the next two decades and will provide citizens with a source of input into long-range state planning. It will concentrate on improving the conditions of the economy and natural resources in communities.

Each of North Carolina's 100 counties will have a chapter, and Toney will be the chairman of the Alamance County segment. Toney was chosen for the job because of his background in economics and education.

"North Carolina's economic and educational situations will affect her future more than anything else," says Toney, "and a person with a background in both is uniquely qualified for the job." Toney also explains that he has been a North Carolina resident all of his life and has spent the last 22 years in Alamance County. "This gives me a special interest in North Carolina's future," he adds.

Toney's contacts with county leaders also made him an ideal candidate for the position. As chairman he will be expected to gain the

participation of local leaders and a "steering committee" will be formed from these volunteers.

Toney will hold his first meeting in January to discuss local and state issues. The group will reconvene at another time to prepare for the county's future. Toney must also select two delegates who will accompany him to the N.C. 2000 state conference.

"It's going to be a big job," says Toney. But he expresses his personal confidence in Governor Hunt's plan.

"I think it is logical for North Carolina to look ahead to the year 2000. I'm hopeful that the program will be successful and that because of it North Carolinians will enjoy a better quality of life." Professor Toney leaves little doubt that this will be the case.



COUNTY CHAIRMAN—Professor James Toney, Alamance's N.C. 2000 chairman, browses through his office library. Photo by Nader Hamidpour.