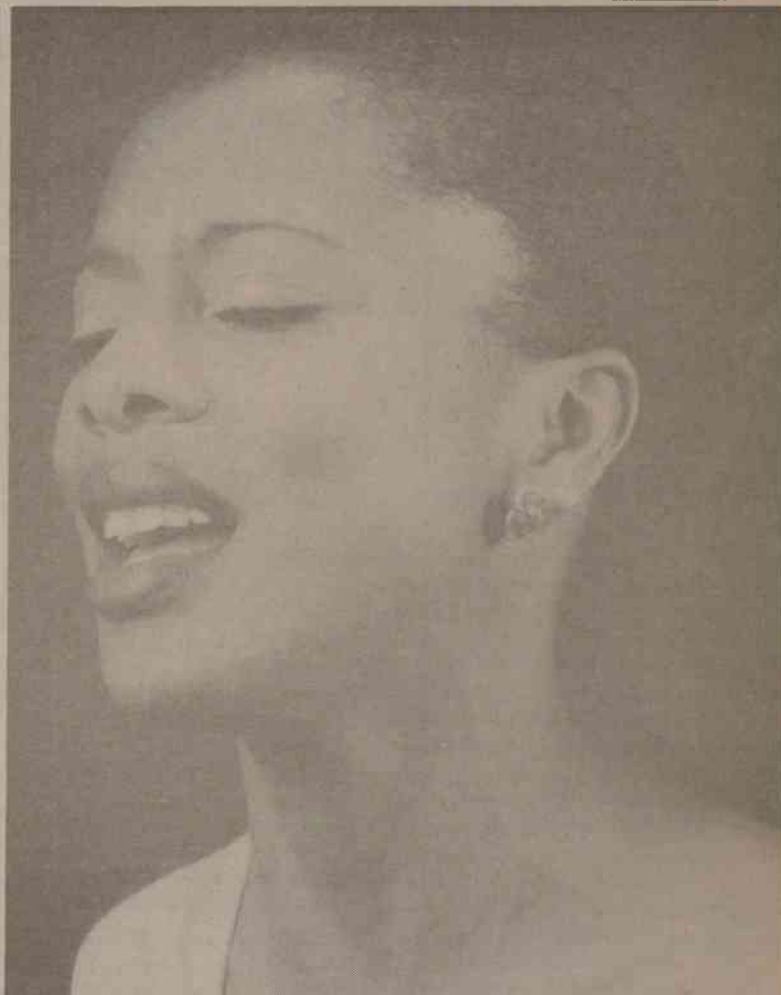


Entertainment



Cultural programs are many, varied

The Office of Cultural and Intellectual Programs has announced a schedule that will bring acts of drama, music, and speakers from around the world to Elon this fall.

At the top of the schedule is a concert performance of the Irish-American folk group, Touchstone. The band will perform a preview show "Under the Oaks" at 4 p.m., and the evening concert will start at 7:30 p.m. in Whitley Auditorium.

Shady Grove, a bluegrass group will be at Elon on Sept. 19, performing a preview performance "Under the Oaks" at 4 p.m., and a concert at Whitley Auditorium at 7:30 p.m.

The Liberal Arts Forum will present "An Evening With Shakespeare" on Sept. 18 at Mooney Theater. Dr. Bob Blakes production will serve as preparation for the North Carolina Shakespeare Festival which will be held at Whitley Auditorium on Sept. 25 at 8 p.m. The state's premier theater company will perform *The Taming Of The Shrew*. Admission is \$8.00 for the public and free for those with

college identification.

The Elon College Community Orchestra will present a concert featuring the music of Bach and Handel in Whitley Auditorium on Sept. 30 at 8 p.m.

B. Franklin Skinner, president of Southern Bell, will speak on "The Future of Communication Technology" at Whitley Auditorium on Oct. 8 at 7:30 p.m.

The Cornelious-Crawford Duo, featuring vocalist Eve Cornelious and pianist Chip Crawford, will perform in Whitley Auditorium on Oct. 30.

On December 2, The Elon College Lyceum will sponsor a concert by the South American group Tahuantinsuyo, who will perform music from the Andes Mountains.

The fall schedule of cultural events at Elon will also include a speech by U.S. Sen. William Proxmire D-Wisc., although a date has not yet been announced.

This article has listed only a few of the many cultural events scheduled. Watch "This Week at Elon" every Thursday in *The Pendulum* for the complete schedule.

Fall performers include North Carolina Shakespeare Festival (above left), jazz singer Eve Cornelious (above) and bluegrass group Shady Grove (below).

