

# Divestment

continued from page 1

But the resolution adopted by the board differs from that of the faculty in that it does not call for divestment. Instead, the board unanimously decided to prevent any future investment with companies involved in South Africa who do not adhere to the Sullivan Principles.

The resolution reads: "That the Elon College Endowment Fund not invest in stock of any corporation which has operations in South Africa unless that company subscribes to the Sullivan Principles."

The Sullivan Principles require nonsegregation of races, equal and fair pay and employment practices, training programs for minorities, an increase in the number of blacks and other non-whites in management and supervisory positions, and improvements in the quality of employees' lives outside of the work environment.

"In effect, that means that we will divest from those companies," said Palmer.

Palmer explained that the board decided to allow the stock in such companies to withdraw "normal-



Dr. Melvin Palmer

ly." "It could occur in less than one year if the divestment committee continues to operate as they have in the past," said Palmer.

Palmer said that \$2 million of the total endowment is invested in stocks. Of that \$2 million, he said, \$180,000 is invested in companies who do not subscribe to the Sullivan Principles.

"There was no question at all in the board that it was a good thing," said Palmer. "The question was instead, how to address the problem in a practical way."

Waller, when asked to comment, said, "Given the principles Elon is promoting, we shouldn't have any money in companies who don't adhere to the Sullivan Principles."

"We're making a travesty of the principles we supposedly hold," he said.

Waller said that he wishes the board had taken their decision a step further and voted for the complete divestment from companies who do business with South Africa.

"I know that's a difficult step," Waller said. "But it seems that Elon ought to be able to undergo some difficulty to line up to (its principles) fully."

"Such a leisurely attitude is not what we (the faculty) hoped for," said Waller. "The nature of divestment is to put pressure on these companies to clean up their act. I'm not sure that it is going to happen this way," he said.

"But," he added, "I'm glad they've decided to at least divest from the companies not adhering to the Sullivan Principles. That seems to me the absolute minimum we could do."

# Weekend

Continued from page 1

At 10 a.m., parents will meet in Whitley Auditorium to hear Dr. J. Fred Young, president, speak on the state of the college.

At 10:45, parents will have an opportunity to meet the faculty in McEwen Library. Members of the college faculty will be grouped by departments throughout the library to give parents a chance to meet their son/daughter's professors.

A picnic lunch will take place at 11:30 in front of McEwen Dining Hall. Box lunches will be on the menu; and they may be eaten in the dining hall, under the trees, or taken back to the dorms.

"The Showband of the Carolinas," directed by Dr. Jack White, will perform a pregame show at 1:30 p.m. in Burlington Memorial Stadium. Game time is 2 p.m. when the Fightin' Christians take on the Bulldogs of Gardner-Webb.

Wrapping up the evening will be "The 5th Quarter Social" at the Alamance Country Club. The dance is sponsored by the Elon College Alumni Association. The Nomads will perform a variety of music, and set-ups and hors d'oeuvres will be provided. Because of the country club rules, tickets must be purchased in

advance. Sunday morning gets underway with brunch from 10 a.m. to 1 p.m. in McEwen Dining Hall. Tickets will be available at the door.

At 11 a.m., a special Parents Weekend worship service will be held at the Elon College Community Church.

The Campus Shop will be open from 1 to 4 p.m. also at 1 p.m. Elon's renowned jazz ensemble, the Emmanons, will perform in Whitley Auditorium to conclude the weekend's activities. There will be no admission charge.

According to Susie Sanford, director of Alumni and Parent Programs, Parent's Weekend is expected to be a huge success. "We expect a really big crowd this year," she commented. "Maybe even the biggest ever."

**INTRODUCING THE BEST FRIEND DRY, DAMAGED, BRITTLE HAIR EVER HAD!**

**LAMAUR STRATA**

HAIR CARE PRODUCTS



**LAMAUR STRATA HAIR CARE PRODUCTS**

contain highly functional STRATA COMPLEXES, which are of the proper molecular size to penetrate and moisturize each structural level of hair. Each complex is size-selected as well as functionally selected to moisturize and condition a different part of the hair's structure. This means moisturizing and conditioning agents are delivered where they can do the most good. Texture, resiliency and manageability are all improved, leaving hair lively, lustrous and resilient.

Your professional stylist can offer you a complete regimen of hair care to revitalize dry, damaged, brittle hair, giving it beauty and a natural appearance you never thought possible.

**F. Scott's**

Edgewood Shopping Center  
2966 S. Church St.  
Burlington, NC 27215  
584-0600

SOLD ONLY IN PROFESSIONAL BEAUTY SALONS

# Fine Arts

he is looking forward to growth there.

The Fine Arts Center will consist of three areas, or wings: a music wing, an art wing and a theatre.

The music wing will be two stories. The first story will house the complete music program with several specially designed rooms for music classes, a large

band/orchestra practice room and a music repair room.

Also, on the first floor will be a recital hall, with a small stage, which will seat 125 people.

The second story will house studios for the entire music faculty and practice rooms for students. A large elevator will connect the two floors to allow easy movement of instruments.

The art wing will only be one story, but will still allow the size of art curriculum offerings to double and the facilities will enable an art major to be added, White said.

Three studios and a ceramic room will be included in the art wing, along with an art gallery which can be used for exhibitions of art work and for recep-

tions. The final wing consists mainly of a professional theatre which will seat 600 and will include a full stage, an orchestra pit and a full fly loft from which scenes can be raised into and lowered from.

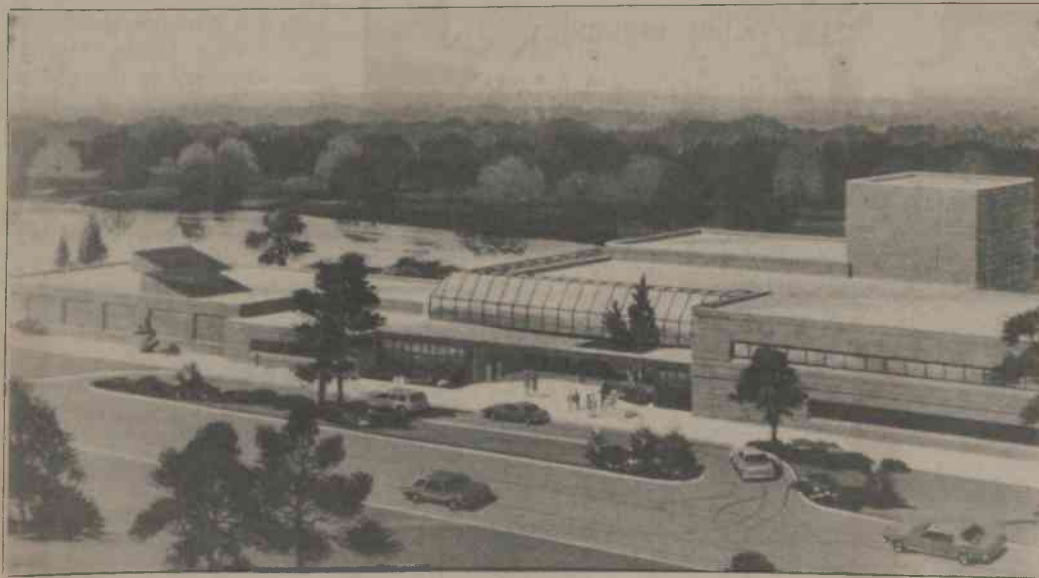
"There is no theatre in the area like this," said White. "We will be able to bring in or put on as big a production as we want."

This wing will also include a small, multi-purpose room which can be used for rehearsals or theatre-in-the-round.

The Fine Arts Center will free up a great deal of badly needed space on the main campus in Whitley and Carlton buildings.

White said Whitley Auditorium will continue to be the site for many speeches, lectures and other presentations, but the offices and practice rooms in the building could be given to student organizations or converted to offices for part-time faculty.

As for Carlton building, White said there have been several suggestions made for uses of the areas to be vacated, but none are as firm as the options for Whitley. The college probably will do some remodeling in Carlton, he said.



ARTIST'S CONCEPTION: The new Fine Arts Center could look like this when finished in 1987.