

This Week At Elon

TICKETS

Admission to some programs in the Fine Arts Theatre is by TICKET ONLY. Students, faculty, and staff may pick up free tickets to these programs in the Fine Arts Building Office.

Information for this page comes primarily from the listing published by the college's Office of Cultural Programs. To include your program in this listing, provide clearly typed information -- program name, date, time and place and a brief description -- to the Fine Arts Center office by noon each Friday. The Cultural Programs listing accepts notices only for programs open to the entire Elon community, but not regularly scheduled meetings of campus organizations or committees.

If you wish to place your announcement directly to *The Pendulum*, it should follow the same, typed format and be delivered by noon Friday to *The Pendulum* office, on the second floor of The Gallery at the corner of Williamson and Lebanon streets.

DAY/DATE	EVENT	LOCATION	TIME			
Thursday Sept. 8	College Coffee Olympic Kickoff	Fonville Fountain	9:30-10:00	Monday Sept. 12	Women's Basketball	Alumni Gym 3:30 p.m.
	Men's Soccer Elon vs. Berry College	Bakatsias Field	3:00 p.m.		Men's Tennis Tryouts	Alumni Gym 4:00 p.m.
	Women's Soccer Elon vs. Berry College	Bakatsias Field	5:00 p.m.	Tuesday Sept. 13	College Chapel	Whitley 9:30 a.m.
	Del Suggs If you like Jimmy Buffett, you'll love Del Suggs.	Back Door	7:00 p.m.		Men's Soccer Elon vs. Pfeiffer College	Bakatsias Field 4:00 p.m.
Saturday Sept. 10	White Water Rafting Depart from the Varsity Grille Patio for an action packed weekend of camping and white water rafting!	Nantahala River	6:00 a.m.	Wednesday Sept. 14	Volleyball Elon vs. Pembroke State	Away 6:00 p.m.
Sunday Sept. 11	Women's Soccer Elon vs. U. of Maryland	Bakatsias Field	2:00 p.m.		John McCutcheon Songwriter, folklorist, storyteller	Fine Arts Theatre 8:00 p.m.
					Ashley Cleveland Come enjoy some old fashion home-made desserts after din- ner and listen to Christian ar- tist, Ashley Cleveland. Rain location: Whitley Auditorium.	Alamance Courtyard 5:30 p.m.
					Men's Soccer Elon vs. St. Andrews	Bakatsias Field 4:00 p.m.
					Volleyball Elon vs. Methodist/Christopher Neupert	Away 3:30 p.m.
					Rob Owen Rob Owen will speak on the Iran-Contra affair	Fine Arts Theatre 7:30 p.m.
					Talent Show sign-ups	Long 210

Wilkison, Stewart to play exhibition match for tennis courts dedication

Professional tennis players Tim "Dr. Dirt" Wilkison and Burlington's Eddie Stewart will be featured in an exhibition match as part of the dedication ceremonies for the Jimmy Powell tennis courts coming Wednesday.

There will also be exhibition doubles matches by the Fighting Christian men's and women's

teams who will play against the teams from NAIA rival Presbyterian College.

The college matches will begin at 4:00 p.m., and the dedication will follow at 5:30 p.m. At this time, Wilkison will take on Stewart.

Head coach Tom Parham said Wilkison "is probably the premier

player in the history of North Carolina tennis. We are quite pleased that we could fit into his schedule."

Wilkison, fresh off play in the U.S. Open in New York, has quite a tennis resume. Shortly after winning the U.S. National Championship for 16 year olds, he joined the pro circuit.

His career includes wins over Bois Becker, Yannick Noah, Henri LeConte, Kevin Curren, Arthur Ashe, Brad Gilbert, Roscoe Tanner, and Guillermo Vilas.

Also an accomplished doubles player, he teamed with Andrew Castle of England to defeat Wimbledon champion Stefan Edberg and Pat Cash in the Canadian Open this August in Toronto.

A million dollar circuit player, Wilkison has endeared himself through aggressive play that earned him the nickname "Dr. Dirt."

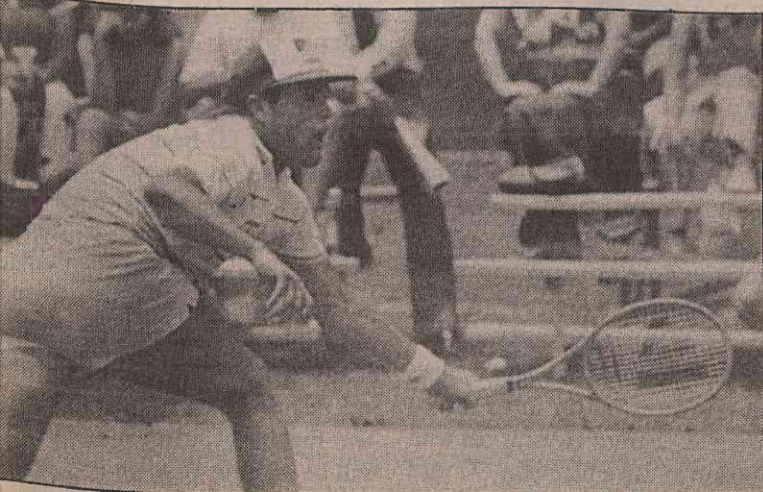
His play in the U.S. Open make him a national celebrity.

Eddie Stewart has credentials of his own and will provide fine opposition to the noted Wilkison. Stewart, a UNC standout for four years is a former Williams High School star.

Both the pro exhibition and the college matches are part of the dedication of the impressive Jimmy Powell Tennis Center. The center is finished and students at Elon College already are using the courts.

The dedication ceremonies will honor Jim and Anne Powell who challenged the community to match a major gift. This was done by a combination of court donors, the Tom Sawyer "1000" and the Tom Sawyer Huck Finn Tennis Classic participants.

The public is invited to come to both the matches and join in the dedication of the courts.



Tim Wilkison

Vital Statistics

Name: Tim Wilkison
 Born: Shelby, North Carolina
 Birthdate: Nov. 23, 1959
 Height: 6'0"
 Weight: 175
 Hair: Brown
 Plays: L

