

Is the campus parking lot half full or half empty?

One of the top items on my agenda today is "move car". It's wedged in there between my Wellness homework and finding someplace to eat dinner. So, eventually I have to bundle up and go out to West parking lot and move my car a little less than half a mile to Jordan Center. Not that I live in or near Jordan, I just have to park there, even though it's two street crossings away from my dorm. Home for me is about 400 miles from campus and I cringe at the thought of air travel, so my parents let me bring my car to school.

After we registered, I had to go to a presentation made by one of the Campus Security officers (who looked as though she could break me in half with her pinky) on parking regulations and restrictions. I even got a nice little manual that was promptly tossed in my glove compartment, I think. The basic gist of the presentation was this: my little green Elon sticker limits me to parking in Jordan Center.

Ta-da, that's it, unless it is a break or a weekend. And that would be fine if I didn't live all the way over in Virginia. We have this great little parking lot right behind West that would be ideal to use as opposed to walking all the way to JC, but it is only for faculty and staff use

during the week and if I park there at night, my car must be gone by 7:30 AM weekday mornings or it will be courteously relocated for me. On the other side of campus, drivers who live in Moffitt and Staley are supposed to only use Harper Center parking.

Unfortunately, on weekends the main complaint is that Greeks and visitors to Moseley or the Loy Center take over Harper, forcing overflow parking to be re-routed to McMichael. Disgruntled Harper drivers who decide to park closer to home in Moseley's lot can be fined up to \$25 for using reserved spaces set aside for Staff or Visitors.

This isn't an issue on weekends, minus the inconvenience of trying to find close spaces, but if it happens on a weekday the same 7:30 AM rule applies or you will wake up to find out your car has been kidnapped and taken to Burlington.

The trouble with campus parking isn't that it is unreasonable; it's that students are uninformed about changes to the policy. This becomes especially problematic during breaks. Recently, during "Fake Break" multiple students were fined for parking in the West parking lot "illegally."

Since classes didn't start un-

til that Wednesday, they had figured it was OK to park in West as opposed to JC until Tuesday night. Unfortunately, according to Campus Security, Monday was Registration and since faculty and staff had to be on campus, students were not permitted to park in West. I did

Lauren Melfa

lmelfa@elon.edu

Columnist

some research and found about 15 confirmed tickets for that day, however I have heard numbers floating around as high as 25 and 30, which seem more accurate because the West Lot was apparently "packed". When asked, students said that they knew the parking rules but had no idea that Monday, January 29th was considered a "working weekday", despite being over a break. Now they are out of \$12-25, which is mucho dinero on a typical college student budget.

You could go and see Hannibal at least twice for that much and still be able to hit a Wafflehouse every night of the week, with money

to spare!

Despite being dubbed "fake break", most students treat any long period without classes as a traditional break.

We do not always realize when the staff and faculty will be on or off campus, we just know we have off and assume they should too. Unfortunately, we are apparently expected to know faculty schedules or else the massive ticketing on the 29th never would have happened.

Since we have so little visitor parking, students in Harper Center often revoke their parking spots to visitors, only to be moved to McMichael, an area not only a good

trek away from the dorms but also designated as Staff/Commuter parking. This whole process sets Harper drivers up for more illegal parking fines since the "excuse" of being unable to find "convenient space" just won't work.

Of course there is always Danieleley, the official overflow parking lot for all of campus. I'm sure everyone in the flats would be tickled pink if everyone from up campus took that rule literally. We would have a whole other situation on our hands. The bottom line?

Tell the students when they should move their cars if it varies from the traditional regulations, it will save Campus Security ink and paper and students a few bucks. With all this hype about rising in ranks to "University" status, maybe we do need more Visitor parking. If things keep up like this, maybe that Lighthouse rumor will have some truth in it.



Learn the truth about the real war on drugs

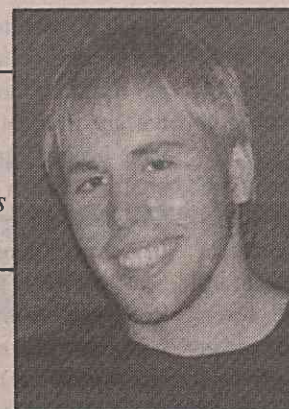
I know that this is not the Arts and Entertainment section, but have you seen the new movie "Traffic"? If you haven't seen it...you should.

It addresses

Rady Large

rlarge@elon.edu

Assistant Opinions Editor



the issue of America's war on drugs in a real, personal and down to Earth manner. The

whole movie is based around the lives of four characters, a Mexican state policeman, a drug lord's wife, the newly appointed US Drug Czar and his daughter. Other than a superb cast and great acting jobs across the board, the film boasts one of the most elaborate and outstanding scripts Hollywood has ever produced.

I don't want to ruin anyone's movie going experience so I'll stop

there with my description. The real issue here is America's "War on Drugs." Is it working? What is really going on? How much of your family's money I spent on it?

In the next two weeks I will be throwing some information around that will hopefully show the Elon community why the drug war is already lost and how we are

wasting valuable tax dollars and human lives on a war that is going to be more costly to America than the Vietnam War.

I want to hear your opinion on this issue. What does the Elon College Community think of America's "War on Drugs?" Write me at rlarge@elon.edu and tell me your opinion. It doesn't have to be a doctoral thesis- just a word or two.

LETTERS TO THE EDITOR

Letters to the Editor continues on Page 14

Student supports SGA candidate

To the Editor:

I am writing in support of Cameron Dejong's candidacy for SGA Executive President. I met Cameron in fall of 1999 through North Carolina Student Legislature, a political organization on campus. Through this contact, I have seen Cameron display qualities that would be very beneficial to the SGA and the student body. As Vice-Delegate Chairperson and Delegate Chairperson for Elon's chapter of NCSL, Cameron has worked hard to uphold the principles of NCSL.

Unfortunately, at times, apathy and a lack of responsibility permeated the organization, espe-

cially on the statewide level where several North Carolina colleges and universities meet to debate legislation. NCSL has the prospect of being a strong organization, whereby students in have the opportunity to write legislation to change policies in North Carolina, and Cameron is committed to see NCSL evolve and fulfill these objectives.

I have faith that Cameron will act with the same dedication and motivation as the SGA President on behalf of the students. Cameron's web site, www.voteam.org, proves that he discusses concerns with Elon students and is aware of changes students want on campus. He has already outlined specific goals that

he will start pursuing as soon as his term begins. I also know Cameron has an amiable personality and a deep concern for Elon students, both of which will be beneficial as the representative of the student body.

I whole heartedly believe Cameron Dejong will be a fantastic SGA Executive President. I urge you to vote in the SGA elections on February 26-27. You are fortunate to have students who will dedicate time to represent you, address your concerns, and improve Elon.

Respectfully,
Carolyn Lampila