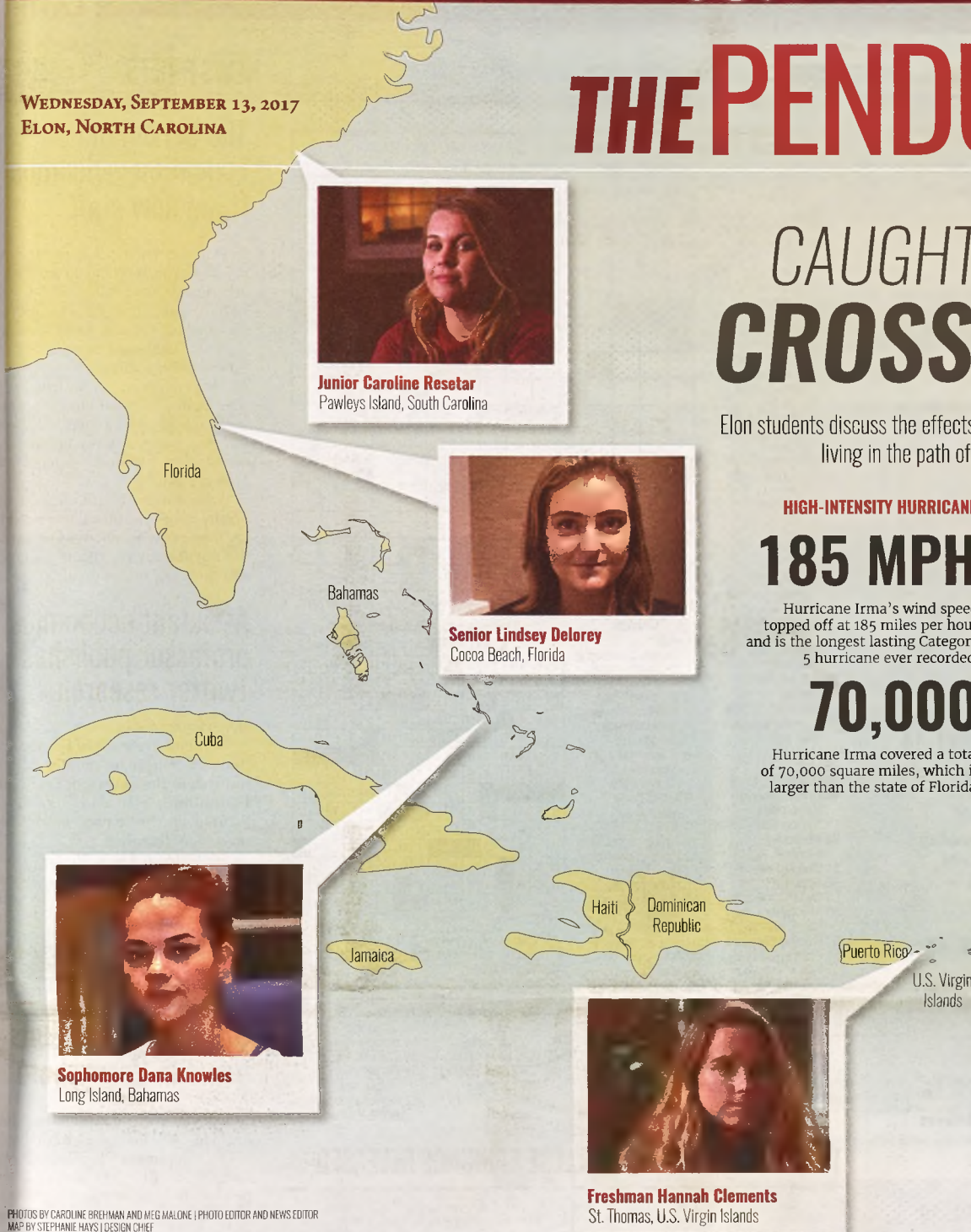


WEDNESDAY, SEPTEMBER 13, 2017
ELON, NORTH CAROLINA

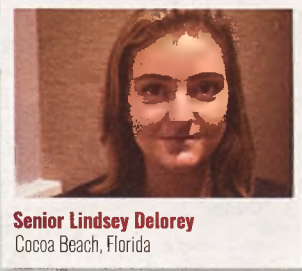
THE PENDULUM

CAUGHT IN IRMA'S CROSSWINDS

Elon students discuss the effects of their families and loved ones living in the path of record-breaking Hurricane Irma



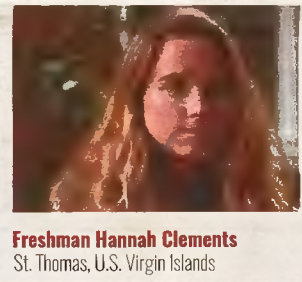
Junior Caroline Resetar
Pawleys Island, South Carolina



Senior Lindsey Delorey
Cocoa Beach, Florida



Sophomore Dana Knowles
Long Island, Bahamas



Freshman Hannah Clements
St. Thomas, U.S. Virgin Islands

HIGH-INTENSITY HURRICANE

185 MPH

Hurricane Irma's wind speed topped off at 185 miles per hour and is the longest lasting Category 5 hurricane ever recorded.

70,000

Hurricane Irma covered a total of 70,000 square miles, which is larger than the state of Florida.

Anton L. Delgado

Assistant News Editor | @ADelgadoNews

FOR ALMOST 12 HOURS, Elon University freshman Hannah Clements lost all forms of communication with her family after Hurricane Irma tore through her hometown of St. Thomas, the gateway isle of the U.S. Virgin Islands.

As one would expect, she was nervous. But the phone conversation she had with her parents after the storm did not help her fears.

"It looks like a bomb's gone off," Clements recalled her father said the day after the hurricane battered her home.

Hurricane Irma is the longest lasting Category 5 hurricane ever recorded. Its wind speed topped off at 185 miles per hour, while Irma itself covered 70,000 square miles, which is larger than the state of Florida.

Its path of destruction steered through the Caribbean and made landfall in Florida, killing at least 40 people so far.

Clements is part of the 4 percent of students with permanent addresses in Irma's path.

See **IRMA** | pg. 5

PHOTOS BY CAROLINE BREHMAN AND MEG MALONE | PHOTO EDITOR AND NEWS EDITOR
MAP BY STEPHANIE HAYS | DESIGN CHIEF

'Why am I here?'

Nontraditional students navigate Elon's traditional campus

Alexandra Schonfeld
Lifestyle Editor | @aschonfeld096

In August Elon University welcomed 1,553 freshmen onto campus to begin the four years of their undergraduate career. While the majority of students on campus are between the ages of 18-22, among them are "nontraditional" students hoping to obtain a degree and better their lives. Nontraditional students — students over the age of 25 — only make up 1 percent of the Elon student body, though exact numbers were not available through Elon University admissions.

These are students who often have their own families and responsibilities, but have made the decision to come back to school in hopes of reaching a brighter future. But despite their best efforts, some of these students are finding it hard to feel welcomed as part of the Elon community.

See **NONTRADITIONAL** | pg. 10



ALEXANDRA SCHONFELD | LIFESTYLE EDITOR

Harris, who has her own physical disability, hopes a degree in Human Services will allow her to be a resource for parents and care-takers in Alamance County who are caring for loved ones with disabilities.



NEWS • PAGE 7
SGA elects new freshman class officers



NEWS • PAGE 8
New Danielely gate causes traffic backup



SPORTS • PAGE 11
Two volleyball team members hit major milestones