

WEDNESDAY, FEBRUARY 7, 2018
ELON, NORTH CAROLINA

THE PENDULUM

FIGHTING THE FLU

National wave of flu affects Elon, infecting 3 percent of students

Sam Casamento
Elon News Network | @SamCasamento

The 2017-2018 flu season is the worst in more than a decade.

Nationally, there are more than 215,000 confirmed cases of the flu. One out of every 14 doctor's visits nationwide were related to flu symptoms.

And as of Wednesday, 53 children died from flu-related symptoms.

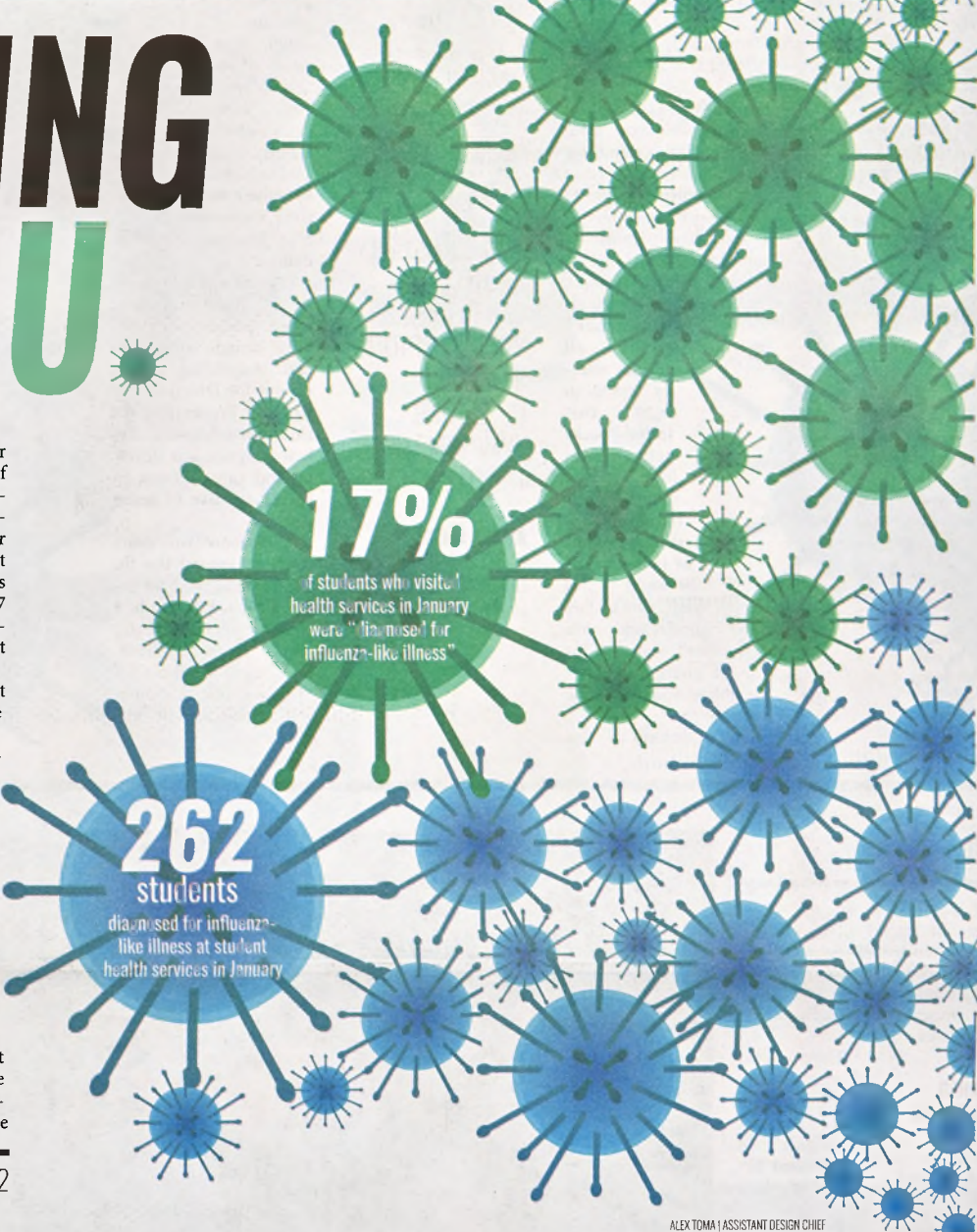
Here at Elon University, the disease is spreading, too. Jana Lynn Pat-

erson, vice president for Student Life and dean of student health and wellness, said 262 Elon students were "diagnosed for influenza-like illness" at Student Health Services in January — which is 17 percent visits to the Student Health Services that month.

In total, that's about 3.7 percent of the entire student population.

Amber Smith, a registered nurse at Alamance Regional Medical Center, said the best way to combat the flu is by simply getting a flu shot. But this year, the shot has been proven less effective. A report by Canadian scientists says the vaccine is only 17 percent effective against the H3N2 strain, which causes about 80 percent of the virus. Still, while this report isn't conclusive against the entire

See **FLU** | pg. 2



Raising the pressure

GPA raise prevents some freshmen from joining Greek life

Nina Fleck
Elon News Network | @elonnewsnetwork

Bigs. Littles. Tons of glitter. Each spring, girls at Elon University eagerly anticipate a mega change to their college social lives: the opportunity arises to join a sorority.

But a change in the minimum GPA requirement for girls to go through Panhellenic sorority recruitment disqualified a number of girls from fulfilling their

hopes of becoming part of a sisterhood.

This school year, Elon's Panhellenic Association opted to raise the minimum GPA requirement for girls to go through recruitment from 2.8 to 2.9.

According to Jordan King, the interim director of Fraternity and Sorority Life, the Panhellenic Association made the change to reflect "the trends at Elon with how the GPA has risen."

Though this year the admissions office boasts a freshman class that was accepted with an average high school GPA of 3.98, the minimum college GPA necessary for girls to be eligible for recruit-

SORORITY GPA

2.9

The spring 2018 Panhellenic recruitment minimum GPA requirement. In spring 2016, the requirement was 2.75 and in spring 2017, the requirement was 2.8.

ment was unattainable for some, such as freshman Tyler Johnson and sophomore Maria Benton.

Johnson and Benton share a few similarities: Greek life was an import-

See **BID** | pg. 2

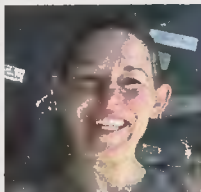
Relief with Responders

First responders relieve stress with unique Yoga class

Sarah Johnson
Event Coverage Coordinator | @sarahjohnson05

The free yoga for first responders class at Feel Better Burlington Yoga ends each session with a simple head bow and an exchange of "namaste"—an acknowledgment of the light in each and every person in the room.

Every Saturday from noon to 1 p.m., a unique group gathers in this hot yoga studio in downtown Burlington to sweat out



Olivia Kvitne
Founder

the stress of the week. Everyone in the room is, or is married to, a first responder.

The concept of yoga for first responders is not unique to Burlington. In 26 locations across North America, the organization Yoga for First Responders (YFFR) offers community classes and trainings.

Olivia Kvitne, a journalist and yoga instructor, created the program to bring yoga philosophy to practical applications for first responders around the country. The movement started with the Los Angeles Fire and Police Departments and has

See **YOGA** | pg. 6



NEWS • PAGE 4
Damages to Smith residence hall reaches \$100,000



ONLINE
elonnewsnetwork.com
Day in the life of an Elon cheerleader



SPORTS • PAGE 7
Basketball looks to veteran leadership ahead of CAA tournament