

ONE OF THE HIGHLIGHTS OF THE "OLD WILKES" TOUR
THE OLD WILKES JAIL

WCC Student Docents Needed For Tour Guides

Virgie Church

Opportunities are available now for college people to participate in the new Old Wilkes Jail activities in Wilkesboro. The Old Wilkes Jail is the first restoration of Old Wilkes, Inc. Student docents are needed in costume to serve as guides for walking tours. There also may be an opportunity for a college student to be resident manager of the Old Jail as the trustees of Old Wilkes Jail will be employing a resident manager either part time or full time.

Docent classes will be every Monday at 10 a.m. for the winter quarter and in the afternoon for the spring quarter. A special room will be set aside for WCC to teach early weaving and early pottery making.

The first class for the tour guides was held December 9, at 10 a.m., at which time Dr. Henry Landon III gave the history of the old jail. The Rev. Frank McKenzie spoke at the second session. The teachers and the topics for sessions three through ten are as follows: Mr. James Gray, Old Salem, Inc.; Mrs. Annie Winkler, Walking Tour Stops; Mrs. Dorris Potter, Bi-Centennial Plans; Mr. Jay Anderson, Wilkes County History; Mrs. Martha Basenberg, Early Weaving; Mr. Ray Kennedy, Early Pottery; Old Salem Staff, Docent Techniques; Dr. Robert Mayer, Tour Preparations.

The Old Wilkes Jail will be a heritage center when it is furnished and there will be a walking tour available with stops at specific sites in the town of Wilkesboro. When the Old Jail was in use, the jailor and his family lived in two rooms in the upper quarters of the jail. These rooms will con-

tain furniture of the period 1790-1860.

Old Wilkes, Inc. is similar to Old Salem, Inc. One of the goals of the trustees of Old Wilkes, Inc. is to serve the community by preserving the heritage of the people of Wilkes through the saving and restoring of some of the historical old homes and buildings in the county. Wilkes Community College's participation and involvement in the Old Wilkes, Inc. activities is another example of their continuing interest in serving the community.

BUD MAYES

Although he is remaining very quiet and secretive about what may be the next production of the Drama Dept., and not even so much as a hint . . .

BUD MAYES KNOWS.

I have information from a highly authoritative and very confidential source (Bill Mofett) that the mysterious Mr. Mayes is going to do the full production of THE OLD TESTAMENT, every book including Proverbs and Genesis (with all the begets).

Tryout date will be posted.
ALL RIGHT!!!

Music At Wilkes

Music is alive and well at Wilkes Community College. A wide range of activities are being offered now and more are planned.

Since its establishment a year ago under the direction of Dr. Robert Mayer, the Wilkes Community College Symphony Orchestra has grown to near professional proportions and is performing high calibre standard orchestral repertoire.

The newest additions to the music program at Wilkes are the Feeder Orchestra and the Basic Music class. The Feeder Orchestra performs music of a less difficult level than the Wilkes Community College Orchestra and provides an excellent opportunity for musicians who are beginners or who have not played for some time to develop strong technical proficiency. The Feeder Orchestra also will provide a strong base of support for the regular Symphony.

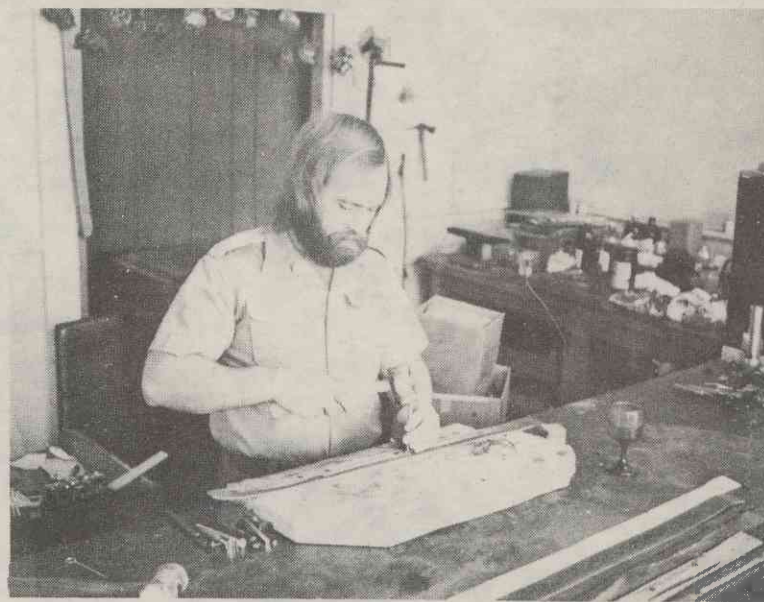
The Basic Music Class is available for those who have had no experience in reading musical notation and would like to increase their enjoyment and understanding of all kinds of music by learning how music is constructed and notated.

In addition to these two programs, the Wilkes Community College Chorus now meets two days per week and performs a wide variety of choral music from "pop to Bach."

Private and group instruction is being offered on all band and orchestral instruments by Jerry Bangle, Director of Music at Wilkes.

Also planned for this year is a string chamber orchestra and a jazz ensemble. A concert by the Appalachian State University Jazz Improvisation Ensemble and Faculty Woodwind Quintet is scheduled for January and February and a cello recital by Jerry Bangle is scheduled for early Spring.

If you want to participate in some exciting musical adventures, whatever your musical taste, come make your kind of music at Wilkes Community College.



PHILLIP SMITH

THE LEATHERSMITH

The Leathersmith on Main Street in Wilkesboro has brought a new trend in clothing to Wilkes County. The owner and proprietor, Phillip Smith, (a former student at WCC), is an aspiring young business man trying to make a go of it in this financially unstable time. His leather accessories include pants, hats, belts, rings, and key chains. His specialty is belts. He has a wide variety of

assorted belt buckles, in which he takes pride. These include solid brass reproductions, zodiac signs, and artistic pewter buckles.

He has recently started doing wholesale work, and he is selling to numerous shops across North Carolina.

Everyone is cordially invited to stop in and browse.

Allen Woody

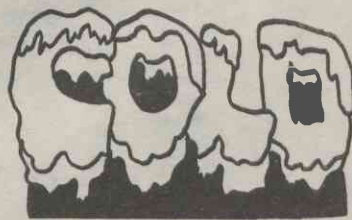
WINTER SAFETY

Vickie Reins

Here it is already . . . the first ice storm of the winter, and you never did get around to filling yourself a box of sand with which to de-skid your paths and driveway. Naturally you don't want anyone breaking his neck on the back steps, but you know that the same rock salt that does such a fine job on the slippery places now will still be lying in wait in the ground next spring when you want to plant morning glories by the porch.

Well, who needs rock salt, anyway? There are other materials that won't melt the ice for you, but will provide excellent traction underfoot and be kind to your soil too. Wood ashes, for instance. Or fine

coal. Or plain old garden earth, if it isn't already frozen too hard to dig up. Or — if you are reduced to using a store-bought product, try the substance you use in cat's litter box. It has the advantage of not tracking into the house as much as some of the other non-skid substances, and you'll find that most of it will still be lying around on the walk after the ice is gone (where you can sweep it up and save it for the next storm).



While you are sprinkling your footpaths, you'll want to fill a container of whatever material you use and put it in the back of your car or truck along with the extra snow shovel. Then, when your wheels spin on ice, you can provide enough purchase to get going . . . and, since you are not using salt, you won't have corroded auto bodies or yellowed roadside flowers on your conscience.

Dismayed by the size of the Newfoundland dog given to him for his birthday, the small boy wanted to know, "is he for me, or am I for him?"

Mitchell Community Downs Cougars

It was in all honesty a poor shooting night for the Cougars as they met Mitchell Community College in Statesville Saturday, Dec. 7th.

With the exception of forward Mike Richardson's 24 points and center Albert (Jo) Horton's 15, no other Cougars managed to get in double fig-

ures. Freshman forward Bill Hunt who had been averaging better than 17 points only connected for 6 points from the floor and hit only 2 from the foul line.

One of the keys to the Mitchell Mavericks win was the combination of Funderburk and Samuels which allotted for 29 of the Mavericks 90 point outpouring. Funderburk was hitting from the top of the key and driving in for the layup whenever possible, and when it wasn't he went to Samuels underneath.

Tony Parsons, a Wilkes County youth who has seen some limited action this season never played high school basketball, but during the second half he hit for four consecutive field goals while playing very good defense. Parsons who rotated at the forward position had a total of 10 points for the night.

BOX SCORE — WCC

	fg	fta	ftm	tp
Richardson	11	7	3	24
Horton	15	7	2	15
Hunt	2	7	2	6
Anderson	2			4
Byers	2	2	2	6
Bumgarner	2			4
Zachary	3	1		6
Parsons	5			10

Caldwell
Anthony
Absher
Elliott
Goodman

TOTAL 75

BOX SCORE — MCC

	fg	fta	ftm	tp
Wilson				
Funderburk	3	7	6	12
Samuels	8	4	1	17
Elledge	4	4	2	10
Grey	10	2		20
Daniels	2			4
Lindsey	1			2
Stevenson	7	3	2	16
McClte	3	3		3
Hillard	4	4		6
Lippard				

TOTAL 90

