



The Cougar Cry

THE VOICE OF WILKES COMMUNITY COLLEGE



VOLUME 4, No. 17

WILKESBORO, NORTH CAROLINA

JANUARY 23, 1975



1975-75 WHO'S WHO IN AMERICAN JUNIOR COLLEGES

WHO'S WHO

By Pete Mann

Selection for inclusion in Who's Who In American Junior Colleges represents high achievement in several areas. Students who receive this honor must excel academically as well as demonstrate outstanding leadership qualities.

The Who's Who Committee screened many nominations submitted by faculty members. Although all nominations were worthy of serious consideration, those selected for inclusion in Who's Who represent the best Wilkes Community College has to offer. We are, indeed, proud to announce the names of the following students and wish to extend sincere congratulations to them on

behalf of the students, faculty, staff, and administration of WCC.

Congratulations!

Who's Who 1974-75

Adams, Virgil Eugene
Anderson, Ricky Dean
Baker, Mary Aletha
Bullis, Vickie Lynn
Canter, John Robert
Cashion, John Fred
Cleary, Deborah Lynn
Eller, Debra Joyce
Galliher, Larry Dean
Manolovich, Joseph John
Moretz, Patsy Ann
Mullis, James Russell
Sexton, Thomas Edison
Shaffner, Linda Loretta
Speer, Patricia Wade
Wilborn, Johnny Frank
Wilson, Tony Eugene

Memorial Scholarship Fund Set Up For Charter Member

Mrs. Margaret Sue Rhodes Lovette of North Wilkesboro, who was a charter member of the Board of Trustees of Wilkes Community College, died Sunday night, January 5.

Mrs. Lovette, the daughter of Archie D. and Lena Little Rhodes, was born April 22, 1925.

She served on the board of directors and was secretary-treasurer of Holly Farms Poultry Industries, Inc. until she retired in 1972.

Mrs. Lovette was a member of Wilkesboro Baptist Church.

An alumna of Appalachian State University, she was a charter member of the President's Committee and a continuous member of the ASU Foundation.

Dr. Howard Thompson says, "The trustees and the administration of Wilkes Community College will definitely miss the presence of Mrs. Lovette on the board. She was appointed in 1964 before there was a college or a president. Mrs. Lovette was instrumental in the choice of site of this institution and had worked diligently for the college since the date of her appointment."

A Memorial Scholarship Fund has been set up for Mrs. Margaret Lovette at Wilkes Community College.

Last Minute News Flash

NOMINEES

Nominations were closed for Homecoming Court just as the newspaper was going to press. Here they are:

Vickie Bullis, Betty Rainey, Diana Pinnix, Becky Eller, Sharon Rhodes, Joyce Byers, Debra Eller, Shirley Faw, Pam Johnson, Debbie Cleary, Diane Whittington, Marlene Settle, Shelby Harris, Linda Shaffner, Jennie Caraway, Linda Phillips, Debbie Elliott, Patricia Cockerham, Kim Whitesides, Teresa Childress, Donna Mathis, Georgia Brown, Judy Newman, Debbie Osborne, Corrine Richardson.



MRS. MARGARET LOVETTE

It's A-Mayes-ing

Ten hapless persons trapped in an elevator inside a fifty-story building sounds like one of the run-of-the-mill suspense dramas of today's boring television.

But Bud Mayes has taken "The Lost Elevator," a one-act play written by Percival Wilde in the early 1930's and transformed it into a hilarious heartwarming story adapted for children.

The play will be presented by the Wilkes Community College Drama Department at the elementary schools of Wilkes County. In order to better serve the younger generation of the county, the show will be presented during school hours.

The following make up the cast:

An engaged man, John McCann; A small man in a hurry, Jon Dancy; A big easygoing man, Virgil Adams; A book salesman, Chuck Bowers; A messenger girl, Kim Whitesides; The elevator operator, Mike Elledge; An engaged young woman, Terrie Callihan; A nice old lady, Karen Wheeling; A romantic old maid, Margaret Montgomery; A housewife, Terri Adams; A girl with a dentist appointment, Kim Whitesides. **John McCann**



SAMPLE OF WORKS BY BOBBY FOSTER

HE LIKES BAD GUYS

Bobby Foster, a hard working art student, has produced many fine pieces of sculpture. The media Bobby uses most often are clay and stone. He does not use live models or photographs in his work to express his ideas. He says, "The ideas just come out of my head."

The figures, which are about ten inches high, would probably be called realistic, but they are not photographic. They are left somewhat rough textured

and sketchy, adding even more character to the already strong personalities of his "mountain folk." His works are as yet untitled. He simply calls them drunks, bad guys, and sheriffs.

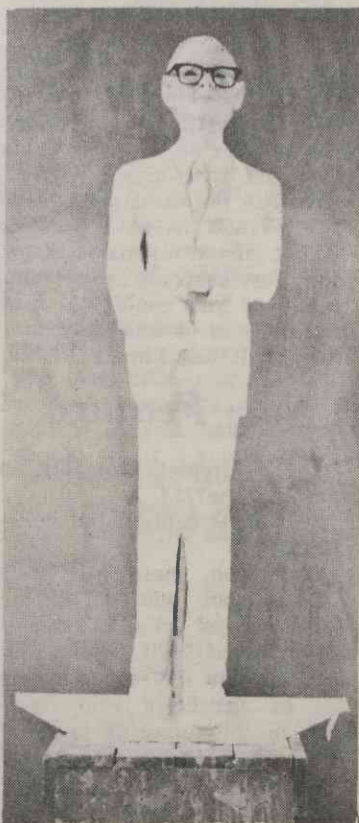
Sculpture, like music and all other art, is a form of expression and communication. Bobby's sculpture expresses sensitive feeling, a vivid imagination, and communicates in everyday language. It can be seen in the Commons Art Exhibit, February 3. Bobby's works must be viewed individually, for each figure has its own story to tell.

Statue Of Dr. Thompson

Virgie Church

Some very talented artists have modeled from the clay of WCC a two-thirds life-size statue of Dr. Howard Thompson. Having a hand in the sculpting were Dr. Robert Mayer and his sculpture class students: Diane Call, Brad Davis, Bobby Foster, Hight Helms, Grace Russell, and Ralph Williams. The statue is so large it had to be fired in sections.

Now the parts are all fitted together, and the finishing touches are being made. The statue will be exhibited along with some other students' art work through the Orchestral Concert at the Commons Art Exhibit February 2, through 10.



HOWARD BE THY NAME

Special Thanks To WWWC

By John Cashion

WWWC RADIO, with its neverending search for ways to sustain its already unselfish community service image has done it again. Under the good management of WWWC RADIO and with the help of our own John McCann, arrangements have been made to broadcast the remainder of the COUGAR home basketball games. We thank them for their part in helping make this the Wonderful World of Wilkes County.

Jazz Concert At Wilkes

On January 29 at 10:00 a.m. in the Teaching Auditorium, there will be a concert featuring the Appalachian State University Concert Jazz Band under the direction of Mr. Scott Meister.

The ASU Concert Jazz Band is a large ensemble of some 25 musicians. Their program will include a number of arrangements of contemporary rock songs as well as traditional jazz standards.

It promises to be a very enjoyable program and all students and staff are invited to attend.